



Advanced Call Router™

Manual

05/2004 0000-0001-5.0

WARNING!

Toll fraud is committed when individuals unlawfully gain access to customer telecommunication systems. This is a criminal offense. Currently, we do not know of any telecommunications system that is immune to this type of criminal activity. AltiGen Communications, Inc. will not accept liability for any damages, including long distance charges, which result from unauthorized and/or unlawful use. Although AltiGen Communications, Inc. has designed security features into its products, it is your sole responsibility to use the security features and to establish security practices within your company, including training, security awareness, and call auditing.

NOTICE

While every effort has been made to ensure accuracy, AltiGen Communications, Inc. will not be liable for technical or editorial errors or omissions contained within the documentation. The information contained in this documentation is subject to change without notice.

This documentation may be used only in accordance with the terms of the AltiGen Communications, Inc. License Agreement.

AltiGen Communications, Inc.
4555 Cushing Blvd.
Fremont, CA 94538
Telephone: 510-252-9712
Fax: 510-252-9738
E-mail: info@altigen.com
Web site: www.altigen.com

TRADEMARKS

AltiGen, AltiServ, AltiWare, AltiContact Manager, AltiReach, AltiLink, AltiConsole, AltiAdmin, ACM Admin, AltiVRPlayer, Zoomerang, and Dynamic Messaging are trademarks or registered trademarks of AltiGen Communications, Inc.

All other brand names mentioned are trademarks or registered trademarks of their respective manufacturers.

Copyright © AltiGen Communications, Inc. 2004. All rights reserved.
05/2004 0000-0001-5.0

Contents

New in Version 5.0	1
Installation	1
Database Upgrade	2
Call Router DBUpdate Tool	2
To Configure/Run Advanced Call Router:	3
Advanced Call Router Route Rules	5
Creating Route Rules	6
Viewing Advanced Call Router History Menu	9
Show Workgroup Status	11
Clearing Advanced Call Router History Data	12
Additional Advanced Call Router Features	13
Testing Call Router	19
Testing SQL Server Database	22

Advanced Call Router

Advanced Call Router is the standard Call Router application plus call router service. Advanced Call Router requires the purchase and activation of a Advanced Call Router license.

Note: The workgroup to which incoming trunk calls will be routed via Call Router must be assigned to the Auto Attendant whose Action is set to “Avd - Data Directed Routing, with **Application** set to the virtual extension you use to start Call Router. For further information on configuring Auto Attendants, refer to the Auto Attendant Configuration chapter of the AltiWare System Administration Manual and the *AltiAPI Programmer Guide*.

New in Version 5.0

- **Setting Call Priority** - when a call data element matches one of the business rules configured in Advanced Call Router’s database, the priority of this call can be set to a pre-defined value configured in the matched business rule.
- **Extension password protection for logins** - AltiServ maintains a counter for each extension to track login failures. Up to 8 login attempts are allowed, after which login will be disabled from 1 to 24 hours (depending on the Administrator’s setting).

Installation

To install Advanced Call Router, run the .exe file from the Advanced Call Router folder of the AltiWare 5.0 Installation CD. When prompted, enter the 20 digit license key for Advanced Call Router in the field and click **Next**. Setup will confirm the destination for the Call Router application (default is C:\Program Files\AltiGen\Call Router). Click **Next** to proceed. To select a different location, use the **Browse** button to choose the new destination.

Note: **Advanced Call Router** Service requires the purchase and activation of the Advance Call Router license.

Database Upgrade

If a user has Basic Call Router installed to a machine without AltiServ, the user will not be able to upgrade the Basic Call Router's database to the Advanced Call Router's database.

If a user has Basic Call Router already installed to a machine running AltiServ, then Basic Call Router's database will be upgraded automatically if the Advanced Call Router is installed on the machine.

If the user wants to re-use routing rule information from Basic Call Router, the user should perform a fresh install of Advanced Call Router to the machine running AltiServ. From there, the user can use the **CRDBUpdate** tool to update the Basic Call Router's database to the Advanced Call Router's database.

After upgrading all the old rules from the Basic Call Router's database, they can then be re-used by Advanced Call Router.

Call Router DBUpdate Tool

Important: Before using the CRDBUpdate tool to update Basic Call Router's database to Advanced Call Router's 5.0 database, please stop Advanced Call Router service and/or Basic Call Router.

To run the Call Router DB update tool:

1. Open CRDBUpdate.exe.
2. Browse and/or select the 4.6 Basic Call Router's database at "Source database," (default name - "callrouter.mdb.")
3. Browse and/or select the 5.0 Advanced Call Router's database as the "Destination database," (default name -"callrouter.mdb.")

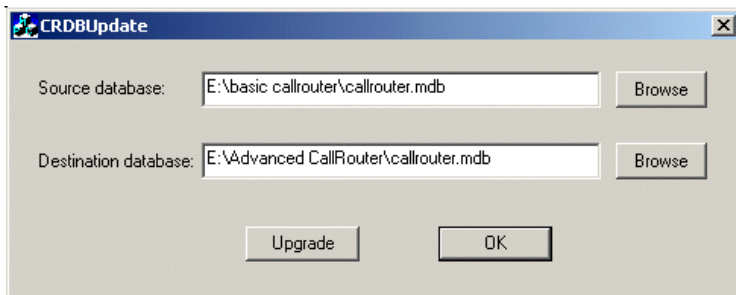


Figure 1. Call Router DBUpdate tool

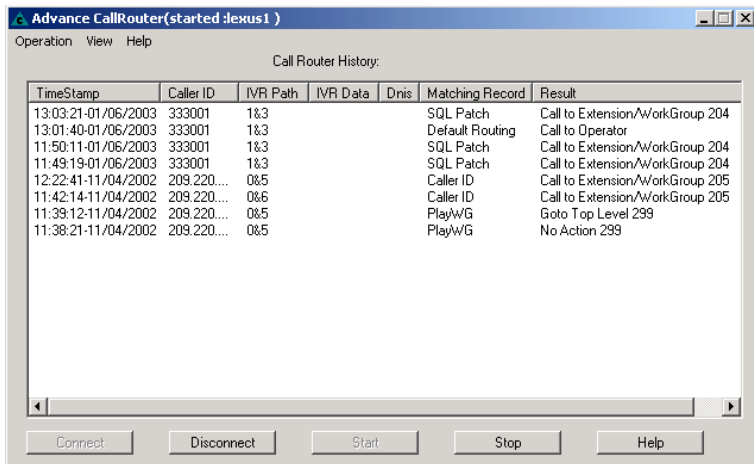
4. After selecting the two databases, press the **Upgrade** button to upgrade the 4.6 Basic Call Router's database to the 5.0 Advanced Call Router's database.
5. After updating the database, restart the Advanced Call Router's service for the changes to take effect.
6. If the Basic Call Router and Advanced Call Router are installed on different machine, the user can simply share the Basic Call Router database file for conversion or copy the callrouter.mdb file to the machine running Advanced Call Router for conversion.

Notes:

- The tool will copy the source database to overwrite destination database. If the user wants to keep destination database information, please backup destination database before upgrade.
- If Basic Callrouter and Altiserv are installed on the same machine, the installation of Advanced Call Router will automatically upgrade the Basic Call Router database. So after installing Advanced Call Router, the user does not need to manually run this tool.

To Configure/Run Advanced Call Router:

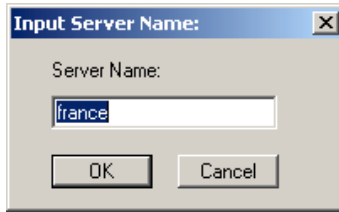
1. Launch Call Router from Start>Programs.



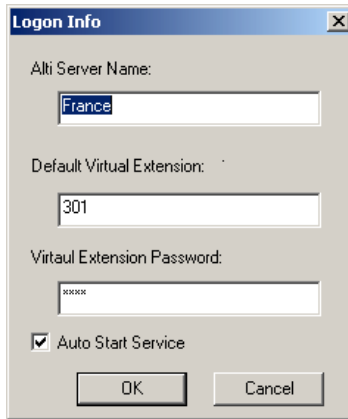
2. Click the **Connect** button to enter the Call Router Server Name or IP address to connect to, then click **OK**.

To Configure/Run Advanced Call Router:

To disconnect from this server, click the **Disconnect** button.



3. Select **Operation>Logon Info**.



4. In the **Logon Info** window, enter the **Server Name** and **Default Virtual Extension** and **Password**, that Advanced Call Router will connect to, then click **OK**.

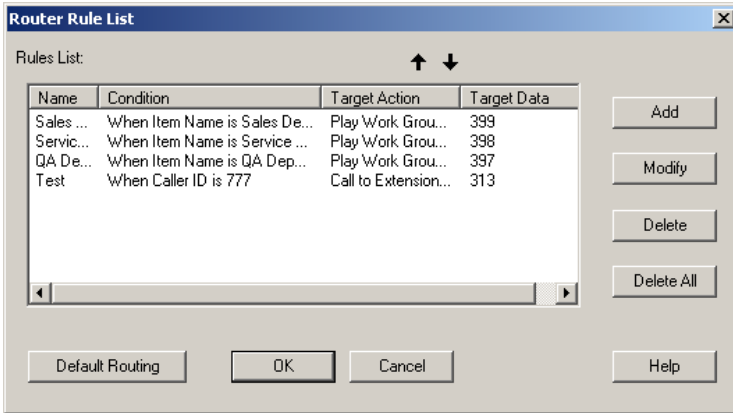
(Optional) Check **Auto Start Service** to have Advanced Call Router start routing calls automatically, after the system restarts or after Advanced Call Router service has been stopped and restarted.

Note: AltiServ maintains a counter for each extension to track login failures. Up to 8 login attempts are allowed, after which login will be disabled from 1 to 24 hours (depending on the Administrator's setting).

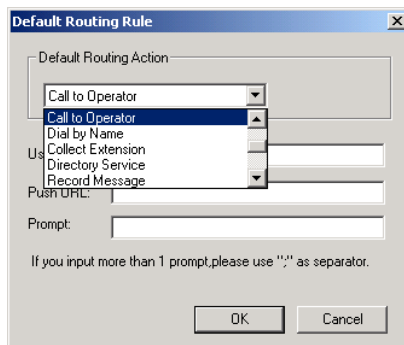
5. Click **Start** to run Advanced Call Router. When Advanced Call Router is stopped, you can configure the server and login information.
6. Route Rules and Show Monitor can be configured while Advanced Call Router is started.

Advanced Call Router Route Rules

To create route rules that will be used to route calls, select **Operation>Route Rule** to open the **Route Rule List** window. This window also allows you to view existing route rules, and modify/delete route rules.



- **Add** - opens a Custom Record dialog box, where you can create a new record and build the conditions for the record.
- **Modify** - opens the Customer Record dialog box to modify the record selected in the Record List.
- **Delete** - deletes the record selected in the Record List.
- **Delete All** - deletes all records in the Record List.
- The **Default Routing** button opens a **Default Routing Rule** dialog box, where you can specify the action for Call Router to take if no match is found in the rules or in the database.



Default Routing Action options: No Action, Goto Top Level, Goto Menu Item, Repeat Current Level, Call to Extension/Workgroup, Call to Operator, Dial by Name, Collect Extension, Directory Service, Record Message (specify target data in accompanying text box), Mailbox Access, Disconnect, System Callback, Collect Digits (specify fields in accompanying Collect Digit dialog box), Other DDR Application (specify target data in accompanying text box), Play WG Queue Status (specify target data in accompanying text box).

Creating Route Rules

To create a route rule:

1. Select **Route Rule** from the **Operation** menu.
2. Click the **Add** button to open a new Route Rule or **Modify** to modify an existing rule in the **Rules List** window.

Rule

Rule Name: Queue Announcement Sales

1. Build the Conditions for your rule:

If Caller Info contains: Match one of these items

Item	Data	DSN
<input checked="" type="checkbox"/> Caller ID	5102521001	
<input type="checkbox"/> IVR Path		
<input type="checkbox"/> IVR Data		
<input checked="" type="checkbox"/> ItemName	Queue Sales	
<input type="checkbox"/> Dnis		

2. Target action of the Rule:

Set Call Priority: Set Call Priority Call Priority: 103

Set Call Priority: 5

User Data:

Push URL:

Prompt:

If you input more than 1 prompt, please use ":" as separator.

OK Cancel Help

3. Enter or modify the **Rule Name** in this field.
4. Select the data to match against routing rules.
 - **If Callee Info contains** - lets you select Call Route Request data to match against the customer record.
 - a) Select “**Match one**” or “**Match all**” from the dropdown list.
 - b) Select the items you want.
 - c) Click in the **Data** column and type to specify the data.

To manually specify data for an item, right-click the item, select **Input data** and enter information in the column.

Notes:

- Caller Entered Digits must be numeric only.
- You can enter “*” as a wildcard character for any length of digits, or “?” for a single digit.

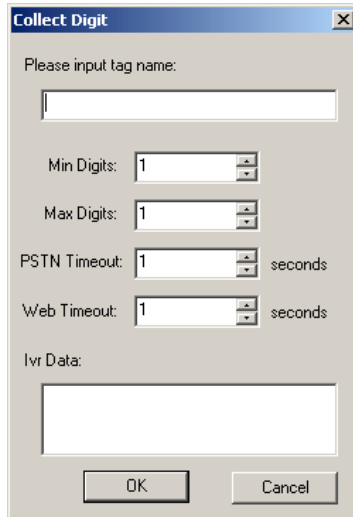
For example, if you specify Call ID Data “510252*,” this will match all Caller IDs 510-252-xxxx. If you specify Call ID Data “510252????,” this will match all Caller IDs 510 252-xxxx.

To specify data from an existing database, right-click the item, select **From user database**, and enter information in the **DataSource** dialog box.

5. Select a **Target action** for Call Router to perform when Call Route Request data matches this record.

Target action options: No Action, Goto Top Level, Goto Menu Item, Repeat Current Level, Call to Extension/Workgroup, Call to Operator, Dial by Name, Collect Extension, Directory Service, Record Message (specify target data in accompanying text box), Mailbox Access, Disconnect, System Callback, Set Call Priority (set extension that has call priority and specify the call priority level), Collect Digits (specify fields in accompanying Collect Digit dialog box, **see Note below**), Other DDR Application (specify target data in accompanying text box), Play WG Queue Status (specify target data in accompanying text box, **see Note below**).

Note: Collect Digit Dialog Box



- **Tag name** - for example, “password” (gathered from a response to an Auto Attendant prompt or another AltLink Plus application)
- **Minimum Digits** and **Maximum Digits** to collect
- **PSTN** and **Web Timeout** values
- **IVR Data** - for example, “username=Michael” (gathered from a response to an Auto Attendant prompt or another AltLink Plus application)

Note: Play WG Queue Status - if you select “Play WG Queue Status,” Advanced Call Router must log on as a workgroup extension with password and Call Router’s virtual extension and password. Specify this workgroup extension in the textbox that appears when you select **Play WG Queue Status**. (See “Queue Announcements” on page 14.)

If you want to apply the “**Play WG Queue Status**” Target action to several different workgroups, you must create separate rules for each.

6. (*future release*) Enter optional data to match against the routing rule:
 - User Data (gathered from a response to an Auto Attendant prompt or another AltLink Plus application)

- Push URL (AltiWeb only)
- the number of prompt to play to the callee

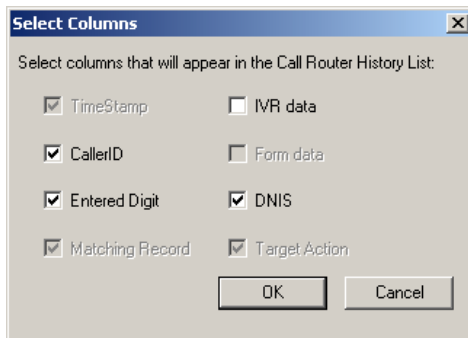
7. Click **OK**.

Viewing Advanced Call Router History Menu

The Advanced Call Router window gives a history of all incoming trunk calls to Advanced Call Router.

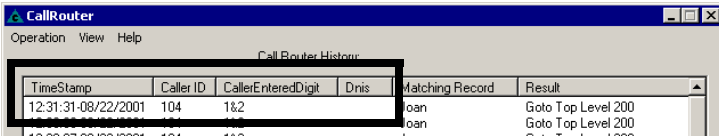
To specify Call Router History window content:

1. Choose **Select Column** from the **View Menu**.
2. In the **Select Columns** dialog box, select the columns to display in the Call Router history window the following:
 - Caller ID
 - Entered Digit
 - IVR data
 - DNIS



Call Route Request Data

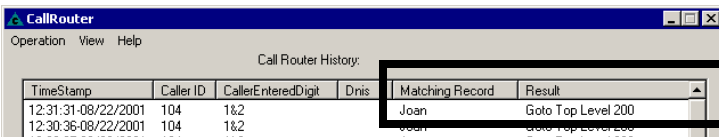
The “Call Router Request” message sent by AltiServ to Call Router contains data about the incoming call, which Call Router attempts to match against your routing rules. Call Route Request data consists of Caller ID, (Caller) Entered Digits, IVR data and DNIS, all collected via real-time monitoring.



Note: Caller Entered Digits shows the Auto Attendant assignment for the workgroup that receives the call. If the workgroup’s AA assignment is 5, this item shows “0 & 5”; is the AA assignment is 3, the item shows “0 & 3,” and so on. The “0” indicates transfer to an Auto Attendant.

Call Route Response Data

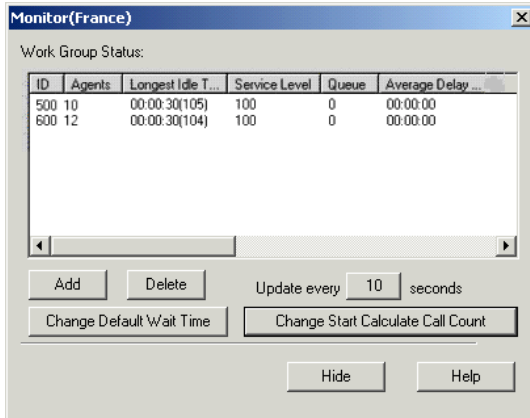
The “Call Route Response” message, sent from Call Router to AltiServ, contains the search results of the Call Route Request Message. In the Call Router History window, this data shows how Call Router handled each call. Call Route Response data includes Matching Record (routing rule Call Router referred to for call routing) and Result (how and where the call was routed), all collected via real-time monitoring.



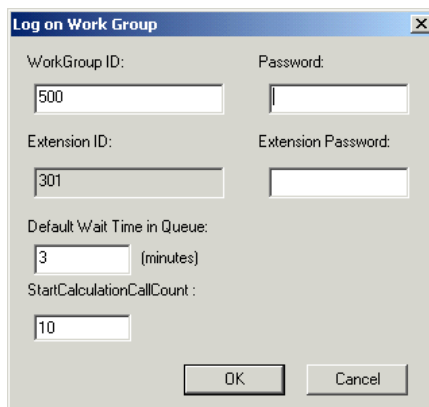
Note: If no match is found between the Call Route Request Data and the routing rules, the call is routed according to the business rules that check monitored workgroups for the longest available agent, maximum service level, and minimum expected delay.

Show Workgroup Status

To view real-time data on incoming trunks to workgroup, select **Show Workgroup Status** from the **View** menu.



- The main window box displays the following workgroup fields: **ID**, **Agents**, **Longest Idle Time**, **Service Level**, **Queue**, **Average Delay** and **Default Wait Time**.
- **Add** button - Click **Add** to log on to a workgroup whose incoming trunk call data you want to monitor. This opens a Log on Work Group dialog box.



Enter the workgroup extension as the **WorkGroup ID** and **password**, and enter the virtual extension's **password**. In the field for **Default**

Wait Time in Queue, type in the desired minutes. (By default, the **Extension ID** field is grayed out.)

- **Delete** button - click **Delete** to remove the selected workgroup from the display.
- **Change Default Wait Time** - click this button to change the default wait time associated with the workgroup queue.

Note: The workgroup to which incoming trunk calls will be routed via Call Router must be assigned to the Auto Attendant whose **Action** is set to “Avd - Data Directed Routing,” with **Application** set to the virtual extension you use to start Call Router. For further information on configuring Auto Attendants, refer to the Auto Attendant Configuration chapter of the AltiWare System Administration Manual and the *AltiAPI Programmer Guide*.

If you want to announce queue status to callers (**Target action** of any routing rule is “Play WG Queue Status,”) complete the **Virtual Extension ID** and **Virtual Extension** password fields using the workgroup agent extension (and its password) specified in the rule.

To log on to multiple workgroups:

- Click **Add** again and enter the next Workgroup ID and Password.
- **Change Start Calculate Call Count** - click this button to change the starting point for the number of calls to be reached for Call Router to start calculating call data.

Clearing Advanced Call Router History Data

To clear data from the Advanced Call Router History window:

1. Go to the directory “Program Files/AltiGen/Call Router” where Call Router.exe resides, locate the Call Router.csv file.
2. Open Call Router.csv and delete all contents.
3. Save and close Call Router.csv.

Additional Advanced Call Router Features

Building SQL Queries

To build an SQL query that Call Router will send to your database, use the **CallerId Datasource** dialog box. The customer information retrieved from your database will be used in the routing rule.

CallerId DataSource

DSN: User Name: Password:

Condition:

Caller ID	Field Type	Field Name	Table Name
Caller ID	char		

Where:

Data Retrieve from User Database
Input the field name and field type, server will get the field value from database

Field Name	Field Type	Table

SQL Query Sentence:

Note: In run time, the @CallerID will replace with digits we get from Caller.

OK Cancel

To open the Datasource dialog box, right-click on a data **Item** you want to specify using information from an existing database. Select **From user database**:

To build an SQL query:

1. Enter User Name and Password information for the database.
2. Enter information for the database you are querying against. For example:

DSN - BankAccount

Table Name - AccountBalance

Matched Field Name - CustomerPhoneNumber

Matched Field Data Type - char

Note: as you build the query, the **SQL query sentence** will appear in the window at the bottom.

3. Specify the condition for this query.
 - a. Select the **Caller Match Item** data for this query - **Caller ID, CallerEnteredDigits, Dnis, Item name** or **IVR data**.
 - b. Add any additional condition. For example Where - && Balance>1000
4. Click **OK**. You will be returned to the **Rule** dialog box, where the SQL query will be shown in the **Data** column and the database will be shown in the **DSN** column.

Queue Announcements

You can use Advanced Call Router to inform callers of their position in a workgroup queue. There are two requirements:

1. In Call Router, you must create a rule with Target action “Play WG Queue Status.” In addition, enter an Item Name that matches the name of the Auto Attendant’s “Data Directed Routing” name. The workgroup extension information you specify in the rule must also be entered when Call Router logs on in the Monitor window. Thus, it is a **requirement** to use the same virtual agent extension if you are writing several different queue announcement rules.
2. In AltiAdmin, you must configure one of the Auto Attendant numbers to which Call Router is assigned to “Data Directed Routing.” 1) Enter the same “Item Name” you use in the rule discussed immediately above. 2) Replace the “No Action” level with “Call – to Ext./ Workgroup,” and enter the workgroup extension number. For further information on configuring Auto Attendants, see the *AltiWare OE System Installation and Administration Manual* and the *AltiAPI Programmer Guide*.

If your organization has multiple workgroups and you want queue announcement for several or all of them, you must create separate rules for each, with workgroup extension information pertinent to each workgroup.

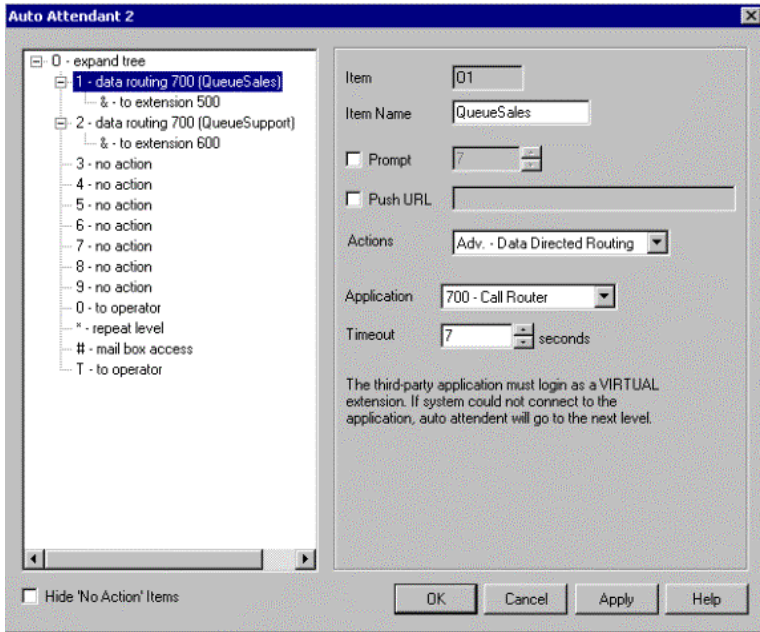
Example:

You use virtual extension 700 to log in to Call Router. You have two workgroups, Sales and Support, with the following agent and workgroup extensions:

	Sales	Support
Workgroup extension number	500	600
Call Router virtual extension number	700	700

For both workgroups, you want Call Router to check incoming calls for Caller ID and Caller Entered Digits, and to play the WG queue status if a match is found and all agents are busy.

In AltAdmin, you configure the Auto Attendant to which Call Router is assigned as shown below. (The example uses Auto Attendant 2.) Note that you must enter a different Item Name for each level.



Clearing Advanced Call Router History Data

For Sales, you create a rule as shown below.

Rule

Rule Name: Queue Announcement Sales

1. Build the Conditions for your rule:

If Caller Info contains: Match one of these items

Item	Data	DSN
<input checked="" type="checkbox"/> Caller ID	5102521001	
<input type="checkbox"/> IVR Path		
<input type="checkbox"/> IVR Data		
<input checked="" type="checkbox"/> ItemName	Queue Sales	
<input type="checkbox"/> Dnis		

2. Target action of the Rule:

Call to Extension/WorkGroup Ext No. : 500

User Data:

Push URL:

Prompt:

If you input more than 1 prompt, please use "," as separator.

OK Cancel Help

Similarly, for Support, you create a rule as shown below.

Rule [X]

Rule Name:

1. Build the Conditions for your rule:

If Caller Info contains:

Item	Data	DSN
<input type="checkbox"/> Caller ID		
<input type="checkbox"/> CallerEnteredDigit		
<input type="checkbox"/> IVR Data		
<input type="checkbox"/> Form Data		
<input checked="" type="checkbox"/> ItemName	QueueSupport	
<input type="checkbox"/> Dnis		

2. Target action of the Rule:

User Data:

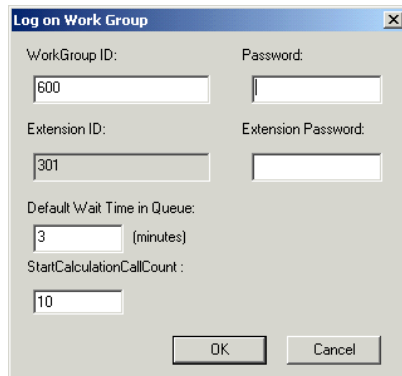
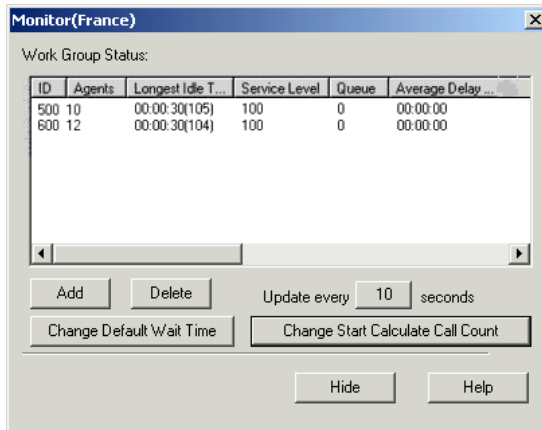
Push URL:

Prompt:

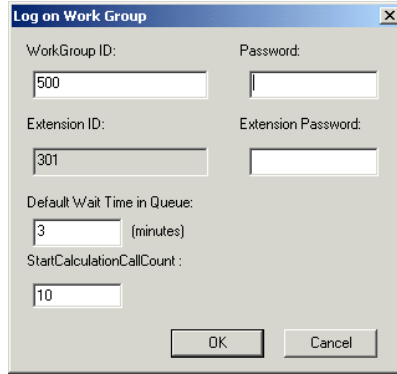
OK Cancel Help

Clearing Advanced Call Router History Data

In the Monitor window, click Add to log on to Sales, entering both the workgroup extension & password and the virtual extension & password you specified in the “Auto Attendant Sales Queue Announcement” rule:



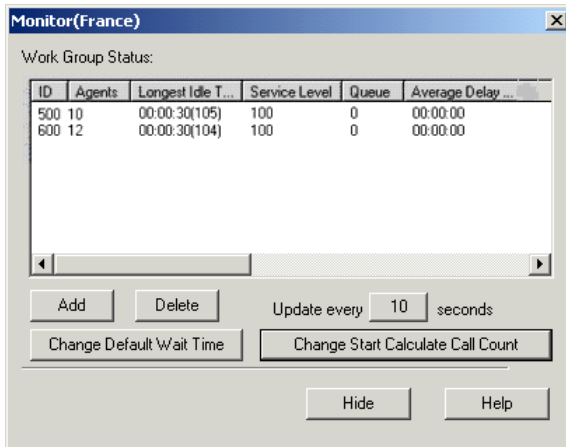
In the Monitor window, click Add to log on to Support, entering both the workgroup extension & password and the virtual extension & password you specified in the “Auto Attendant Sales Queue Announcement” rule:



The dialog box titled "Log on Work Group" contains the following fields and controls:

- WorkGroup ID:
- Password:
- Extension ID:
- Extension Password:
- Default Wait Time in Queue: (minutes)
- StartCalculationCallCount:
- Buttons: OK, Cancel

The Monitor window shows that Call Router is logged on to both workgroups. Calls to each workgroup will be checked against the rules and will trigger queue announcement if a match is found and all agents are busy.



The Monitor(France) window displays the following Work Group Status table:

ID	Agents	Longest Idle T...	Service Level	Queue	Average Delay ...
500	10	00:00:30(105)	100	0	00:00:00
600	12	00:00:30(104)	100	0	00:00:00

Below the table are the following controls:

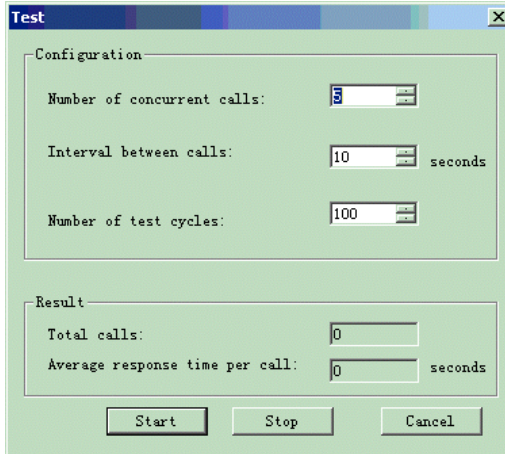
- Buttons: Add, Delete
- Update every: seconds
- Buttons: Change Default Wait Time, Change Start Calculate Call Count
- Buttons: Hide, Help

Testing Call Router

To test the performance of Call Router, you can access a test tool from the Call Router main menu. Call Router must be stopped in order to run the test.

To test Call Router:

1. With Call Router function stopped, go to **Test** in the Tool drop-down list of the Call Router main menu for the **Test** dialog box.



The image shows a dialog box titled "Test" with a close button (X) in the top right corner. The dialog is divided into two main sections: "Configuration" and "Result".

Configuration section:

- "Number of concurrent calls:" with a spin box set to 5.
- "Interval between calls:" with a spin box set to 10 and the unit "seconds" to its right.
- "Number of test cycles:" with a spin box set to 100.

Result section:

- "Total calls:" with a spin box set to 0.
- "Average response time per call:" with a spin box set to 0 and the unit "seconds" to its right.

At the bottom of the dialog, there are three buttons: "Start", "Stop", and "Cancel".

2. In the **Configuration** fields, the user can input the following test parameters:
 - **Number of concurrent calls**
 - **Interval between calls**
 - **Number of test cycles**

For example, inputting **5** for *concurrent calls*, **3** for *interval between calls*, and **4** for *test cycles* means that every 3 seconds, there will be 5 concurrent call requests to Call Router. Total cycles of concurrent requests will be 4 times.

3. After inputting the test parameters, click **Start**. During the test, the user can click **Stop** to stop the test. The title of the **Test** dialog box will be shown as "*Test(Started)*" while running.

Test(Started)

Configuration

Number of concurrent calls: 5

Interval between calls: 3 seconds

Number of test cycles: 4

Result

Total calls: 5

Average response time per call: 1.105 seconds

Start Stop Cancel

The total calls processed and average time per call will be updated in real-time during the test. The user will know how many calls were processed and the average response time per call at that time.

- After the test has finished, the title of the **Test** dialog box will be shown as “*Test(Stopped)*.”

Test(Stopped)

Configuration

Number of concurrent calls: 5

Interval between calls: 3 seconds

Number of test cycles: 4

Result

Total calls: 20

Average response time per call: 0.694 seconds

Start Stop Cancel

- The **Total calls** that Call Router processed and **Average response time per call** of this test will be shown in the **Result** fields.

Testing SQL Server Database

To test SQL server database access performance of Call Router:

1. Add a database for the SQL server.

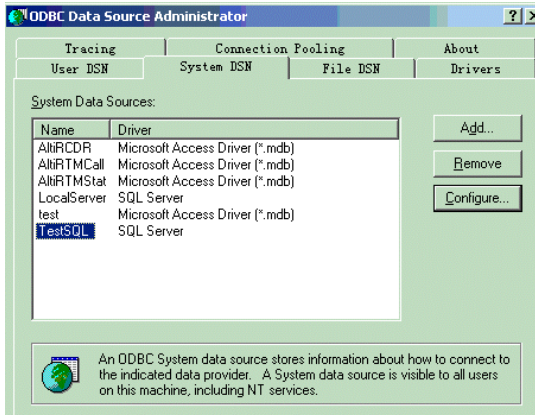
For example, for a database “calldb” and table name “RTMCALL”, 10,000 records are added to the table.

NodeID	SessionID	InternalCall	Direction	StartTime	EndTime	CallerType	CallerPad
1	1039470405	0	2	1039575519	1039575521	12	0223
1	1039470406	0	2	1039575527	1039575529	12	0223
1	1039470407	0	2	1039575535	1039575537	12	0223
1	1039470408	0	2	1039575543	1039575545	12	0223
1	1039470409	0	2	1039575551	1039575553	12	0223
1	1039470410	0	2	1039575559	1039575561	12	0223
1	1039470411	0	2	1039575567	1039575569	12	0223
1	1039470412	0	2	1039575575	1039575577	12	0223
1	1039470413	0	2	1039575583	1039575585	12	0223
1	1039470414	0	2	1039575591	1039575593	12	0223
1	1039470415	0	2	1039575599	1039575601	12	0223
1	1039470416	0	2	1039575607	1039575609	12	0223
1	1039470417	0	2	1039575615	1039575617	12	0223
1	1039470418	0	2	1039575623	1039575625	12	0223
1	1039470419	0	2	1039575631	1039575633	12	0223
1	1039470420	0	2	1039575639	1039575641	12	0223
1	1039470421	0	2	1039575647	1039575649	12	0223
1	1039470422	0	2	1039575655	1039575657	12	0223
1	1039470423	0	2	1039575663	1039575665	12	0223
1	1039470424	0	2	1039575671	1039575673	12	0223
1	1039470425	0	2	1039575679	1039575681	12	0223
1	1039470426	0	2	1039575687	1039575689	12	0223
1	1039470427	0	2	1039575695	1039575697	12	0223
1	1039470428	0	2	1039575703	1039575705	12	0223

Note: Because the data of DDR request has hard coded. If the user wants a rule match, the user needs to add the record to the table. The caller ID of test request will be “1039470405.” IVR Path of test request will be “0&9.”

To use the “SessionId” field in the table to match caller ID of the request, the user must add a record to the table and set the SessionId value to “1039470405”. Then during match process, the matched result will be true.

2. Add a data source to “ODBC” configuration in Windows.



The “TestSQL” is the newly added data source. This data source is connect to the SQL server’s “calldb” database.

3. In Call Router, add a rule to access database.

CallerId DataSource

DSN Name: User Name: Password:

Condition

Caller ID	Field Type	Field Name	Table Name
Caller ID	char	sessionid	rtncall

Where

Data Retrieve from User Database

Input the field name and field type, server will get the field value from database

Field Name	Field Type	Table
callerpad	char	rtncall

SQL Query Sentence:

```
Select rtncall.sessionid,rtncall.callerpad From rtncall
Where rtncall.sessionid = @CallerID
```

Note: In run time, the @CallerID will replace with digits we get from Caller.

OK Cancel

The user can change the rule configuration to fit his own conditions.

During the test, Call Router will use this rule to match the DDR request. When using this rule, Call Router will access the SQL server to execute the SQL query.

