

REFERENCE

2503-TYPE TELEPHONE SETS

IDENTIFICATION AND CONNECTIONS

1. GENERAL

1.01 This section contains information for the 2503C manufacture discontinued (MD) and 2503CM (modular) (Fig. 1) telephone sets. Refer to Section 502-500-110 for common maintenance information for 0- and 1-button telephone sets.

1.02 The reasons for reissuing this section are listed below. Revision arrows are used to emphasize the more significant changes.

- Add the 641E jack
- Add the D-180896 Kit of Parts (polarity guard)
- Show the 819040528 (P-90D052) guard assembly MD.

2. IDENTIFICATION

2.01 The 2503-type telephone sets are desk sets intended for use in conjunction with other equipment to provide DATAPHONE® data communications service.

2.02 *The 2503CM:* With the exclusion key nonoperated (normal position) this telephone set may be used with the J1D402B data set to provide data service with monitoring of computer-generated voice replies. With the exclusion key operated (up position) the set provides regular telephone service. To deactivate monitoring feature, refer to Fig. 3, Note 4. To use the telephone set to provide data set

control with the exclusion key operated, refer to Table A.

2.03 *The 2503C (MD):* With the exclusion key operated (up position) this telephone set may be used with the J1D402B data set to provide data service. With the exclusion key nonoperated (normal position) the set provides regular telephone service.

Note: The relationship of features to exclusion key differs in the 2503C (MD) and 2503CM telephone sets.

2.04 These telephone sets are used in Data Access Arrangements (DAA) where the customer-owned equipment is connected to the DDD network through a coupler. Figure 2 and 3 provide connection information on the 2503C (MD) and 2503CM telephone sets. The 2503CM is a modular set which is shipped with a G15A handset but without the H4DU handset cord or the D8AA mounting cord, **which must be ordered separately.**

2.05 For application of these telephone sets, refer to Division 590.

2.06 Table B lists replaceable components for these sets.

2.07 When a polarity guard is required with these sets, install the D-180896 Kit of Parts (guard assembly) or the 819040528 guard assembly (MD) as shown in Table C. Polarity guards should be installed only when authorized by local instructions to prevent battery and ground reversals encountered in end-to-end signaling installations.

NOTICE

Not for use or disclosure outside the
Bell System except under written agreement

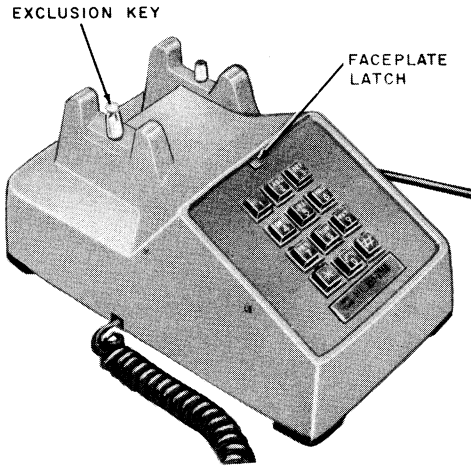
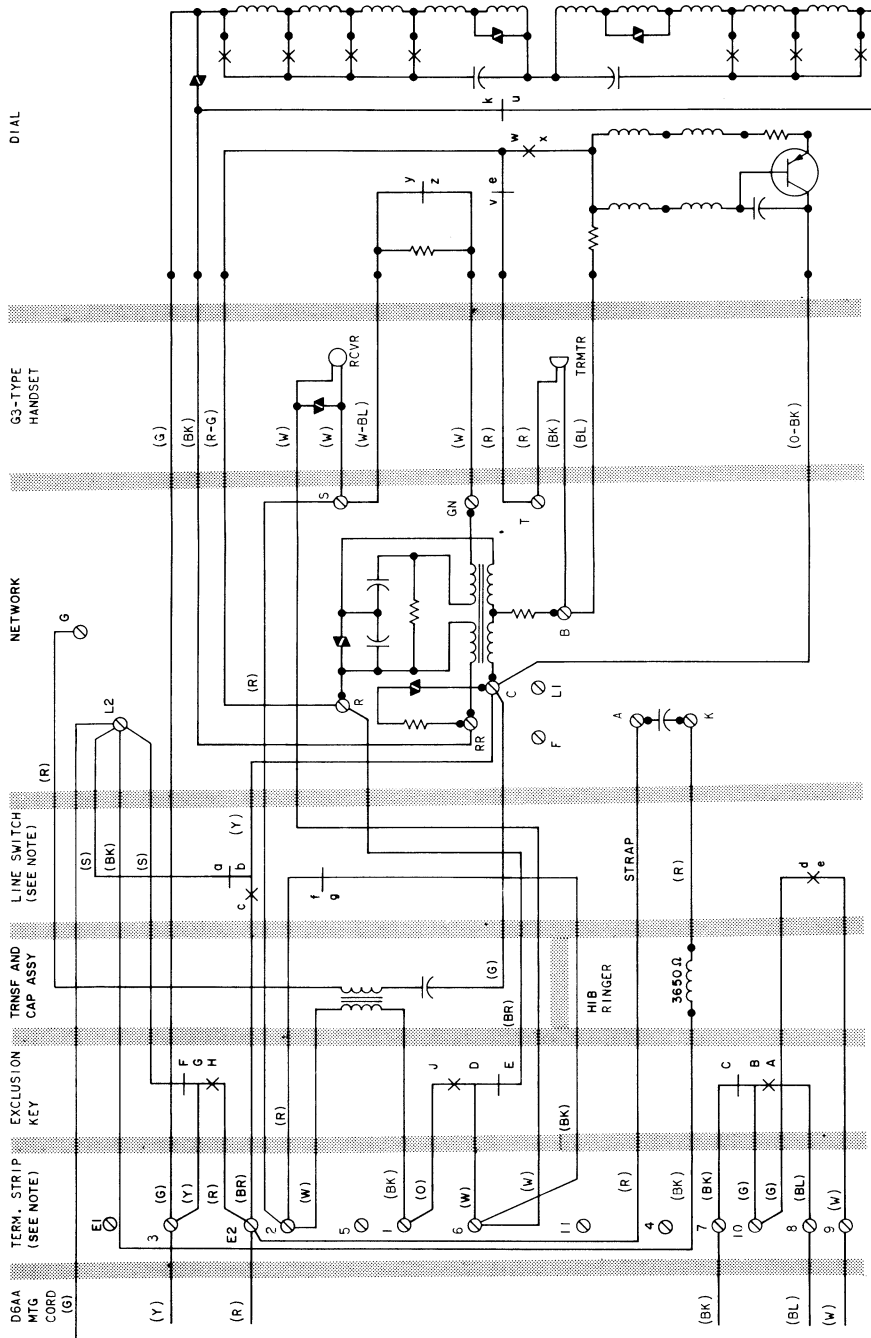


Fig. 1—2503CM Telephone Set

♦TABLE A♦

TO PROVIDE DATA SET CONTROL WITH
EXCLUSION KEY OPERATED (2503CM ONLY)

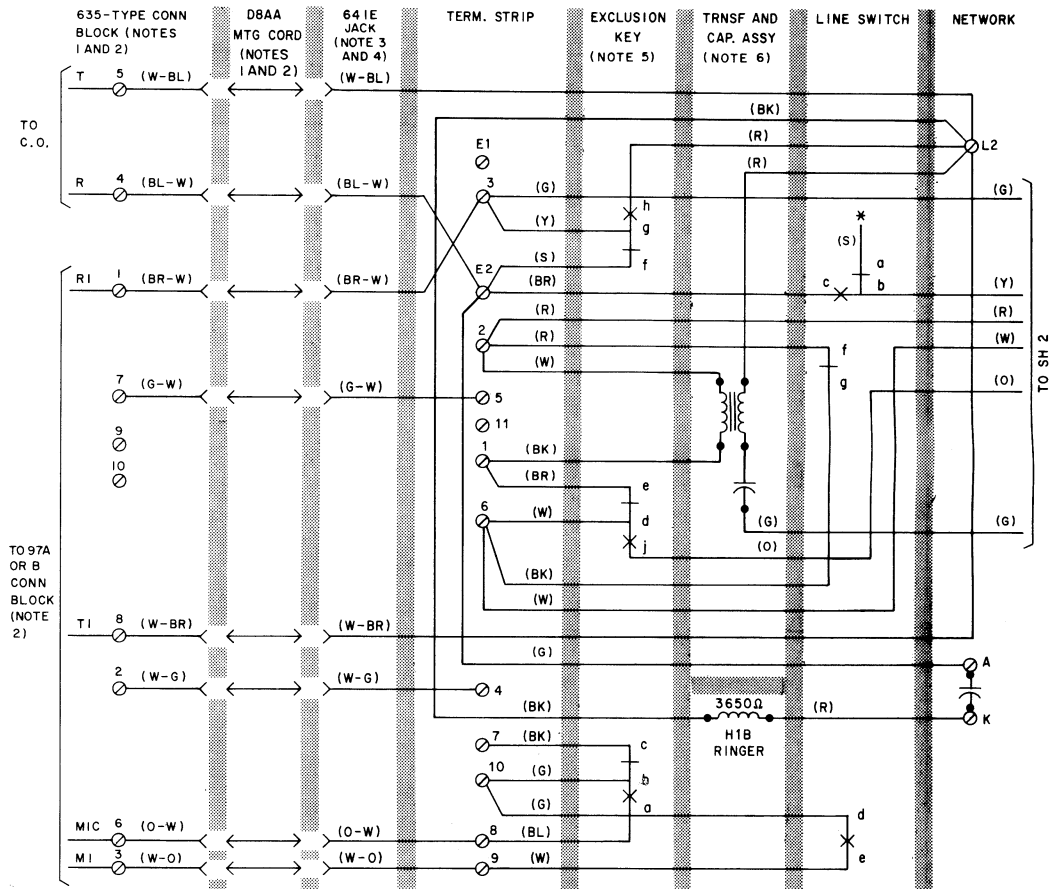
LEAD	COLOR	REMOVE FROM		CONNECT TO	
		TERM. STRIP	NET.	TERM. STRIP	NET.
Exclusion Key	S	E2			L2
	R		L2	E2	
	BR	1			R
	O		R	1	
641E or 641D (MD) Jack	O-W	8		7	



NOTE:
 FOR MONITORING WITH EXCLUSION SWITCH
 OPERATED, MOVE (R) LEAD FROM TERMINAL
 G TO TERMINAL L2.

Fig. 2—2503C (MD) Telephone Set, Connections

SECTION 502-503-120



NOTES:

1. WHEN DBAA MOUNTING CORD IS PLUGGED INTO THE 635-TYPE CONN BLOCK THE SHORT ACROSS T, T1, AND R, R1 IS REMOVED.
2. MUST BE ORDERED SEPARATELY.
3. THE 641E JACK MAY APPEAR AS A 641D(MD) JACK ON OLDER VERSIONS OF THE TELEPHONE SET.
4. TO HAVE LINE SWITCH INDICATION ONLY, MOVE (O-W) 641E OR 641D(MD) JACK LEAD FROM TERMINAL 8 (OR 7) ON TERMINAL STRIP TO TERMINAL 10 ON TERMINAL STRIP.
5. THE TELEPHONE SET IS FACTORY-WIRED FOR DATA CONTROL WITH EXCLUSION KEY NON-OPERATED. FOR DATA CONTROL WITH EXCLUSION KEY OPERATED REFER TO TABLE C.
6. TO DEACTIVATE MONITORING FEATURE MOVE (R) TRANSFORMER AND CAPACITOR ASSEMBLY LEAD FROM NETWORK TERMINAL L2 TO NETWORK TERMINAL G.

Fig. 3—2503CM Telephone Set, Connections (Sheet 1 of 2)

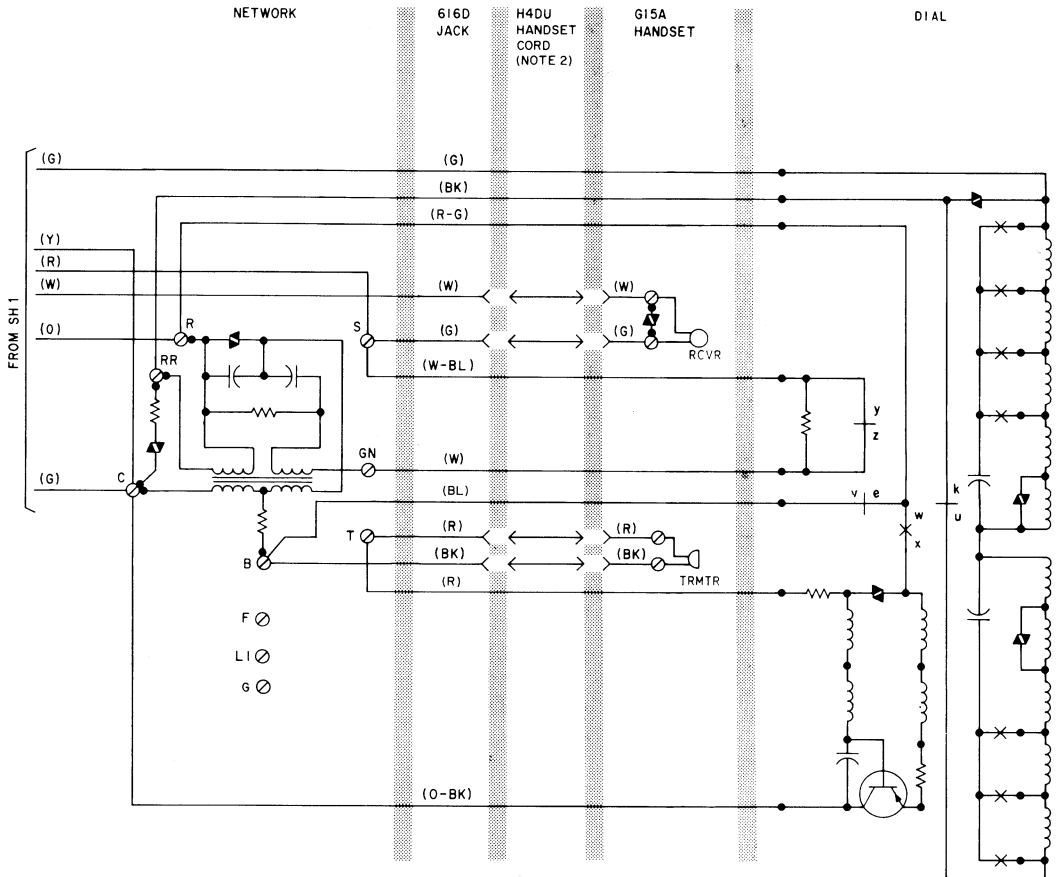


Fig. 3—2503CM Telephone Set, Connections (Sheet 2 of 2)

TABLE B

REPLACEABLE COMPONENTS

TEL SET (NOTE 1)	HANDSET	DIAL	RINGER	HOUSING ASSY	MTG CORD	HANDSET	MTG CORD JACK	HANDSET CORD JACK	FACEPLATE ASSY (NOTE 2)
2503CM-61	G15A-61	35Y3D	H1B	840698088	D8AA-87	H4DU	641E	616D	818645707 (P-86D570)
2503C-61 (MD)	G3A6-61			818636615 (P-86C661)	D6AA-29	H4CJ or H4CL	—	—	

Note 1: These sets are available in Light Gray (-61) only.

Note 2: Includes 812558039 (P-25E803) cord retainer.

TABLE C

POLARITY GUARD CONNECTIONS FOR 2503CM AND 2503C (MD) TELEPHONE SETS (SEE NOTE)

TYPE GUARD	LEAD	COLOR	REMOVE FROM NET.	CONNECT TO	
				NET.	POLARITY GUARD
840364202 Guard Part of D-180896 Kit of Parts	Line Cord	W-BL (G)*	L2		T
	Line Switch	Y	C		S
	Ringer	BK	L2		T
	Polarity Guard	G W		L2 C	
819040528 (P-90D052) Guard Assembly (MD)	Dial	BK	RR		T
	Line Switch	Y	C		S
	Polarity Guard	G W		RR C	

Note: For use when specified by local instructions for end-to-end signaling installations.

* The W-BL lead is used when the 2503CM telephone set is modified and the G lead is used when the 2503C (MD) set is modified.