

TELEPHONE SETS

881A102, 881B102, 881A103, 881B103, 881A104, AND 881B104

1. GENERAL

1.01 This section provides identification, installation, and connection information for the 881A102 (MD), 881B102, (Antique Gold**, Fig. 1); 881A103 (MD), 881B103, (Mediterranean**, Fig. 2), and 881A104 (MD), 881B104 (Early American**, Fig. 3) DESIGN LINE* telephone (*Cradle Phone*) sets.

*Trademark AT&TCo.

**Trademark American Telecommunication Corporation

1.02 This section is reissued to:

- Add information on the 881B102, 881B103, and 881B104 (modular) telephone sets (Table A)
- Show 881A102, 881A103, and 881A104 telephone sets (MD).

Warning: *Telephone apparatus or wiring shall not be installed in a location where minimum separation from other wiring as specified in Section 460-300-149 cannot be maintained.*

1.03 The customer's premises must be properly wired with an appropriate connecting block or jack in order to accept the D4BU-29 plug-ended mounting cord or the 225A adapter shipped with each set.

2. IDENTIFICATION

2.01 ♦The 881A102, B102, 881A103, B103, 881A104, and B104♦ (Rotary Dial) equipped telephone sets are new DESIGN LINE telephone sets being made available to the customer. The customer buys the housing and handset from the telephone company and the telephone company retains ownership of the transmission and signaling components. (Fig. 4 and 5). ♦The B code sets

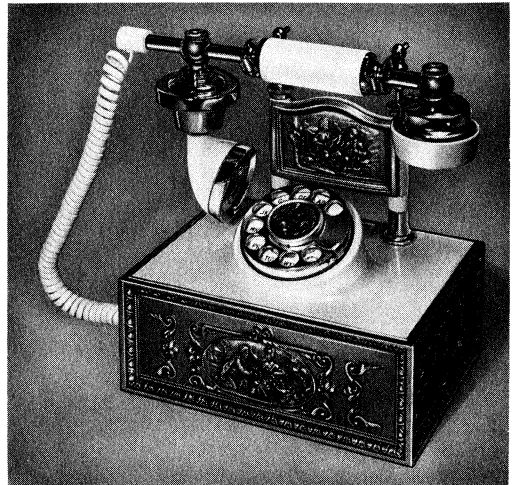


Fig. 1—♦881B102 DESIGN LINE Telephone Set♦

are equipped with a plug-ended H4DU handset cord instead of an H4EB cord.♦

Ordering Guide (Refer to Table A)

2.02 Basic Telephone Set Ordering Information:

Example: Set, Telephone, 881B102† is an antique gold cradle phone equipped with a rotary dial.

†Refer to Table A for available codes and ordering information.

2.03 These telephone sets are intended to be used as single line or two-party desk sets and are not recommended for use on four- and eight-party service.

NOTICE

Not for use or disclosure outside the Bell System except under written agreement



Fig. 2—881A103 DESIGN LINE Telephone Set



Fig. 4—Customer-Owned Components



Fig. 3—881A104 DESIGN LINE Telephone Set

3. INSTALLATION AND CONNECTIONS

3.01 These telephone sets are furnished from the factory fully assembled and wired for bridged ringing. To connect the telephone set, plug the mounting cord into a 625A connecting block or if the existing jack is a 548A or equivalent, use the 225A adapter furnished with each set.

3.02 The internal connections for the 881A102, 881B102, 881A103, 881B103, 881A104, and 881B104 telephone sets, for nonkey system use, are shown in Fig. 9.

3.03 Connections for 1A KTS do not require any telephone set modifications and are wired same as Fig. 9.

3.04 Connections for use with 1A1 or 1A2 KTS are shown in Fig. 10. Table C includes necessary wiring modifications required for 1A1 or 1A2 KTS use.

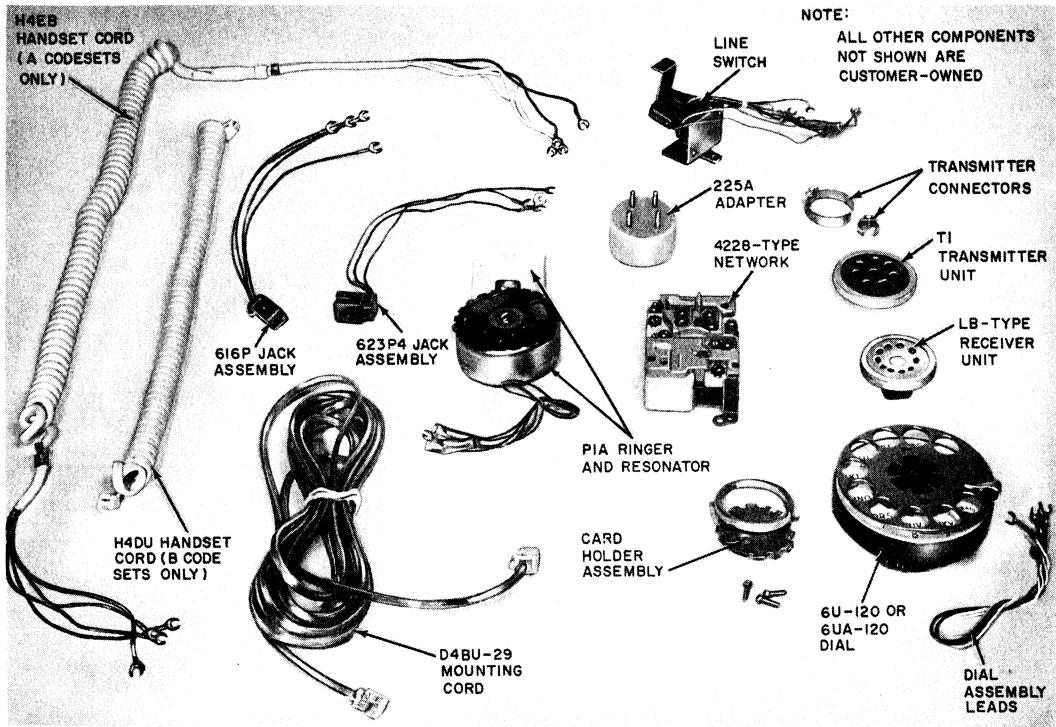


Fig. 5—Telephone Company-Owned Components

3.05 To gain access to the interior of these sets for wiring changes, refer to appropriate paragraph in Part 4.

3.06 *Line and Ringer Connections:*

- (1) For single line and two-party service, refer to Table B.
- (2) For adjustments and ringer cutoff feature of the PIA ringer, refer to Section 501-259-101.

4. REMOVAL OF TELEPHONE COMPANY-OWNED COMPONENTS

4.01 When it is desired to discontinue telephone service of these DESIGN LINE telephone sets, proceed as follows:

Note: Remove the telephone company-owned components that can be easily removed. Refer to Fig. 5 for identification of company-owned components.

◆ TABLE A ◆

AVAILABLE CODES AND ORDERING GUIDE

TEL SET CODE	TEL SET BASE	DIAL	TRMTR UNIT	RCVR UNIT	MTG CORD	HANDSET CORD	DESCRIPTION
881B102	840404941	6U-120 or 6UA-120	T1	LB1	D4BU-29	H4DU-58	Rotary Dial Antique Gold Cradle Phone
881B103						H4DU-03	Rotary Dial Mediterranean Cradle Phone
881B104						H4DU-03	Rotary Dial Early American Cradle Phone
881A102*	880A					H4EB-58	Rotary Dial Antique Gold Cradle Phone
881A103*						H4EB-03	Rotary Dial Mediterranean Cradle Phone
881A104*						H4EB-03	Rotary Dial Early American Cradle Phone

*MD

- (1) Remove four bottom cover mounting screws from bottom of telephone set and remove bottom cover (Fig. 6).
- (2) Remove four telephone set base mounting screws and withdraw the base (Fig. 7).
- (3) Remove three dial mounting screws and remove the rotary dial (Fig. 8).
- (4) Unscrew transmitter and receiver caps and remove T1 transmitter and LB1 receiver units.
- (5) Replace bottom cover (Fig. 6).

4.02 Follow local procedures for returning telephone company-owned components.

4.03 When it is desired to return a set to Western Electric for repair, it should be packed using the D-180600 Kit of Parts which contains packing materials and instructions.

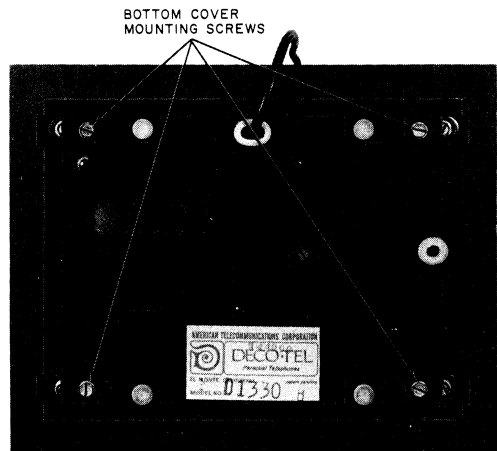


Fig. 6—881A102, 881A103, or 881A104 Telephone Set, Bottom View

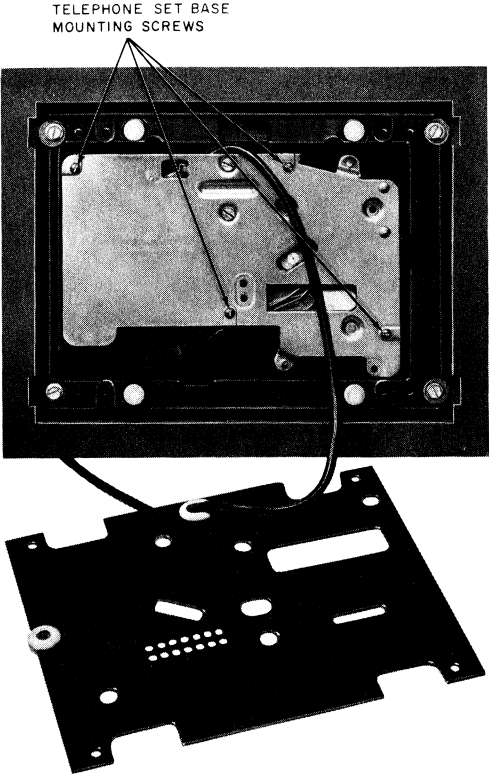


Fig. 7—Removing Telephone Set Base

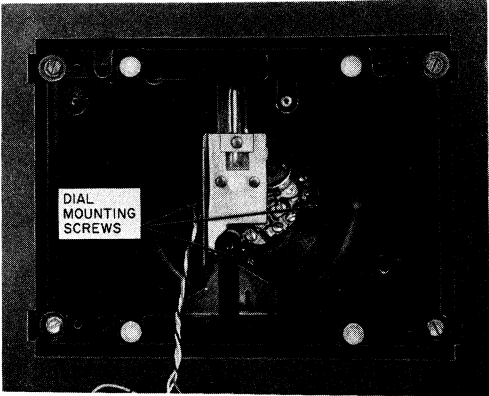


Fig. 8—Removing Dial

TABLE B
LINE AND RINGER CONNECTIONS †

WIRE OR LEAD	COLOR	INDIVID. OR BRIDGED	RING PARTY	TIP PARTY		
				NO IDENT GROUND	IDENTIFYING GROUND	
					1000Ω	2650Ω
Inside Wire at Jack	R	R	R	R	R	R
	G	G	G	G	G	G
	Y	Y	Y	Y	Y	Y
	BK	B	B	B	B	B
623P4 Line Jack Assy	R	A	A	L1	F	F
	G	L1	L1	A	L2	L2
	Y	G	G	G	G	G
	BK	L2	L2	L2	*	*
Ringer	R	K	K	K	K	K
	S-R	*	*	*	*	L1
	S	*	*	*	L1	*
	BK	L1	G	G	G	G
Line Switch	Y	A	A	A	L2	L2
	W	F	F	F	B	B

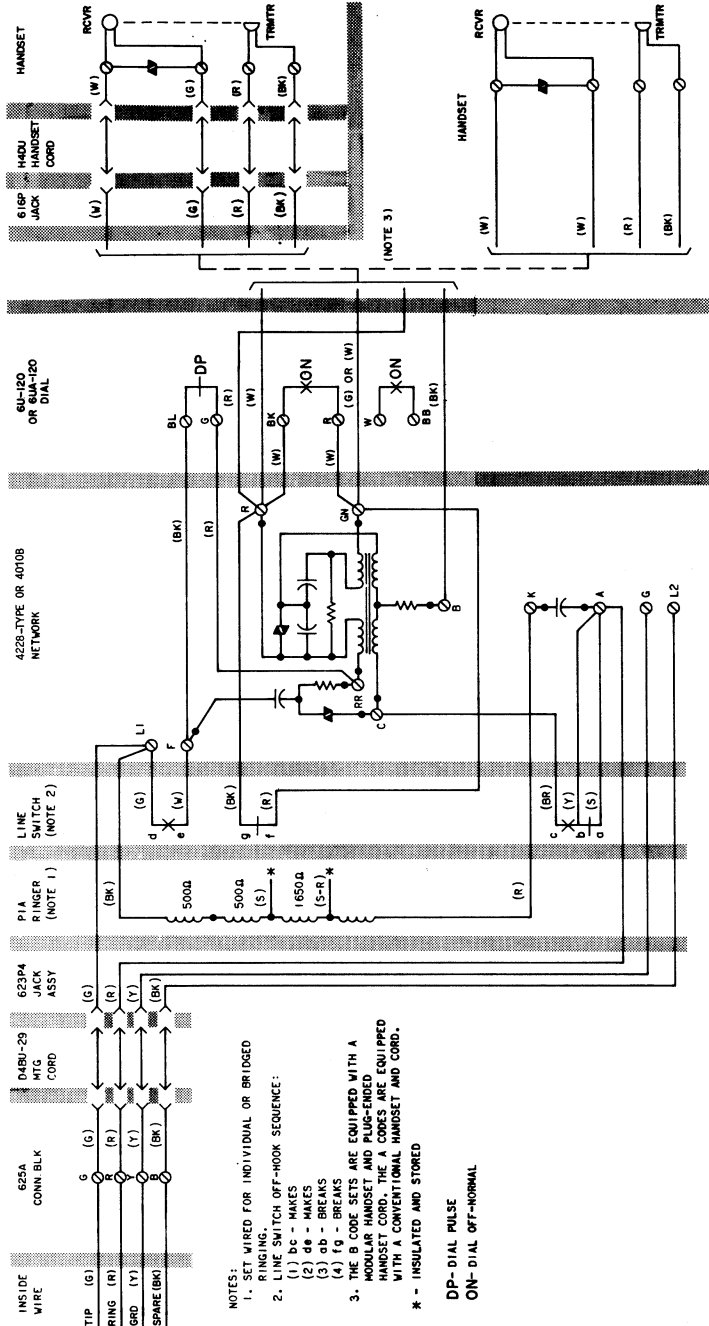
* Insulated and stored.

† For access to set wiring follow applicable steps in Part 4.

TABLE C
MODIFICATIONS FOR 1A1 OR 1A2 KTS *

LEAD	COLOR	NETWORK TERMINAL	
		REMOVE FROM	CONNECT TO
Line Switch	S	A	L2
	Y	A	L2
	BR	C	G
	G	L1	A
	W	F	C
623P4 Line Jack Assy	G	L1	F
Ringer	BK	L1	F

* For access to telephone set wiring follow applicable steps in Part 4.



- NOTES:
1. SET WIRED FOR INDIVIDUAL OR BRIDGED RINGING.
 2. LINE SWITCH OFF-HOOK SEQUENCE:
 - (1) bc - MAKES
 - (2) dd - BREAKS
 - (3) ee - BREAKS
 - (4) ff - BREAKS
 3. THE COILS ARE EQUIPPED WITH A HANDSET AND PLUG-ENDED HANDSET CORD. THE 'A' COILS ARE EQUIPPED WITH A CONVENTIONAL HANDSET AND CORD.
- * - INSULATED AND STORED

DP-DIAL PULSE
ON-DIAL OFF-NORMAL

Fig. 9 - 881A102, 881B102, 881A103, 881B103, 881A104, or 881B104 Telephone Set, Connections

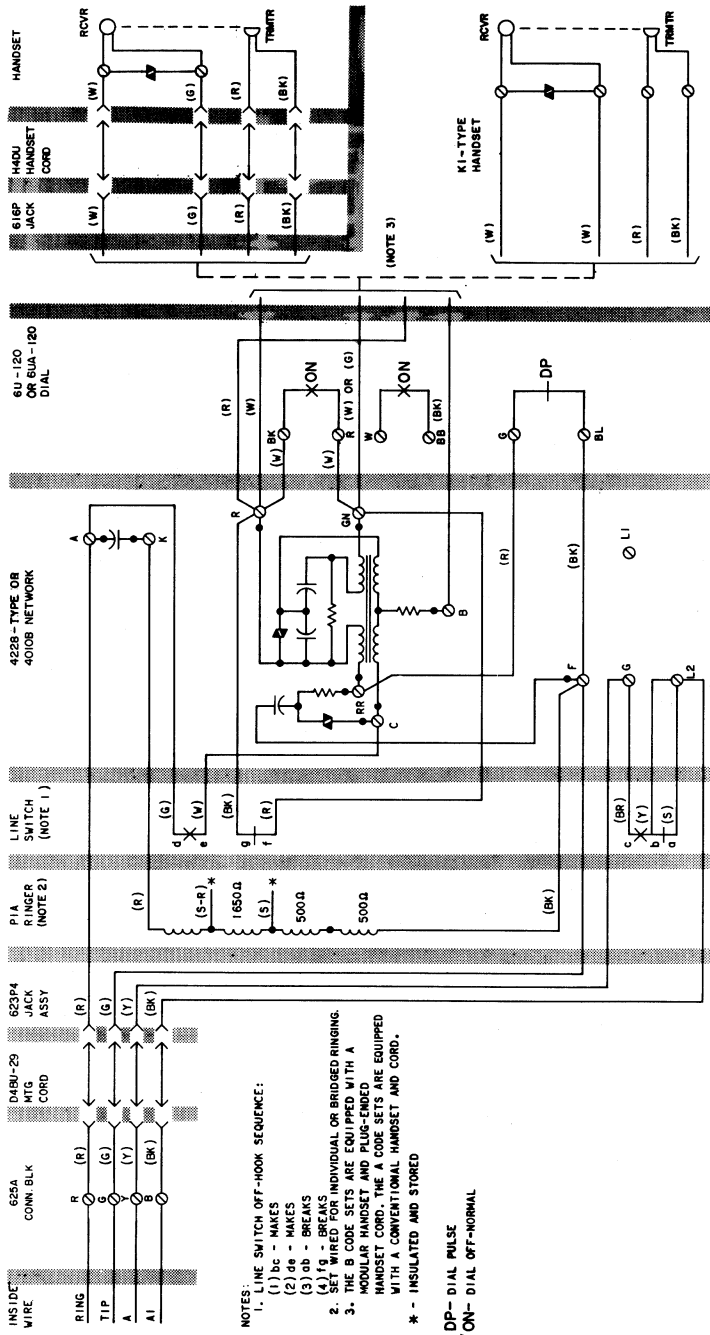


Fig. 10—881A102, 881B102, 881B103, 881A104, or 881B104 Telephone Set Wired for 1A1 or 1A2 KTS4