

OPERATOR'S MANUAL 17" HAND PUSH FRONT-THROW REEL MOWER



MCLANE

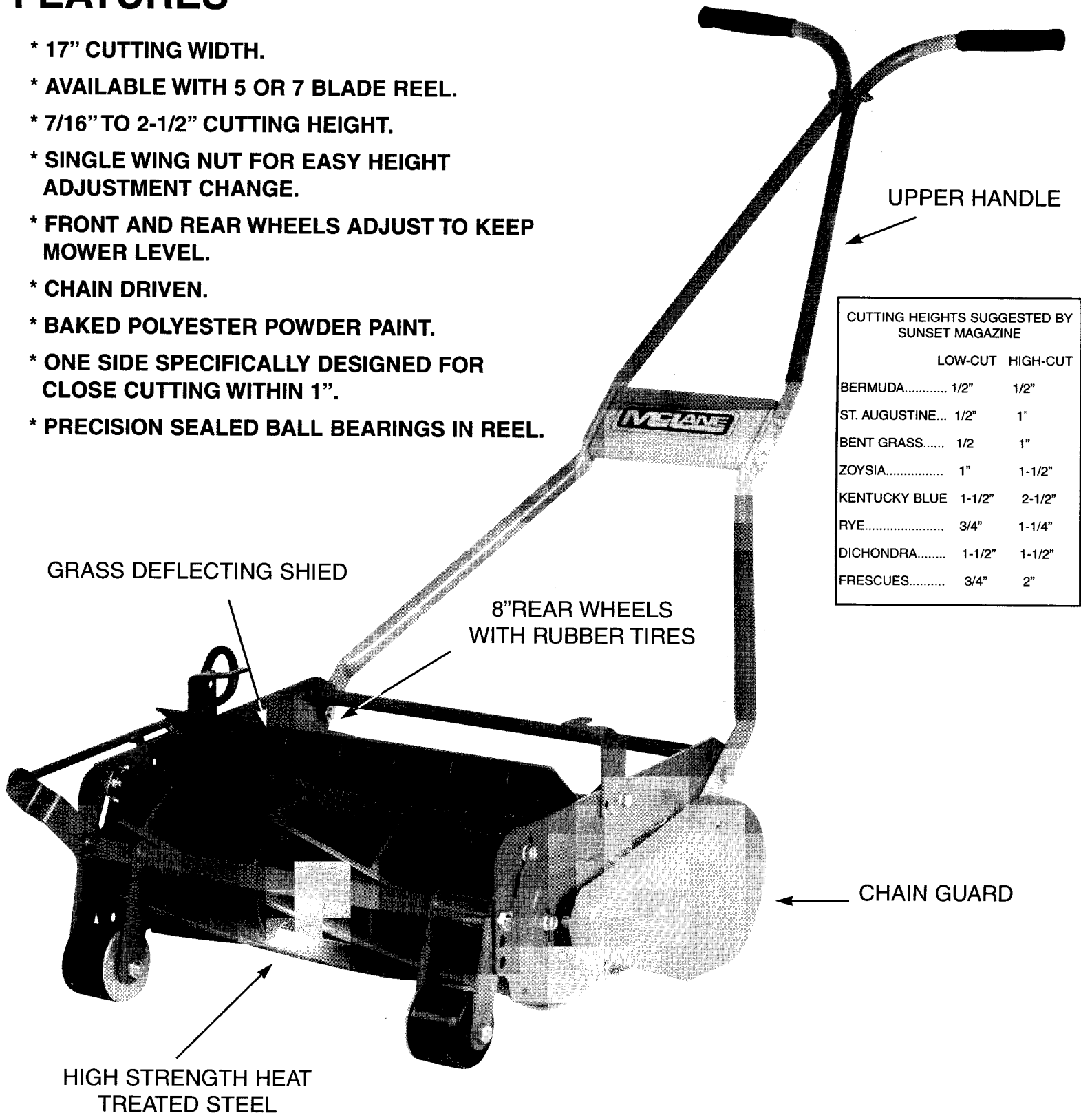
MANUFACTURING
INC.

7110 East Rosecrans Ave.
Paramount, CA 90723
Telephone
(562) 633-8158 (323) 636-8336
Fax: (562) 602-0651

17" FRONT THROW PUSH REEL MOWER

FEATURES

- * 17" CUTTING WIDTH.
- * AVAILABLE WITH 5 OR 7 BLADE REEL.
- * 7/16" TO 2-1/2" CUTTING HEIGHT.
- * SINGLE WING NUT FOR EASY HEIGHT ADJUSTMENT CHANGE.
- * FRONT AND REAR WHEELS ADJUST TO KEEP MOWER LEVEL.
- * CHAIN DRIVEN.
- * BAKED POLYESTER POWDER PAINT.
- * ONE SIDE SPECIFICALLY DESIGNED FOR CLOSE CUTTING WITHIN 1".
- * PRECISION SEALED BALL BEARINGS IN REEL.



CUTTING HEIGHTS SUGGESTED BY SUNSET MAGAZINE		
	LOW-CUT	HIGH-CUT
BERMUDA.....	1/2"	1/2"
ST. AUGUSTINE...	1/2"	1"
BENT GRASS.....	1/2"	1"
ZOYSIA.....	1"	1-1/2"
KENTUCKY BLUE	1-1/2"	2-1/2"
RYE.....	3/4"	1-1/4"
DICHONDRA.....	1-1/2"	1-1/2"
FRESCUES.....	3/4"	2"

POLYETHYLENE CATCHER (OPTIONAL)

CONTENTS

	Page		Page
Mower Features	1	Parts List	5
General Safety Suggestions	2	Parts Illustration	6
Assembly	3	Safety Rules	7
Operating Your Mower	4	Warranty	7
Maintaining Your Mower	4		
Reel maintenance	4		
General Maintenance	4		



CAUTION



This symbol marks important instructions relating to your personal safety. To avoid the possibility of injury, read and follow such instructions carefully.

When the manual refers to the left or right side of the mower, it means your left and right when standing in the operating position.



CAUTION



TO AVOID INJURY

READ OPERATOR'S MANUAL • MAINTAIN SAFETY DEVICES • REMOVE POTENTIAL THROWN OBJECTS • NEVER MOW NEAR PEOPLE • NEVER CARRY PASSENGERS • LOOK BEFORE BACKING • AVOID SLIPPERY OR STEEP AREAS • AVOID REEL UNLESS REEL IS STOPPED.

ASSEMBLY

TOOLS REQUIRED: 7/16" Wrench, 5/8" Wrench, 11/16" Wrench or Adjustable Wrench

NOTE: Reference to left or right side of mower is from operator's position at the handle, facing forward. The lawn mower is fully assembled except for the handle, handle brace plate and left and right lower handle braces. Everything is packed and shipped in one container, including package of hardware and handle grips.

ASSEMBLY:

STEP 1: Remove handle, 2 lower handle braces, handle brace plate and bag of parts from the mower carton. Now remove mower from carton.

STEP 2: Attaching handle braces and handle. The bolts will be in the bag of parts.

- A. Attach right and left lower handle braces to the mower. There is a pin welded to the bottom of the handle brace. Place the pin in the slotted hole located in the back of the side plate. Now place a 7/16"-14 x 5/8" bolt through the hole in the handle brace and the top hole of the side plate. Use a 7/16"-14 nut to secure handle brace to the mower.
- B. Place the upper handle over the handle braces making sure the holes in the upper handle align with the holes in the handle braces.
- C. Place the handle brace plate between the lower handle braces and bolt all pieces together with 1/4"-28 x 5/8" bolts. Place a 1/4"-28 nut on each bolt and tighten securely. (refer to Fig. 1)
- D. Slip on the handle grips.

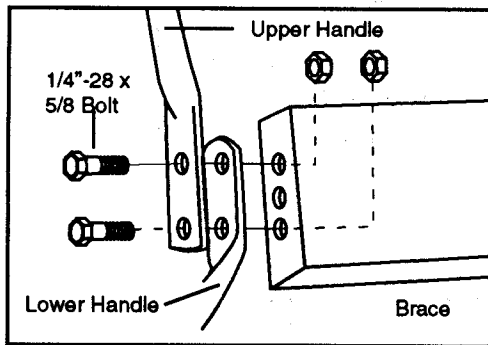


Fig. 1

NOTE: The two holes in the upper handle must be aligned with the two holes in the lower braces.

Top handle is shipped in two pieces. Inside of hardware baggie, locate the 1/4"-20-2" hex head bolt with nut attached. Remove nut from bolt and insert bolt through holes located just under curve of upper handle pieces. Place nut on bolt and tighten to remove any movement of two handle pieces.

INSTALLING GRASS CATCHER:

NOTE: The grass catcher is not included but is available as an accessory item.

1. SEE FIG. 2: Loosen catcher hook, nuts and bolts. Remove front nut and bolt from each catcher hook. Then raise catcher hooks and fasten both hooks with the bolts. Leave bolts loose until catcher is adjusted for proper clearance from the reel blades.
2. Attach grass catcher to the mower and make sure the catcher does not touch the reel blades. The catcher hooks are slotted so you can easily adjust the catcher so it will clear the reel blades.
3. When proper clearance is assured, tighten the nuts and bolts holding the hooks to the catcher.

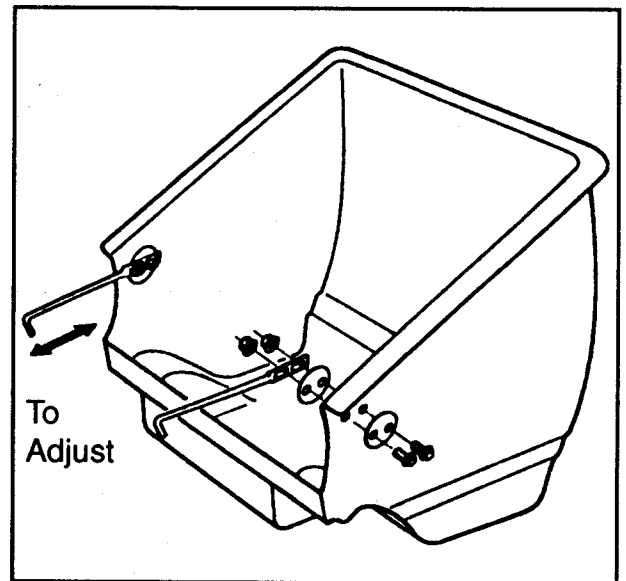


Fig. 2

OPERATION

MAINTENANCE

OPERATION

HEIGHT ADJUSTMENT

The cutting height of the mower is adjustable from 7/16" to 2-1/2" approximately. Fine adjustment is made with the notched bracket. (Ref. 58,)

Additional or medium range adjustments are made by changing position of front wheel bar assembly to a different hole. (Fig. 8) This is done by removing tie rod. **Note:** position of parts and washers so they will be replaced in the same order.

Exceptionally high cutting may be done by adjusting rear wheels. Adjustment brackets are adjusted to keep wheel travel to a minimum.

1. Remove chain guard by removing two 1/4"-20 x 1/2" bolts holding guard to mower.
2. Remove the chain by disconnecting the master chain link.
3. Remove the 5" rear wheel sprocket. Use a 1/4" allen wrench to loosen the set screw from the sprocket hub. Now pull the sprocket from the rear axle.
4. There are two 5/16"-18 x 1/2" bolts holding the height adjustment brackets to the side plates. (One bracket on each side) Remove the bolts, total of four, two on each side.
5. To raise the back of the mower, move height adjustment brackets down. To lower mower move brackets up. Align holes in bracket with slotted holes in the side plate and replace the 5/16"-18 x 1/2" bolts and tighten.
6. Now replace sprocket and chain.

Note: To keep mower level the height adjustment brackets must be raised or lowered equally on both sides of the mower. (Use same horizontal slotted holes on both sides).

LUBRICATION

Oil chain located under chain guard at intervals of approximately four hours usage.

REEL MAINTENANCE

Normally grinding of the reel is not recommended or necessary to insure proper cutting. This is due to the extreme hardness and great strength of the reel.

Sharpening and back lapping, when required, should always be done by a properly equipped service center.

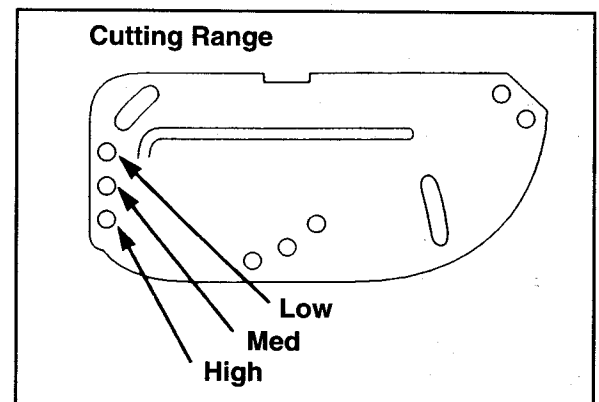


Fig. 8

McLane — 17" HAND PUSH REEL MOWER PARTS LIST

REF. NO.	PART NO.	DESCRIPTION	REF. NO.	PART NO.	DESCRIPTION
1	6500	Handle	53	7138	Sprag Roller (8)
1A	6515	1/4"-28 x 2" Bolt	54	7140-A	Dust Cover (2)
2	6002	Handle Grips (2)	55	1545	Rear Axle Height Adjustment Bracket (2)
3	1014	Handle Brace Plate	56	1070	7/16"-20 x 7/16" Set Screw (2)
4	1020	1/4"-28 x 5/8" Bolt (4)	57	1592	3/16 x 5/8 Roll Pin (2)
5	1015	1/4"-28 Nut (7)	59	3342	Height ADJ Notched BKT
6	6501	Lower Handle Brace (Left & Right)			
7	6502	7/16"-14 x 5/8" Bolt (2)			
8	1008	7/16"-14 Jam Nut (4)			
9	6503	Frame Assembly(Consists Of L+R Side Plate Welded With Cross Bars)			
11	1105	5/16"-18 x 5/8" Tapered Bolt (6)			
12	1106	Bushing For Tapered Bolt (6)			
15	1083	Right Catcher Hook Bracket			
16	1086	Left Catcher Hook Bracket			
17	1028	5/16"-18 x 3/4" Bolt (2)			
18	1075-A	5/16"-18 Nut (2)			
19	3060-A	Bed Knife			
20	1033	5/16"-18 x 1/2" Bolt (12)			
21	6553	Grass Shield			
22	3059-5	Reel-5 Blade Reel			
	3059-7	Reel-7 Blade Reel			
23	1109	Right Reel Bearing Retainer			
24	1111	Left Reel Bearing Retainer			
25	1108	Reel Bearing (2)			
30	6516	Bushing (2)			
31	6517	Large Roller (2)			
32	6518	Roller Disk (2)			
33	6525	Washer (2)			
34	1121	7/16-14 X 3" L Bolts (2)			
35	1074	5/16"-24 X 7/8 Bolt Notch BKT.			
36	6521	Roller Shaft Tube (2)			
37	6076	Height Adjustment Shaft			
37A	1075	5/16"-24 Nut For 1074 Bolt			
38	6526	Height Adjustment Bar			
39	6510	Chain Guard			
40	2034	1/4"-20 x 1/2" Bolt (2)			
41	7035	5/16" Flat Washer (2)			
42	6511	Chain Guard Holding Bracket			
43	1018	1/4"-28 x 7/8" Bolt (2)			
44	7132	#41 x 52 pitch Chain			
45	1069	8 Tooth Sprocket			
46	1068	30 Tooth Rear Wheel Sprocket			
47	6513	Rear Axle			
48	7136-A	8" Rear Wheel Rim (2)			
49	7061	8" Rear Wheel Tire (2)			
NS*	7135	8" Complete Rear Wheel (2)			
50	1547	Rear Wheel Spacer (2)			
51	1071	Axle Bearing (2)			
52	7137-A	Sprag (2)			

* NOT SHOWN

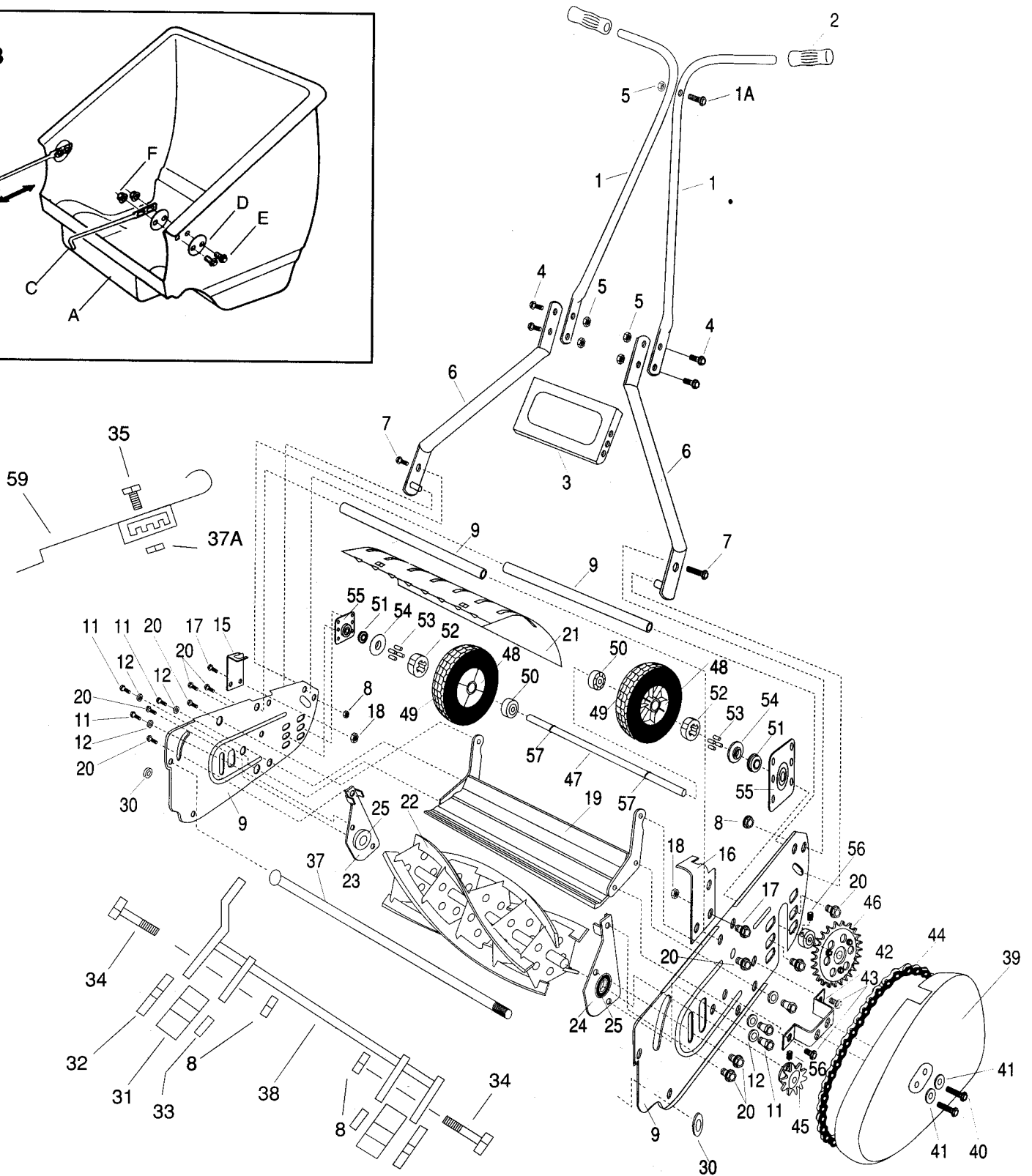
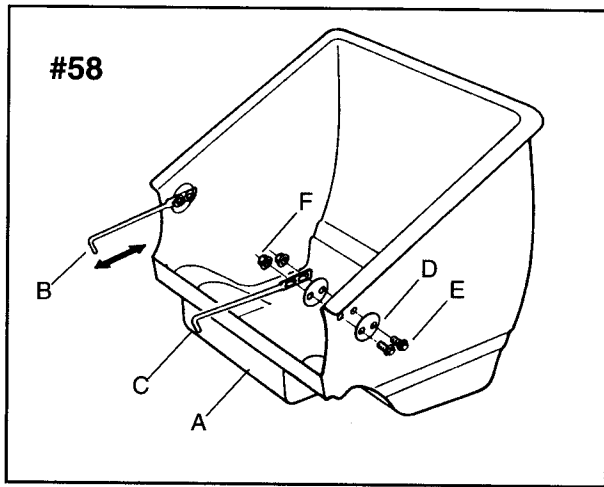
Each Part Sold As 1 Item.

() Shows How Many Used,Not How Many Received When Ordered.


ACCESSORY ITEMS

58	6083-C	Catcher Complete
A -	6083	Catcher Only
B -	6084	Right Catcher Hook
C -	6085	Left Catcher Hook
D -	6086	Reinforcement Washer (4)
E -	1018	1/4"-28 x 7/8" Bolt (4)
F -	1015	1/4"-28 Nut (4)
G -	1720	Sharpening Kit For Back Lapping
H -	1720-L	Sharpening Compound For Back Lapping

17" HAND PUSH FRONT THROW REEL MOWER PARTS ILLUSTRATION



Safety Rules

 **Improper use of the mower can result in injury. To reduce this possibility, give complete and undivided attention to the job at hand, and follow these safety precautions.**

TRAINING

1. Read the Operating and Service Maintenance Instruction Manual carefully. Be thoroughly familiar with the proper use of the equipment.
2. Never allow children to operate the mower.
3. Keep area of operation clear of all persons, particularly small children and pets.

PREPARATION

1. Thoroughly inspect the area where the equipment is to be used, and remove all stones, sticks, wire, bones and other foreign objects.
2. Do not operate equipment when barefoot or wearing open sandals. Always wear substantial foot wear.
3. Mow only in daylight or in good artificial light.
4. Never operate equipment in wet grass. Always be sure of your footing. Keep a firm hold on the handle and walk, never run.

OPERATION

1. Do not put hand or feet near or under rotating parts. Keep clear of discharge opening at all times.
2. After striking a foreign object, thoroughly inspect the mower for any damage, and repair the damage before operating the mower.
3. When cleaning, repairing or inspecting, make certain reel and all moving parts have stopped.
4. Wait until reel comes to a complete stop before removing grass catcher.
5. Mow across the face of slopes, never up-and-down. Exercise extreme caution when changing direction on slopes. Do not mow excessively steep slopes.
6. Never operate mower without proper guards, plates or other safety protective devices in place.

MAINTENANCE

1. Keep all nuts, bolts and screws tight to be sure equipment is in safe working condition.
2. Check grass catcher frequently for wear or deterioration.(optional on this item)
3. Oil chain at regular intervals of approximately four hours usage.
4. **DO NOT MODIFY MOWER.** Unauthorized modification to the mower may impair its function and safety and affect mower life.

Two Year Limited Warranty

For two years from purchase (60 days for commercial use) McLane Manufacturing Inc., will replace for the original purchaser, free of charge, any part or parts, found upon examination by any factory authorized service center, or by the factory in Paramount, California, to be defective in material or workmanship or both. All transportation charges on parts submitted for replacement under this warranty must be borne by purchaser. There are no other expressed warranties. Implied warranties, including those of merchantability and fitness for a particular purpose, are limited to two years from purchase and to the extent permitted by law. Any and all implied warranties are excluded. This is the exclusive remedy and liability for consequential damages. Any and all warranties are excluded to the extent exclusion is permitted by law. Some states do not allow limitations on how long an implied warranty lasts, and some states do not allow the exclusion limitation of consequential damages to the above limitation and exclusion may not apply to you. This warranty gives you specific legal rights and you may also have other rights which vary from state to state.

It is your responsibility to follow the maintenance instructions described in the owner's manual. Routine service (cleaning, blade sharpening) is your responsibility.

McLane Manufacturing, Inc.

Note: Operator abuse and improper assembly of product is not covered by any written or implied warranty. Read your owner's manual carefully.