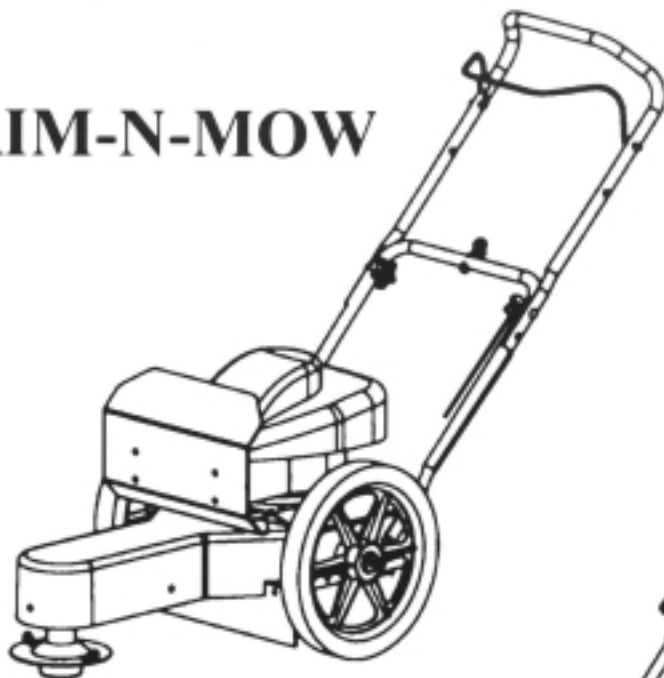


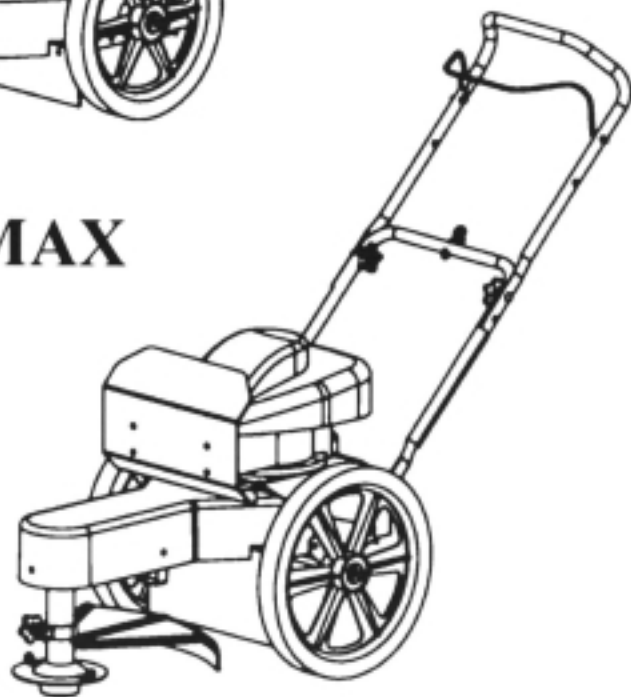
SWISHER

**OWNER'S
MANUAL**

TRIM-N-MOW



TRIM-MAX



CAUTION:

Read and follow all Safety Rules and Instructions Before Operating This Equipment.

Rev. 2.14.01

**Assembly
Operation
Service and Adjustment
Repair Parts**

SWISHER

P.O. BOX 67, WARRENSBURG, MISSOURI 64093 PHONE 660-747-8183 FAX 660-747-8650

Manufacturing quality lawn care equipment since 1945

Made in The

USA

LIMITED WARRANTY

The manufacturers' warranty to the original consumer purchaser is: This product is free from defects in materials and workmanship, for a period of one (1) year from the date of purchase by the original consumer purchaser. We will repair or replace, at our discretion, parts found to be defective due to materials or workmanship. This warranty is subject to the following limitations and exclusions:

- 1) Engine Warranty All engines utilized on our products have a separate warranty extended to them by the individual engine manufacturer. Any engine service difficulty is the responsibility of the engine manufacturer, and in no way is Swisher Mower Co., Inc. or its agents responsible for the engine warranty. The Briggs & Stratton Engine Service Hot-Line is 1-800-233-3723.
- 2) Commercial Use The warranty period for any product used for commercial or rental is limited to ninety (90) days from the date of original purchase.
- 3) Limitations This warranty applies only to products which have been properly assembled, adjusted, and operated in accordance with the instructions contained within this manual. This warranty does not apply to any product of Swisher Mower Co., Inc., that has been subject to alteration, misuse, abuse, improper assembly or installation, shipping damage, or to normal wear of the product.
- 4) Exclusions Excluded from this warranty are normal wear, normal adjustment and normal maintenance.

In the event you have a claim under this warranty, you must return the product to an authorized service dealer. All transportation charges, damage and loss incurred during transportation of parts submitted for replacement or repair under this warranty shall be borne by the purchaser. Should you have any questions concerning this warranty, please contact us toll-free 1-800-222-8183. The model number, serial number, date of purchase, and the name of the authorized Swisher dealer from whom you purchased the mower will be needed before any warranty claim can be processed.

THIS WARRANTY DOES NOT APPLY TO ANY INCIDENTAL OR CONSEQUENTIAL DAMAGES AND ANY IMPLIED WARRANTIES ARE LIMITED TO THE SAME TIME PERIODS STATED HEREIN FOR ALL EXPRESSED WARRANTIES. Some states do not allow the limitation of consequential damages or limitations on how long an implied warranty may last, so the above limitations or exclusions may not apply to you. This warranty gives you specific legal rights, and you may have other rights which vary from state-to-state. This is a limited warranty as defined by the Magnuson-Moss Act of 1975.

SAFETY INSTRUCTIONS



This Safety Alert Symbol indicates important messages in this manual. When you see this symbol, carefully read the message that follows and be alert to the possibility of personal injury.

Read this manual completely. This machine is capable of amputating hands and feet, and throwing objects. Failure to observe the following safety instructions could result in serious injury or death.

- Read the manual. Learn to operate this machine safely.
- Always disconnect the spark plug wire and place the wire where it cannot contact the spark plug, to prevent accidental starting the engine when setting up, transporting, adjusting or making repairs.
- Keep all shields and guards in place.
- Understand the speed, steering and stability of this machine. Know the positions and operations of all controls before you operate this machine. Check all of the controls in a safe area before starting to work with this machine.
- Allow only responsible adults who are familiar with these instructions to operate this machine. Never allow children to operate this machine.
- Clear the area of objects such as rocks, toys, wire, etc. that can be picked up and thrown by the blade.
- Be sure the area is clear of other people before mowing. Be aware of the mower discharge direction and do not point at anyone. Stop the machine if anyone enters the trimming area. Children are often attracted to the machine and the mowing activity. **Never assume that children will remain where you last saw them.** Keep children under the watchful care of another responsible adult.
- **No riders!**
- Do not put hands or feet near or under rotating parts. Keep clear of the discharge of opening at all times.
- Do not trim in reverse. Always look down and behind before and while backing.
- Turn off the blades when not trimming. Before leaving the machine, turn off the blades and stop the engine.
- Watch for traffic when operating near or crossing roadways.
- Do not operate the mower if it has been dropped or damaged in any manner or if the trimmer vibrates excessively. Excessive vibration is an indication of damage. Repair trimmer has necessary.
- Dress properly. Do not operate the mower when barefoot or wearing open sandals. Wear only solid shoes with good traction when mowing.
- Do not operate the machine while under the influence of alcohol or drugs.
- Operate self-propelled machines up and down slopes. There is significant risk of overturns when operating across slopes. Operate walk-behind machines across slopes. There is a significant risk of slipping under a walk-behind machine when operating up and down slopes.
- Never tamper with safety devices. Check their proper operation regularly.
- Stop and inspect the equipment if you strike an object. Repair, if necessary, before restarting.
- Never make adjustments or repairs with the engine running.
- Trimmer blades are sharp and can cut. Wrap the blades or wear gloves, and use extra caution when servicing them.
- Stop the trimmer when corssing gravel drives, paths, etc.

SLOPE OPERATION



Slopes are a major factor related to loss of control and slip accidents, which can result in severe injury. All slopes require extra caution. If you feel uneasy on it do not trim it.

- DO: Trim across the face of a slope and not up and down.
- DO: Remove objects such as rocks, tree limbs, etc.
- DO: Watch for holes, ruts or bumps. Tall grass can hide obstacles.
- DO NOT: Mow near drop-offs, ditches or embankments. The operator could lose footing or balance.
- DO NOT: Trim excessively steep slopes
- DO NOT: Trim on wet grass. Reduced footing could cause slipping.

CHILDREN

- Keep children out of the area and under the watchful care of another responsible adult.
- Be alert and turn the machine off if children enter the area.
- Before and when backing, look behind and down for small children.
- Never allow children to operate this machine.
- Use extra care when approaching blind corners, shrubs, trees or other objects that may obstruct vision.

SERVICE

- Use extra care handling gasoline and other fuels. They are flammable and vapors are explosive.
- Use only an approved container.
- Never remove gas cap or add fuel with the engine running.
- Allow engine to cool before refueling. Do not smoke.
- Never refuel the machine indoors.
- Never store the machine or fuel container where there is an open flame, such as a water heater.
- Never run a machine inside a closed area.
- Keep nuts and bolts tight and equipment in good condition.
- Never tamper with safety devices.
- Keep machine free of grass, leaves or other debris build up. Clean oil or fuel spillage. Allow machine to cool before storing.
- Stop and inspect the equipment if you strike an object. Repair if necessary before restarting.
- Never make repairs or adjustments with the engine running.

SAFETY DECALS



⚠ WARNING

AVOID SERIOUS INJURY OR DEATH

- DO NOT OPERATE WHEN CHILDREN OF OTHERS ARE AROUND. REMOVE OBJECTS THAT COULD BE THROWN BY THE CUTTING LINES.
- WEAR SAFETY APPROVED EYE PROTECTION WHEN OPERATING.
- DO NOT SERVICE OR ADJUST CUTTING HEAD OR OTHER MOVING PARTS UNLESS ENGINE IS STOPPED AND SPARK PLUG WIRE IS DISCONNECTED.
- KEEP SAFETY DEVICES, SUCH AS GUARDS AND DEFLECTORS, IN PLACE AND OPERATING.
- GO ACROSS SLOPES NOT UP AND DOWN.
- LOOK DOWN AND BEHIND BEFORE AND WHILE MOVING BACKWARDS.
- READ AND FOLLOW OWNER'S MANUAL.

TRIM-MAX Warning Decal

D64



⚠ WARNING

AVOID SERIOUS INJURY OR DEATH

- DO NOT OPERATE WHEN CHILDREN OF OTHERS ARE AROUND. REMOVE OBJECTS THAT COULD BE THROWN BY THE CUTTING LINES.
- WEAR SAFETY APPROVED EYE PROTECTION WHEN OPERATING.
- DO NOT SERVICE OR ADJUST CUTTING HEAD OR OTHER MOVING PARTS UNLESS ENGINE IS STOPPED AND SPARK PLUG WIRE IS DISCONNECTED.
- KEEP SAFETY DEVICES, SUCH AS GUARDS AND DEFLECTORS, IN PLACE AND OPERATING.
- GO ACROSS SLOPES NOT UP AND DOWN.
- LOOK DOWN AND BEHIND BEFORE AND WHILE MOVING BACKWARDS.
- READ AND FOLLOW OWNER'S MANUAL.

TRIM-N-MOW Warning Decal

D65

<p>⚠ CAUTION</p> <p>ADJUST STRING SHIELD TO KEEP DEBRIS FROM COMING BACK TOWARD OPERATOR.</p>	<p>IMPORTANT</p> <p>DO NOT CHANGE HEAD POSITION WHILE RUNNING</p>
--	--

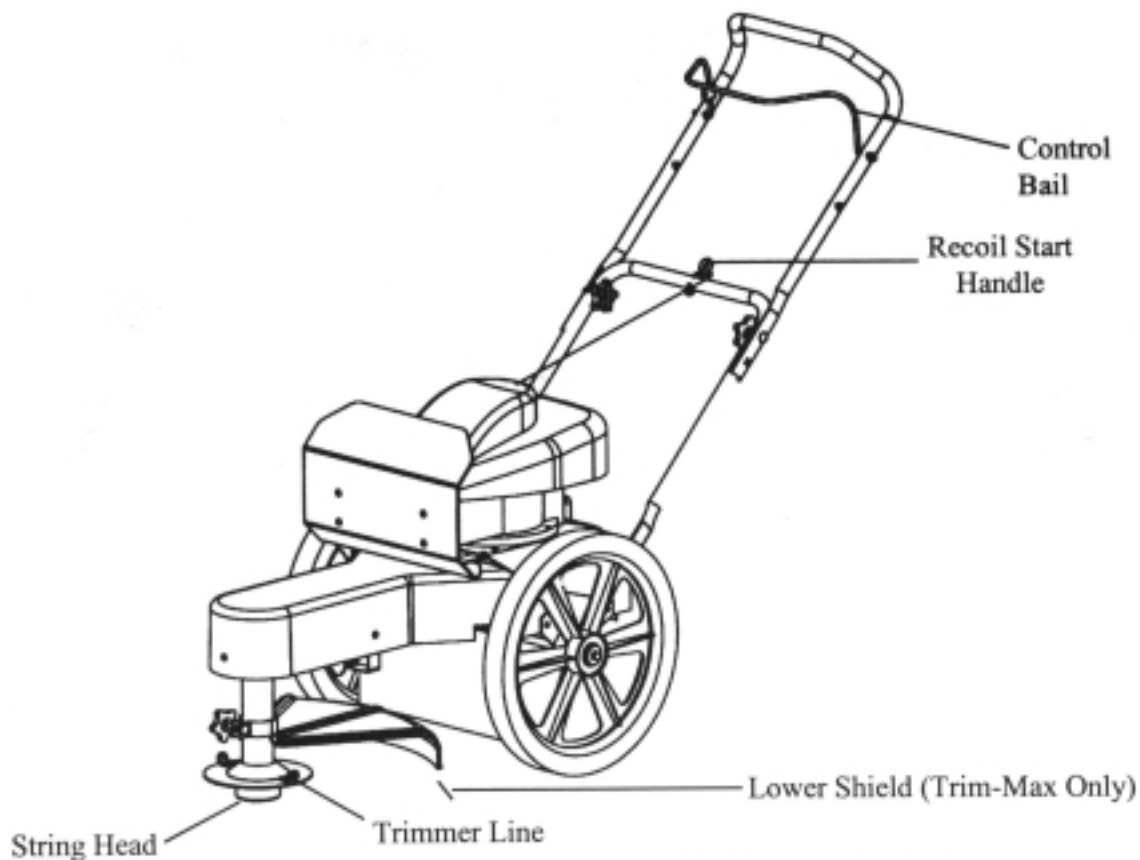
TRIMMER Caution Decal

D67

TRIMMER HEAD	
TILT	OFFSET
<p style="text-align: center;">LOOSEN</p> <p style="text-align: center;">TRIM EDGE</p>	<p style="text-align: center;">LIFT</p>

Offset Decal

D68



ASSEMBLY

Contents of Box:

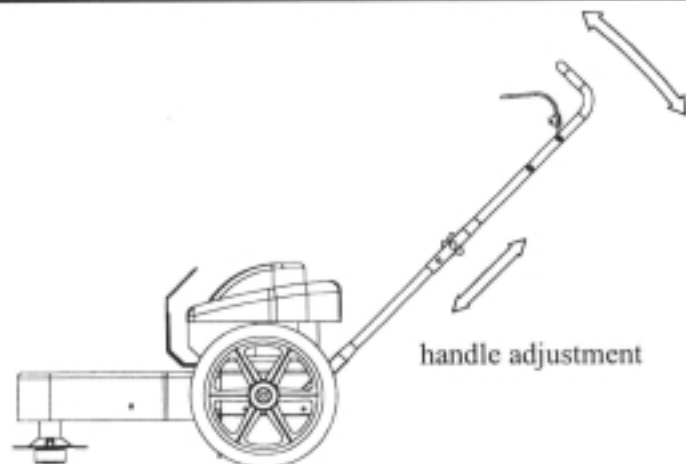
- Trimmer
- Parts bag containing:
 - Manual
 - Engine manual
 - Safety goggles
 - Bottle of engine oil
- 4 sets of .155 trimmer line

Tools Required:

- 1/2" wrench

INSTALLATION OF HANDLES

- Remove loose fasteners from lower handles.
- Pivot handles up and align lower hole in handles with hole on trimmer frame. Install hardware removed in previous step. Snug, but do not tighten bolts.
- Pivot upper handles to fit the lower handles. Tighten knobs.
- Adjust handles for comfortable operation.
- Tighten all bolts.
- Hold the control bail against the handle and slowly pull the engine recoil handle rope out. Thread the rope through the holder in the center of the lower handle.
- Handles may be adjusted up and down and in and out for comfortable operation.

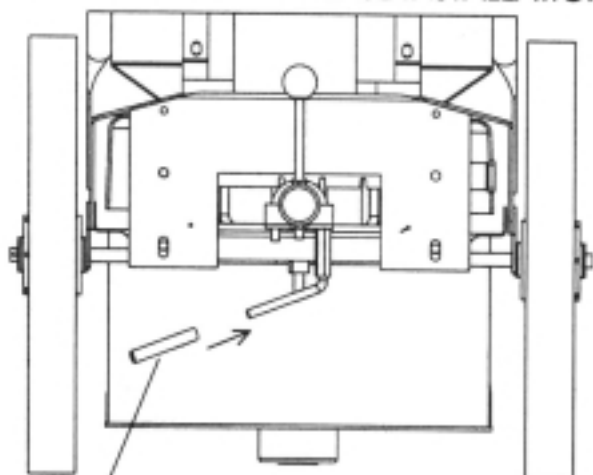


INSTALL YELLOW PLASTIC SLEEVE ON TILT HANDLE

WHEEL ASSEMBLY INSTRUCTIONS

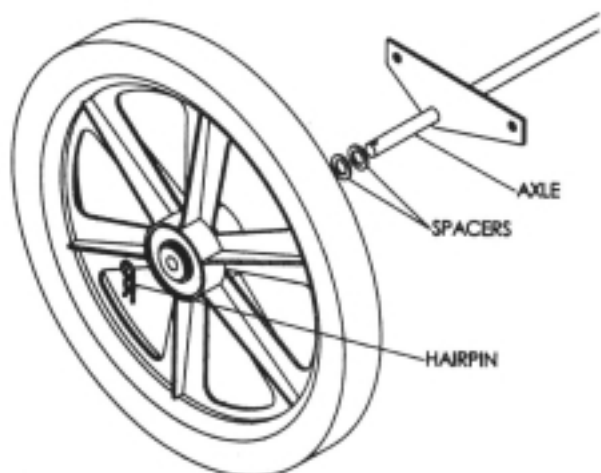
- Insert axle through lower holes in main frame assembly.
- Slide 2 spacers onto one side of axle.
- Slide wheel onto axle.
- Install hairpin.
- Push axle so hairpin contacts wheel.
- Repeat steps 2 thru 4 on other side.

APPLYING SOAP MAY EASE INSTALLATION.

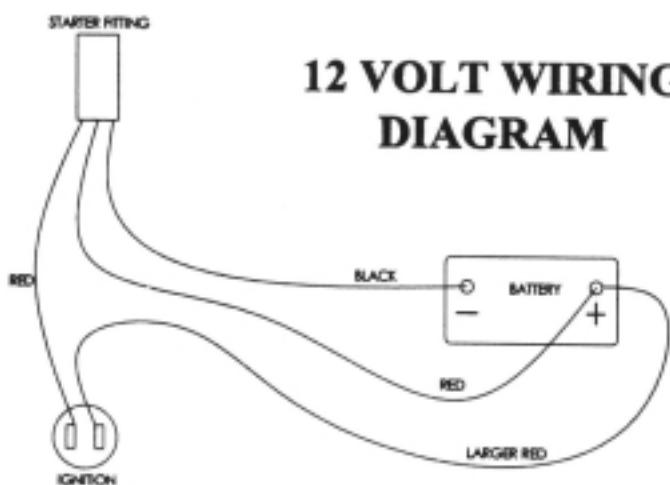


SLIP YELLOW PLASTIC SLEEVE OVER HANDLE

WHEEL ASSEMBLY



12 VOLT WIRING DIAGRAM



PREPARING THE UNIT FOR THE FIRST USE

- Fill engine crankcase with oil. A bottle has been provided with this unit. DO NOT OVERFILL.
- Fill the engine fuel tank with gasoline. GASOLINE SHOULD BE ADDED OUTSIDE IN A WELL-VENTILATED AREA.
- Check to ensure string has been installed properly. A diagram is provided just above the wheel for proper installation.

OPERATION

IMPORTANT! TO ENSURE PROPER OPERATION, CLEAN THE ENGINE AND TRIMMER REGULARLY. SEE YOUR ENGINE OWNER'S MANUAL FOR FURTHER DETAILS.

To start the trimmer:

- Remove any built up debris from engine.
- Pull control bail against the handle and hold.
- Push primer button on engine as directed.
- Pull back sharply on recoil starter handle.
- 12 V Electric Start: Turn key clockwise until starter engages, release when engine starts
- Begin trimming.



The operation of any cutter can produce foreign objects to be thrown into the eyes, resulting in severe eye damage. Always wear certified safety glasses or wide vision safety goggles over spectacles before starting any cutting machine and while operating such a machine.



The operation of any cutter produces sound waves that are damaging to the human hear. Ear protection is recommended.



CAUTION!

Tragic accidents can occur if the operator is not alert to the presence of children. Children are often attracted to the machine and the mowing activity. **Never assume that children will remain where you last saw them.**

Important! For safest operation, make sure debris is directed away from you and others.

Important! 12 V Units. For optimum battery performance you should run engine for at least 15 minutes after each start to keep battery charged

To stop the trimmer:

- Release the control bail. Engine will stop immediately.

TRIMMING HINTS

- Do not lift the trimmer head when trimming. Let the head rest lightly touching the ground.
- Keep an eye on the length of the trimmer strings. As the strings get shorter they become less effective at cutting and will take longer to trim properly. Replace the string as necessary. (See installing string)
- Do not trim wet grass.
- Use caution when trimming slopes.
- Use the proper length of string. Using a string too long for the unit will cause stalling and unacceptable operation.



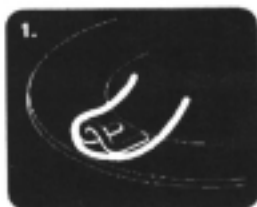
Do not operate the trimmer if it vibrates abnormally. Excessive vibration is a sign of damage. Stop the engine and safely check for damage and repair as required.

INSTALLING STRING

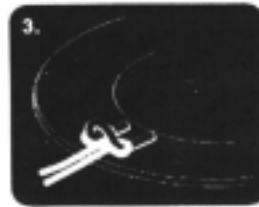
Important! Use the proper length of string. Using a string too long for the unit will cause stalling and unacceptable operation.

3 - 5 HP use 16" string
5+ HP use 18" string

- Loosely fold string in half.
- Place loop of string against outside of loop on the trimmer head.
- Bring ends around and through the loop and over the string loop.
- Pull ends to tighten loop.



String Diagram Decal



D63

TRIM-MAX OPERATION

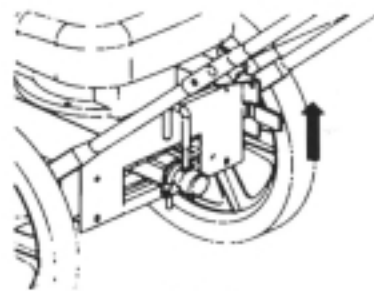
The Trim-Max trimmer is designed to also be used as an edge trimmer and to offset left to right for easier close trimming.

EDGE TRIMMING/BEVEL CUT

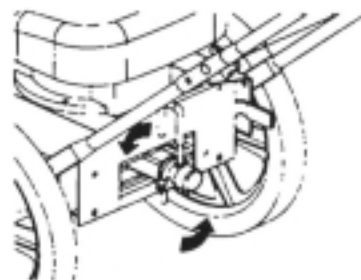
The trimmer disk may be tilted from horizontal to vertical so that it may be used as an edge trimmer. The head may also be tilted slightly to trim closer. This may be handy for trimming foundations without damaging the siding.

To Tilt:

- Stop Engine.
- Make sure head is in the straight forward position. (See offset operation)
- Loosen the trimmer tilt clamp lever. (Clockwise)
- Tilt head to desired position.
- Tighten trimmer tilt clamp lever. (Counter Clockwise)
- Adjust lower string shield to keep debris from coming back at operator.



Trim-Max
Pivot Adjustment



Trim-Max
Tilt Adjustment

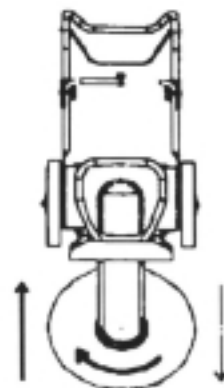
OFFSET TRIMMING

The trimmer head may be offset to the left or right to allow trimming under bushes, fences, etc.

To Offset:

- Stop Engine.
- Raise offset lever.
- Push or pull handles to achieve desired offset.
- Release offset lever. Make sure head has locked into position.
- Adjust lower trimmer shield to keep debris from coming back at operator.

IMPORTANT! NOTE DIRECTION OF DEBRIS WHEN OFFSETTING HEAD. OFFSETTING TRIMMER TO THE LEFT IS RECOMMENDED.



Direction of Debris

TRIMMER MAINTENANCE

Make sure your trimmer is in safe working condition by keeping the following guidelines in mind every time you use your trimmer.

- Keep trimmer in good operating condition and keep all guards and shields in place. DO NOT operate this trimmer if any of the shields and guards are missing.
- Check all fasteners for secure fit to keep equipment in safe working order. Make adjustments as necessary.
- To reduce fire hazards, keep engine free of grass, leaves or excessive grease.
- DO NOT operate trimmer with a damaged or missing muffler. DO NOT tamper with exhaust system; this may cause a fire hazard.
- DO NOT operate engine if air cleaner or the cover over the carburetor air intake is missing. Removal of these parts could create a fire hazard.
- Before cleaning, making adjustments or repairing the trimmer, STOP engine, disconnect spark plug wire and allow engine to cool.
- Handle gasoline with care. DO NOT smoke or use open flame near gasoline. Use only approved gasoline containers. Never fuel or run trimmer in poorly ventilated areas, such as a garage or utility building.
- Always replace fuel tank cap. Be sure to clean up any spilled gasoline.
- Do not change the engine governor settings or over-speed the engine; severe injury or damage may result.
- Never store mower, with gasoline in the tank, inside a building where fumes may reach an open flame or spark. Always allow engine to cool before storing



**NEVER ADD GASOLINE TO A HOT ENGINE - ALLOW ENGINE TO COOL BEFORE ADDING GASOLINE
SERVICE & ADJUSTMENT**



**WARNING- ALWAYS STOP ENGINE AND DISCONNECT SPARK PLUG WIRE BEFORE PERFORMING ANY ADJUSTMENTS
OR SERVICE.**

ENGINE

- Refer to the engine service manual provided with this unit.

BELT

- Occasionally check the belt for wear. A worn belt should be replaced.

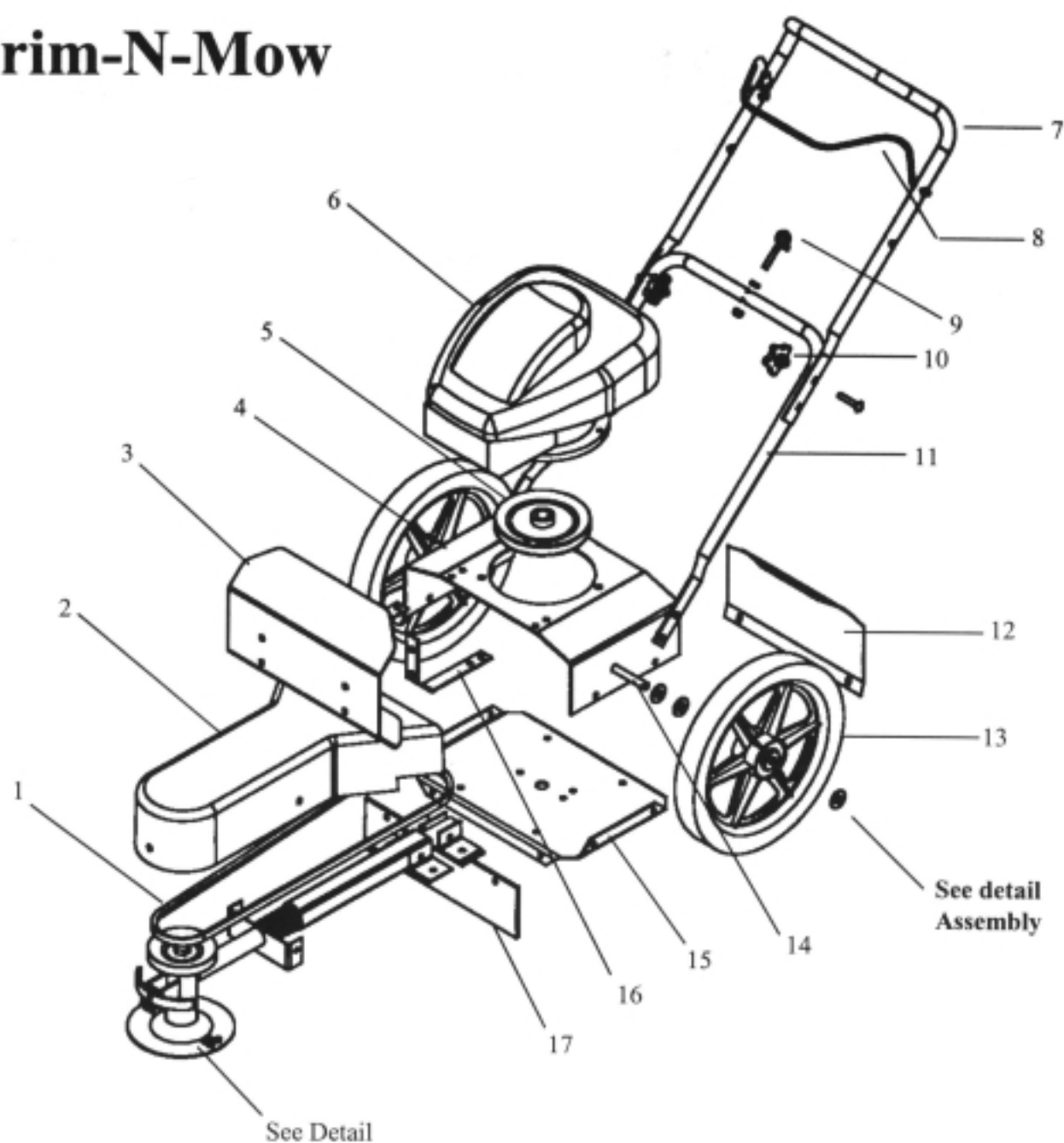
BELT ADJUSTMENT

- The TRIM-N-MOW has an automatic belt tightener and needs no further adjustment.
- The TRIM-MAX has an automatic belt tightener that automatically adjusts when the head is tilted. If you do not regularly tilt the head on your trimmer, it is recommended that you loosen the head twice a year. (See edge trimming)

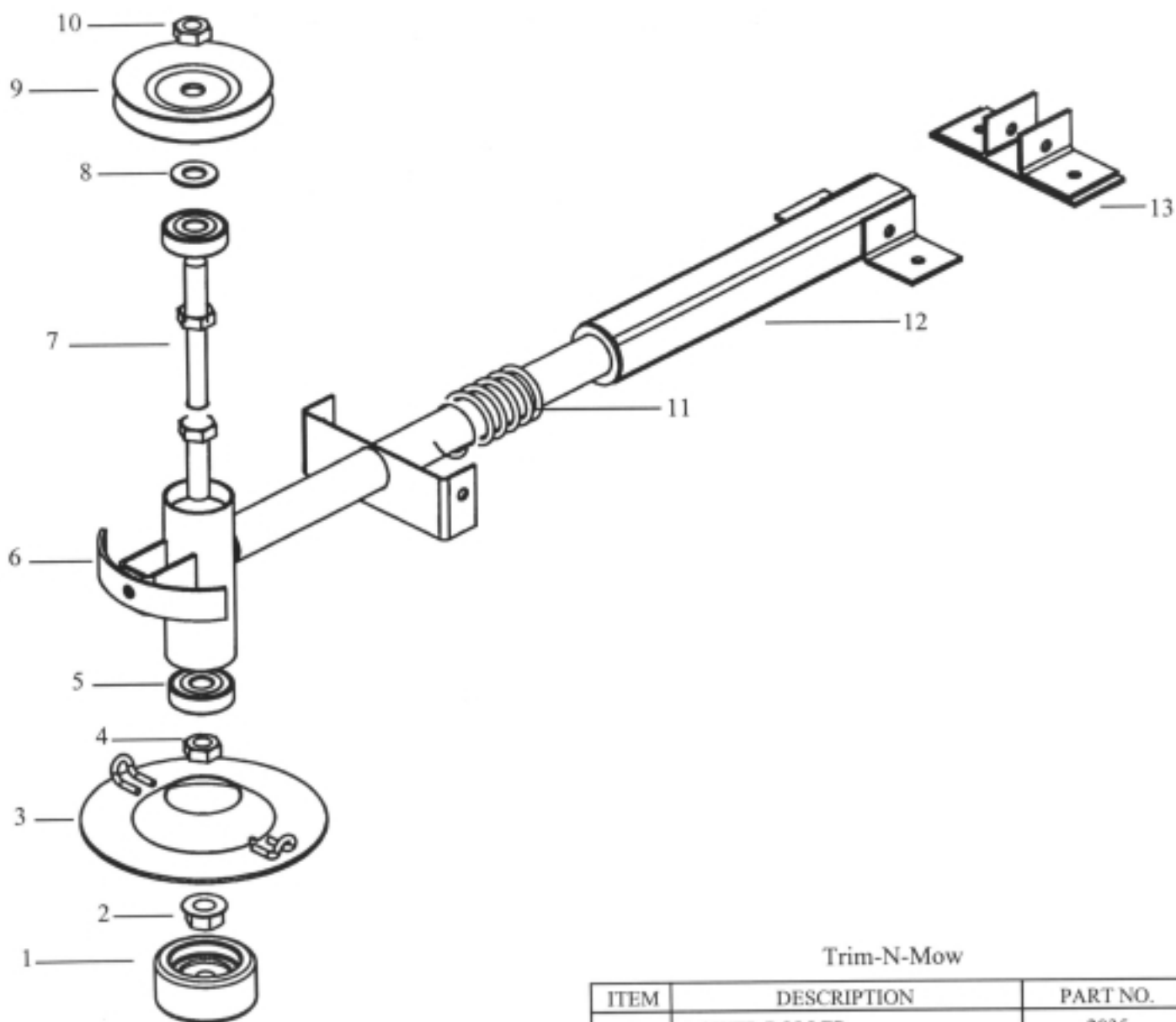
BELT REPLACEMENT

- Remove front belt cover.
- Push trimmer head toward back of unit, compressing tensioner spring.
Trim-Max: Loosen trimmer tilt clamp lever.
- Remove old belt.
- Install new belt by first routing belt under the engine and around the engine pulley.
- Push trimmer head toward back of unit, compressing tensioner spring.
- Install belt over front pulley.
- Release trimmer head. Ensure that belt is correctly installed in the groove of the engine and front pulleys.
- Reinstall front belt shield.

Trim-N-Mow



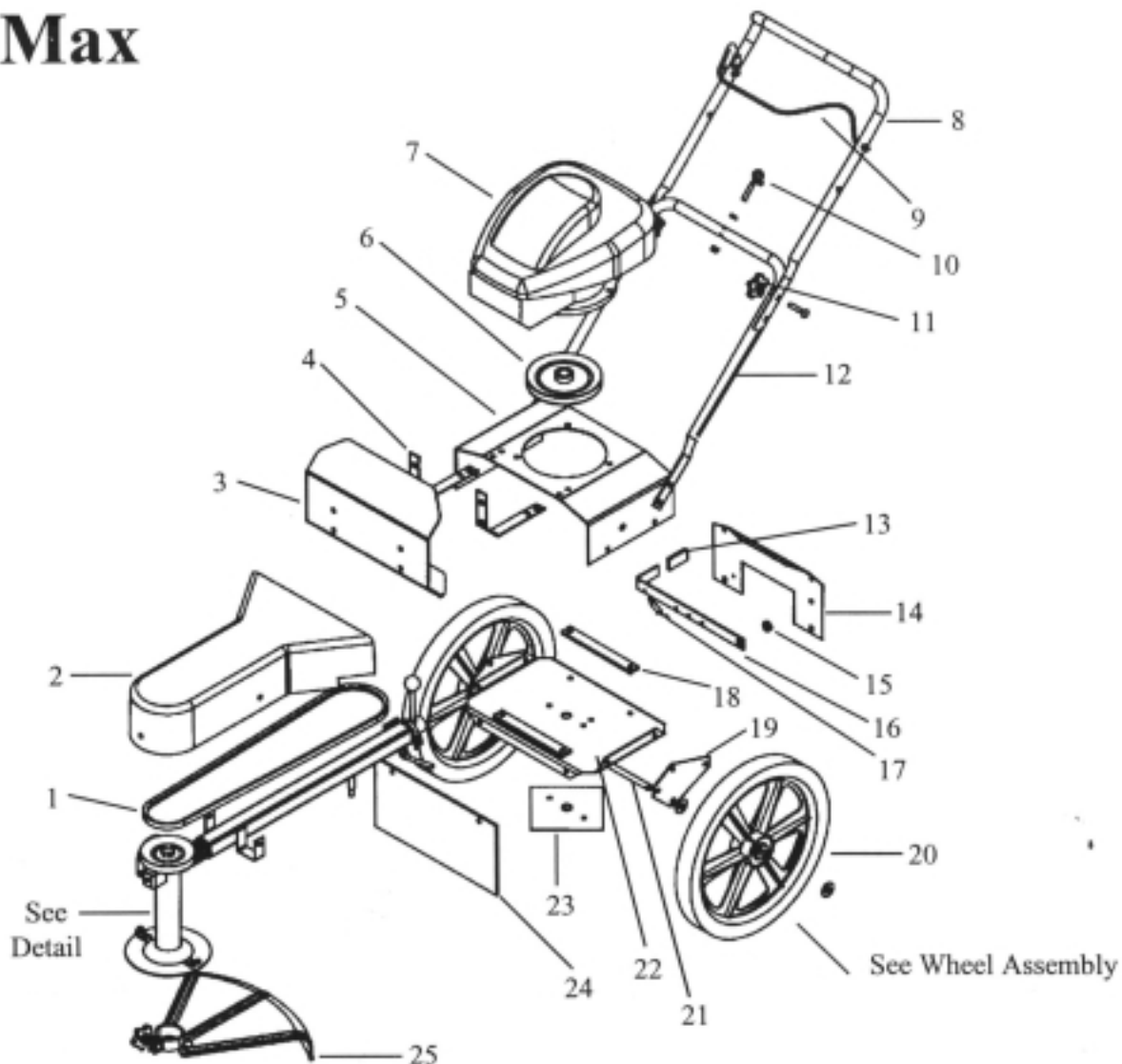
ITEM	DESCRIPTION	PART NO.	ITEM	DESCRIPTION	PART NO.
1	V-BELT	66LR2	14	AXLE	2025
2	BELT SHIELD	2019	15	LOWER MOTOR BASE	2006
3	ACRYLIC SHIELD	2017	16	SHIELD STRAP	2018
4	UPPER MOTOR BASE	2005	17	RUBBER GUARD	2027
5	ENGINE PULLEY	2050	*	OPERATOR PRESENCE CABLE	2034
6	ENGINE	-	*	TRIMMER STRING	2052
7	UPPER HANDLE	2016	*	HAIRPIN COTTER	NB127
8	CONTROL BAIL	2020	*	SAFETY GOGGLES	2056
9	ROPE GUIDE	2046	*	CONDUIT CLIP	2051
10	KNOB	2030	*	STRING INSTALL DECAL	D63
11	LOWER HANDLE	2015	*	CAUTION DECAL	D65
12	REAR COVER	2026	*	STANDARD HARDWARE	-
13	WHEEL 14"	2002	*	ITEM NOT SHOWN	-



Trim-N-Mow

ITEM	DESCRIPTION	PART NO.
1	LOWER ROLLER	2035
2	5/8 FLANGE NUT	-
3	TRIMMER DISK	2021
4	5/8 JAM NUT	-
5	BEARING 5/8	B98 5/8
6	HEAD WELDMENT	2010
7	TRIMMER SHAFT	2024
8	5/8 WASHER	-
9	HEAD PULLEY	2049
10	5/8 NYLOC NUT	-
11	COMPRESSION SPRING	2033
12	SLIDE WELDMENT	2007
13	STABILIZER WELDMENT	2032
*	STANDARD HARDWARE	-
*	ITEM NOT SHOWN OR NOTED	

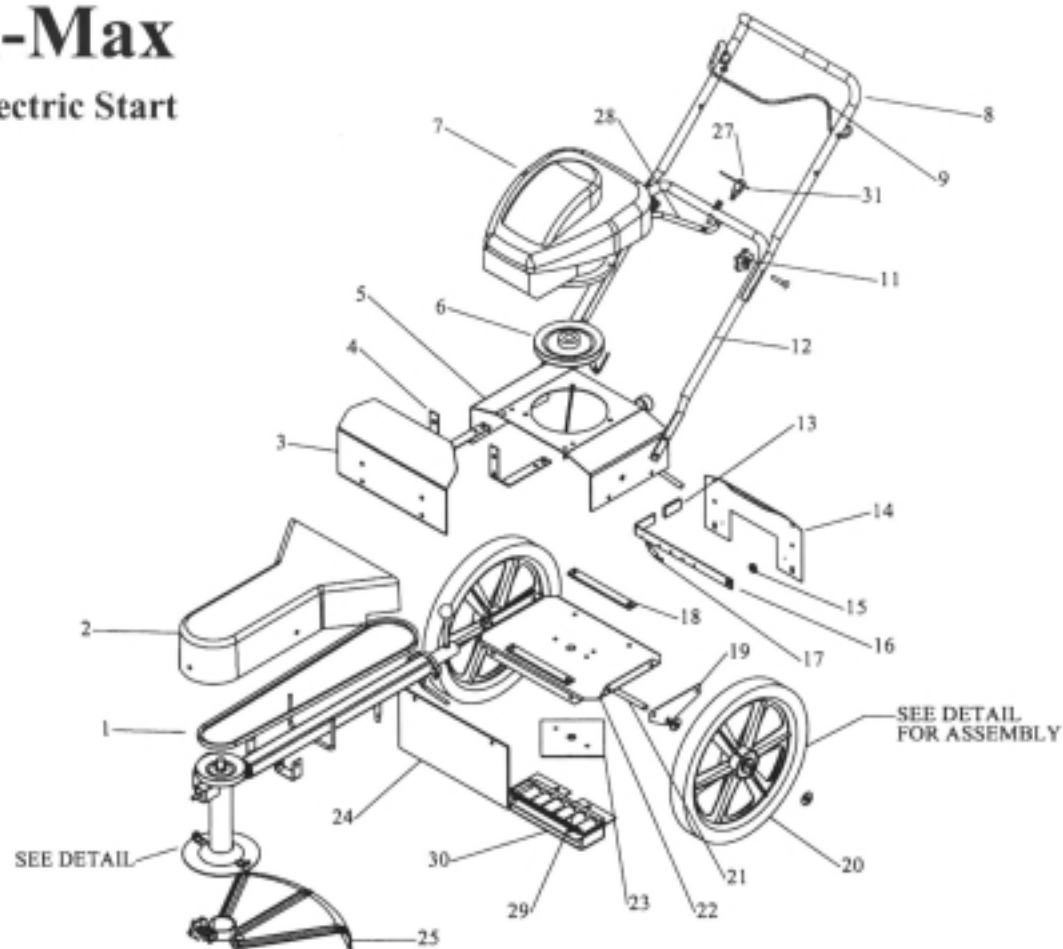
Trim-Max



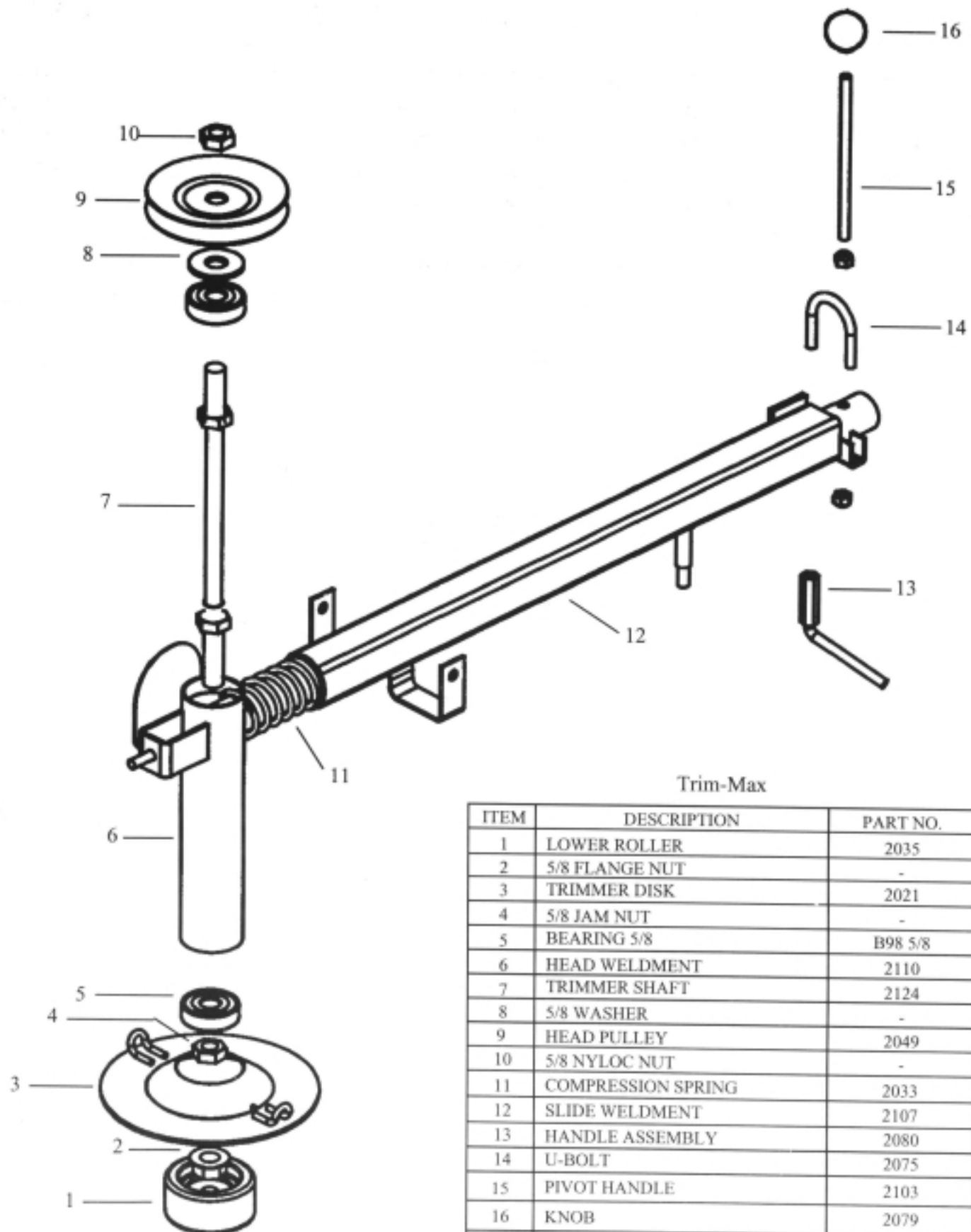
ITEM	DESCRIPTION	PART NO.	ITEM	DESCRIPTION	PART NO.
1	V-BELT	66LR2	20	WHEEL 16"	2003
2	BELT SHIELD	2119	21	AXLE	2025
3	SHIELD	2092TK	22	LOWER MOTOR BASE	2006
4	SHIELD STRAP	2018	23	PIVOT WELDMENT	2073
5	UPPER MOTOR BASE	2005	24	RUBBER GUARD	2127
6	ENGINE PULLEY	2050	25	LOWER SHIELD ASSY.	2076
7	ENGINE	-	26	OPERATOR PRESENCE CABLE - Tecumseh	2034
8	UPPER HANDLE	2016	26	OPERATOR PRESENCE CABLE - Briggs	2034BS
9	CONTROL BAIL	2020	*	REAR CAP	2068
10	ROPE GUIDE	2046	*	TRIMMER STRING	2054
11	KNOB	2030	*	HAIRPIN COTTER	NB127
12	LOWER HANDLE	2015	*	SAFETY GOGGLES	2056
13	HANDLE GRIP	2077	*	CONDUIT CLIP	2051
14	REAR COVER	2126	*	STRING INSTALL DECAL	D63
15	SPACER BUSHING	B99S	*	CAUTION DECAL	D64
16	HANDLE PIVOT STOP	2040	*	STANDARD HARDWARE	-
17	SPRING	2069	*	ITEM NOT SHOWN OR NOTED	
18	WEAR STRIP	2116			
19	AXLE PLATE	2106			

Trim-Max

12 Volt Electric Start



ITEM	DESCRIPTION	PART NO.	ITEM	DESCRIPTION	PART NO.
1	V-BELT	66LR2	22	LOWER MOTOR BASE	2006
2	BELT SHIELD	2119	23	PIVOT WELDMENT	2073
3	SHIELD	2092TK	24	RUBBER GUARD	2127
4	SHIELD STRAP	2018	25	LOWER SHIELD ASSY.	2076
5	UPPER MOTOR BASE	2005	26	OPERATOR PRESENCE CABLE	2034
6	ENGINE PULLEY	2050	27	KEY SWITCH	KSM
7	ENGINE	-	28	WIRING HARNESS	2120
8	UPPER HANDLE	2016	29	BATTERY	2101
9	CONTROL BAIL	2020	30	BATTERY COVER	2105
10	N/A		31	KEY SWITCH MOUNT PLATE	2118
11	KNOB	2030	*	REAR CAP	2068
12	LOWER HANDLE	2015	*	20 OZ. ENGINE OIL	2058
13	HANDLE GRIP	2077	*	TRIMMER STRING	2054
14	REAR COVER	2126	*	HAIRPIN COTTER	NB127
15	SPACER BUSHING	B99S	*	SAFETY GOGGLES	2056
16	HANDLE PIVOT STOP	2040	*	CONDUIT CLIP	2051
17	SPRING	2069	*	STRING INSTALL DECAL	D63
18	WEAR STRIP	2116	*	CAUTION DECAL	D64
19	AXLE PLATE	2106	*	STANDARD HARDWARE	-
20	WHEEL 16"	2003	*	ITEM NOT SHOWN OR NOTED	
21	AXLE	2025			



Trim-Max

ITEM	DESCRIPTION	PART NO.
1	LOWER ROLLER	2035
2	5/8 FLANGE NUT	-
3	TRIMMER DISK	2021
4	5/8 JAM NUT	-
5	BEARING 5/8	B98 5/8
6	HEAD WELDMENT	2110
7	TRIMMER SHAFT	2124
8	5/8 WASHER	-
9	HEAD PULLEY	2049
10	5/8 NYLOC NUT	-
11	COMPRESSION SPRING	2033
12	SLIDE WELDMENT	2107
13	HANDLE ASSEMBLY	2080
14	U-BOLT	2075
15	PIVOT HANDLE	2103
16	KNOB	2079
*	STANDARD HARDWARE	-
*	ITEM NOT SHOWN OR NOTED	

SWISHER

OWNER'S MANUAL

TRIM-N-MOW TRIM-MAX

HOW TO ORDER REPAIR PARTS.

Each trimmer has its own model number. Each engine has its own model number. The model number for the trimmer will be found on the right hand side of the drive belt housing. The model number for the engine will be found on the top of the blower fan housing. All trimmer parts listed herein may be ordered directly from Swisher Mower & Machine Co. Inc. or your nearest Swisher Dealer. All engine parts may be ordered from the nearest dealer of the engine supplied with your trimmer.

WHEN ORDERING PARTS, PLEASE HAVE THE FOLLOWING INFORMATION AVAILABLE:

- * PRODUCT - TRIMMER
- * SERIAL NUMBER - _____
- * MODEL NUMBER - _____
- * ENGINE MODEL NUMBER - _____
TYPE - _____
- * PART NUMBER
- * PART DESCRIPTION

TELEPHONE 1-800-222-8183
FAX - 1-660-747-8650

SWISHER MOWER & MACHINE CO. INC.
1602 Corporate Dr. • P.O. BOX 67
WARRENSBURG, MO 64093

SWISHER

SWISHER MOWER & MACHINE CO. INC.