

NEC

NDA-24248
ISSUE 1
STOCK # 0293789

VisuaLink 128/384

Director Guide

JANUARY, 1999

NEC America, Inc.

LIABILITY DISCLAIMER

NEC America, Inc. reserves the right to change the specifications, functions, or features, at any time, without notice.

NEC America, Inc. has prepared this document for use by its employees and customers. The information contained herein is the property of NEC America, Inc. and shall not be reproduced without prior written approval from NEC America, Inc.

Copyright 1999

NEC America, Inc.

Printed in USA

FCC REQUIREMENTS

NEC America, Inc.
VisuaLink 128/VisuaLink 384

TYPE OF SERVICE

The VisuaLink 128 and the VisuaLink 384 are stand-alone devices that allow multimedia conferencing by transmitting video, audio and data to remote locations over the ISDN Basic Rate interface. The VisuaLink 128 and VisuaLink 384 connect to the ISDN digital network through separately-registered NTI equipment. They provide POTS ports which allow a customer-provided 2500-type telephone access to the digital network.

This equipment complies with Part 68 of the FCC Rules. The equipment label will appear on the rear exterior panel of the unit and will provide the FCC Registration Number, NEC trade name, model number, serial number or date of manufacture and the country of origin.

TELEPHONE COMPANY PROCEDURES

The goal of the telephone company is to provide you with the best service it can. In order to do this, it may occasionally be necessary for them to make changes in their equipment, operations, or procedures. If these changes might affect your service or the operation of your equipment, the telephone company will give you notice, in writing, to allow you to make any changes necessary to maintain uninterrupted service.

If you have any questions about your telephone line, such as how many pieces of equipment you can connect to it, the telephone company will give you notice, in writing, to allow you to make any changes necessary to maintain uninterrupted service.

In certain circumstances, it may be necessary for the telephone company to request from you concerning the equipment which you have connected to your telephone line. Upon request of the telephone company, provide the FCC registration number and the ringer equivalence number (REN) of the equipment which is connected to your line; both of these items are listed on the equipment label. The sum of all of the REN's on your telephone lines should be less than five in order to assure proper service from the telephone company. In some cases, a sum of five may not be usable on a given line.

IF PROBLEMS ARISE

If any of your telephone equipment is not operating properly, you should immediately remove it from your telephone lines, as it may cause harm to the telephone network. If the telephone company notes a problem, they may temporarily discontinue service. When practical, they will notify you in advance of this disconnection. If advance notice is not feasible, you will be notified as soon as possible. When you are notified, you will be given the opportunity to correct the problem and informed of your right to file a complaint with the FCC.

In the event repairs are ever needed on your Visualink 128 or VisuaLink 384, they should be performed by NEC America, Inc. or an authorized representative of NEC America, Inc. For information contact:

NEC America, Inc.
1555 W. Walnut Hill Lane
Irving, Texas 75038-3797
USA
972-751-7000

FCC REQUIREMENTS FOR CONNECTION OF TELEPHONE SYSTEMS

In order to connect this system to the telephone network, provide the telephone company with:

- the quantities and USOC numbers of the required jacks (shown below);
- the sequence in which the trunks are to be connected;
- the facility interface codes by position; and
- the ringer equivalence number or service code, as applicable, by position

MFG's Port ID	USOC Jack Connector	REN/Service Code	Facility Interface Code	# CO Ports	# Stations	Registration #
VisuaLink 128	N/A	6.0P	02IS5	1	1	AY5JPN-32617-XD-N
VisuaLink 384	N/A	6.0P	02IS5	3	1	AY5JPN-32617-XD-N

CSA Requirement

To ensure that certified equipment is attached correctly, and only to the networks of participating carriers, the following statement shall accompany each unit of certified equipment offered for sale. This statement must be included conspicuously in written or electronic format, at or near the front of each copy of the operating manual, or accompany other technical information, or be included as a separate sheet. The required statement is:

CP-01, Issue 8, Part I
Section 14.1

NOTICE: The Industry Canada label identifies certified equipment. This certification means that the equipment meets certain telecommunications network protective, operational and safety requirements as prescribed in the appropriate Terminal Equipment Technical Requirements document(s). The Department does not guarantee the equipment will operate to the user's satisfaction.

Before installing this equipment, users should ensure that it is permissible to be connected to the facilities of the local telecommunications company. The equipment must also be installed using an acceptable method of connection. The customer should be aware that compliance with the above conditions may not prevent degradation of service in some situations.

Repairs to certified equipment should be coordinated by a representative designated by the supplier. Any repairs or alterations made by the user to this equipment, or equipment malfunctions, may give the telecommunications company cause to request the user to disconnect the equipment.

Users should ensure for their own protection that the electrical ground connections of the power utility, telephone lines and internal metallic water pipe system, if present, are connected together. This precaution may be particularly important in rural areas.

CAUTION: Users should not attempt to make such connections themselves, but should contact the appropriate electric inspection

MODEL	CERTIFICATE NUMBER	CERTIFICATION NUMBER
VisuaLink 128	19318	140 9004A
VisuaLink 384	19603	140 9104A

Table of Contents

Chapter 1 Introduction and Installation	1-1
1.1: Welcome to VisuaLink Director	1-1
1.2: Hardware Requirements	1-1
1.3: Software Requirements	1-1
1.4: Installing VisuaLink Director	1-2
1.5: Connecting a VisuaLink	1-8
Chapter 2 Starting and Closing the VisuaLink Director	2-1
2.1: Starting VisuaLink Director	2-1
2.2: Password Confirmation	2-1
2.3: Startup Application	2-3
2.4: Exiting VisuaLink Director	2-4
Chapter 3 VisuaLink Director Main Window.....	3-1
Chapter 4 Menu	4-1
4.1: Main Menu.....	4-1
4.2: Connection Menu	4-2
4.3: The Edit Menu	4-4
4.4: Conference Menu.....	4-5
4.5: View Menu.....	4-6
4.6: Maintenance Menu.....	4-7
4.7: Help Menu.....	4-8
Chapter 5 Toolbar/Toolbox	5-1
5.1: Standard Toolbar.....	5-1
5.2: AV Control Toolbar.....	5-3
5.3: Camera Control Toolbox	5-5
Chapter 6 Status bar	6-1
Chapter 7 Connect/Disconnect Line	7-1
7.1: Connect Line (Calling) Direct-dial setting	7-1
7.2: Connect Line (Calling) Redial Setting	7-3
7.3: Connect Line (Calling) Phonebook Setting	7-4
7.4: Connect Line (Receiving)	7-7
7.5: Disconnect Line.....	7-9
Chapter 8 Conference Related Functions	8-1
8.1: Video Control.....	8-1
8.2: Camera Control.....	8-4
8.3: Sending a Snap.....	8-7
8.4: Starting a Data Conference.....	8-8
8.5: Conference Information.....	8-9
Chapter 9 Multi Point Conference	9-1

Chapter 10 Phonebook	10-1
10.1: Registering New Phonebook Information.....	10-1
10.2: Editing Phonebook Information	10-5
10.3: Deleting Phonebook Information	10-7
Chapter 11 Maintenance	11-1
11.1: Environment Setting	11-1
11.2: Changing Your Password	11-10
11.3: Starting a Loopback Test	11-12
11.4: Viewing a Communication History	11-14
Chapter 12 Help	12-1
12.1: Contents and Index	12-1
12.2: About VisuaLink	12-2

List of Figures

Figure 1-1	Start Icon	1-2
Figure 1-2	Setting Menu	1-2
Figure 1-3	Control Panel	1-2
Figure 1-4	Install/Uninstall	1-3
Figure 1-5	Install Program	1-3
Figure 1-6	Run Installation Program	1-4
Figure 1-7	Welcome Screen	1-4
Figure 1-8	Destination Directory	1-5
Figure 1-9	Choose Directory	1-5
Figure 1-10	Select Program Folder	1-6
Figure 1-11	Installation Screen	1-7
Figure 1-12	Next Disk	1-7
Figure 1-13	Setup Completion	1-8
Figure 1-14	Wiring Diagram for VisuaLink 128	1-9
Figure 1-15	Wiring Diagram for VisuaLink 384	1-10
Figure 2-1	Start Icon	2-1
Figure 2-2	NEC Conference System	2-1
Figure 2-3	Confirm Password	2-2
Figure 2-4	Change Password	2-2
Figure 2-5	Confirm Password	2-2
Figure 2-6	Application Startup	2-3
Figure 2-7	Exit VisuaLink Director	2-4
Figure 2-8	Quit Application	2-4
Figure 3-1	Main Window	3-1
Figure 4-1	Main Menu	4-1
Figure 4-2	Connection Menu	4-2
Figure 4-3	Edit Menu	4-4
Figure 4-4	Phonebook Window	4-4
Figure 4-5	Conference Menu	4-5
Figure 4-6	View Menu	4-6
Figure 4-7	Maintenance Menu	4-7
Figure 4-8	Help Menu	4-8
Figure 5-1	Floating Mode	5-1
Figure 5-2	Docking Mode	5-3
Figure 5-3	Camera Control	5-5
Figure 6-1	Status Bar	6-1
Figure 7-1	Dial Menu	7-1

Figure 7-2	Redial Screen	7-3
Figure 7-3	Connection Screen	7-4
Figure 7-4	Phonebook Screen	7-5
Figure 7-5	Manual Receiving Notification	7-7
Figure 7-6	Automatic Receiving Notification	7-8
Figure 7-7	Disconnect Line Menu 1	7-9
Figure 7-8	Disconnect Line Menu 2	7-9
Figure 7-9	Line Disconnection	7-10
Figure 8-1	Conference Video Control Menu	8-1
Figure 8-2	Video Control Screen	8-1
Figure 8-3	Conference Audio Control Menu	8-2
Figure 8-4	Audio Control	8-3
Figure 8-5	Conference Camera Control	8-4
Figure 8-6	Camera Control	8-4
Figure 8-7	Preset Registration	8-5
Figure 8-8	Dropdown List	8-6
Figure 8-9	Conference Send Snap Menu	8-7
Figure 8-10	Snap Screen	8-7
Figure 8-11	Sending Snap Image	8-7
Figure 8-12	View Menu	8-9
Figure 8-13	Conference Information	8-9
Figure 9-1	Multipoint Conference	9-1
Figure 10-1	Edit Phonebook Menu	10-1
Figure 10-2	Phonebook Screen	10-1
Figure 10-3	Detail Information	10-2
Figure 10-4	Edit Phonebook	10-3
Figure 10-5	Insert from Redial	10-4
Figure 10-6	Edit Phonebook	10-4
Figure 10-7	Edit Phonebook Menu	10-5
Figure 10-8	Phonebook (Edit)	10-5
Figure 10-9	Edit Phonebook	10-6
Figure 10-10	Edit Phonebook Menu	10-7
Figure 10-11	Phonebook (Edit)	10-7
Figure 11-1	Maintenance Environment Menu	11-1
Figure 11-2	Environment Setting	11-2
Figure 11-3	Voice Setting	11-3
Figure 11-4	Image Setting	11-4
Figure 11-5	Data Setting	11-5
Figure 11-6	User 1 Setting	11-6
Figure 11-7	User 2 Setting	11-7

Figure 11-8	Line Setting	11-8
Figure 11-9	Serial Setting	11-9
Figure 11-10	Change Password Menu	11-10
Figure 11-11	Change Password	11-10
Figure 11-12	Maintenance Menu	11-12
Figure 11-13	Loopback Test	11-12
Figure 11-14	Maintenance Menu	11-14
Figure 11-15	Communication History	11-15
Figure 12-1	Help Menu	12-1
Figure 12-2	Help Topics Menu	12-1
Figure 12-3	Help Menu	12-2
Figure 12-4	Version Information	12-2

This page is for your notes.

Chapter 1 Introduction and Installation

1.1 Welcome to VisuaLink Director

This Microsoft Windows 95 software allows the desktop or laptop computer to control the VisuaLink 128/384, thereby providing complete control of the videoconference. All functions are provided with easy to use PC screen messages and menus.

Note: The VisuaLink Director software is not include with the package, but can be obtained via the Internet at:
<http://www.cng.nec.com/html/productd.htm>.

1.2 Hardware Requirements

1.2.1 Personal Computer

CPU : Pentium 100Mhz or higher
Memory : 32M byte or more
Hard disk : 100M byte or more available space

1.2.2 High Resolution Display

640x480 series, utilizing 256 colors or more

1.2.3 Other Hardware

To display video:

Desktop Computer	Video Capture Board
Laptop Computer	Video Capture PCMCIA Card

To start a data conference on Lap Top:

Expansion Serial PCMCIA Card

1.3 Software Requirements

1.3.1 Operating System

Windows 95

1.3.2 Other Software

Video Control Application

Attached application software Included with the Video Capture Board (Card)

Data Conference Application

FarSite3.0 (DataBeam) is recommended.

1.3.3 Driver

Video capture board or PCMCIA driver is necessary.

1.4 Installing VisuaLink Director

1.4.1 Start the set up program

Insert the diskette labeled 1 of 2 into the computer's floppy drive. Select **Start** from the task bar



Figure 1-1: Start Icon

Select Setting from the menu and then select Control Panel.

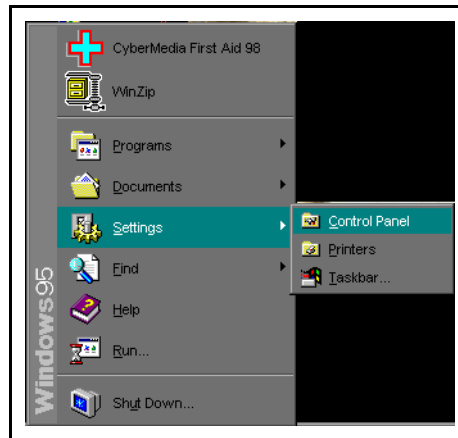


Figure 1-2: Setting Menu

Select **Add/Remove Programs** from the Control Panel.



Figure 1-3: Control Panel

Select the **Install...** button from the Install/Uninstall window.

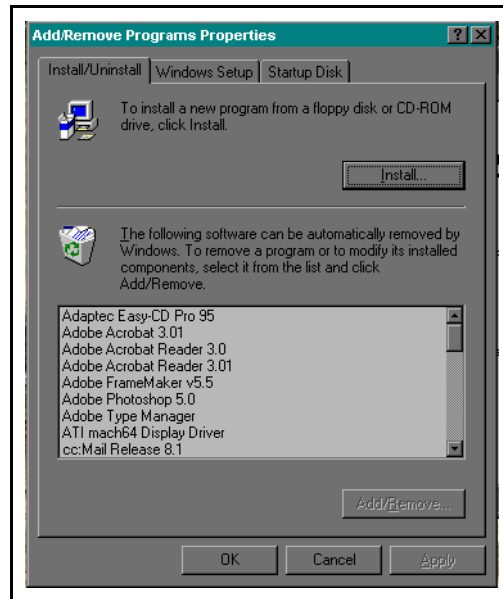


Figure 1-4: Install/Uninstall

Select the **Next>** button from the Install Program screen

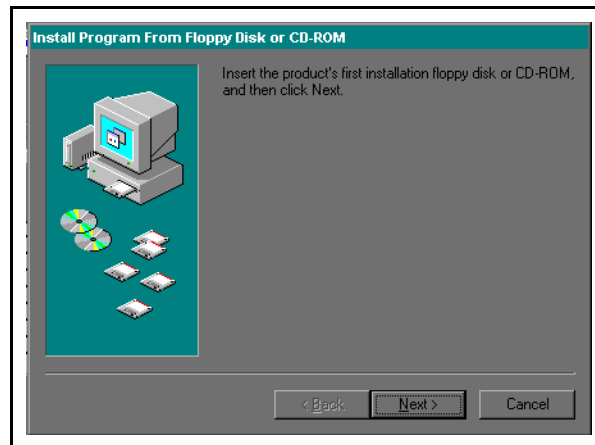


Figure 1-5: Install Program

The **Run Installation Program** screen appears.

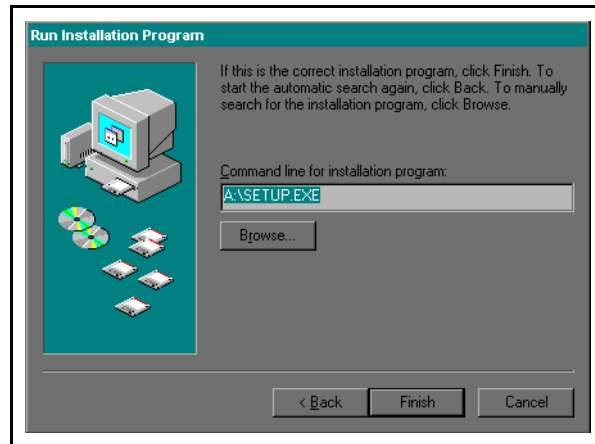


Figure 1-6: Run Installation Program

Make sure that Command line corresponds with your floppy disk drive. Then select the **Finish** button from the Run Installation Program.

1.4.2 Welcome screen

The **Welcome** screen with dialog appears.

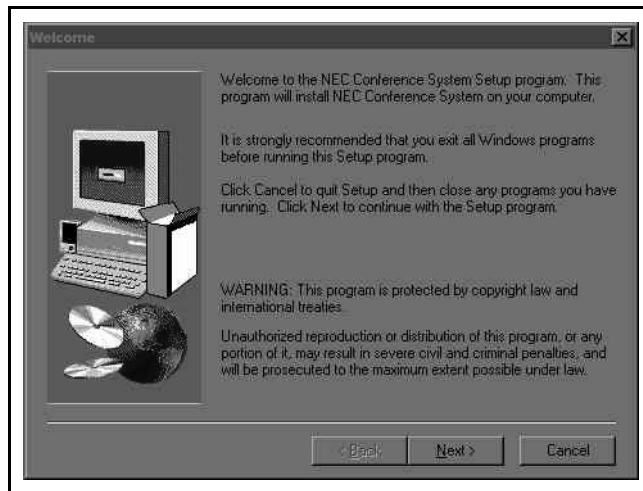


Figure 1-7: Welcome Screen

Carefully read the instruction, then select the **Next>** button.

1.4.3 Destination Directory

The **Destination Directory** displays the destination of the VisuaLink Director software directory.

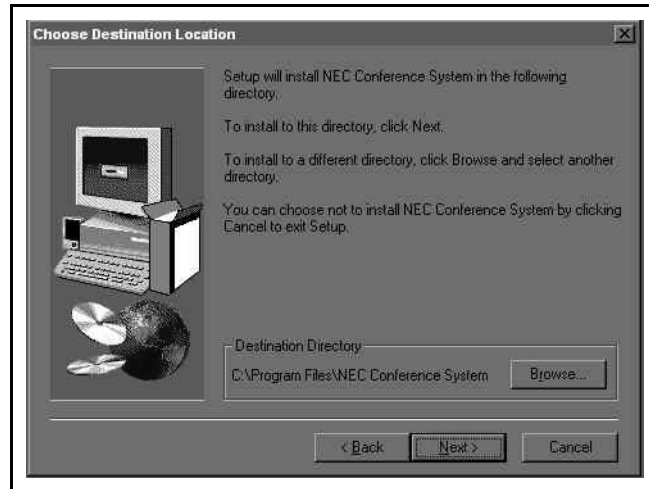


Figure 1-8: Destination Directory

To accept a default destination directory, select the **Next>** button.

To change the destination directory, select the **Browse...** button to select a different directory or to make a new directory.

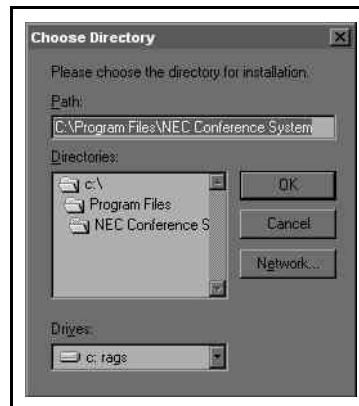


Figure 1-9: Choose Directory

Select the **OK** button when finished.

1.4.4 Program Folder

Select the program folder from this screen. The software will automatically make a software folder called NEC Conference System.



Figure 1-10: Select Program Folder

To accept the default name of program folder, select the **Next>** button.

To change the name of program folder, type a new program folder name. Then, select the **Next>** button.

1.4.5 Start installation

The Installation screen is shows the software’s installation progress.

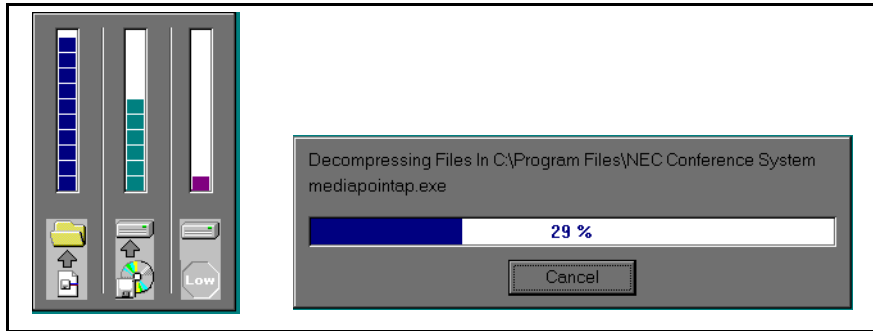


Figure 1-11: Installation Screen

While the file copy procedure, **Next Diskette** dialog appears.

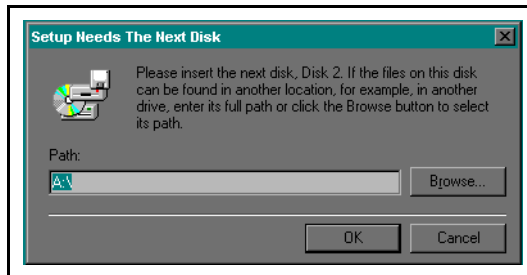


Figure 1-12: Next Disk

Follow the instruction; insert the diskette labeled 2 of 2 into the computer’s floppy drive, then select the **OK** button.

1.4.6 Set up Completion

The **Setup Completion** dialog screen appears when the setup is successfully completed.

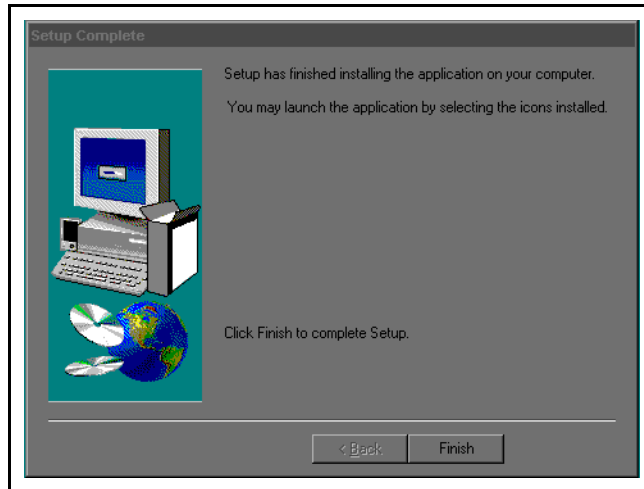


Figure 1-13: Setup Completion

Select the **Finish** button to end the set up program.

1.5 Connecting a VisuaLink

After the program installation, you need to connect the VisuaLink to your PC. Use RS232C cable (sold separately) to connect RS232C input/output port SERIAL2/RMT on VisuaLink with Serial Port COM1 on the PC. See [Figure 1-14](#) and [1-15](#) for the VisuaLink 128/384 layouts of the system cables. See the VisuaLink Quick Installation Guide, Chapter 6 for the setup of the desktop system.

To start a data conference, you need to connect RS232C input/output port SERIAL1 on VisuaLink with Serial Port other than the COM1 on the PC.

It is also necessary to check the Modem from the communication setting of FarSite3.0J, then set Modem1 with below setting values.

Modem Name	: (reserved)
COM Port	: Port other than COM1
Communication Speed	: 38400bps
Flow Control	: Hardware
Stop Bit	: 1
Parity	: None
Dialing Time-out	: 60 sec.

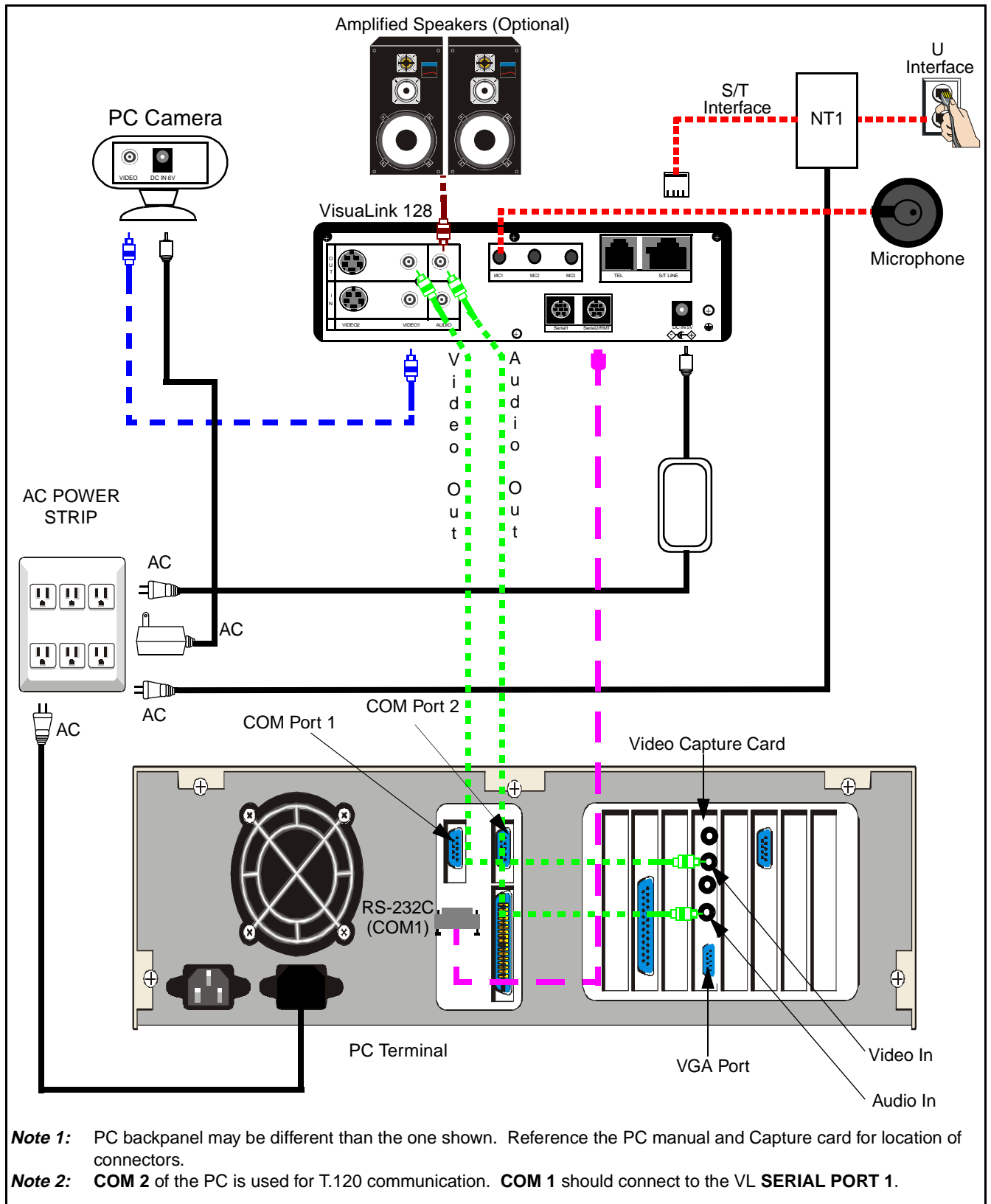


Figure 1-14: Wiring Diagram for VisualLink 128

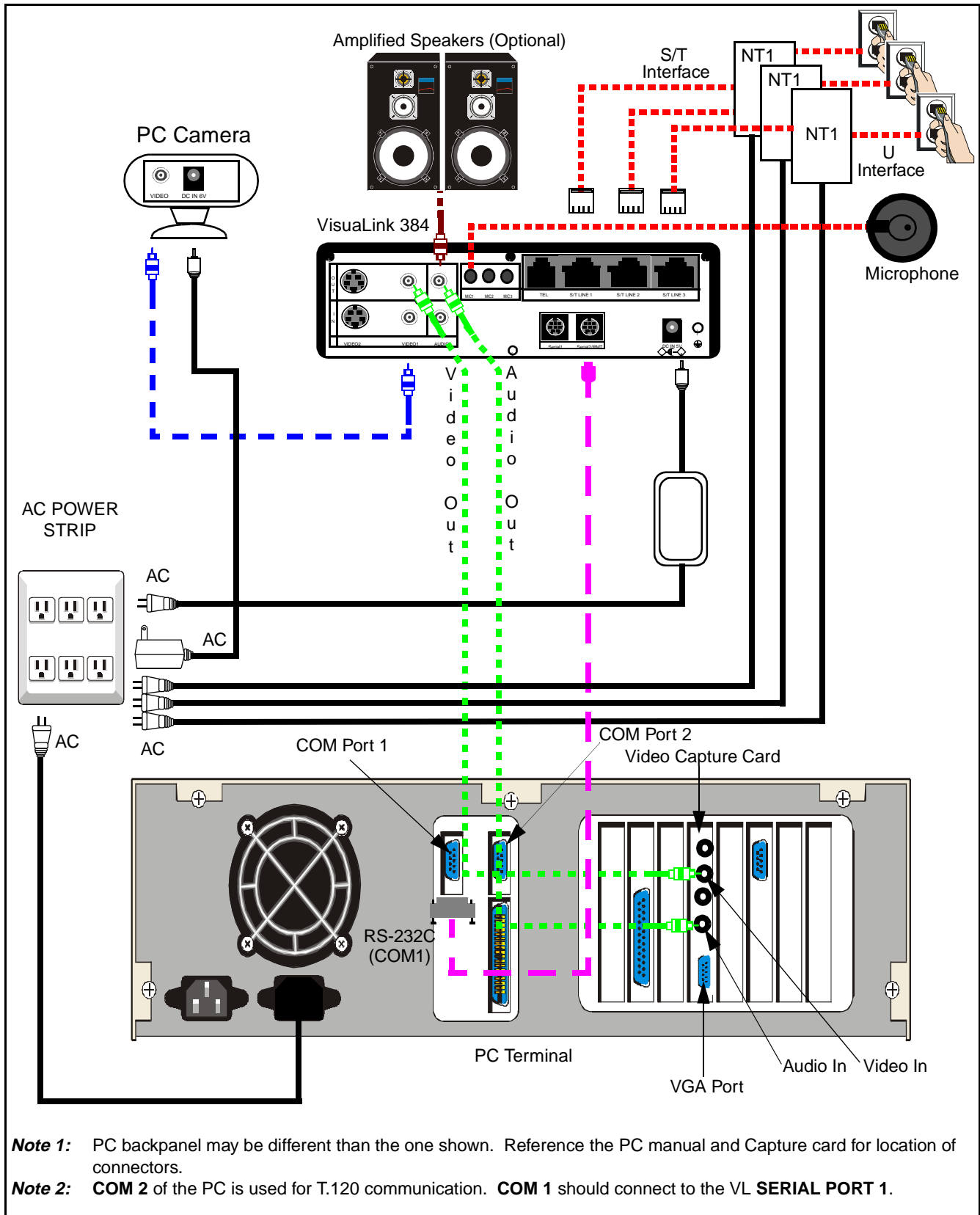


Figure 1-15: Wiring Diagram for VisuaLink 384

Chapter 2 Starting and Closing the VisuaLink Director

2.1 Starting VisuaLink Director Start VisuaLink Director by following the procedure below.

2.2 Password Confirmation When you start VisuaLink Director, the **Password Confirmation** dialog box appears.

Operation
Click **Start** on the task bar.



Figure 2-1: Start Icon

Point to **Program** and then to **NEC Conference System** then click **VisuaLink Director**.

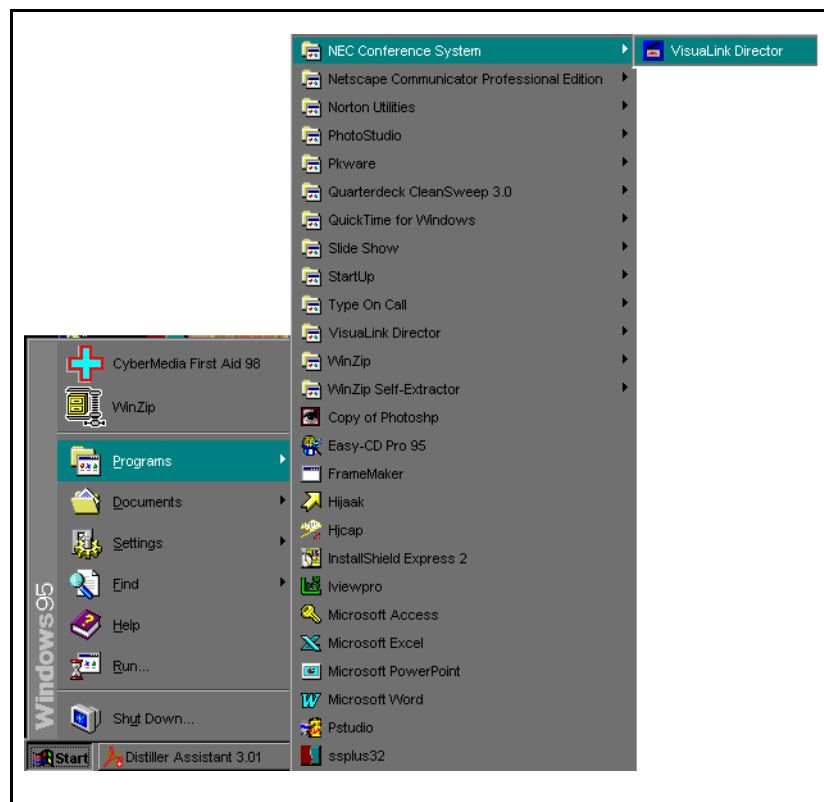


Figure 2-2: NEC Conference System

When **VisuaLink Director** is started, the **Password Confirmation** dialog box appears.



Figure 2-3: Confirm Password

Enter your registered password into the entry field, and click **OK**. When the system accepts the password, the **Startup Application** dialog box will appear. If you enter an incorrect password you will not enter the program. You must reenter a valid password to continue.

Note: When you first begin **VisuaLink Director**, there are no default passwords, so the **Password Confirmation** dialog box will not appear. If you want to assign a password to the system use: **Maintenance/Change Password**. If you want to start without assigning a password, use: **Maintenance | Environment**.

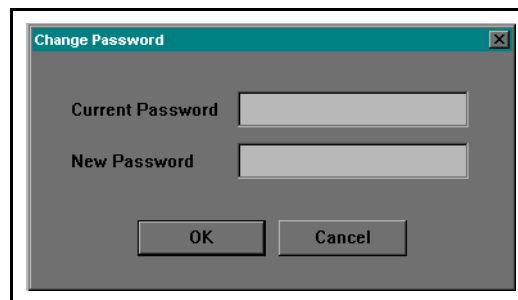


Figure 2-4: Change Password

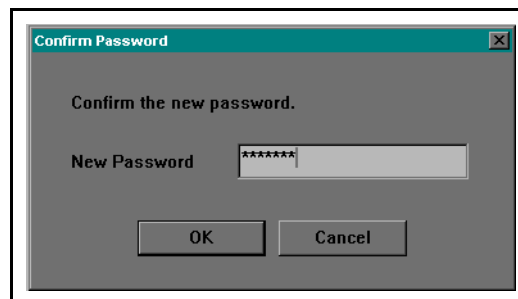


Figure 2-5: Confirm Password

VisuaLink Director will be aborted if you enter an incorrect password three consecutive times. The system will also abort if you click **Cancel** in the **Password Confirmation** dialog box.

2.3 Startup Application

When you activate **VisuaLink Director**, the **Startup Application** dialog box will appear. Use this dialog to select the Video Capture application or the Data Conference application that you want to run simultaneously with **VisuaLink Director**.

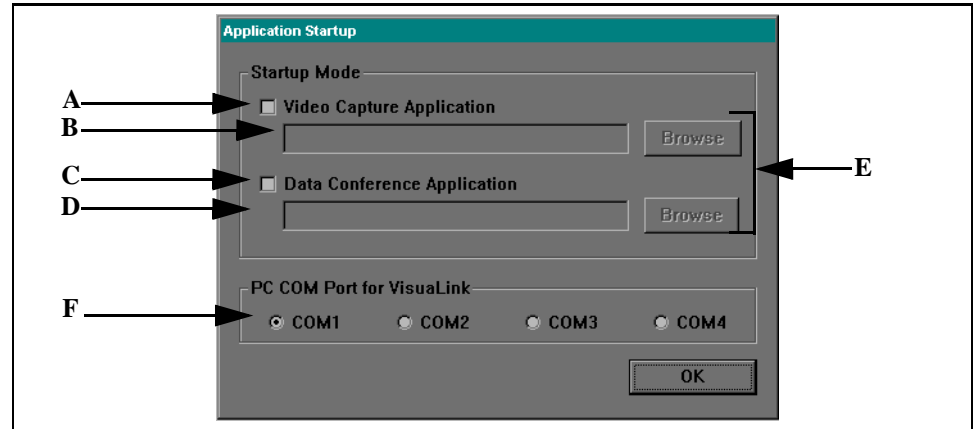


Figure 2-6: Application Startup

Operation

When the **Startup Application** dialog appears, choose the options that you are interested in, from the list below.

A. Video Capture Application

Check this checkbox to start the Video Capture Application on the selected directory. The default setting is unchecked.

B. Video Capture Application Path

You can enter the path of the Video Capture Application.

C. Data Conference Application

Check this checkbox to start the Data Conference Application on the selected directory. The default setting is unchecked.

D. Data Conference Application Path

You can enter the path of the Data Conference Application.

E. [Browse]

Display the select path screen to find and select the Video Capture Application and the Data Conference Application.

F. PC COM Port for VisuaLink

Select the port that the is connected to the VisuaLink.

Check the Video Capture Application/Data Conference Application as necessary, then select the path. Click **OK**. Your selected applications will start.

Note: If the system does not detect the applications from your selected path, you cannot start the application.

Tips: You can start VisuaLink Director without a password confirmation. Select **Maintenance | Environment Setting | Change Password**.

2.4 Exiting VisuaLink Director

You can quit VisuaLink Director by following the operation below.

Operation

Select **Communication | Exit**.

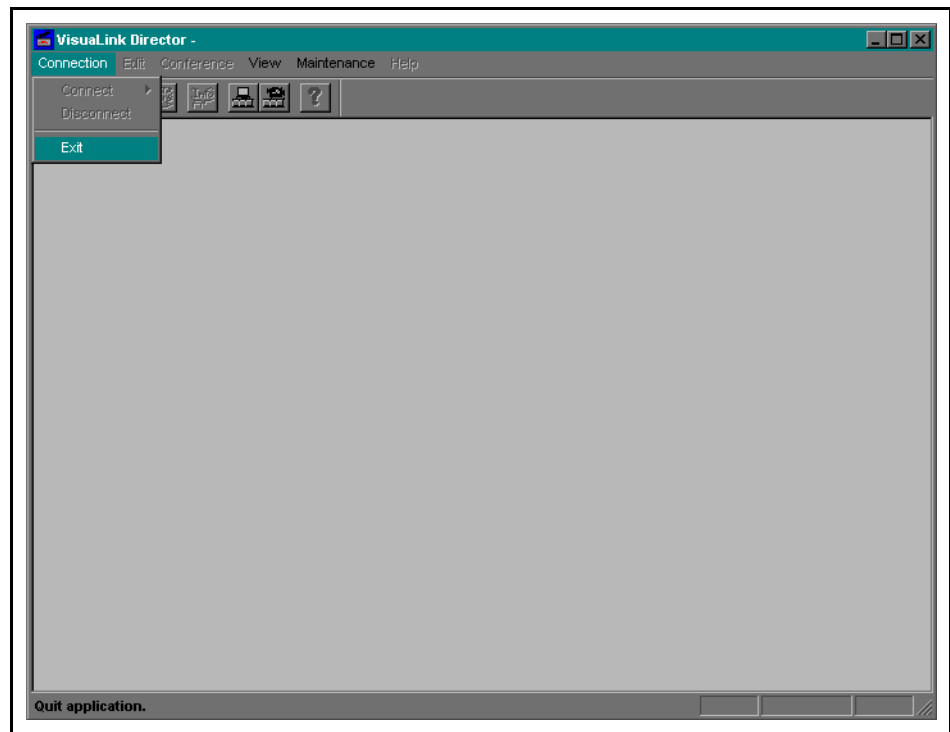


Figure 2-7: Exit VisuaLink Director

The **Quit Application** dialog box appears.

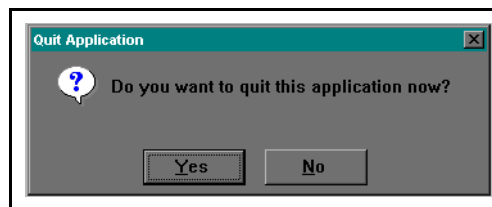


Figure 2-8: Quit Application

To quit **VisuaLink Director** the communication must be disconnected. Click **Yes** button to quit **VisuaLink Director**, and the **Line Disconnection** dialog box appears. Click **No** button to close the **Quit Application** dialog box, and you can continue.

Chapter 3 VisuaLink Director Main Window

The VisuaLink Director main window consists of the features shown below.

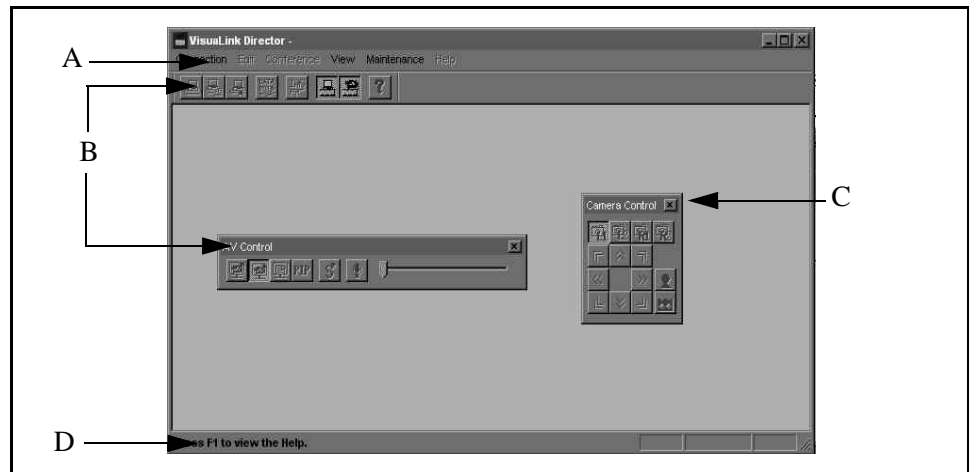


Figure 3-1: Main Window

A. Menu bar

The Menu bar displays the following options: **Communication**, **Edit**, **Conference**, **View**, **Maintenance**, and **Help** menus.

B. AV Control

The toolbar displays frequently used Audio and Video Activation/Deaction functions with icons. The toolbar consists of the PIP, MIC MUTE, Volume Control and Monitor display mode.

C. Camera Control

The tool box displays the options as they relate to controlling a pan/tilt zoom/focus camera.

D. Status bar

The Status bar displays functional descriptions, communication status, and conference information.

This page is for your notes.

Chapter 4 Menu

4.1 Main Menu

The VisuaLink Director main menu consists of the following menus: Communication, Edit, Conference, View, Maintenance, and Help.

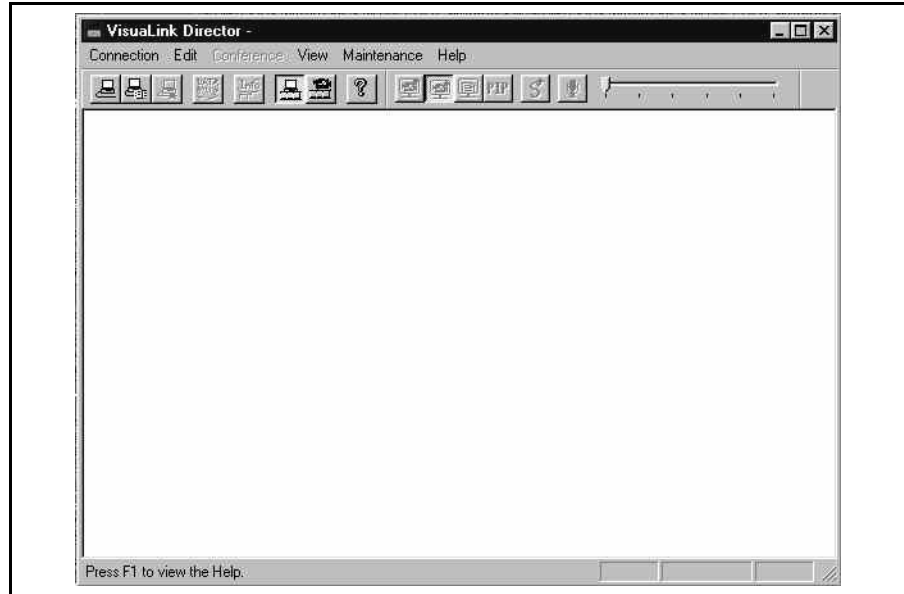


Figure 4-1: Main Menu

- Note 1:* The **Edit** menu is not available with a basic proprietary line.
- Note 2:* The **Conference** menu is not available if a conference is not processing, or if only a telephone is being used.
- Note 3:* You cannot use **Edit**, **Conference**, **Maintenance**, and **Help** menus during VisuaLink Director startup operation.

4.2 Connection Menu

The **Connection** menu provides the functions described below.

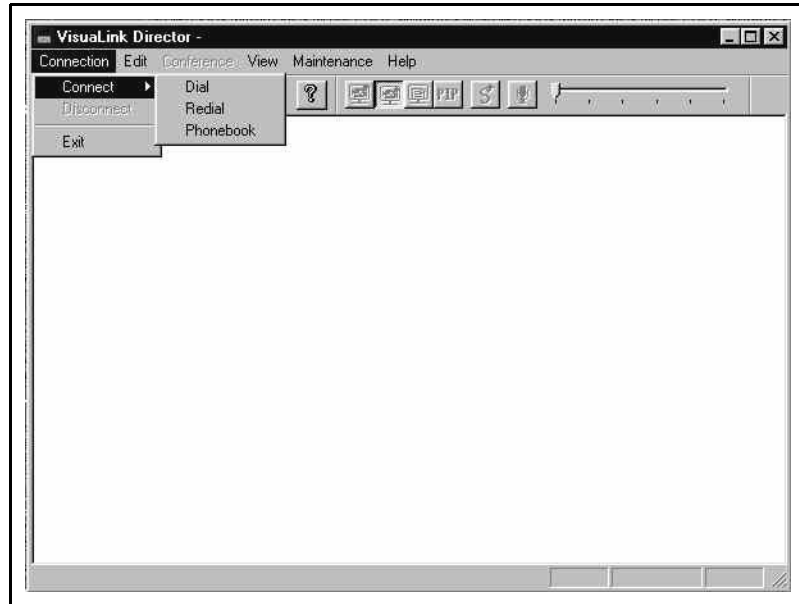


Figure 4-2: Connection Menu

Connect

This function is used to establish a line connection. When you move the pointer over **Connect**, a sub menu appears with the following options: **Dial**, **Redial**, **Phonebook**. There are three ways to connect to a line: **Dial**, **Redial**, and **Phonebook**. These options are described below.

Dial

Click **Dial** to display the **Dial** dialog box. You can select a phone number from the dialog box, and to connect the line.

Redial

Click **Redial** to display the **Redial** dialog box. Use the **call/receive history information** to connect the line.

Phonebook

Click **Phonebook** to display the **Phonebook** dialog box. Use the phonebook information to connect the line.

Disconnect

Click **Disconnect** to display the **Disconnect Line** dialog box. You can disconnect the line from this dialog.

Exit

Click **Exit** to display the **Quit Application** dialog box, and close the VisuaLink Director.

Note 1: **Connect** and **Disconnect** are not available when you are using the basic proprietary line.

Note 2: **Redial** is not available when there is no call/receive history.

Note 3: **Phonebook** is not available when there are no registered phone numbers.

4.3 The Edit Menu

The **Edit** menu provides the options described below.

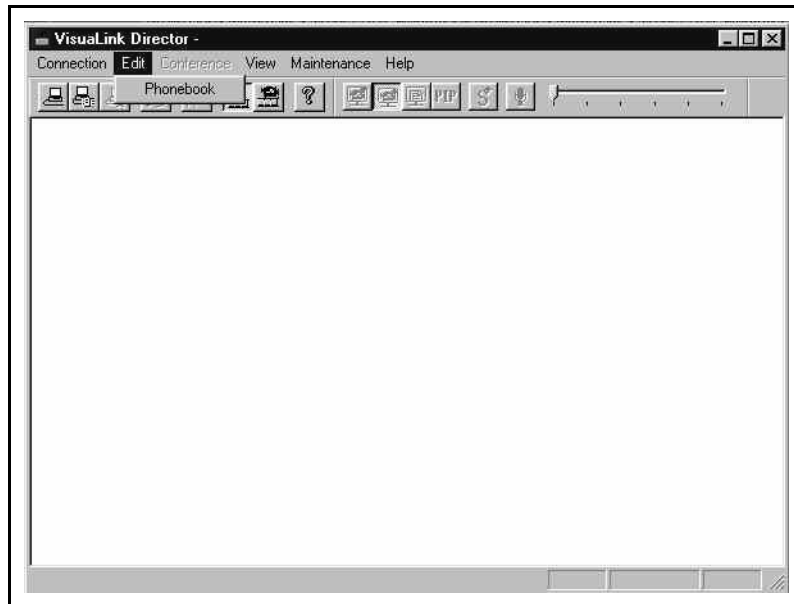


Figure 4-3: Edit Menu

Phonebook

Click **Phonebook** to display the **Phonebook** dialog box. You can edit the phonebook from this dialog.

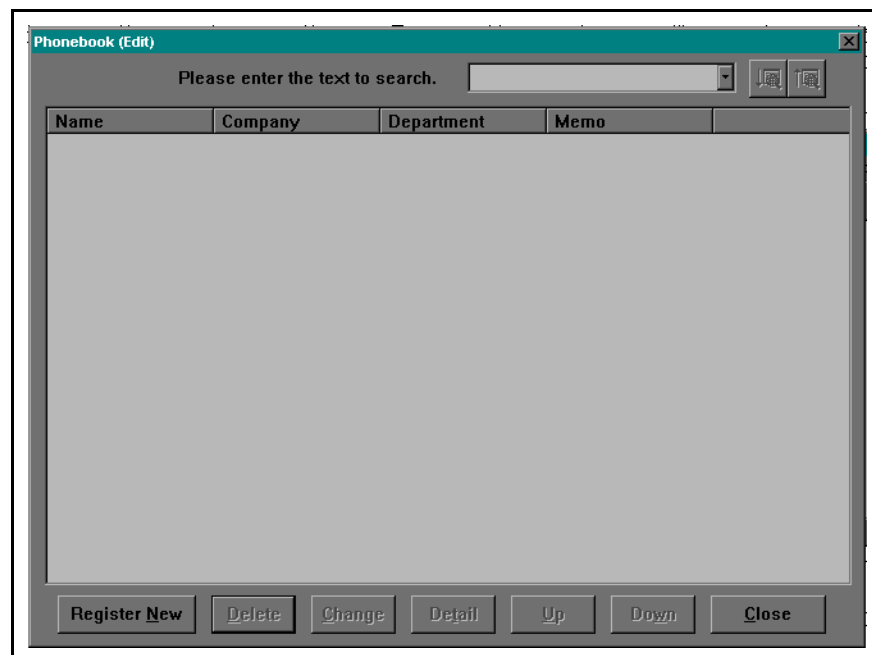


Figure 4-4: Phonebook Window

4.4 Conference Menu The **Conference** menu provides the options described below.

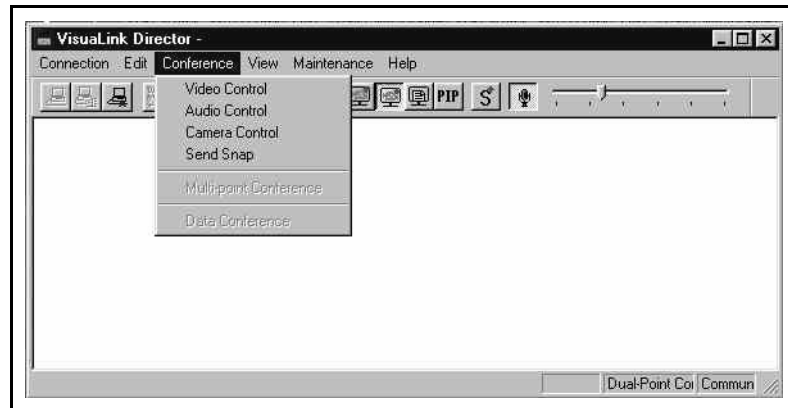


Figure 4-5: Conference Menu

Video Control

Click **Video Control** to display the **Video Control** dialog box. You can switch the video input and output monitor from this dialog box.

Audio Control

Click **Audio Control** to display the **Audio Control** dialog box. You can adjust the volume and switch the microphone ON/OFF from this dialog box.

Camera Control

Click **Camera Control** to display the **Camera Control** dialog box. You can control the local and remote camera from this dialog box.

Snap

Click **Snap** to display the **Snap** dialog box. You can send a **Snap Shot** or single image from this dialog box.

Multi-Point Conference

Click **Multi-Point Conference** to display the **Multi-Point Conference** dialog box. You can select the conference mode and control the chairmanship.

Data Conference

Click **Data Conference** to initiate the data conference application and start the data conference.

Note 1: You need to be a chairman to use **Snap** during the Multi-Point conference.

Note 2: You can use **Camera Control** when Camera is selected on **Maintenance/Environment/Serial Port 1**. T.120 will not function when camera is activated.

Note 3: You can use **Data Conference** when T.120 is selected on **Maintenance/Environment/Serial Port 1**. Camera control will not function when T.120 is activated.

Note 4: **Data Conference** is not available if one of the participants does not use the Data Conference function. In order for T.120 (Data Conference) to function, all sites must be activated.

4.5 View Menu

The **View** menu provides the options described below.

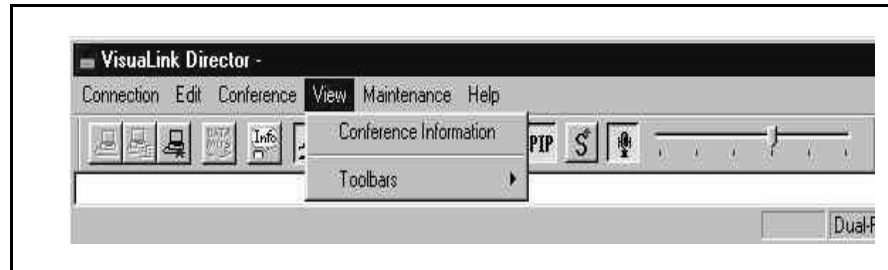


Figure 4-6: View Menu

Conference Information

Click **Conference Information** to display the **Conference Information** dialog box. You can see the current conference information.

Toolbars

This function is to control the toolbar/tool box display. When you point [Toolbars ►] with the cursor, a cascade menu appears. A Check mark indicates display/hide status of the toolbar/toolbox.

Standard

Click **Standard** to switch the display/hide status of the standard toolbar.

AV Control

Click **AV Control** to switch the display/hide status of the AV Control toolbar.

Camera Control

Click **Camera Control** to switch the display/hide status of the Camera Control toolbox.

4.6 Maintenance Menu

The **Maintenance** menu provides the options described below.

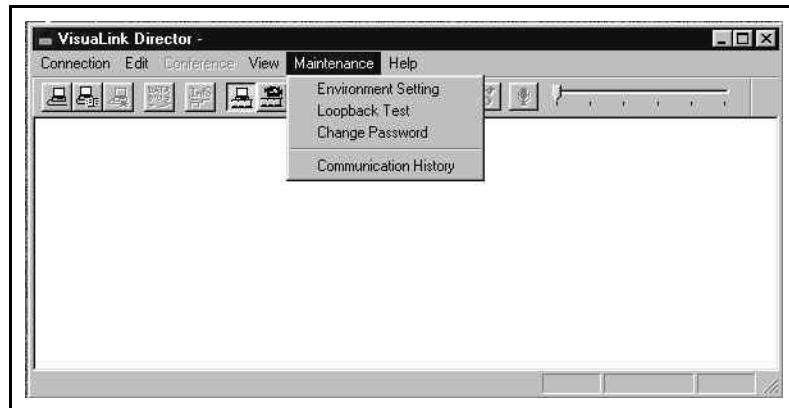


Figure 4-7: Maintenance Menu

Environment Setting

Click **Environment Setting** to display **Environment Setting** dialog box. You can view the current conference information.

Loopback Test

Click **Loopback Test** to display **Loopback Test** dialog box. You can start the Local and Remote Loopback Test from this dialog box.

Change Password

Click **Change Password** to display **Change Password** dialog box. You can change the user password from this dialog box.

Communication History

Click **Communication History** to display **Communication History** dialog box. You can view the call request/receive report/disconnection report history from this dialog box.

Note 1: **Environment Setting** is not available during the conference.

Note 2: **Communication History** is not available during the conference when you are using basic proprietary line.

4.7 Help Menu

The **Help** menu provides the options described below.

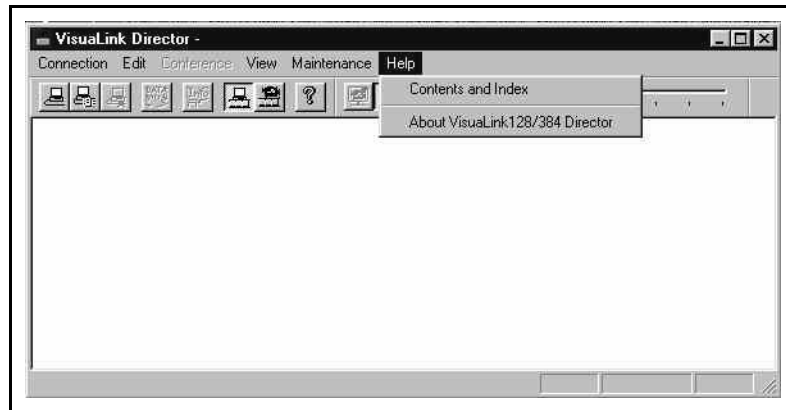


Figure 4-8: Help Menu

Contents and Index

Click **Contents and Index** to display **Contents and Index** dialog box. You can search the contents of topic that you want to know.

About VisuaLink Director

Click **About VisuaLink Director** to display **About VisuaLink Director** dialog box. You can view the version information and copyright of VisuaLink Director from this dialog box.

Chapter 5 Toolbar/Toolbox

The Toolbar/Toolbox option provides icons for the most frequently used commands. The VisuaLink Director provides three types of toolbar/toolbox options: Standard toolbar, AV control toolbar, and Camera control toolbox. You can display the tool tips and status bar functional descriptions when the pointer pauses on an icon.

Tips: If you make a change on **Screen Property | Appearance** tab, select scrollbar on the [Item] field to confirm the size is 16. You need to reset the scrollbar size if it is not 16.

5.1 Standard Toolbar

You can dock the standard toolbar to the edge of VisuaLink Director main window frame (horizontally/vertically) or click and drag as a floating toolbar.

The Standard Toolbar provides the following icons.

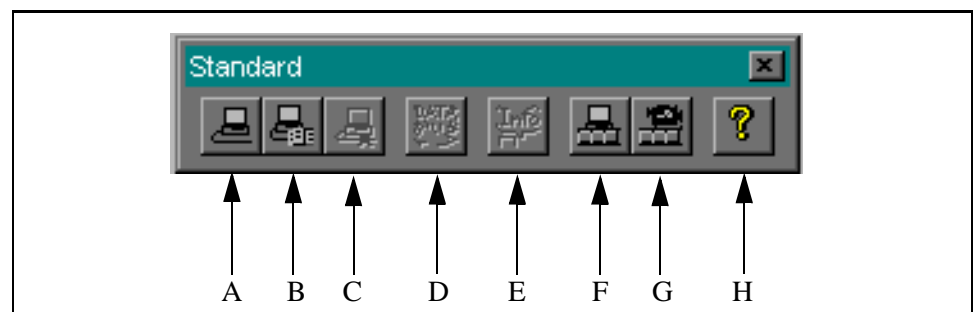


Figure 5-1: Floating Mode

A. Connect Line (Dial)

Click Connect Line (Dial) to display **Dial** dialog. You can select the phone number to connect the line.

B. Connect Line (Phonebook)

Click **Connect Line (Phonebook)** to display **Phonebook (calling)** dialog. You can use phonebook information to connect the line.

C. Disconnect Line

Click **Disconnect Line** to display **Disconnect Line** dialog. You can disconnect the line from this dialog.

D. Data Conference

Click **Data Conference** to initiate the data conference application and start the data conference.

E. Conference Information

Click **Conference Information** to display **Conference Information** dialog. You can view the current conference information.

F. AV Control Toolbar

Click **AV Control** to switch the display/hide status of AV Control toolbar.

G. Camera Control Toolbox

Click **Camera Control** to switch the display/hide status of Camera Control toolbox.

H. Help

Click **HELP** to display **Contents and Index** dialog. You can search the contents of topic that you want to know.

5.2 AV Control Toolbar

You can dock the AV Control toolbar to the edge of VisuaLink Director main window frame (horizontally/vertically) or click and drag as a floating toolbar.

The Standard Toolbar provides the following icons.

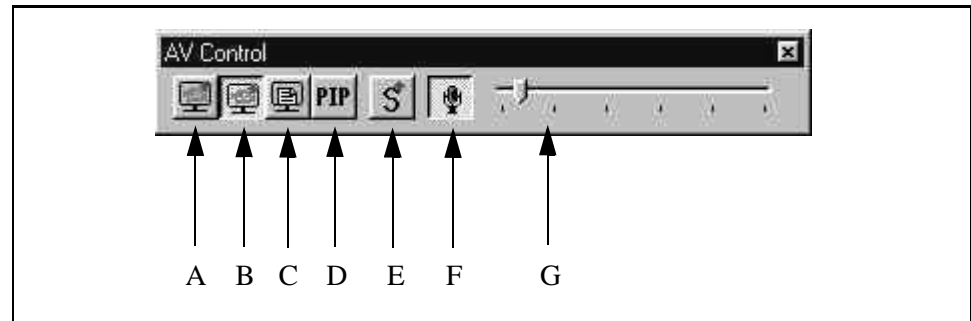


Figure 5-2: Docking Mode

A. Sending Image

Local monitor displays the image being transmitted.

B. Receiving Image

Local monitor displays the far end transmitted image.

C. Snap Image

Local monitor displays the last sent/received still graphics (snapshot).

Note: **Sending Image**, **Receiving Image**, and **Snap Image** are the monitor switch icons. The icon that is activated (pushed in), will be the image displayed on the monitor.

D. Picture-In-Picture (PIP)

Click this PIP to display a PIP on the local monitor. The image shown in the PIP is normally the image transmitted.

E. Send Snap

Click **Send Snap** to send a snap from an image from the currently selected video input line.

F. Microphone

Click this microphone icon to mute or unmute the local microphone. When the microphone is muted a line is placed through the microphone on the display.

Note: This icon appears only when the AV Control Toolbar is vertical.

G. Receiving Volume

Click and drag the arrow of this track bar to adjust the volume. Move the arrow to the right to increase the volume and to the left to decrease.

Note 1: This track bar appears only when the AV Control Toolbar is horizontal. It is necessary to deselect the volume control to activate the new setting.

Note 2: AV Control Toolbar is available during the conference.

Note 3: You need to be a chairman to use the [Send Snap] in a Multi-Point conference.

5.3 Camera Control Toolbox

The Camera Control Toolbox appears with floating toolbox. The Camera Control Toolbox provides the following icons and control buttons.

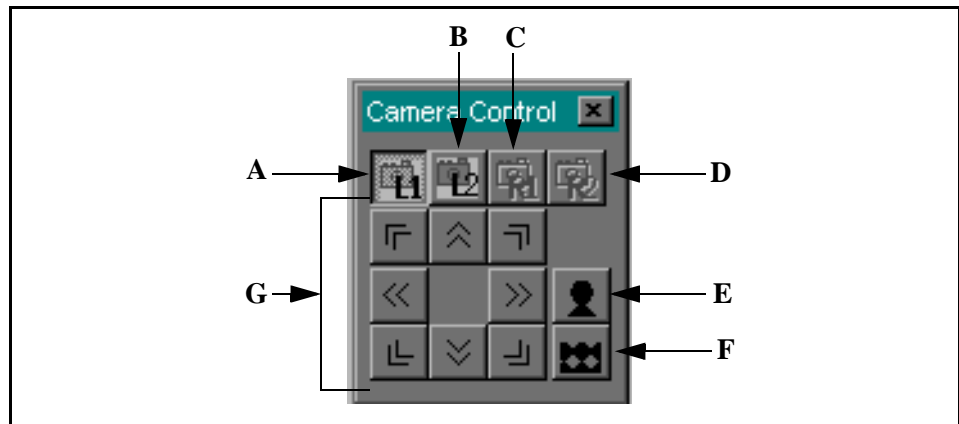


Figure 5-3: Camera Control

A. Local Camera 1

Activates local control for **CAMERA 1** (Main Camera).

B. Local Camera 2

Activates local control for **CAMERA 2** (Sub Camera.)

C. Remote Camera 1

Activates remote control for **CAMERA 1** (Main Camera).

D. Remote Camera 2

Activates remote control for **CAMERA 2** (Sub Camera).

Note 1: **Local Camera 1, Local Camera 2, Remote Camera 1, and Remote Camera 2** are camera switch icons. Click one of the icons to select the camera that you wish to control.

Note 2: Remote 1 and Remote 2 activation will only work with those remote systems that support H.281/H.224 or NEC camera control.

E. Camera Movement

Camera Movement consists of 8 icons: Up/Down/Left/Right/Upper Right/Upper Left/Lower Right/Lower Left. The movement starts when you hold the icon (with left mouse button). To stop the movement, release the icon (from left mouse button).

F. Zoom In

G. Zoom Out

Zoom In and **Zoom Out** are camera zooming icons. Selected zooming starts when you hold the icon (left mouse button). To stop zooming, release the icon (left mouse button).

Note 1: Camera Control Toolbox is available during the conference. You can use the Camera Control Toolbox when camera is selected on **Maintenance/Environment/Serial Port 1**.

Note 2: In order to manipulate [Remote Camera 1] and [Remote Camera 2] during the Multi-point conference, the chairman mode must be activated. Remote camera control will only work if the remote system (MCU included) support H.281/H.224 or NEC camera control.

Chapter 6 Status bar

The Status bar appears on the lower edge of the VisuaLink Director main window. The Status bar displays information shown below.

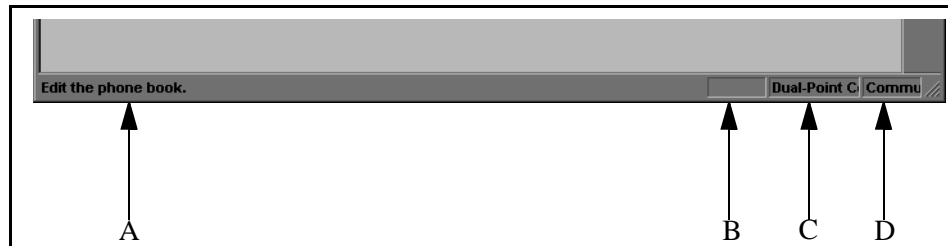


Figure 6-1: Status Bar

A. Functional Description

Displays a brief description of the menu or toolbar/toolbox icon. This display appears when a pointer is placed over the menu or toolbar/toolbox.

B. MCU Sending Status

Displays **SENDING** when local terminal is sending image to participants of Multi-Point Conference. This section only displays **SENDING** status of local terminal.

C. Conference Connection Status

Displays the Remote terminal name. No status appears when the conference is not in process. First 8 letters of participant will appear. Display will vary depending on the conference type (Dual-point/Multi-point).

Dual-Point Conference

Displays the name of connected terminal. **DUAL-POINT CONFERENCE** will appear if there is no registered name. This message will be displayed when the local terminal has connected in a point-to-point connection.

Multi-Point Conference

Displays the name of monitoring terminal (receiving image). **MULTI-POINT CONFERENCE** will appear if there is no registered name. This message will be displayed when the local terminal has connected through a MCU.

D. Communication status

Displays the communication status of local terminal.

- Connecting** : Negotiating with the remote terminal.
- Calling** : Calling remote terminal.
- Receiving** : Receiving a call.
- Communicating** : Conference is established.
- Disconnecting** : Requesting to disconnect.
- No Display** : No connection.

Chapter 7 Connect/Disconnect Line

This chapter describes the fundamentals of connecting the line (calling/receiving) and disconnecting the line when you wish to terminate the conference.

If you use the basic proprietary line that provides line establishment at any time, you may skip ahead to the operations described in this chapter.

7.1 Connect Line (Calling) Direct-dial setting

Follow the operation below to connect the line by dialing the participant directly.

Operation

Click **Connect Line (Dial)** to display **Dial** dialog from the **Standard Toolbar**. Or select **Connection | Connect ► | Dial** from the **Main Menu**.

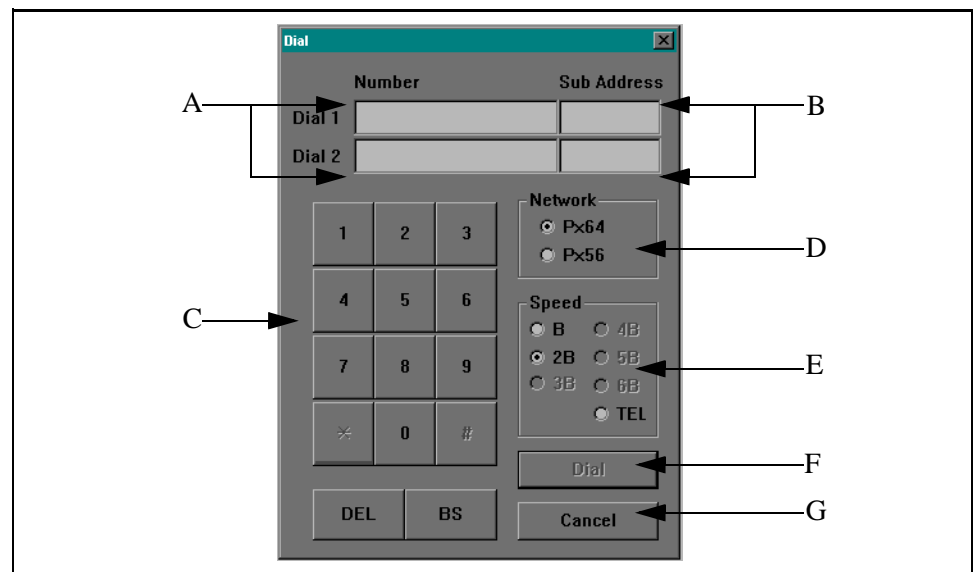


Figure 7-1: Dial Menu

A. Dial 1/Dial 2

Enter remote Dial 1/Dial 2 number into each entry field. You can use dial keys or keyboard to enter numbers up to 20 digit. Dial 2 entry is not available unless select [2B] on the communication speed.

Speed	Phone Numbers Needed to be Entered
TEL, 56, 64	1
172, 128	2 (VL128, 2 or 1 (VL384))
168, 192, 224, 256, 336, 384	1 (VL384)

B. Dial 1 Sub Address/Dial 2 Sub Address

Enter remote Dial 1 sub address /Dial 2 sub address into each entry field. You can use dial keys or keyboard to enter address up to 8 digit. Dial 2 sub address entry is not available unless select [2B] on the communication speed.

C. Dial Key

[0] ~ [9]: Use these keys for Dial 1, Dial 1 sub address, Dial 2, and Dial 2 sub address entry.

[*] [#] : Not available

[DEL] : Use this key to delete a letter on the left of cursor or highlighted letters on Dial 1, Dial 1 sub address, Dial 2, and Dial 2 sub address entry fields.

[BS] : Use this key to delete a letter on the right of cursor or highlighted letters on Dial 1, Dial 1 sub address, Dial 2, and Dial 2 sub address entry fields.

D. Network

Select [Px64] or [Px56]. This item is not available when you select [TEL] for the communication speed.

E. Communication Speed

Select [B], [2B], or [TEL].for VisuaLink 128, select any displayed speeds for VisuaLink 384.

H. Dial button

Use this button to place the call after inputting numbers.

G. Cancel button

Use this button to close **Dial** dialog and quit the dial dialog.

Note: Set **Dial 1/Dial 2, Network, and Communication Speed** then click **Dial**. Call request will start by using selected list contents and close **Redial** dialog.

Tip: On the status bar, **Communicating** appears on the communication status display area after the communication is established.

7.2 Connect Line (Calling) Redial Setting

You can connect the line by selecting a participant from previous call/receive history (redial). Follow the operation below to initiate the redial.

Operation

Select **Connection | Connect ► | Redial** from the **Main Menu**.

Redial dialog appears.

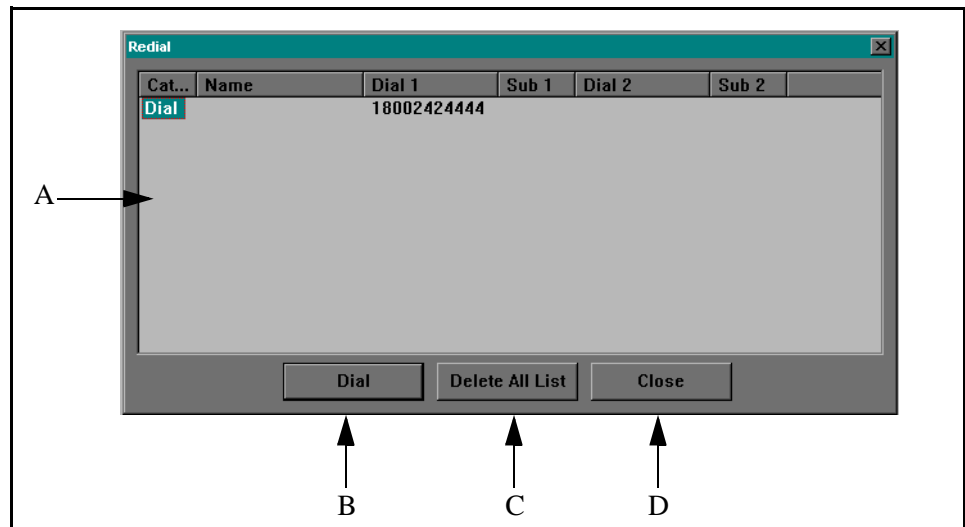


Figure 7-2: Redial Screen

A. Redial List

Redial List (call/receive history) can retain up to 10 redial numbers.

Redial List displays calls in the order placed/received (the latest to older). When you initiate a call, the caller information will appear on top of the Redial List.

- Category: Displays information about who called who. If the call was incoming a message **INCOMING** is displayed. If the call was placed by the local site **DIAL** is displayed.
- Name: The name for this particular site is displayed.
- Dial1: The associated number for the remote site.
- Sub1: The sub address number for the remote site.
- Dial2: The associated number for the remote site. This number will only appear if a 2x number (112 or 128kbps) was placed or received.
- Sub2: The sub address for the remote site. This number will only appear if a 2x number (112 or 128kbps) was placed or received.

B. Dial button

Dials the remote site. Highlight one of the redial number and click dial. A call request will be set.

C. Delete All List button

When you click this button, a dialog appears to confirm the deletion of all the Redial Numbers. Accept to delete all the contents of the Redial list, cancel to return back.

D. Close button

Closes **Redial** dialog box.

Note 1: Selecting the receive information from Redial List will disable the Dial 2 and Dial 2 Sub Address information, otherwise only the Dial 1 and Dial 1 Sub Address information are available. System will change the communication speed to 2B and network type to P x 64.

Note 2: If no dial information is provided by remote terminal during negotiation, Redial List does not register this call as the history information.

Tip: Double click a Redial number to start a call.

Note 3: **COMMUNICATING** will appear in the communication status area, on the status bar, when system establishes the communication with the remote end.

**7.3 Connect Line
(Calling)
Phonebook Setting**

You can connect the line by select a participant from the Phonebook. Follow the operation below to use the Phonebook.

Operation

Click **Connect (Phonebook)** icon on the **Standard Toolbar**. Or select **Connection | Connect ► | Phonebook** from the **Main Menu**.

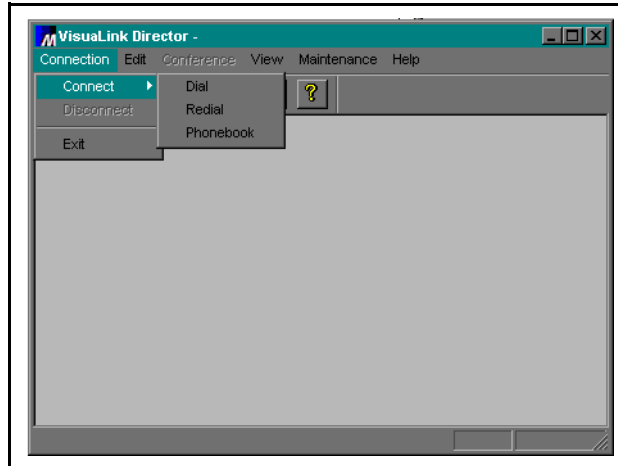


Figure 7-3: Connection Screen

Phonebook dialog appears.

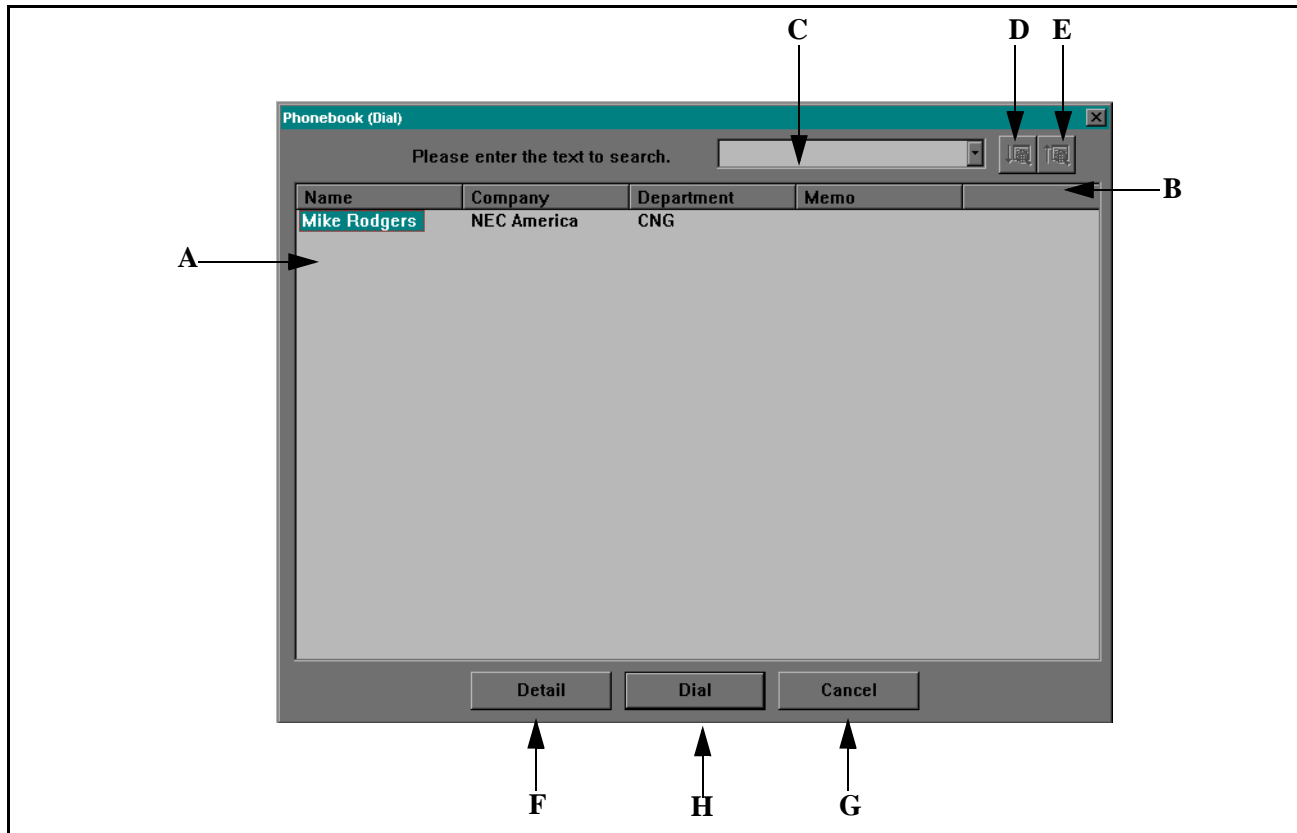


Figure 7-4: Phonebook Screen

A. Phone List

Phone List can retain up to 130 call profiles. Displays the call profiles in the order of registrations.

B. Headers

Call profile headers are buttons. Click any field name button to sort the items based on the selection.

C. Search

Search through the Phonebook to find a match. Search history shows a log of the last 16 previous items in a drop down menu.

D. Search Down

After you specify the search text or highlight one item from the list, click **Search Down** button to start searching the texts from the highlighted item to the bottom of the list. Matched texts will be highlighted. If there is no match texts, no message will appear.

E. Search Up

After you specify the search text or highlight one item on the list, click **Search Up** button to start searching the texts from the highlighted item to the top of the list. Matched text will be highlighted. If there are no matches, no message will appear.

F. Detail

Click the **Detail** button to display more caller information on the selected item. Click **Close** to close the **Detail** dialog and revert to **Phonebook (Calling)** dialog.

G. Cancel button

Close the **Phonebook (Calling)** dialog.

H. Dial button

After selecting one of the item from the list, click **Dial** button. The call request will start based on the selected list contents, then the **Phonebook (Calling)** dialog will be closed.

Tip: You can also double click a call profile from the Phonebook List to initiate a call.

COMMUNICATING appears in the communication status area when the communication is established.

7.4 Connect Line (Receiving)

There are three (3) different modes the VisuaLink can be set to when receiving a call.

- Manual Receiving
- Auto Receiving
- Select Receiving

7.4.1 Manual Receiving

The Manual Receiving Mode allows the user to accept or deny the incoming call.

Operation

Receiving Notification dialog will appear when you receive an incoming call is received.

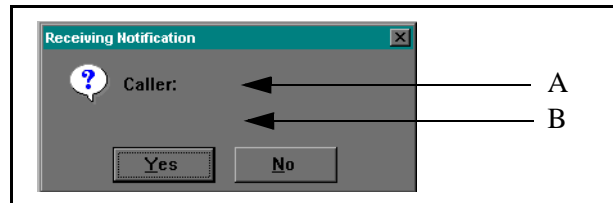


Figure 7-5: Manual Receiving Notification

A. Phone Number

Displays the remote site's dial number. Only one number will appear on the screen.

B. Name

If the incoming call is registered in the **Phonebook**, the associated name will appear

To accept the call, click **Yes (Y)**. The system closes the **Receiving Notification** dialog, and negotiation will occur. After negotiation the two systems will be connected.

To deny the call, click **No (N)**. The system will close the **Receiving Notification** dialog, the incoming call is aborted.

Note: If there is no response within 50 seconds on the manual receiving, the system will automatically abort the incoming call.

7.4.2 Auto Receiving and Select Receiving

Auto Receiving mode allows all incoming calls to be automatically answered. Select Receiving mode will accept automatically those callers that are entered in the **Phonebook**. All other incoming calls are aborted.

Operation

Receiving Notification dialog appears when you receive a incoming call.

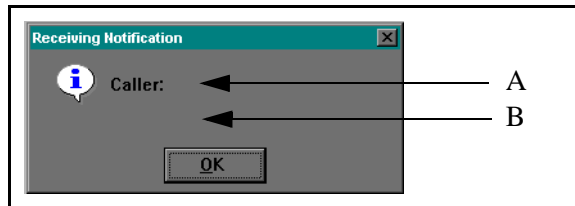


Figure 7-6: Automatic Receiving Notification

A. Phone Number

Displays the remote site dial number, only one number will appear on the screen.

B. Name

If the incoming call is registered in the **Phonebook**, the associated name will appear.

Click **OK (O)** button to close **Receiving Notification** dialog.

7.5 Disconnect Line

To stop a conference, you need to disconnect the line. The system will forcibly stop the conference if participant disconnects the line. When a data conference takes place, you can withdraw from the conference by disconnecting the line.

7.5.1 Line Disconnect Request

The local site will hang up with the remote site

Click **Disconnect Line** icon on the **Standard Toolbar**.

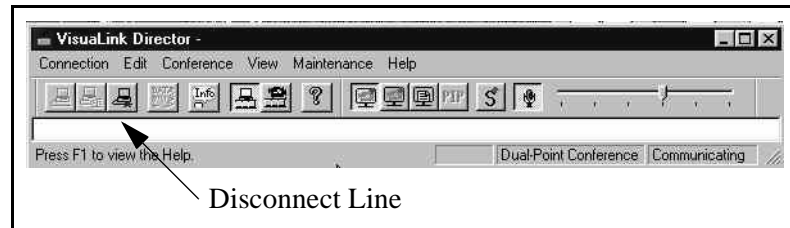


Figure 7-7: Disconnect Line Icon

Or select **Connection | Disconnect** from the **Main Menu**.

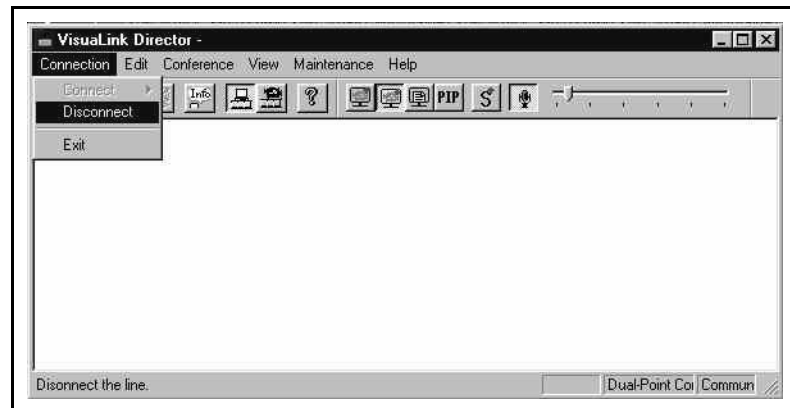


Figure 7-8: Disconnect Line Menu 1

Disconnect Line dialog appears.

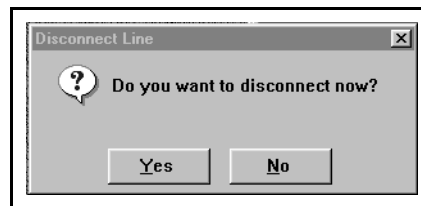


Figure 7-9: Disconnect Line Menu 2

To accept the line disconnection, click **Yes (Y)**. This will send a disconnect request and closes **Disconnect Line** dialog.

To deny the line disconnection, click **No (N)** and close **Disconnect Line** dialog.

7.5.2 Line Disconnection

Line Disconnection dialog appears when the line disconnection occurs. **Line Disconnection** dialog contains communication time, charge, and cause of disconnection.

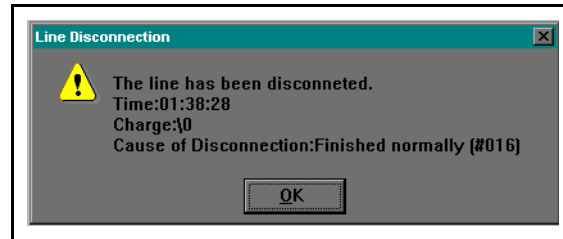


Figure 7-10: Line Disconnection

Click **OK (O)** button to close **Line Disconnection** dialog.

When **Line Disconnection** dialog appears, the system will automatically abort the conference.

This page is for your notes.

Chapter 8 Conference Related Functions

8.1 Video Control

This sets the setting for PIP position, the display output image and image to be transmitted to the far end.

8.1.1 Video Control

Operation

Select **Conference | Video Control** from the **Main Menu**.

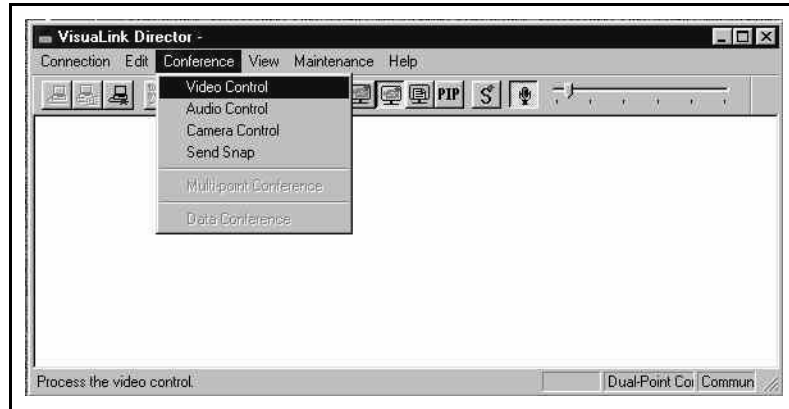


Figure 8-1: Conference | Video Control Menu

Video Control dialog appears.

This dialog displays the current setting values.

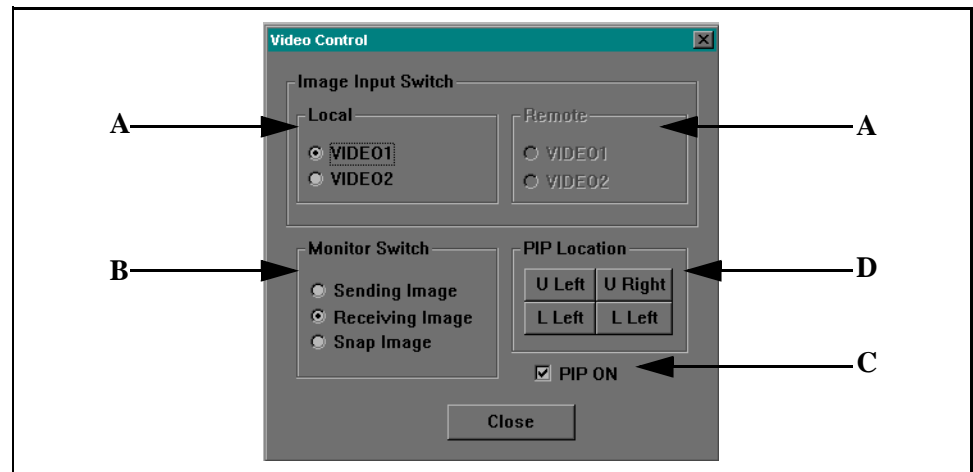


Figure 8-2: Video Control Screen

A. Local and Remote Video Input Switch

Click **VIDEO 1** or **VIDEO 2** radio button to be sent by the local or remote site.

B. Monitor Switch

Click **Sending Image**, **Receiving Image**, or **Snap** radio button to switch the image output being viewed on the monitor.

Sending Image: Displays the local image on the local monitor.

Receiving Image: Displays the remote image on the local monitor.

Snap Image: Displays the last sent or received snap shot image.

C. PIP ON

Use this checkbox to display/hide the PIP (secondary screen that displays 1/9 size of local camera image).

D. PIP Position

The PIP can be displayed in any of the four (4) quotients: [Upper Right], [Lower Right], [Upper Left], and [Lower Right].

Click **Close** to close **Video Control** dialog.

Note 1: When connected through a MCU Chairman mode will have to be activated to select [Remote] in the [Video Input Switch] field. Point-to-Point environments require both ends to support H.281/H.224 or NEC mode.

Note 2: PIP will not appear when the sending image is being viewed.

8.1.2 Audio Control

This sets the setting for output volume and microphone condition.

Click **Audio Control** icon on the **AV Control Toolbar**. Or select **Conference | Audio Control** from the **Main menu**.

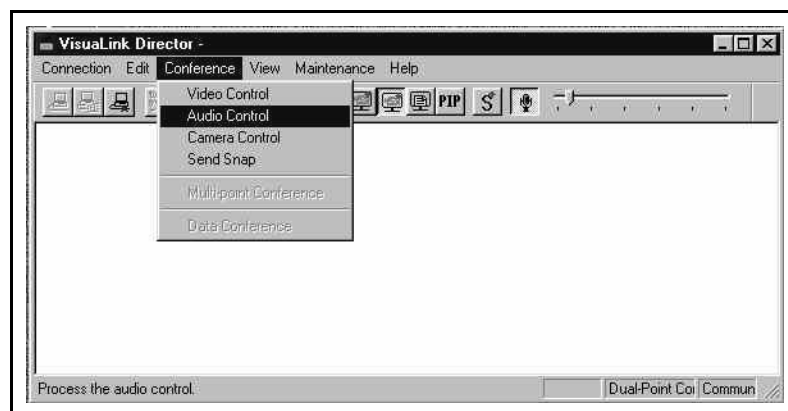


Figure 8-3: Conference | Audio Control Menu

Volume and **Mic. OFF** display will be shown.

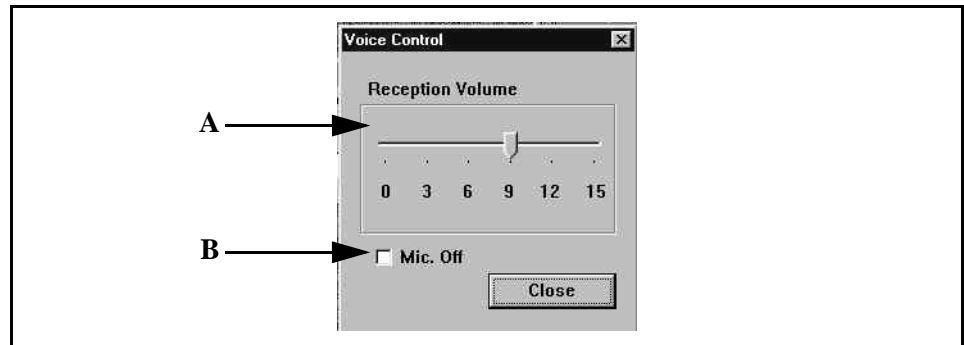


Figure 8-4: Audio Control

A. Receiving Volume

Click and drag the arrow to adjust the receiving volume.

B. Mic. OFF

Use this checkbox to switch the microphone ON or OFF. To turn the microphone OFF, check this checkbox.

Click **Close** to close **Audio Control** dialog.

8.2 Camera Control

Follow the operation below to control remote/local camera.

Operation

Select **Conference | Camera Control** from the **Main Menu**.

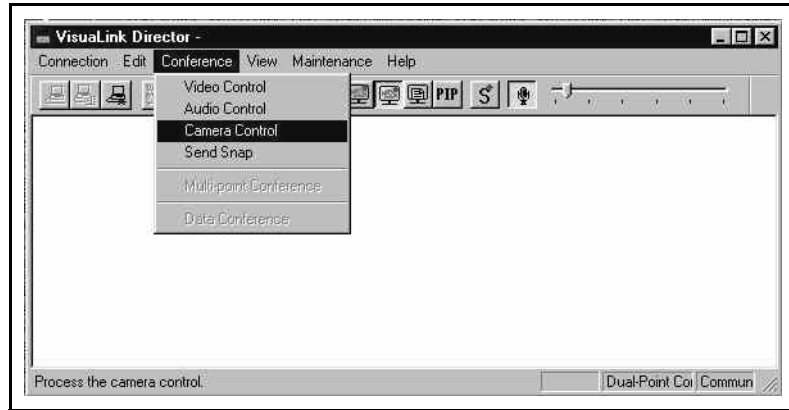


Figure 8-5: Conference | Camera Control

Camera Control dialog appears.

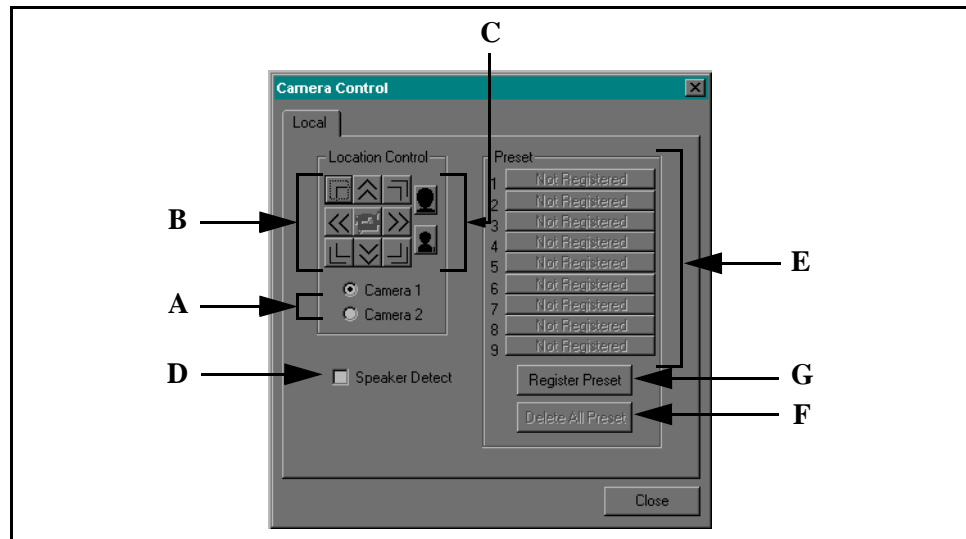


Figure 8-6: Camera Control

A. Camera Select

Use these radio buttons to select the camera you wish to control.

B. Tilt

Use these buttons to control the camera position: Up/Down/Left/Right/Upper Right/Lower Right/Upper Left/Lower Left.

C. Zoom

You can use these buttons to control the zoom. Click [Zoom Up] or [Zoom Out] to start zooming. The movement starts when you select the icon (with left mouse button). To stop the movement, release the icon (from left mouse button).

D. Voice Detect

Sets the voice activated presets ON or OFF. Use this checkbox to switch auto speaker detect ON or OFF. Check this checkbox to activate the auto voice detect.

E. Preset Control

Click one of 1 ~ 9 preset button to adjust the camera with registered position and zoom. You can register the Preset button name. “Unregistered” appears when the preset button does not contain any registered position. Preset buttons on the Remote tab displays the fixed names: “Preset 1” ~ “Preset 9”.

F. Delete All button

Click this button to delete all the camera preset.

G. Preset Registration button

Click this button to display **Preset Registration** dialog. Set [Registering Preset No] and [New Speaker], then click **OK** button to register the currently controlling camera’s position and zooming information. Clicking **OK** causes to close **Preset Registration** dialog and open the Camera Control [Local] tab or [Remote] tab.

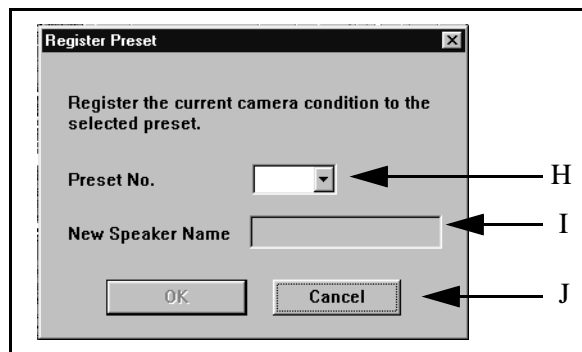


Figure 8-7: Preset Registration

H. Registering Preset No.

Use this dropdown list to select the preset No. that you wish to register.

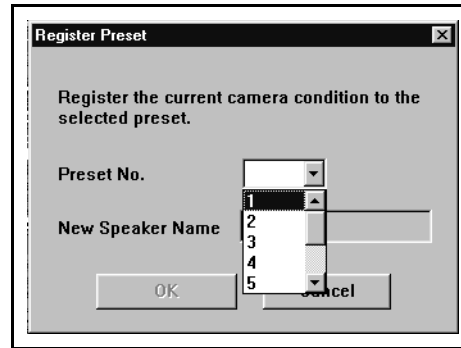


Figure 8-8: Dropdown List

I. New Participant

Type participant's name that you wish to register.

J. Cancel button

Use this button to close **Preset Registration** dialog and open the Camera Control [Local] tab or [Remote] tab.

Click **Close** button to close **Camera Control** dialog and quit this function.

Note 1: Chairman mode needs to be active to control the remote camera during a multi-point conference.

Note 2: Remote camera control will only work with those systems that support H.281/H.224 or NEC mode.

Note 3: Diagonal camera movements are not supported on VC-C1 camera.

Note 4: [Preset Delete All] and [Preset Registration] settings are only for the Local camera.

8.3 Sending a Snap

You can send high resolution still image to a participant. Follow the operation below to send a snap image.

Operation

Select **Conference | Send Snap** from the **Main Menu**.

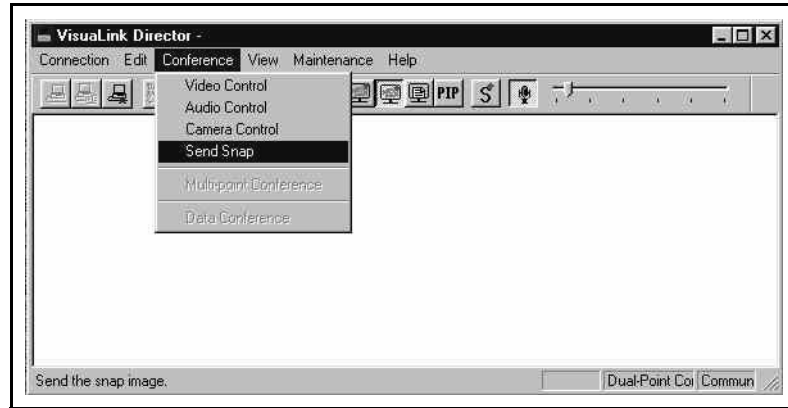


Figure 8-9: Conference | Send Snap Menu

Send Snap dialog appears.

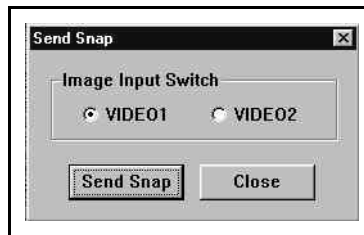


Figure 8-10: Snap Screen

VIDEO1 and **VIDEO2** radio buttons in the [Video Input] field shows the current setting status of the video input line.

Click **VIDEO1** or **VIDEO2** radio button to switch the video input line that you wish to use for the snap transmission.

Click **Send Snap** to start sending an image on selected video input line as a snap.

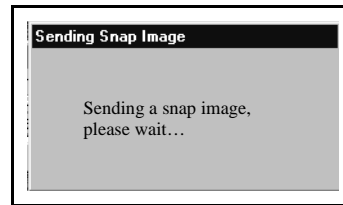


Figure 8-11: Sending Snap Image

Sending Snap dialog appears while the sending snap shot message is displayed you cannot execute any other operation until the snap transmission is completed. System will close **Sending Snap** dialog and terminate this after the image transmission. Click **Close** to close **Send Snap** dialog and quit this function.

Note: Video coding must be set to CIF in order to send a snap image.

8.4 Starting a Data Conference

You can start a data conference by selecting the **Maintenance | Environment** option from the **Main Menu**. Use this function to start the data conference with the participants of the current video conference. Dual execution is not available for the data conference application.

Operation

Click **Data Conference** icon on the Standard Toolbar. Or select **Conference | Data Conference** from the **Main Menu**.

System will start the selected data conference application.

Note: Data conference is available only when **Maintenance | Environment | Serial Port1** is T.120 and all the participants are capable of the data conference. Data conference is not available when communication mode is MLP Speed: OFF.

8.5 Conference Information

Displays the current conference participant's information and the common mode of communication. Displays the participants' name for the multi point conference.

Operation

Click **Conference Information** icon on the **Standard Toolbar**. Or select **View | Conference Information** from the **Main Menu**.

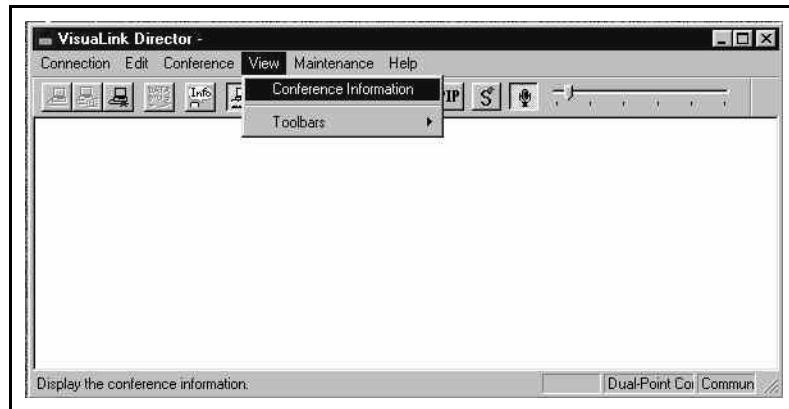


Figure 8-12: View Menu

Conference Information dialog appears.

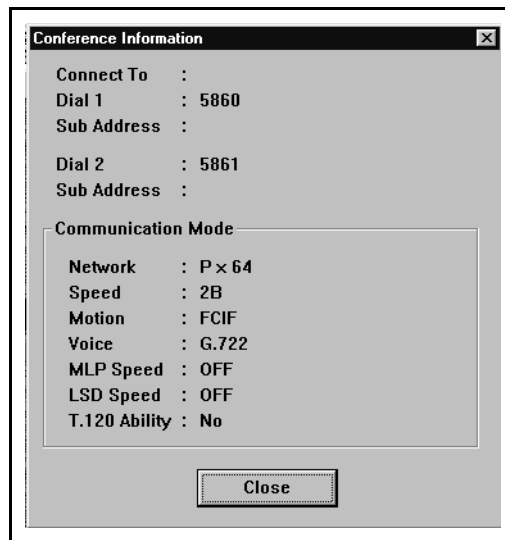


Figure 8-13: Conference Information

Click **Close** to close **Conference Information** dialog and quit this function.

The following dialog appears for the dual point conference.

The following dialog appears for the multi point conference. Participants' field displays the name of participants.

This page is for your notes.

Chapter 9 Multi-Point Conference

VisuaLink Director provides the NEC proprietary **Multi-Point Conference** control and also the ITU-T recommended H.243 compatible **Multi-Point Conference**.

Follow the operation below to control the **Multi-Point Conference**.

Operation

Select **Conference | Multi-Point Conference** from the **Main Menu**.

Multi-Point Conference dialog appears.

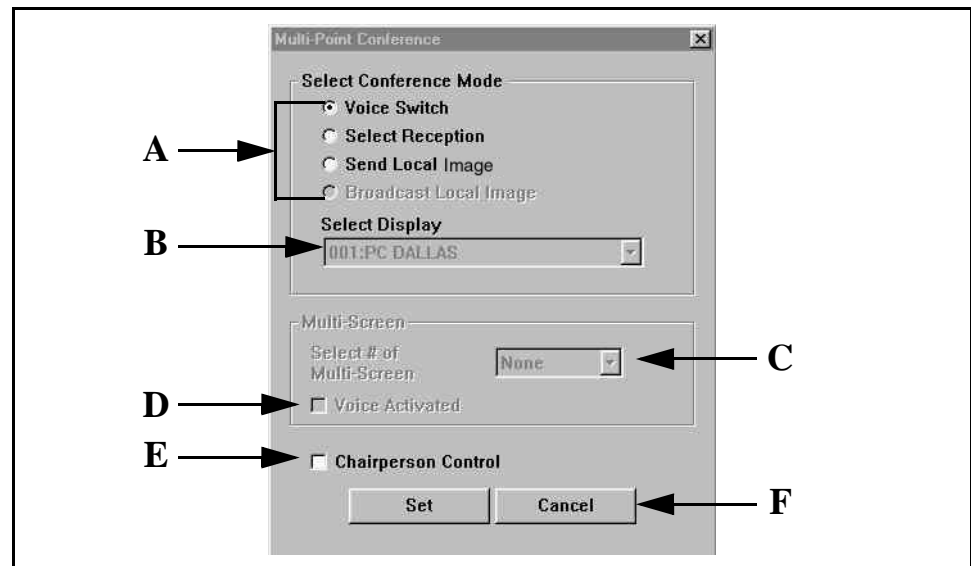


Figure 9-1: Multipoint Conference

A. Select Conference Mode

You can select the conference mode.

Voice Switch:

Sets the VisuaLink to an audio switching mode on which the local picture can automatically be switched to the picture received at the remote room where a talker is detected. The picture received at the local rooms changes as a talker changes in the teleconference. The site name of the room detecting a talker is displayed in the local picture.

Select Reception:

Sets the VisuaLink to an receive selection made in which the local participant can receive the picture transmitted from a desired remote participant. The site chosen to receive will always be displayed until either the conference is ended or the selective reception mode is deactivated.

Send Local Image: Sets the VisuaLink to broadcast its local video images to all the participants. Remote participants will see the local image for as long as the MCU recognizes this site as being the main speaker.

Broadcast Local Image: Sets the VisuaLink to broadcast local video image to all participants. Remote participants will see the local image for as long as no other site acquires chairman mode or the conference ends.

B. Select Display

Displays the list of participating terminal numbers and names. When you select [Receiving] or [Broadcasting] conference mode, use [Select Display] to select the displaying terminal.

C. Multi Image Mode

Activates the multiple image mode. This field is available only when proceeding through the NEC5100A **Multi-Point Conference**.

- None : Display image with single image.
- 4 images : Display image by dividing into 4 images.
- 9 images : Display image by dividing into 9 images.
- 16 images : Display image by dividing into 16 images.

D. Voice Activated

Use this checkbox to display the image of speaking terminal preferentially when [4 images], [9 images], or [16 images] are selected. This field is available only when proceeding multi point conference supports the multiple images.

E. Chairman Control

Check this checkbox and click **Set** to achieve the chairman. When you select [Broadcasting] conference mode, you cannot deny (uncheck the checkbox) the chairman.

F. Cancel

Click **Cancel** to close **Multi-Point Conference** dialog and quit this function.

Operation

Click **Set**, after you select conference mode, multi pane mode, and chairmanship. System will update the **Multi-Point Conference** with selected settings and closes **Multi-Point Conference** dialog.

Chapter 10 Phonebook

Use this function to edit the phonebook. You can register, edit and/or delete the information in the Phonebook.

10.1 Registering New Phonebook Information

Follow the operation below to register the new data into the phonebook.

Operation

Select **Edit | Phonebook** from the **Main Menu**.

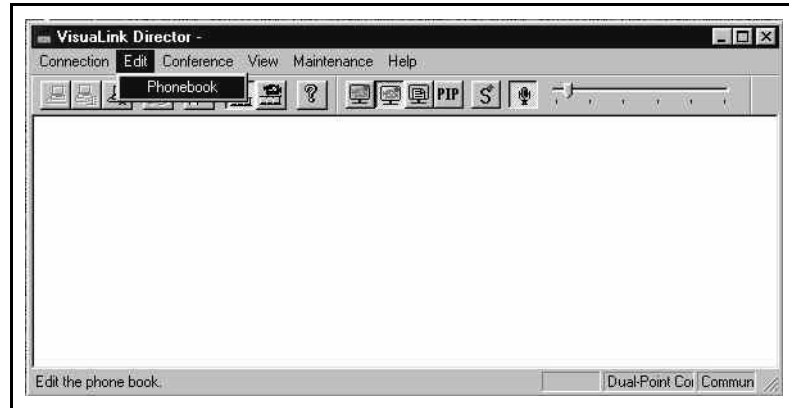


Figure 10-1: Edit Phonebook Menu

Phonebook (Edit) dialog appears.

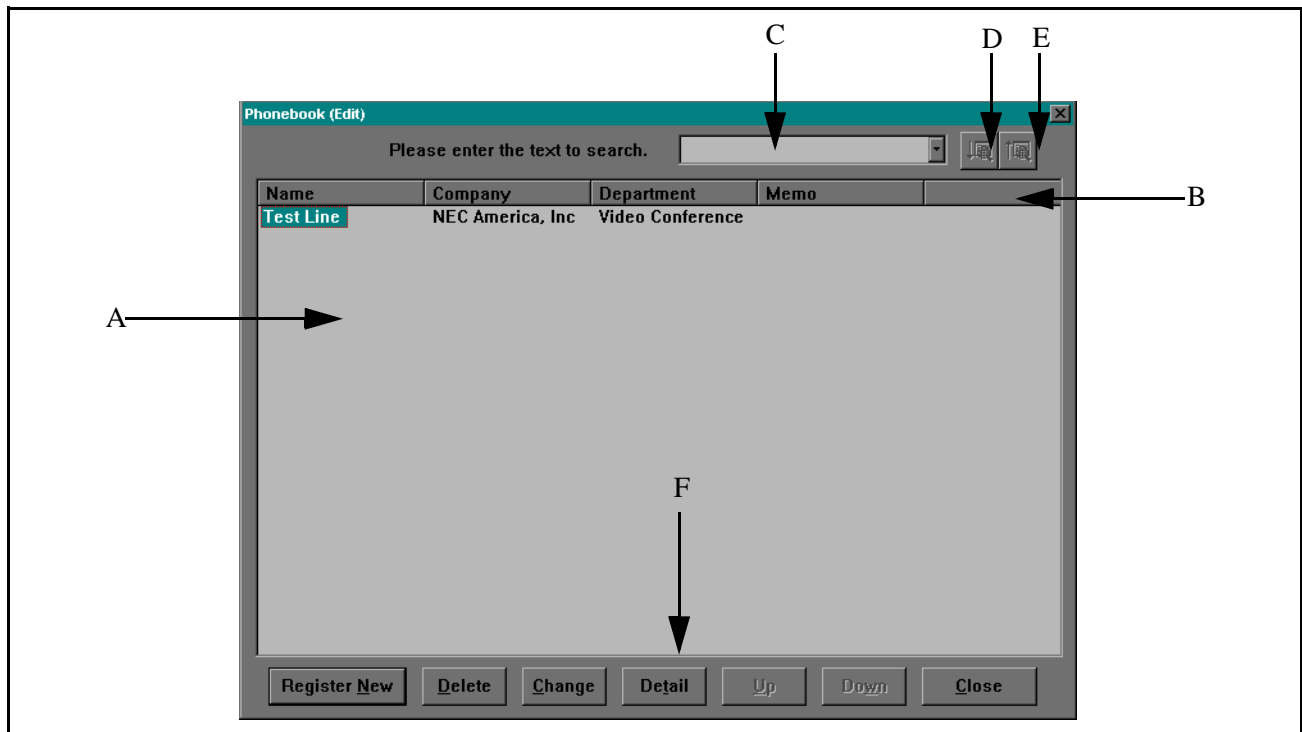


Figure 10-2: Phonebook Screen

A. Phonebook List

This list can retain up to 130 call profiles. Displays call profiles in the order of registration.

B. Headers

Call profile headers are buttons. Click any field name button to sort the items based on selected field.

C. Search

Searches through the Phonebook to find a match. Drop-down list can display up to 16 previous search texts. You can also select a search text from this drop-down list.

D. Search Down button

After you specified the search text, click **Search Down** to start the text search from highlighted data to the bottom of the list. Highlighted text indicate matches in text. Message box appears if there is no matched text.

E. Search Up button

After you specified the search text, click **Search Up** to start the text search from highlighted data to the top of the list. Highlighted texts indicate matches in text. Message box appears if there is no matched text.

F. Detail button

Click the **Detail** button to display additional caller information on the selected item.

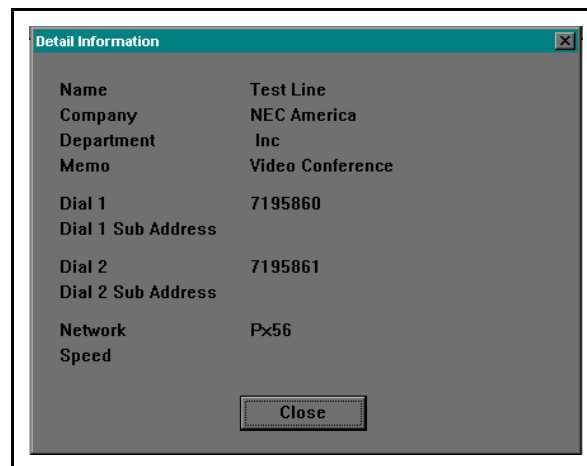


Figure 10-3: Detail Information

Click **Close** to close **Detail** dialog and revert to **Phonebook (Dial)** dialog.

Click **Register New**.

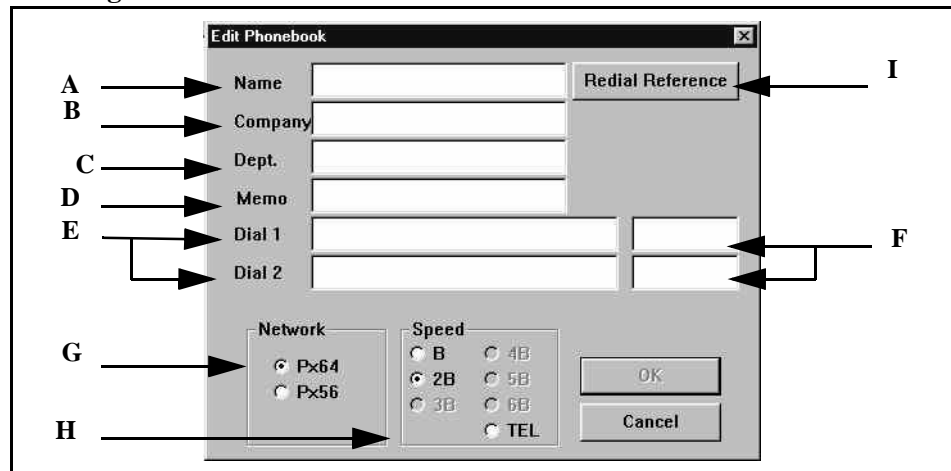


Figure 10-4: Edit Phonebook

Edit Phonebook dialog appears.

A. Name

Type the name of a person you wish to register. (max 20 characters))

B. Company

Type the company name: up to 20 characters.

C. Dept.

Type the department: up to 20 characters.

D. Memo

You can use this section to enter additional information: up to 20 characters.

E. Dial1/Dial2

Enter remote Dial 1/Dial 2 number into each entry field. You can use dial keys or keyboard to enter 20 digit numbers. Dial 2 entry is not available unless you select [2B] **Communication Speed**.

F. Dial1 Sub Address/Dial2 Sub Address

Enter remote Dial 1 sub address/Dial 2 sub address into each entry field. You can enter up to 8 digit address. Dial 2 sub address entry is not available unless select [2B] communication speed.

G. Network

Select [Px64] or [Px56].

H. Communication Speed

Select [B], [2B], or [TEL] for VisuaLink 128, select any speed for VisuaLink 384.

I. Redial Reference button

Click **Redial Reference** to display **Insert from Redial** dialog.

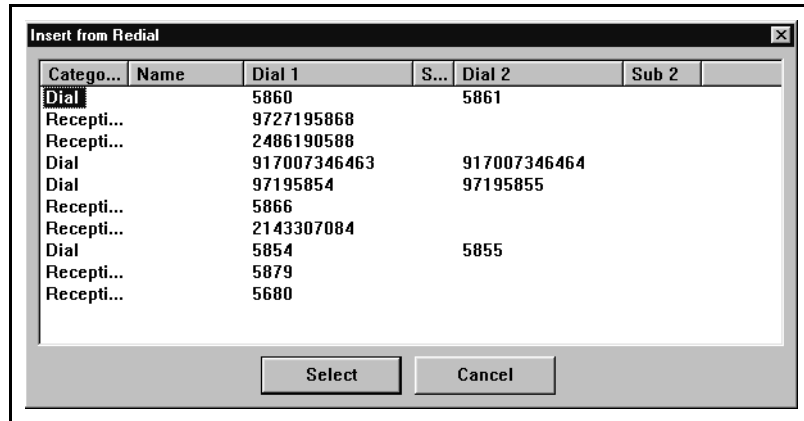


Figure 10-5: Insert from Redial

Insert from Redial dialog provides the redial list (calling/receiving history). Click one data from the list, then click **Select**. System will close **Insert from Redial** dialog and displays the selected information on **Edit Phonebook** dialog. Click **Cancel** button to simply close **Insert from Redial** dialog and revert to the **Edit Phonebook** dialog.



Figure 10-6: Edit Phonebook

1. Enter the registration information, then click **OK** button. System will close **Edit Phonebook** dialog, then displays **Phonebook (Edit)** dialog, which contains the new information on the bottom of the list.
2. Click **Cancel** button to simply close **Edit Phonebook** dialog and revert to **Phonebook (Edit)** dialog.
3. Click **Close** to close **Phonebook (Edit)** dialog and quit the function.

Note: **Redial Reference** is not available if there is no redial information.

You need to enter Name and Dial1 information to register the new information.

**10.2 Editing
Phonebook
Information**

Follow the operation below to change the contents of the data registered in the Phonebook.

Select **Edit | Phonebook** from the **Main Menu**.

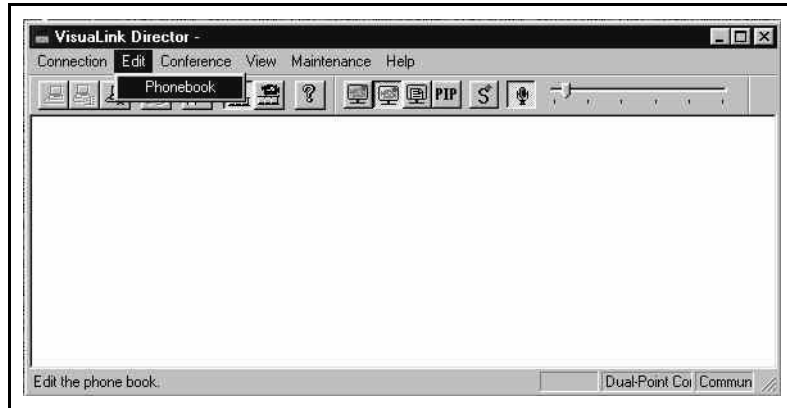


Figure 10-7: Edit Phonebook Menu

Phonebook (Edit) dialog appears.

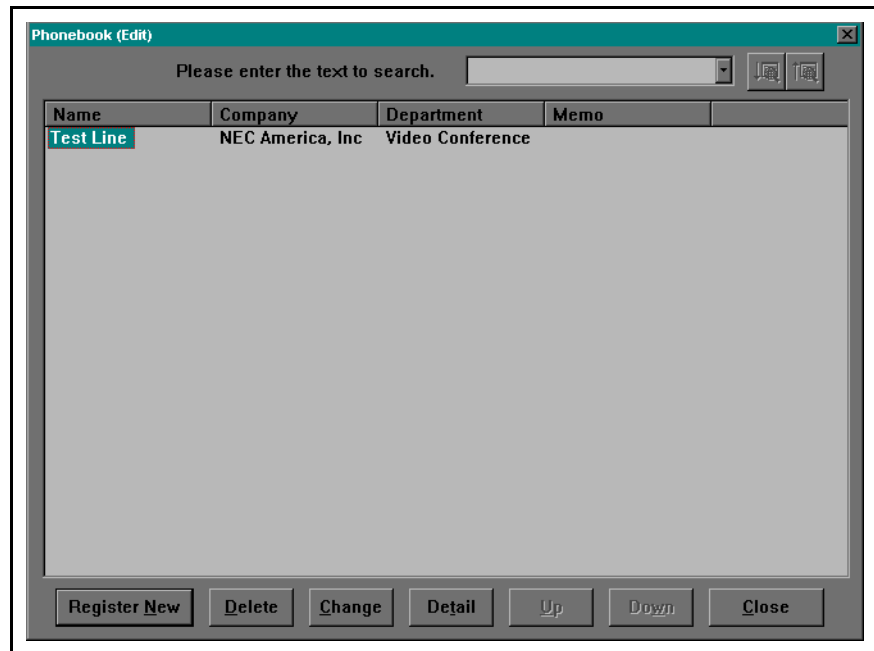


Figure 10-8: Phonebook (Edit)

Click one of the data, which you wish to edit, then click **Change**. **Edit Phonebook** dialog displays the information of selected item.

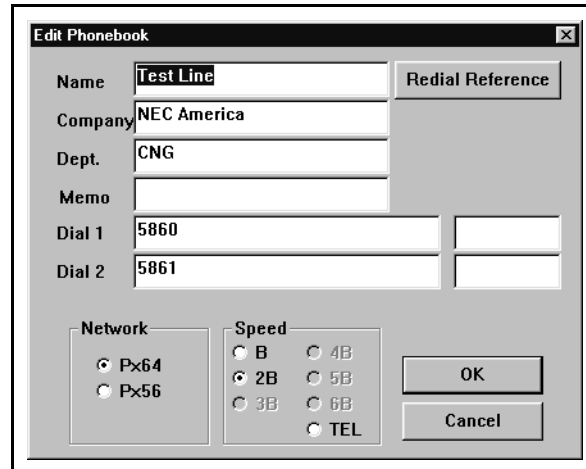


Figure 10-9: Edit Phonebook

Change the previous information, then click **OK** button.

System will close **Edit Phonebook** dialog and **Phonebook (Edit)** dialog with the new information.

Click **Cancel** to simply close **Edit Phonebook** and revert to **Phonebook (Edit)** dialog without changing the information.

Click **OK** to close **Phonebook (Edit)** dialog and quit this function.

Note: To display the information on **Edit Phonebook** dialog, you can double-click one data from the phone list.

**10.3 Deleting
Phonebook
Information**

Follow the operation below to delete the registered data from the Phonebook.

Select **Edit | Phonebook** from the **Main menu**.

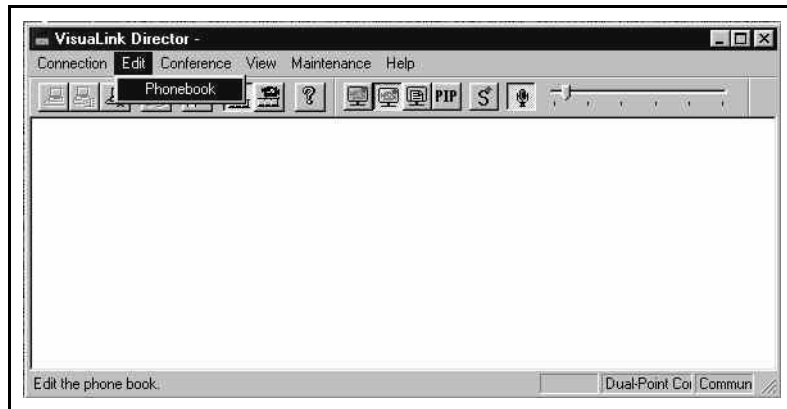


Figure 10-10: Edit Phonebook Menu

Phonebook (Edit) dialog appears.

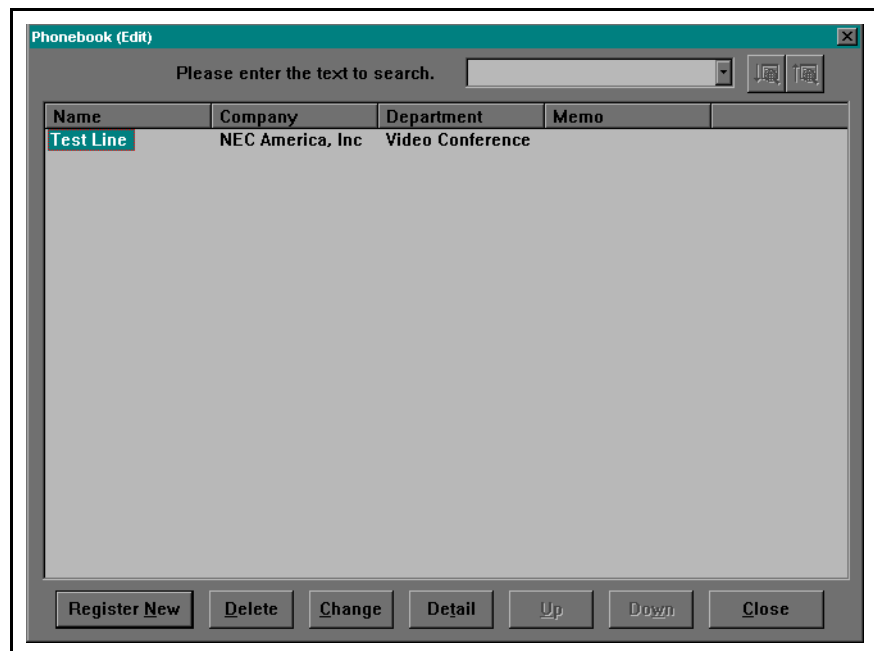


Figure 10-11: Phonebook (Edit)

Click one data, which you wish to delete from the list, then click **Delete**. **Delete Phonebook** dialog displays the information of selected item.

Click **Close** to close **Phonebook (Edit)** dialog and quit this function.

This page is for your notes.

Chapter 11 Maintenance

VisuaLink Director provides the maintenance function that uses the environment setting, user password editing, loopback testing, and communication history viewing.

11.1 Environment Setting

Use this function to set the environment of VisuaLink Director. This [Environment Setting] screen consists of 7 settings: [Voice], [Image], [User1], [User2], [Line], and [Serial]. [Environment Setting] is available when the conference is not proceeding.

Operation

Select **Maintenance | Environment** option from the **Main Menu**.

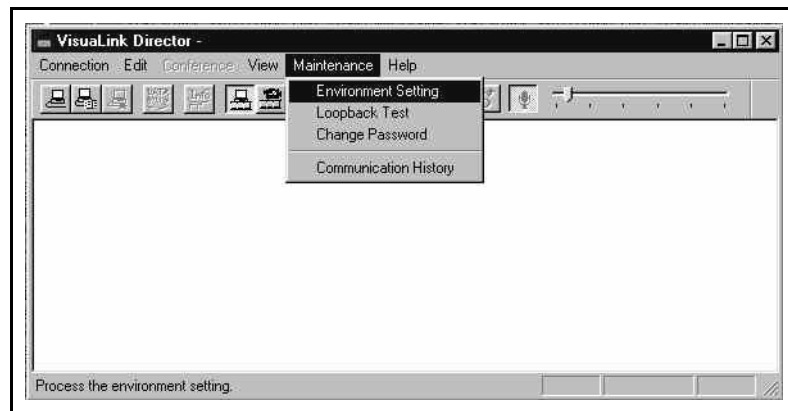


Figure 11-1: Maintenance | Environment Menu

Environment Setting dialog appears. Display contents contains the current setting status.

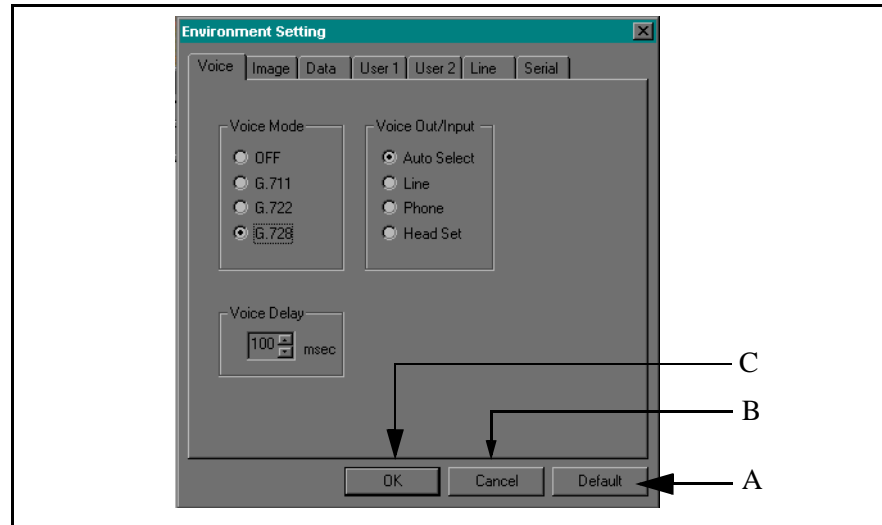


Figure 11-2: Environment Setting

A. Default button

Click this button to set all the environment items to the default setting. See the later page **Voice Setting ~ Serial Setting** for the default values of each items.

B. Cancel button

Click **Cancel** to close **Environment Setting** dialog and quit this function. The setting contents will not change.

C. OK button

Click OK button after changing the setting values.

System updates the values for VisuaLink. After these procedures, system will reset VisuaLink and closes **Environment Setting** dialog.

Note: It will take 10 seconds to complete the restart procedure. You cannot manipulate any data entry while the restart procedure.

11.1.1 Audio Setting

Use this function to set the audio related items.

Select **Maintenance | Environment** to display **Environment Setting**, then **Audio** tab.

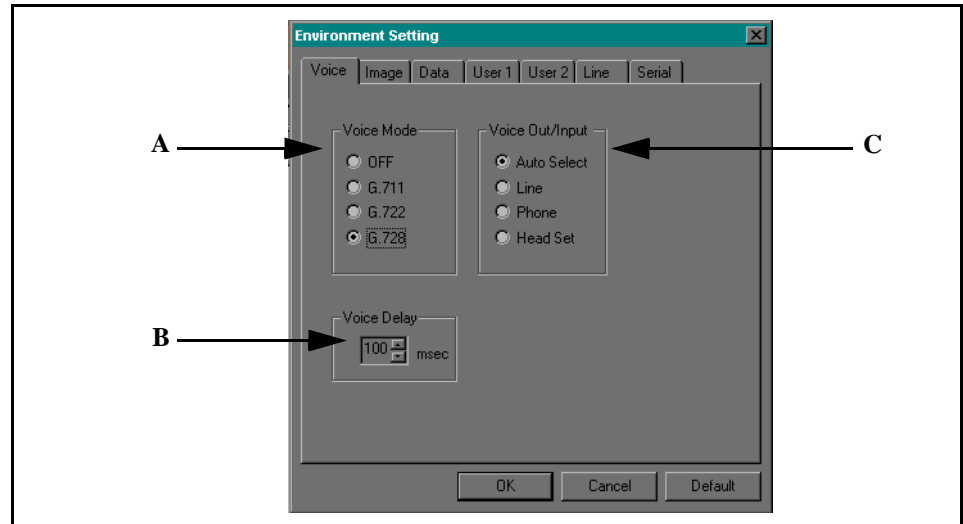


Figure 11-3: Voice Setting

A. Voice mode

You can select the voice mode for the conference. Default setting is G.728.

B. Voice Delay

You can set the sending voice delay. Use the spin button to select the value with 10 msec intervals and 0~240 msec setting range. Default value depends on the transmission speed selected.

C. Voice I/O Switching

You can select the audio Input and Output line. Default value is Auto Select. If the default is used, then the VisuaLink will determine the configuration and input and output audio to connected ports.

11.1.2 Image Setting

This function relates to video algorithm settings.

Select **Maintenance | Environment** to display **Environment** dialog, then **Image** tab.

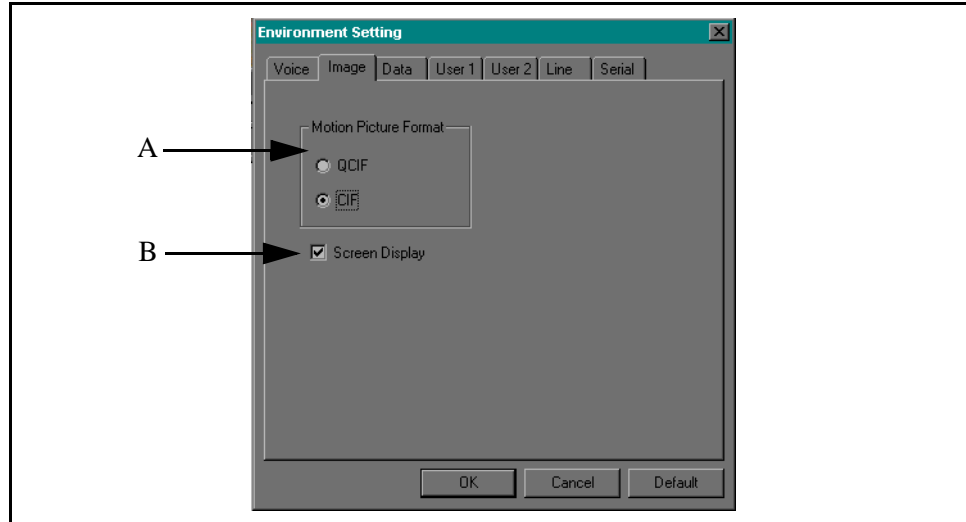


Figure 11-4: Image Setting

A. Motion Image Format

You can select the motion image format that you wish to use on the conference. Default value is CIF.

B. Screen Display

Check this checkbox to display the conference information and time on the output monitor. This checkbox is checked (unhidden) as a default.

11.1.3 Data Setting

Use this function to set the data communication speed.

Select **Maintenance** | **Environment** to display **Environment** dialog, then **Data** tab.

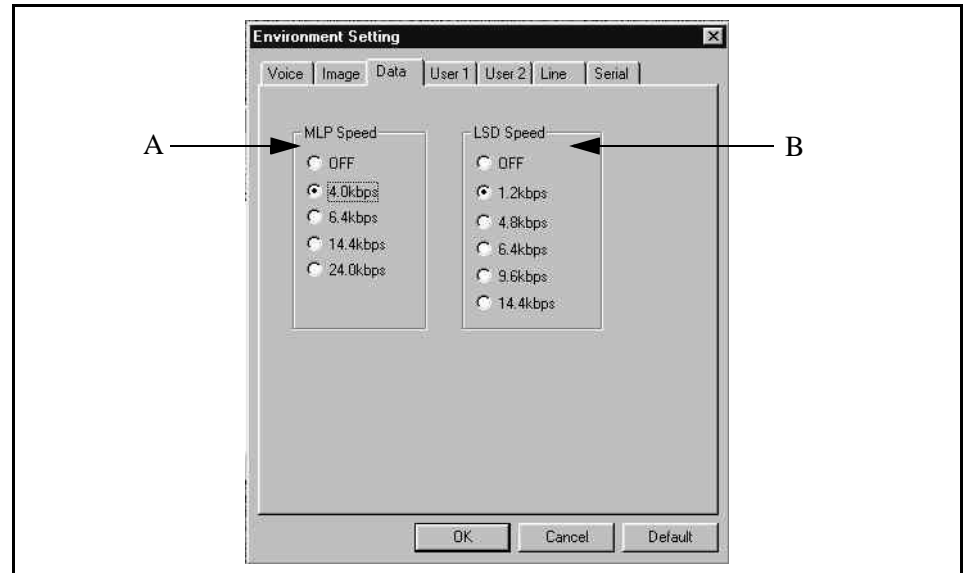


Figure 11-5: Data Setting

A. MLP Speed

You can set the MLP speed that is used for the data conference, NEC proprietary conference, and NEC proprietary camera control. Default value is 4.0 kbps.

B. LSD Speed

You can set the LSD speed that is used for the data transfer, and ITU-T standard camera control. Default value is 1.2 kbps.

11.1.4 User 1 Setting

Use this function to set the user information and call receiving.

Select **Maintenance | Environment** to display **Environment** dialog, then **User 1** tab.

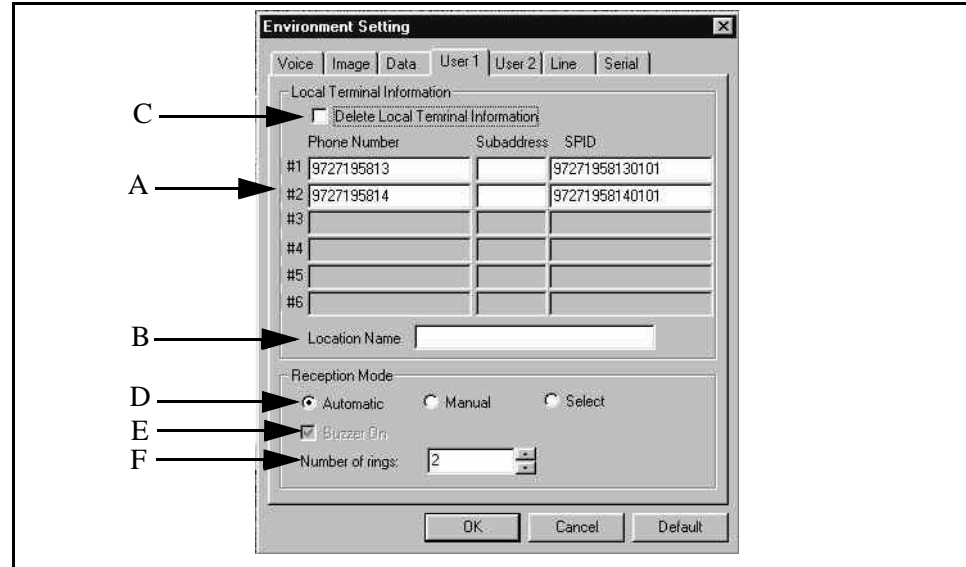


Figure 11-6: User 1 Setting

A. Phone Number

You can enter your own phone number (dial/sub address). Only numerical texts are available for the phone number entry. Maximum characters are 20 for the phone number and 8 for the sub address. No registered data appears for the default.

B. Location

You can enter own location. Data entry is not available when you activate **Delete Own Information**. No registered data appears for the default.

C. Delete Own Information

Check this checkbox when you wish to delete your registered phone number and location.

D. Reception Mode

Use this section to specify the call receiving mode. Default value is Auto.

E. Call Notification

Check this checkbox to activate a buzzer when you receive a call. Default is unchecked.

F. Number of Rings

Set the number of rings that are required before call is answered.

Note: You cannot set **Phone Number**, **Receiving Mode**, and **Call Notification** when the basic proprietary line.

11.1.5 User 2 Setting

Use this function to set the start-up information setting for VisuaLink Director. Select **Maintenance | Environment** to display **Environment** dialog, then **User 2** tab.

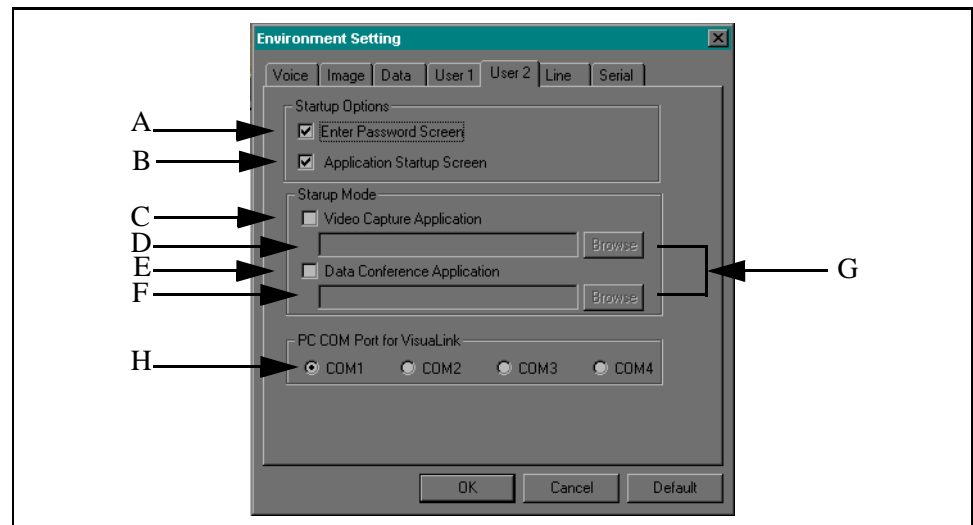


Figure 11-7: User 2 Setting

A. Display Password dialog

Check this checkbox to display **Confirm Password** dialog for each VisuaLink Director start-up operation. Default is unchecked (hide **Confirm Password** dialog).

B. Display Run dialog

Check this checkbox to display **Run** dialog for each VisuaLink Director start-up operation. Default is checked (display **Run** dialog).

C. Video Capture Application

Check this checkbox to start the video capture application from a default path. Default is unchecked (deactivate video capture application).

D. Video Capture Application Path

To change a path, you can manually type a path of the video capture application.

E. Data Conference Application

Check this checkbox to start the data conference application from a default path. Default is unchecked (deactivate data conference application).

F. Data Conference Application Path

To change a path, you can manually type a path of the data conference application.

G. [Reference...] button

To change a path, you can also click this button to display **Select Path** dialog that allows you to select a path visually.

H. PC COM Port for VisuaLink buttons

Select the correct COM port that is connected to the VisuaLink.

11.1.6 Line Setting

Use this function to set the start-up information setting for VisuaLink Director. Select **Maintenance | Environment** to display **Environment** dialog, then **Line** tab.

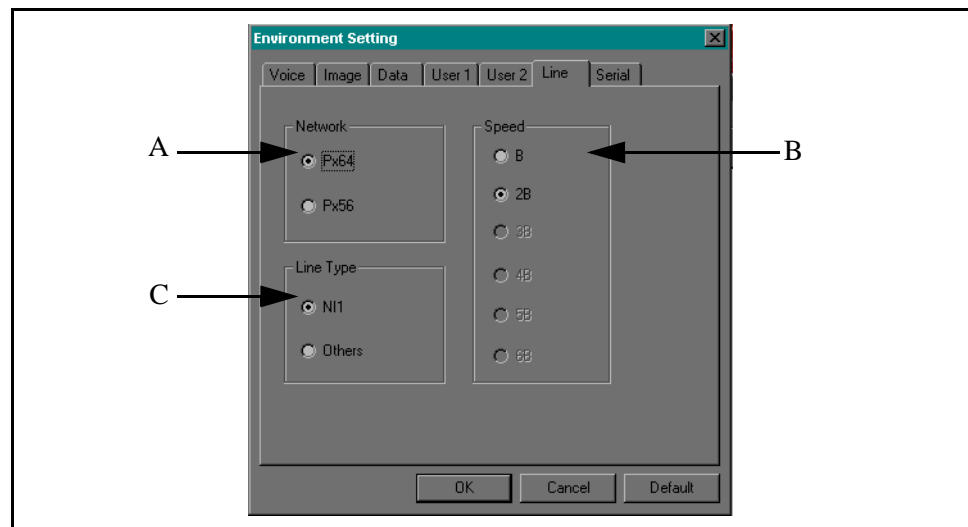


Figure 11-8: Line Setting

A. Network

Use this field to select a network type for the conference capability of call receiving. Default is Px64.

B. Communication Speed

Use this field to select a communication speed for the conference capability of call receiving. Default is 2B.

C. Line Type

Use this field to select a line type for the conference capability of call receiving. Default is National ISDN (NI1).

11.1.7 Serial Setting

Use this function to set the Serial Port 1.

Select **Maintenance | Environment** to display **Environment** dialog, then **Serial** tab.

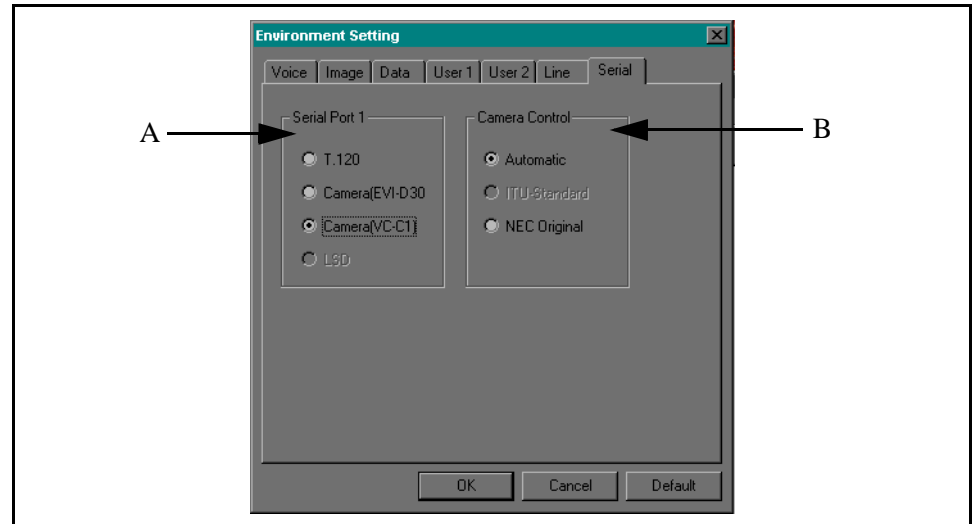


Figure 11-9: Serial Setting

A. Serial Port 1

Use this field to select a hardware that you wish to connect to VisuaLink. Default is Camera (EVI-D30).

B. Camera Control

Use this field to select a remote camera control method. To activate this item, you need to select Camera (EVI-D30) or Camera (VC-C1) on **Serial Port 1** field. Default is Auto.

11.2 Changing Your Password

Follow the operation below to change the registered password.

Operation

Select **Maintenance | Change Password** from the **Main Menu**.

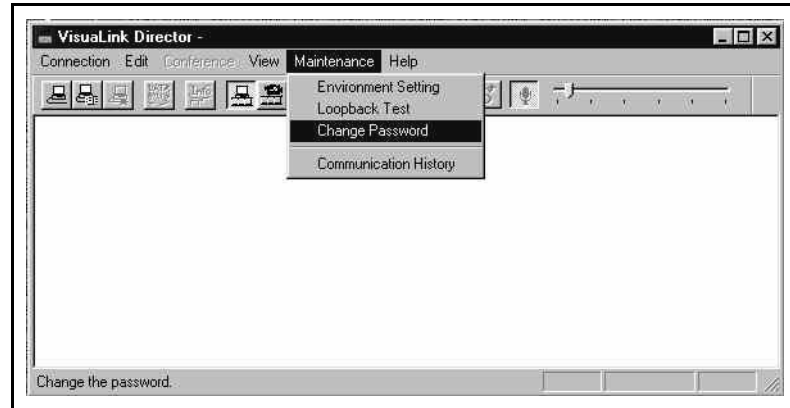


Figure 11-10: Change Password Menu

Change Password dialog appears.

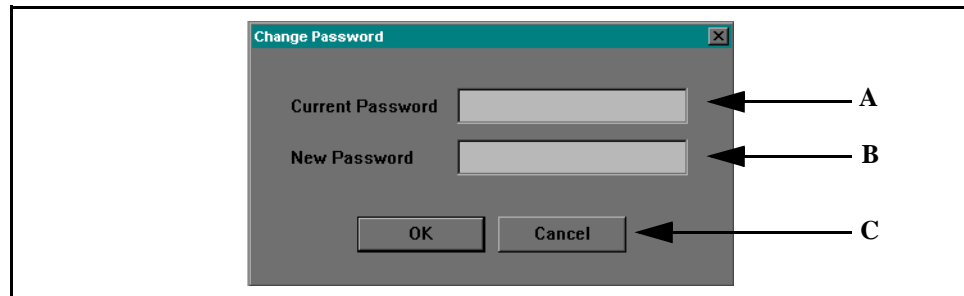


Figure 11-11: Change Password

A. Current Password

Type the currently registered password. "*" will appear as you type.

B. New Password

Type new password that you wish to register. You can enter up to 16 characters. "*" will appear as you type. Spacing is not available.

C. Cancel button

Click this button to close **Change Password** dialog and quit this function.

Type both **Current Password** and **New Password**, then click **OK**. **Password Confirmation** dialog appears when current password and registered password match. If you enter an incorrect password, you are prompted to reenter the password correctly.

Type the new password that you registered, then click **OK**. When the new and registered password are matched, system updates the password and closes both

Password Confirmation dialog and **Change Password**.

If entered password is incorrect, you need to reenter the correct password.

Click **Cancel** to close **Password Confirmation** dialog, then quit this function.

11.3 Starting a Loopback Test

You can test the system operation by executing the remote/local loopback test. Follow the operation below to start the loopback test.

Operation

Select **Maintenance | Loopback Test** from the **Main Menu**.

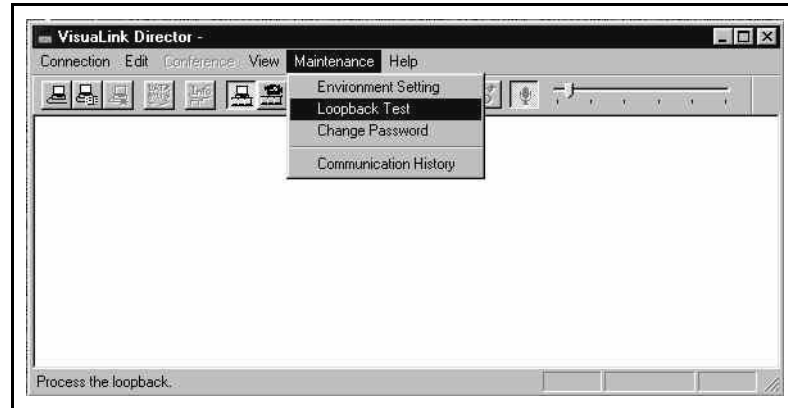


Figure 11-12: Maintenance Menu

Loopback Test dialog appears.

Select a test method that you wish to manipulate.

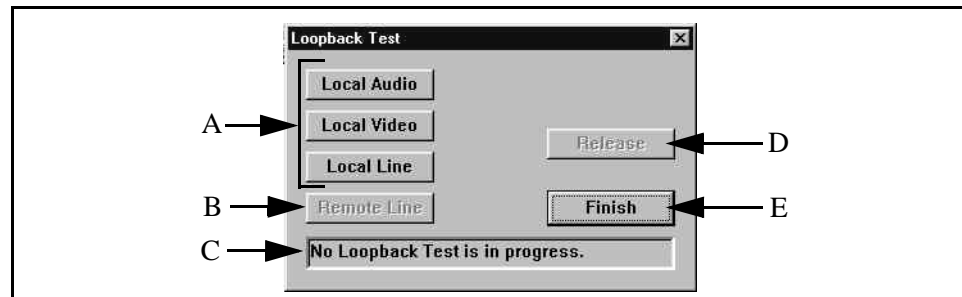


Figure 11-13: Loopback Test

A. Local Loopback Test

You can select the test items. You cannot start this test when the conference is in process.

B. Remote Loopback Test

You can start the Remote Loopback Test. You cannot start this test when the conference is not in process.

C. Test Window

Displays the progress of the loopback test being performed.

D. Release button

Press the Release button to cancel the loopback test.

E. Finish button

Click **Finish**. If you click this button during the testing, the system aborts the test and closes **Loopback Test** dialog.

11.4 Viewing a Communication History

You can confirm the previous communication history.
Follow the operation below to view the history.

Operation

Select **Maintenance | Communication History View** from the **Main menu**.

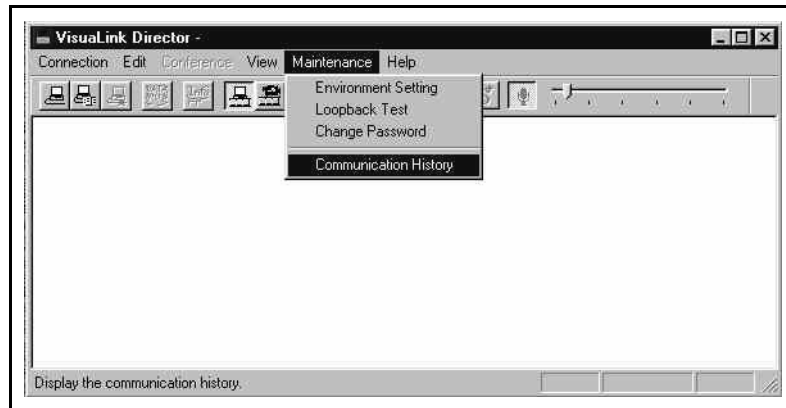


Figure 11-14: Maintenance Menu

Communication History dialog appears.

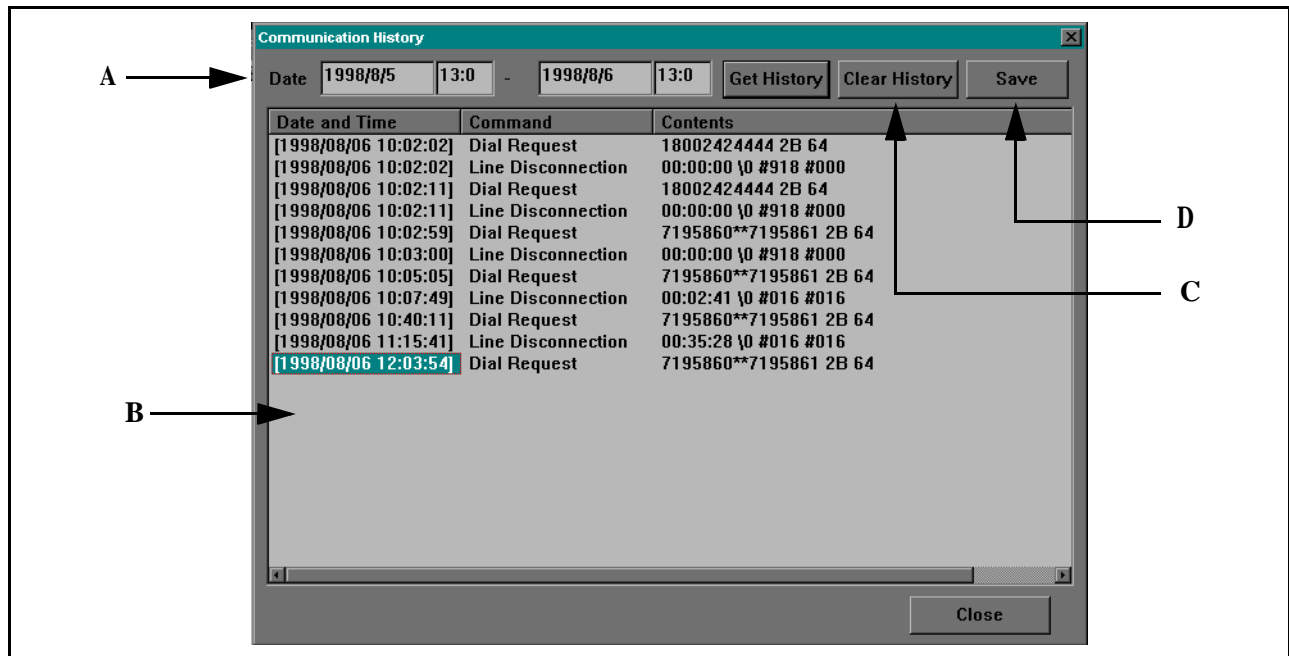


Figure 11-15: Communication History

A. Date and Time

You can select by typing the range that you wish to confirm the communication history. Current date and time appear in this field when the Communication History dialog appears. If you click **Retrieve History** without date and time entry, you can retrieve all of the communication history data saved on VisuaLink.

B. History List

Displays the retrieved communication history information. This list contains command information, date/time, and contents of the calling request/receiving notification/disconnect notification.

C. Clear History button

You can delete the contents of the history list.

D. Save button

You can convert the history list contents into a text file.

Type the date and time range of the history that you wish to retrieve, then click **Retrieve History**. The program requests the communication history information to VisuaLink. **History List** displays the communication history information after the successful retrieval.

Click **Close** to close **Communication History** dialog and quit this function.

This page is for your notes.

Chapter 12 Help

12.1 Contents and Index

Operation

Select **Help | Contents and Index** from the **Main Menu**.

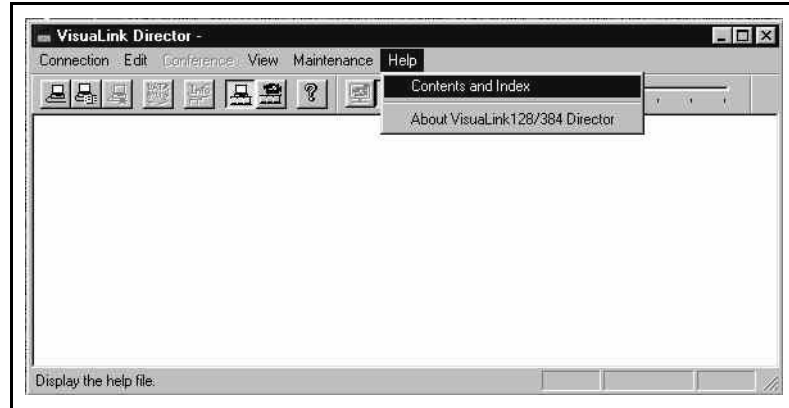


Figure 12-1: Help Menu

Help Topics: VisuaLink dialog appears.

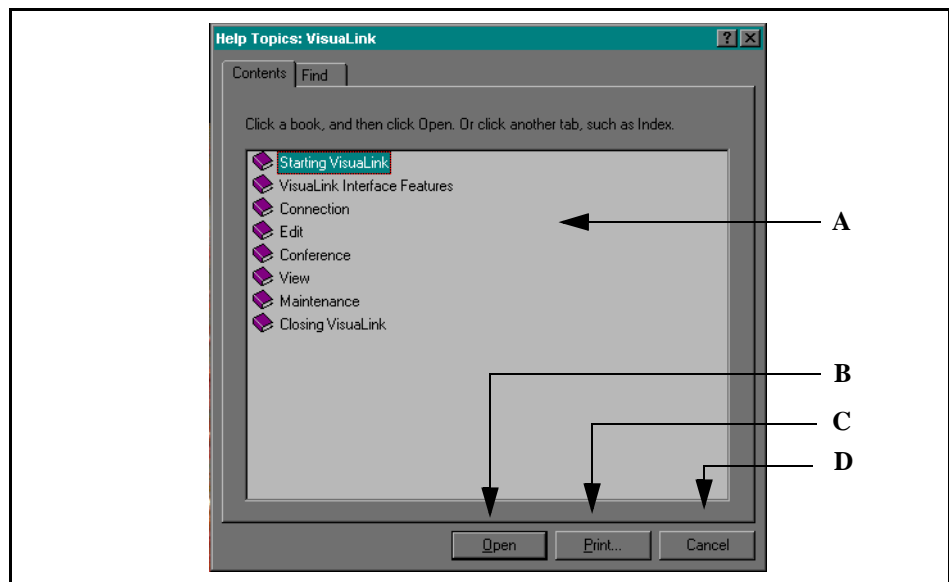


Figure 12-2: Help Topics Menu

A. Book Window

Choose the topic that you wish to review.

B. Open button

Click on the **Open** button to view selection.

C. Print button

Click **Print** button to obtain a hard copy of topic.

D. **Cancel** button

Press **Cancel** button to exit screen.

12.2 About VisuaLink

Operation

Select **Help** | **About VisuaLink** from the **Main Menu**.

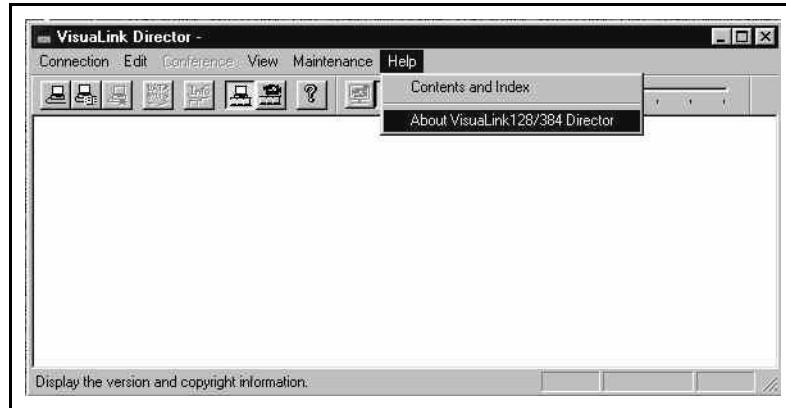


Figure 12-3: Help Menu

Version Information dialog appears.

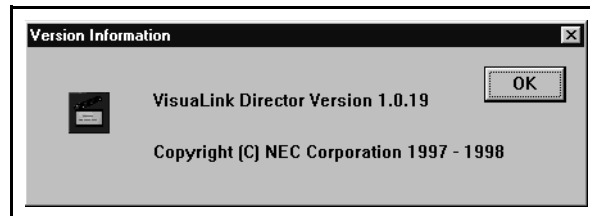


Figure 12-4: Version Information

Click **OK** to close **About VisuaLink** dialog.