

# **TOSHIBA Pocket PC Flash Update Tool**

*e750 User's Guide*

-

## Introduction

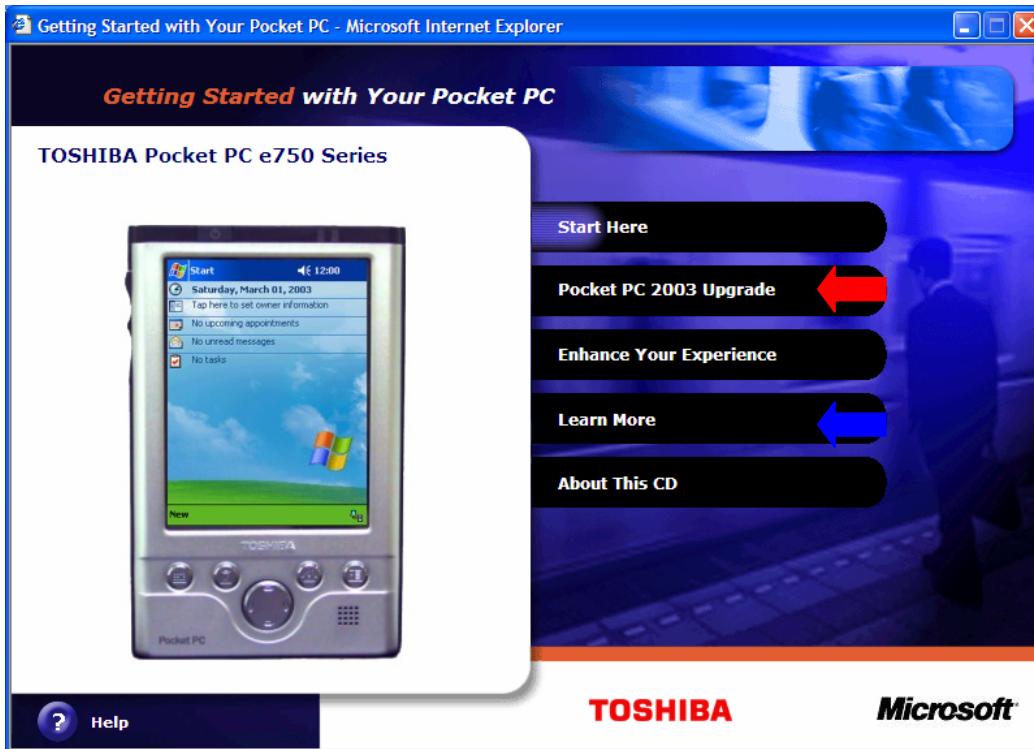
This document shows you how to get use the TOSHIBA Pocket PC Flash Update Tool to upgrade your Pocket PC device from Pocket PC 2002 to Pocket PC 2003.

## Starting the Installation



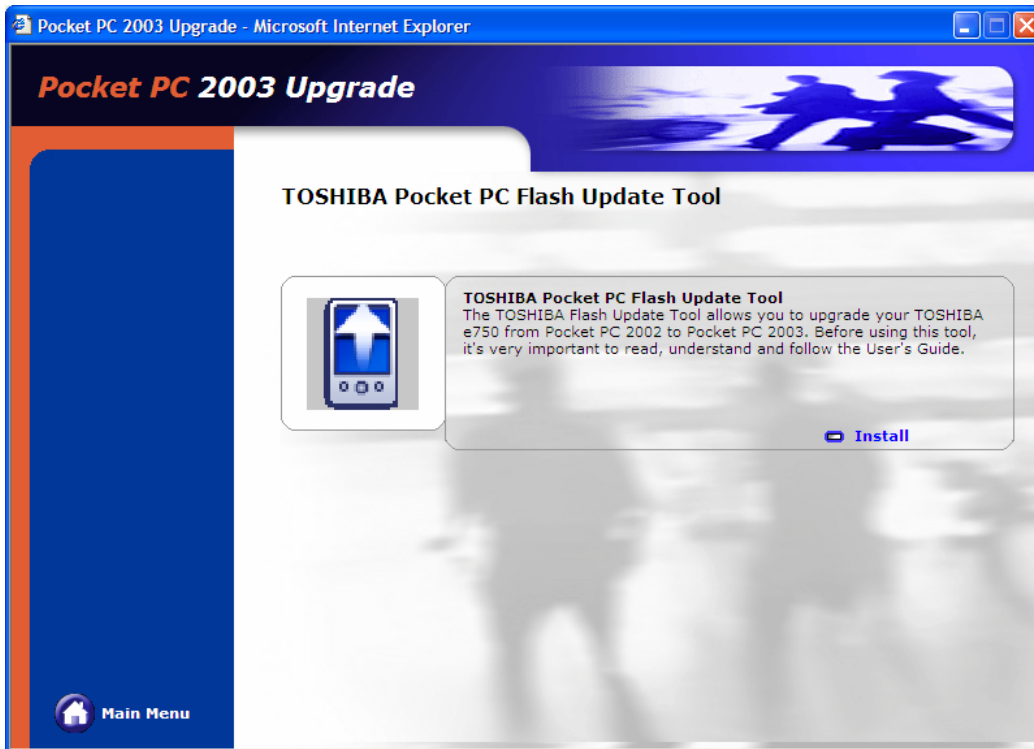
**Getting Started with Your Pocket PC window**

**Step1:** Click the Start button on the Getting Started window.



### Options window

**Step2:** If you want to upgrade your Pocket PC, you can click the “**Pocket PC 2003 Upgrade**” option. If you want to see the **Pocket PC e750 User’s Guide**, please click the “**Learn More**” option.



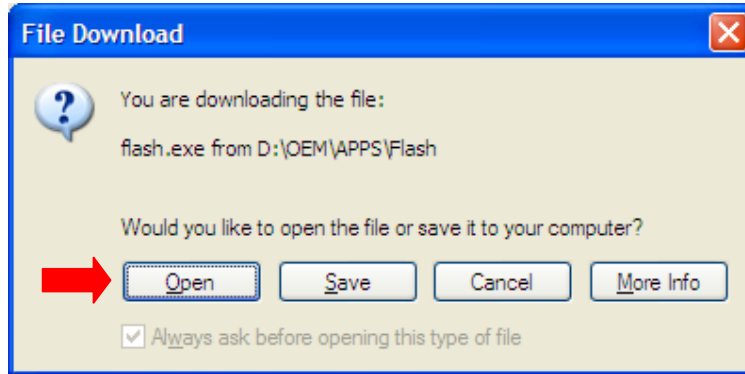
**Desktop Applications window**

**Step3:** After reviewing the User's Guide, click "**Install**". A confirmation message displays.



**Installation Confirmation Message**

**Step4:** Click ok. A File Download message displays.



### File Download Message

Step5: Click “**Open**” and follow the steps outlined in the User’s Guide for your device.

### How to get Pocket PC e750 User’s Guide



### Desktop Applications window

StepB-1: Click the “**TOSHIBA**” option.



### Desktop Applications window

StepB-2: Click the “**TOSHIBA Pocket PC e750/e755 User’s Guide**”. You will see the “TOSHIBA Pocket PC e750/e755 User’s Guide”.

## Upgrading the Device

---

**▲WARNING** *Follow these instructions closely to ensure that your device works properly.*

---

To upgrade your TOSHIBA e750 from Pocket PC 2002 to Pocket PC 2003 you will need to:

- ▶ Prepare for the ROM update.
- ▶ Update the ROM.
- ▶ Reconnect your e750 to your PC using ActiveSync.

### Preparing the ROM for Update

To prepare the ROM for update to Pocket PC 2003:

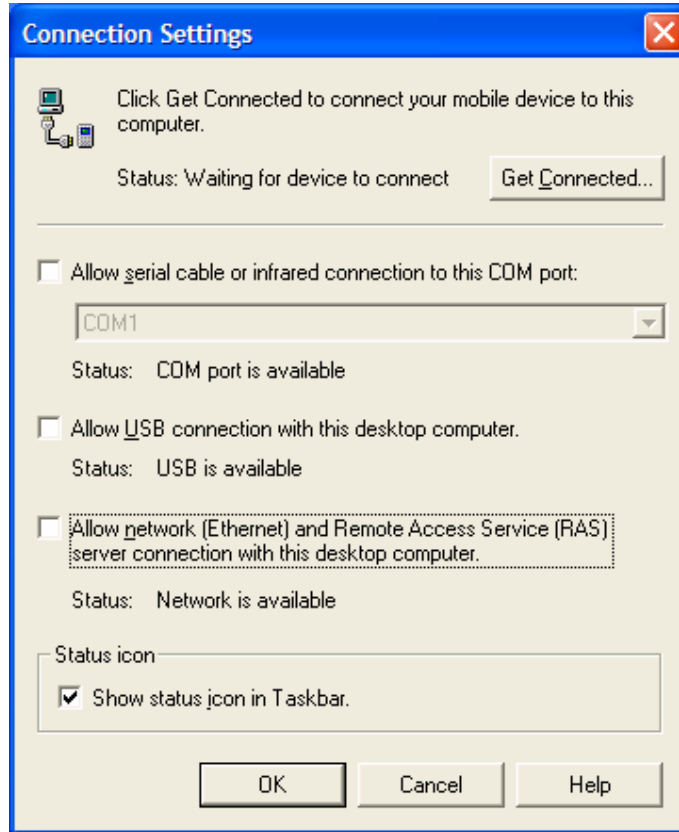
- 1 Upgrade ActiveSync to version 3.7**
- 2 Make sure the AC adapter is attached to the cradled e750.**  
A power loss during the ROM update process will damage your e750.
- 3 Back up your data**
  - Backup all files stored in My Documents by copying them to your PC hard disk or to a storage card.
  - Synchronize your PIM data (i.e. Inbox, Calendar, Tasks, and Contacts) with your PC Outlook.

---

**▲WARNING** *DO NOT – use the “DataBackup” program to backup and restore your data, Pocket PC 2002 data can not be restored in Pocket PC 2003.*

---

- 4** Remove all Compact Flash (CF) and Secure Digital (SD) cards from the device.
- 5** Disable the ActiveSync Connection. On your PC, open **ActiveSync**, then select **File**, then **Connection Settings**, and uncheck the first three option checkboxes.



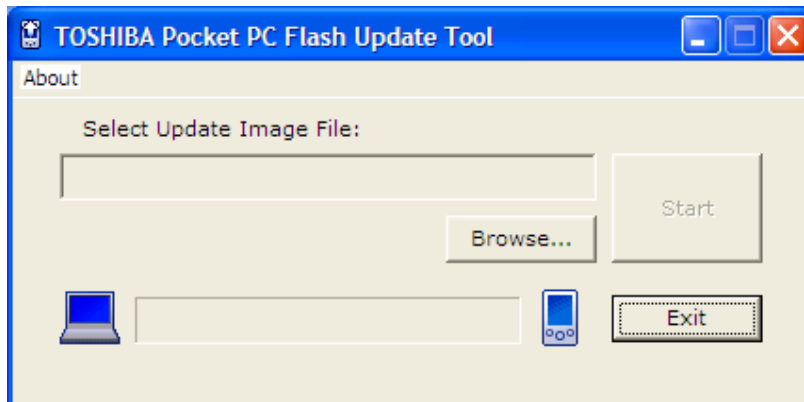
ActiveSync Connection Settings

- 6 Click **OK**.
- 7 Remove the e750 from its cradle

## ROM Update

To start the ROM update:

- 1 Start the Flash Update Tool by double-clicking 





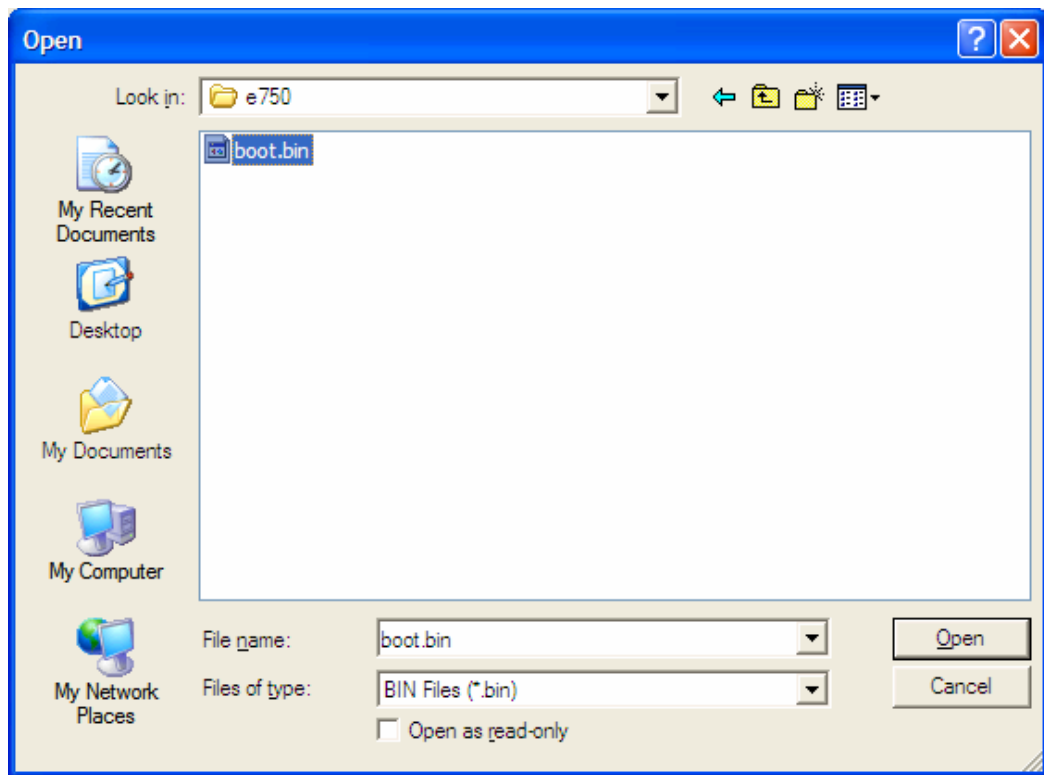
## USB Flash Tool

- 2 Click the **Browse** button and select \*.bin files from the Files of type drop-down list.
  - ▶ Boot ROM file: CDROM:\Oem\Apps\Flash\image\**boot.bin**
  - ▶ Kernel ROM file: CDROM:\Oem\Apps\Flash\image\**xip.bin**

---

**WARNING** The **Boot ROM file (boot.bin)** **must** be installed **BEFORE** the **Kernel ROM file (xip.bin)**

---



Selecting the ROM image window

- 3 Press and hold the **Button 2** and **3 (Tasks and Home)** simultaneously. While holding them down, use the stylus to press the **Reset** Button.



### Resetting the e750

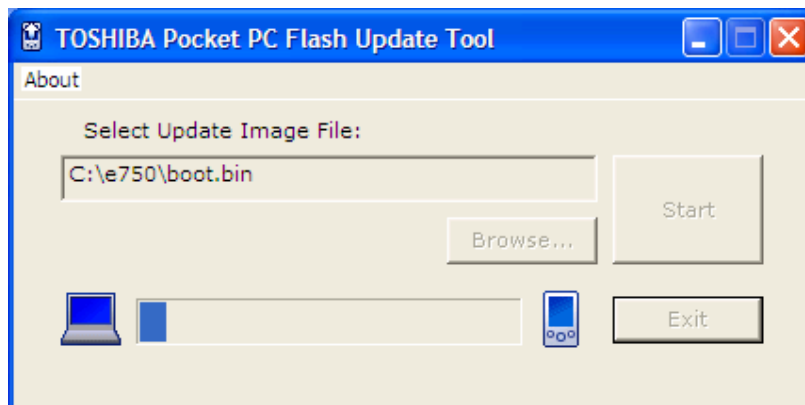
The message “**Image Download via PPFS**” will display at the bottom of the screen.

**4 Insert the e750 into its cradle**

The message “**Begin download over USB now**” displays.

- 5** On your PC, press **Start** on the Flash Update Tool, and then choose **Yes** to confirm the prompts.

The progress bar on the Flash Update Tool will indicate the update progress.



### Updating the e750 ROM Progress Bar

- 6 When the update completes, your e750 will automatically re-boot
- 7 Remove the device from the cradle.
- 8 And click **Exit** on the Flash Update Tool.
- 9 Install the Kernel ROM image file by repeating steps 2-8.
- 10 When you complete the installation of both the Boot ROM and Kernel ROM, cold boot your e750 again and then proceed to next section.

---

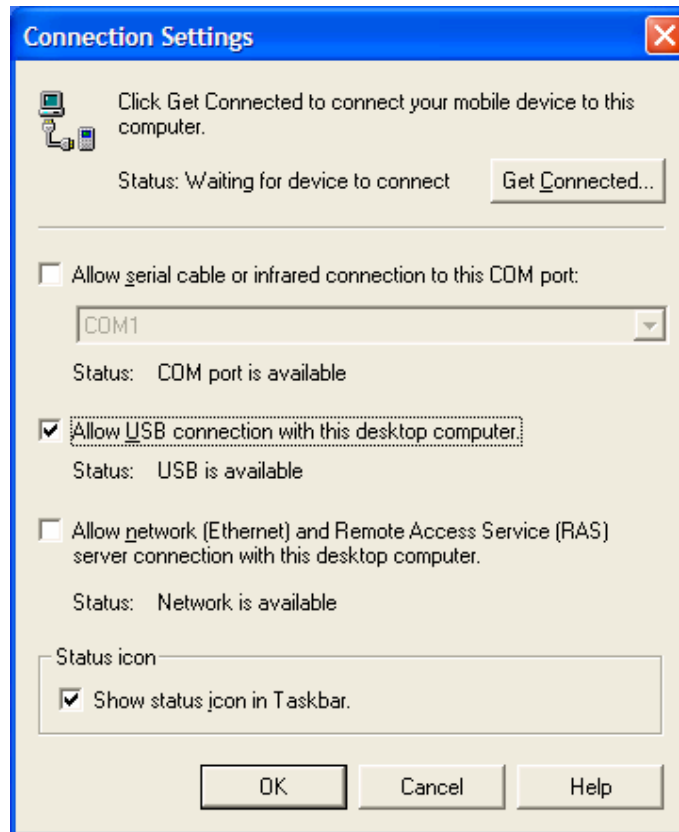
**▲WARNING** *When you update the ROM image and an error occurs, finish the update and then reset the PDA.*

---

## Reconnecting to your PC

To reconnect the device to your PC:

- 1 On your PC, open **ActiveSync**, and then choose **File**, and then **Connection Settings**,
- 2 Click the **Allow USB connection** checkbox, and then click **OK**.



Getting connected window

Insert the e750 into the cradle and make sure here is a good connection to

your PC. If there is no connection, remove the e750 from the cradle and insert it again.

- 3 You will be prompted to set up a partnership. You can select **Standard Partnership** to synchronize your PIM data as you did with Pocket PC 2002, or select **Guest Partnership** to copy or move files between your Pocket PC device and your PC.