

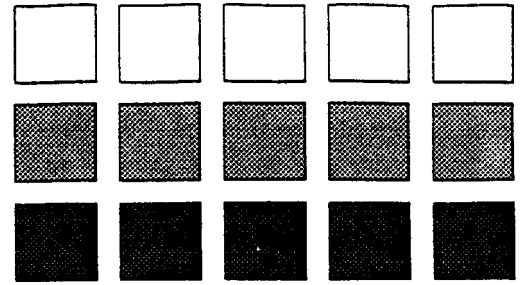
Panasonic®

DBS

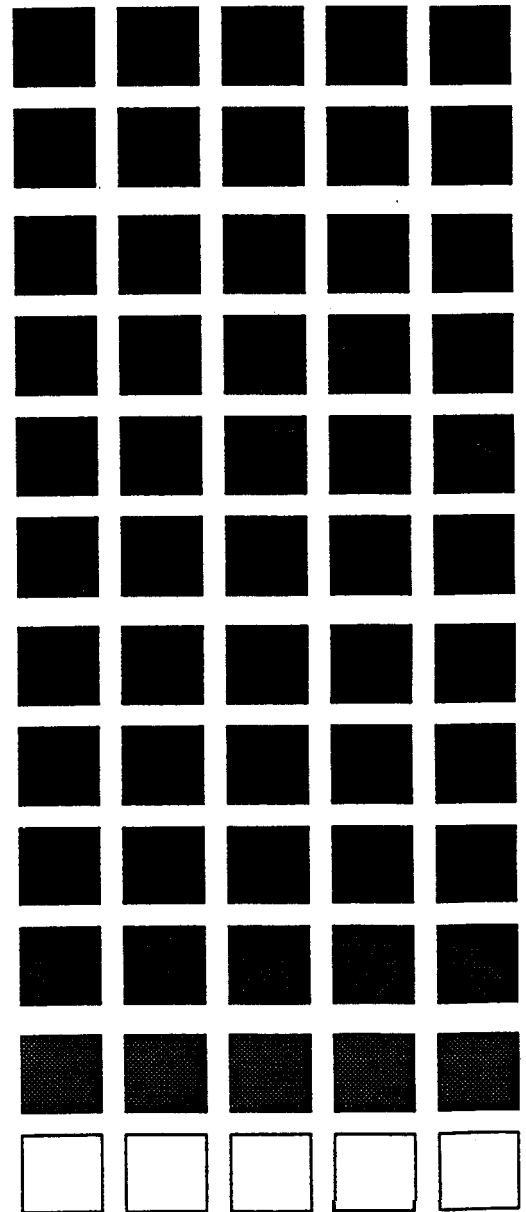
Digital Business System



Supports CPC-All/B 8.0
and CPC-EX 1.0



Section 450 Programming Forms and Tables



Doc. No. 550:X07801A
issued 6/28/96

The information contained in this document is subject to change without notice and should not be construed as a commitment by Panasonic Information and Communications Company (PICC). PICC reserves the right, without notice, to make changes to equipment design as advances in engineering and manufacturing methods warrant.

The software and hardware described in this document may be used or copied only in accordance with the terms of the license pertaining to said software or hardware.

The forms in this manual may be reproduced as needed by certified dealers and technicians of DBS products.

@Copyright 1996 by Panasonic Information and Communications Company

All rights reserved.

Table of Contents

Introduction.....	5
Section 1 - System Settings (FF1)	6
System Parameters (Part I).....	6
Extension Class Of Service	9
Verified Forced Account Codes.....	10
Custom Large LCD Screen Assignments	11
Caller ID Automatic DISA	12
Door Phones	12
System Parameters (Timers/Access Codes).....	13
DID/DNIS Assignments	18
Section 2 - Trunk Settings (FF2).....	19
Trunk Programming.....	19
Section 3 - Extension Settings (FF 3).....	21
Extension Programming Features	21
Section 4 - Ringing and Hunt Groups (FF4)	25
Trunk to Extension Ring Assignments	25
Trunk to Hunt Group Ring Assignments.....	26
Hunt Group Assignments.....	27
Call Coverage Group Member.....	28
Extension Ring (BLF) Table.....	29
Section 5 - FF Key Programming (FF5)	30
FF Key Assignment for Extension Ports	30
DSS Key Telephone Assignments	31
EM/24 Key Assignments	35
Section 6 - Name and Message Assignments (FF6)	39
Extension Names	39
System Speed Dials.....	40

Personal Speed Dials	41
Absence Messages	41
Trunk Name Assignments	42
Hunt Group Name Assignment.....	44
Call Waiting/OHVA Text Reply	44

Section 7 - Toll Restriction Settings (FF7) 45

TRS Settings	45
TRS Restrictions for Extension Ports	46
TRS Country 'Codes Allowed	47
TRS Office Code Restrictions for Types 2-6.....	47
7-Digit Toll Restriction for TRS Types 2-6.....	48
Special 7-Digit Table for TRS Types 2-6	48
Day/Night TRS Types for Trunk	49
Special Area Code Table for TRS Types 3-6	50
TRS Area Code/Office Code Table (000-249)	51
TRS Area Code/Office Code Table (250-499)	52
TRS Area Code/Office Code Table (500-749)	53
TRS Area Code/Office Code Table (750-999)	54

Section 8 - Least Cost Routing (FF 8) 55

LCR Trunk Group Assignments	55
Time Priority Route Table 1-8 (Periods 1-24)	56
Time Priority Route Table 1-8 (Periods 25-48)	57
Time Priority Route Table 9-15 (Periods 1-24)	58
Time Priority Route Table 9-15 (Periods 25-48).....	59
LCR Area Code/Office Code Table (000-249).....	60
LCR Area Code/Office Code Table (250-499).....	61
LCR Area Code/Office Code Table (500-749).....	62
LCR Area Code/Office Code Table (750-999).....	63
Special LCR Area Code Table.....	64
Special LCR Office Code Table)	64

Introduction

This document contains the DBS Programming Forms and Tables for **CPC-AII/B** up to Version 8.0 and CPC-EX 1.0. These tables are useful in planning and configuring a DBS Installation.

These tables are organized as follows:

- Section 1 - System Settings (**FF1**)
- Section 2 - Trunk Settings (FF2)
- Section 3 - Extension Settings (**FF 3**)
- Section 4 - Ringing and Hunt Groups (FF4)
- Section 5 - FF Key Programming (FF5)
- Section 6 - Name and Message Assignments (FF6 and **FF10**)
- Section 7 - Toll Restriction Settings (**FF7**)
- Section 8 - Least Cost Routing (FF **8**)

The programming forms and tables are in the **same** general order as the programming telephone programming **structure**. *However, some tables are combined to group related information.* For instance, the Personal Speed Dial names (FF6 **3#**) and Speed Dial numbers (**FF10 2#**) are recorded on the same table (see Table 21). Also, *some items in the tables may be moved to group related information.* For instance, the System Settings for the Attendant Timers are grouped together; not in programming order.

For ease of reference, a limited number of programming items are referenced in more than one place. Be **sure** to write the same value in each place. For instance, the Hunt Group No Answer Timer setting appears with system parameters and also in the Hunt Group Assignment Table.

When space permits, the related programming address is listed with the item. In some cases, the programming address is listed above or below the table.

Some tables show the possible settings including the default settings. The defaults are indicated in bold type. In some cases, the possible settings are too extensive to list in the tables. This is especially true for the system timing parameters. Most of the parameters with unlisted settings do not need to be changed from the default. If a change is required, refer to the DBS Section 400.

In many cases, the actual programming telephone entry is a 0 or 1 with the meaning determined by the item. These are usually listed in parentheses to the right of the possible settings in the tables.

Do not write on the originals! Instead make copies. Several tables are used repeatedly and may need to be copied multiple times.

Section 1 - System Settings (FF1)

Table 1: System Parameters (Part 1)

PARAMETER	POSSIBLE ENTRY	ADDRESS	SETTING
General System Settings (FF12# 1#)			
Call Duration Display	Not Displayed (0), Display (1)	FF1 2# 1# 1#	
SMDR Start Timer for CO Calls	5 sec. (0), 16 sec. (1) or 30 sec. (2)	FF1 2# 1# 2#	
Least Cost Routing (LCR) Access	Pooled-trunk call (0), LCR call (1)	FF1 2# 1# 3#	
Override Toll Restrict with SSD No.	00 - 89,000 thru 199. or 000 thru 499	FF1 2# 1# 4#	
SSD Display Restriction	SSD(80-89, 160-199, or 400-499) dialed digits displayed (0) SSD(80-89, 160-199, or 400-499) dialed digits not displayed (1)	FF1 2# 1# 5#	
Auto Flash Redial	Redial does not send flash (0), Redial sends flash (1)	FF1 2# 1# 6#	
One Touch Dial	Disabled (0), Enabled (1)	FF1 2# 1# 7#	
Onhook Transfer	Disabled (0), Enabled (1)	FF1 2# 1# 8#	
Key Bank Hold	Disabled (0), Enabled (1)	FF1 2# 1# 9#	
Non-Appearing Trunk Hold	Exclusive hold (0), System hold (1)	FF1 2# 1# 10#	
SLT Flash Control	2nd SLT hookflash results in intercom dial tone (0) 2nd SLT hookflash results in held call (1)	FF1 2# 1# 11#	
Extension Number Digits	2-digit numbers (0), 3-digit numbers (1), 4-digit numbers (CPC-EX In Network Only) (2)	FF1 2# 1# 12#	
Alternate Attendant	Disable Alternate Attendant (0) Enable Alternate Attendant (1)	FF1 2# 1# 13#	
Attendant Intercom Calling	Ring tone calling (0), Voice Calling (1)	FF1 2# 1# 14X	
Extension Intercom Calling	Tone Calling (0), Voice Calling (1)	FF1 2# 1# 15#	
Alert Tone for Voice Calls	Disabled (0), Enabled (1)	FF1 2# 1# 16#	
Alert Tone - Busy Override and OHVA	Disabled (0), Enabled (1)	FF1 2# 1# 17	
System Installation Area Code	1 not required before long-distance call (0) 1 required before long-distance call (1)	FF1 2# 1# 18#	
SSD Name Display	Display 5 SSD names (0), Display 10 SSD Names (1)	FF1 2# 1# 19X	
API/SLT Assignment	Analog Extension Slot (2-18)	FF1 2# 1# 20#	
Voice Mail Busy Tone	Silence (0), Busy Tone (1)	FF1 2# 1# 21#	
Analog Transfer Ring Pattern	See Section 400 (4 on / 3.6 off - 0)	FF1 2# 1# 22#	
Delayed Ring	Disabled (0), Enabled (1)	FF1 2# 1# 23#	
Second Attendant Position	Extension Number (101)	FF1 2# 1# 24#	
Third Attendant Position	Extension Number (***) No entry	FF1 2# 1# 25#	
Fourth Attendant Position	Extension Number (***) No entry	FF1 2# 1# 26X	
Attendant Transfer Extension	Extension Number (***) No entry	FF1 2# 1# 27X	
Attendant Override	Disabled (0), Enabled (1)	FF1 2# 1# 28#	
Attendant LED Alarm Indication (Attendant Feature Package Only)	Alarm feature can be assigned (0) Alarm feature can be assigned (1)	FF1 2# 1# 29#	

Table 1: System Parameters (Part 1)

PARAMETER	POSSIBLE ENTRY	ADDRESS	SETTING
Extension (BLF) Delayed Ring	Off (0), On (1)	FF1 2# 1# 30#	
Transfer Ring Pattern	See Section 400 (.25 on/.25 off/.25 on/3.5 off - 0)	FF1 2# 1# 31#	
Multiple DID/DNIS	Disables Multiple DID/DNIS ringing (0) Enables Multiple DID/DNIS ringing (1)	FF1 2# 1# 32	
Page Duration	Page Circuit Remains Open (0), Open 60 sec. (1)	FF1 2# 1# 33#	
SLT DISA Ring Pattern	1 second on/ 3.0 seconds off (0) Same as CO Transfer ring pattern (1)	FF1 2# 1# 34#	
AEC Disconnect Duration	See Section 400 (No signal sent = 0)	FF1 2# 1# 35#	
DID/DNIS to a Voice Mailbox	No DID/DNIS digits transmitted (only answer code) (0), Answer Code, then final 4 DID/DNIS digits transmitted (1), Answer Code, then final 3 DID/DNIS digits transmitted (2)	FF1 2# 1# 36#	
DID/DNIS Answer Code	Up to 6 characters including 0-9, *, #, or pause (REDIAL)	FF1 2# 1# 37#	
Call Duration Timer	5 sec.(0), 16 sec. (1), 30 sec. (2)	FF1 2# 1# 38#	
Internal Hold Tone	Disabled (0), Enabled (1)	FF1 2# 1# 39#	
Door Opener Access Code Required	Access Code not required (0), Access Code required (1)	FF1 2# 1# 40#	
API Port 1 Port Type	Standard API protocol (0), TSAPI protocol (1)	FF1 2# 1# 41# 1#	
API Port 1 Baud Rate	9600 bps (0), 19200 bps (1)	FF1 2# 1# 41# 2#	
API Port 2 Port Type	Standard API protocol (0), TSAPI protocol (1)	FF1 2# 1# 42# 1#	
API Port 2 Baud Rate	9600 bps (0), 19200 bps (1)	FF1 2# 1# 42# 2#	
SMDR/Maintenance Data (Serial Ports) (FF1 2# 2#)			
Parity Check (SMDR)	Off (0), On (1)	FF1 2# 2# 1#	
Odd/Even Parity (SMDR)	Odd (0), Even (1)	FF1 2# 2# 2#	
Baud Rate (SMDR)	300 (1), 1200 (2), 2400 (3), 9600 (4)	FF1 2# 2# 3#	
Stop Bit Length (SMDR)	1 bit (1), 1.5 bit (2), 2 bits (3)	FF1 2# 2# 4#	
Data Length (SMDR)	7 bits (3), 8 bits (4)	FF1 2# 2# 5#	
SMDR Printing Mode 1: Outbound and Inbound	Outbound Only (0), Inbound and Outbound (1), Inbound, Outbound and Networking (2)	FF1 2# 2# 6#	
SMDR Printing Mode 2: Long-Distance and Local Calls	Long Distance Only (0), Local and Long Distance (1)	FF1 2# 2# 7#	
SMDR Printing Mode 3:Header Title	Off (0), On (1)	FF1 2# 2# 8#	
Serial Port Flow Control (Xon/Xoff)	Disable Xon/Xoff (0), Enable XonXoff (1)	FF1 2# 2# 9#	
RAI Baud Rate	300 bps (0), 1200 bps (1)	FF1 2# 2# 10#	
Parity Check (Maint, CPC-EX)	Off (0), On (1)	FF1 2# 2# 11#	
Odd/Even Parity (Maint, CPC-EX)	Odd (0), Even (1)	FF1 2# 2# 12#	
Baud Rate (Maint, CPC-EX)	300 (1), 1200 (2), 2400 (3), 9600 (4)	FF1 2# 2# 13#	
Stop Bit Length (Maint, CPC-EX)	1 bit (1), 1.5 bit (2), 2 bits (3)	FF1 2# 2# 14#	
Data Length (Maint, CPC-EX)	7 bits (3), 8 bits (4)	FF1 2# 2# 15#	

Table 1: System Parameters (Part 1)

PARAMETER	POSSIBLE ENTRY	ADDRESS	SETTING
PBX Settings (FF12#3#)			
PBX Access Code 1	Access Code (up to 3 digits)(*** - No Entry)	FF1 2# 3x 1#	
PBX Access Code 2	Access Code (up to 3 digits)(*** - No Entry)	FF1 2x 3x 2#	
PBX Access Code 3	Access Code (up to 3 digits)(*** - No Entry)	FF1 2x 3x 3#	
PBX Access Code 4	Access Code (up to 3 digits)(*** - No Entry)	FF1 2# 3# 4#	
PBX Access Code 5	Access Code (up to 3 digits)(*** - No Entry)	FF1 2# 3# 5#	
PBX Access Code 6	Access Code (up to 3 digits)(*** - No Entry)	FF1 2# 3# 6#	
PBX Access Code 7	Access Code (up to 3 digits)(*** - No Entry)	FF1 2# 3# 7#	
PBX Access Code 8	Access Code (up to 3 digits)(*** - No Entry)	FF1 2# 3# 8#	
Automatic Pause Position for PBX Access Codes beginning with 1	Pause after 1st digit (1), pause after 2nd digit (2), pause after 3rd digit (3)	FF12# 3X 9#	
Automatic Pause Position for PBX Access Codes beginning with 2	Pause after 1st digit (1), pause after 2nd digit (2), pause after 3rd digit (3)	FF12#3# 1 0#	
Automatic Pause Position for PBX Access Codes beginning with 3	Pause after 1st digit (1), pause after 2nd digit (2), pause after 3rd digit (3)	FF1 2# 3# 11#	
Automatic Pause Position for PBX Access Codes beginning with 4	Pause after 1st digit (1), pause after 2nd digit (2), pause after 3rd digit (3)	FF12# 3#12X	
Automatic Pause Position for PBX Access Codes beginning with 5	Pause after 1st digit (1), pause after 2nd digit (2), pause after 3rd digit (3)	FF1 2# 3#13#	
Automatic Pause Position for PBX Access Codes beginning with 6	Pause after 1st digit (1), pause after 2nd digit (2), pause after 3rd digit (3)	FF12# 3114X	
Automatic Pause Position for PBX Access Codes beginning with 7	Pause after 1st digit (1), pause after 2nd digit (2), pause after 3rd digit (3)	FF1 2# 3# 15#	
Automatic Pause Position for PBX Access Codes beginning with 8	Pause after 1st digit (1), pause after 2nd digit (2), pause after 3rd digit (3)	FF12# 3# 16X	
Automatic Pause Position for PBX Access Codes beginning with 9	Pause after 1st digit (1), pause after 2nd digit (2), pause after 3rd digit (3)	FF1 2# 3# 17#	
Automatic Pause Position for PBX Access Codes beginning with 0	Pause after 1st digit (1), pause after 2nd digit (2), pause after 3rd digit (3)	FF1 2# 3# 18#	
Ring Patterns for UNA Terminals (MI, CI, & B1)	Intermittent; 1 sec. on, 3 sec. off (0) Continuous (1)	FF1 2# 4# 1#	
External Page interface Control for Paging Group 0	No External Page and Relay Operation (0), External Page and Relay Operation (1)	FF1 2# 4# 2#	
External Page Interface Control for Paging Group 1	No External Page and Relay Operation (0), External Page and Relay Operation (1)	FF1 2# 4# 3X	
External Page interface Control for Paging Group 2	No External Page and Relay Operation (0), External Page and Relay Operation (1)	FF12# 4# 4#	
External Page Interface Control for Paging Group 3	No External Page and Relay Operation (0), External Page and Relay Operation (1)	FF1 2# 4# 5#	
External Page Interface Control for Paging Group 4	No External Page and Relay Operation (0), External Page and Relay Operation (1)	FF1 2# 4# 6#	

Note: Make certain that features are not in use before disabling. Some features that are disabled from the **Class** of Service while in use cannot be **cancelled** (for example, if BGM is removed from COS while in use, BGM cannot be turned off).

Table 2: Extension Class of Service

Extension Feature (Default is Disabled - 0)	Class of Service # (FF1 2# 5# (1-8)# (1-21)#)							
	1	2	3	4	5	6	7	8
Dial Tone On/Off (#50) FF1 2# 5# (COS)# 1# (0/1)#								
Head/Handset Exchange (#51) FF12# 5# (COS)# 2# (0/1)#								
BGM On/Off (#53) FF12# 5# (COS)# 3# (0/1)#								
AbsenceMessageSet/Reset (71) FF1 2# 5# (COS)# 4# (0/1)#								
Call ForwardSet/Reset (72) FF1 2# 5# (COS)# 5# (0/1)#								
Do Not Disturb (73) FF1 2# 5# (COS) 6# (0/1)#								
Station Lockout (74) FF12# 5# (COS) # 7# (0/1)#								
Park Hold (75) FF12# 5# (COS)# 8# (0/1)#								
Park Pickup (76) FF1 2# 5# (COS)# 9# (0/1)#								
Meet Me Answer (77) FF1 2# 5# (COS)# 10# (0/1)#								
UNA Pickup (78) FF1 2# 5# (COS)# 11# (0/1)#								
Direct Pickup (79) FF1 2# 5# (COS)# 12# (0/1)#								
GroupPickup (70) Al 2# 5# (COS)# 135 (0/1)#								
Tone/VoiceMode(1) FF1 2# 5# (COS) 14# (0/1)#								
Message Waiting Set(2) FF1 2# 5# (COS)# 15# (0/1)#								
BusyOverride (4) FF1 2# 5# (COS)# 16# (0/1)#								
Call Waiting (3) FF1 2# 5# (COS)# 17# (0/1)#								
Offhook Voice Announce (5) FF1 2# 5# (COS)# 18# (0/1)#								
Central Office Call Queuing (2) FF12x 5# (COS)# 19# (0/1)#								
SLT Transfer (8) FF1 2# 5# (COS)# 20# (0/1)#								
Call Forwarding -External FF1 2# 5# (COS)# 21# (0/1)#								

Table 3: Verified Forced Account Codes

Entry	4-Digit Account Code* (0001-9999)	TRS Type (0-7)**	Entry	4-Digit Account Code* (0001-9999)	TRS Type (0-7)**	Entry	4-Digit Account Code* (0001-9999)	TRS Type (0-7)**	Entry	4-Digit Account Code* (0001-9999)	TRS Type (0-7)**
1			26			51			76		
2			27			52			77		
3			28			53			78		
4			29			54			79		
5			30			55			80		
6			31			56			81		
7			32			57			82		
8			33			58			83		
9			34			59			84		
10			35			60			85		
11			36			6.1			86		
12			37			62			87		
13			38			63			88		
14			39			64			89		
15			40			65			90		
16			41			66			91		
17			42			67			92		
18			43			68			93		
19			44			69			94		
20			45			70			95		
21			46			71			96		
22			47			72			97		
23			48			73			98		
24			49			74			99		
25			50			75			100		

*Verified Forced Account Code -- FF1 2# 6# (Entry 1-100)# 1# (0001-9999)#

**TRS Type for Verified Forced Account Code -- FF1 2# 6# (Entry 1-100)# 2# (0-7)#. Note that TRS types 0 and 1 do not allow outgoing calls.

These forms may be reproduced as needed by certified DBS Dealers and Technicians.

Key 1	●	DND	●	OVERRIDE	●	Key 6
Key 2	●	BGM	●	TALKBACK	●	Key 7
Key 3	●	MUTE	●	PSD	●	Key 8
Key 4	●	FORWARD	●	SSD	●	Key 9
Key 5	●	CONF	●	LOCKOUT	●	Key 10

Table 4: Custom Large LCD Screen Assignments

Screen Number _____ (2539)					
Soft Key #	Feature Code FF1 2# 7# 1# (25-39)# (Soft Key)# (Code)#	Text FF1 2# 7# 2# (25- 39)# (Soft Key)# (Text)#	Soft Key #	Feature Code FF1 2# 7# 1# (25-39)# (Soft Key)# (Code)#	Text FF1 2# 7# 2# (25- 39)# (Soft Key)# (Text)#
1			6		
2			7		
3			8		
4			9		
5			10		

Screen Number _____ (25-39)					
Soft Key #	Feature Code FF1 2# 7# 1# (25-39)# (Soft Key)# (Code)#	Text FF1 2# 7# 2# (25- 39)# (Soft Key)# (Text)#	Soft Key #	Feature Code FF1 2# 7# 1# (25-39)# (Soft Key)# (Code)#	Text FF1 2# 7# 2# (25- 39)# (Soft Key)# (Text)#
1			6		
2			7		
3			8		
4			9		
5			10		

Table 5: Cailer ID Automatic DISA

Phone Number Assignment	Phone Number (Max. 10 Digits)
1 - FF1 2# 8# 1# (Phone No.)#	
2 - FF1 2# 8# 2# (Phone No.)#	
3 - FF1 2# 8# 3# (Phone No.)#	
4 - FF1 2# 8# 4# (Phone No.)#	
5 - FF1 2# 8# 5# (Phone No.)#	
6 - FF1 2# 8# 6# (Phone No.)#	
7 - FF1 2# 8# 7# (Phone No.)#	
8 - FF1 2# 8# 8# (Phone No.)#	
9 - FF1 2# 8# 9# (Phone No.)#	
10 - FF1 2# 8# 10# (Phone No.)#	

Table 6: Door Phones

	Door Phone 1	Door Phone 2	Door Phone 3	Door Phone 4
Door Phone Extension Port Number FF1 2# 9# (Door Phone #1-4)# 1# (3-144)				
Ring on Extension Port(s) . FF1 2# 9# (1-4)# 2# (1-144)# (0 or 1)#				
Door Opener Access Code (Default -9999) FF1 2# 9# (1-4)# 3# (0000-9999)#				
Door Phone Tone Type (Slow Chime - 0, Fast Chime - 1) FF1 2# 9# (1-4)# 4# (0 or 1) #				
Door Phone Ring Time-out (20 sec. - 3) FF1 2# 9# (1-4)# 5# (0-15)#				
Door Phone Ring Pattern (4 sec. between rings - 1) FF1 2# 9# (1-4)# 6# (0-5)#				
Door Opener Relay Timer (4 sec. - 1) FF1 2# 9# (1-4)# 7# (0-5)#				

Note:

See also “Door Opener Access Code Required” setting (FF1 2# 1# 40#) on page 3.

Table 7: System Parameters (Timers/Access Codes)

	PARAMETER	POSSIBLE ENTRY	PROGRAM	SETTING	
System Timers	System Timers (FF1 3#)				
	Auto Day Mode Start Time	Start Time (in 24-hour format) (****)	RI 3# 29# (0000-2359)P		
	Auto Night 1 Mode Start Timer	Start time (in 24 hour format) (****)	FF13# 1# (0000-2359)#		
Attendant Timers	Auto Night 2 Mode Start Time	Start Time (in 24-hour format) (****)	RI 3# 30# (0000-2359)#		
	Attnd Hold Recall Timer for CO Calls	See Section 400, (20 sec. - 1)	FF 13#2# (0-12)#		
	Attnd Transfer Recall Timer for CO Calls	See Section 400, (20 sec. - 1)	RI 3# 4# (0-1 2)#		
	Attnd Park Hold Recall Timer	See Section 400, (20 sec. -1)	FF13# 8# (0-1 2)#		
	Attnd Call Reversion Timer	See Section 400, (190 sec. - 9)	FF13# 1 0# (0-1 2)#		
	Attnd Hold Recall Timer for Intercom Calls	See Section 400. (40 sec. - 2)	FF 13#22# (0-12)#		
	Attnd Transfer Recall Timer for Intercom Calls	See Section 400. (20 sec. - 1)	FF13% 24# (0-1 2)#		
	Attnd Hunt Group Recall Timer	See Section 400, (20 sec. - 1)	FF 1 3# 61 (0-1 2)#		
	Extension Timers	Ext Hold Recall Timer for CO Calls	See Section 400, (140 sec. - 7)	FF13# 3# (0-1 2)#	
		Ext Transfer Recall Timer for CO Calls	See Section 400, (140 sec. - 7)	FF13# 5# (0-1 2)X	
Ext Park Hold Recall Timer		See Section 400, (140 sec. - 7)	AI 3# 8# (0-1 2)#		
Ext Delayed Ring Timer		See Section 400, (12 sec. - 2)	FF13# 27X (0-1 5)#		
Ext Hold Recall Timer for Intercom Calls		See Section 400, (140 sec. - 7)	FF13# 23# (0-1 2)#		
Ext Transfer Recall Timer for Intercom Calls		See Section 400, (140 sec. - 7)	FF13# 25# (0-1 2)#		
Ext Hunt Group Recall Timer		See Section 400, (140 sec. - 7)	FF13# 7# (0-1 2)#		
Unsupervised Conference Timer		See Section 400, (10 min. - 2)	FF13# 1 1# (0-1 5)#		
Automatic Pause Timer		See Section 400, (3.5 sec. - 7)	FF13# 12# (0-1 5)#		
CO Flash Timer		See Section 400. (1 sec. - 9)	FF13# 13# (0-1 5)X		
System Timers	SLT Onhook Flash Timer	See Section 400, (200 to 1500 ms - 4) (Power down and restart the system after changing this parameter)	FF13# 14# (0-6)#		
	CO Ring Cycle Detection Timer	4 sec. (0), 6 sec. (1), 8 sec (2), 10 sec (3)	FF1 3115X (0-3)#		
	Inbound Ring Cycle Expansion Timer	See Section 400, (350 ms - 7)	FF13% 1 6# (0-1 5)#		
	Dial Pause Timer	See Section 400, (1.5 sec. - 1)	FF13X 17# (0-1 5)#		
	PBX Flash Timer	See Section 400, (.8 sec. - 7)	FF13# 18# (0-1 0)#		
	Call Forward -- No Answer Timer	See Section 400. (12 sec. - 2)	FF13# 19# (0-1 5)#		
	Outbound Ground Start Detection Timer	1-8 sec. (4 sec.)	FF1 3# 20# (1-8)#		

	PARAMETER	POSSIBLE ENTRY	PROGRAM	SETTING
System Timers	Inbound Ground Start Detection Timer	1-8 sec. (4 sec.)	FF13# 21# (1-8)#	
	CO Delayed Ring Timer	See Section 400, (12 sec. - 2)	FF13# 26# (0-16)X	
	Hunt Group No Answer Timer	See Section 400, (12 sec. - 2)	FF13# 28# (0-15)#	
Remote Programming and DISA Codes (FF1 4# through FF1 6#)				
	Remote Programming ID Code	4-digit ID code, (9999)	FF1 45 (0000-9999)#	I
	DISA Inbound Call ID	4-digit ID code	FF1 5X (0000-9999)P	
	DISA Outbound Call ID Code 1	4digit ID code, (1111)	FF16# 1 # (0000-9999)#	
	DISA Outbound Call ID Code 2	4-digit ID code, (9999)	FF16# 2# (0000-9999)#	
Programming Authorization Code (FF1 7#)				
	ID Code for System Programming	4-digit ID code, (9999)	FF1 7# (0000-9999)#	
T1 Settings (CPC-B 4.0 or higher/CPC-EX)				
	System Configuration	See Section 400, (DBS 40 - 0)	FF1 8# 4# 1 # 1# (0-8)#	
	Sync Source 1	T1 master cabinet (1), T1 slave cabinet (2), Free run (internal clock) (3)	FF1 8# 4# 1# 2X (1-3)#	
	Sync Source 2	None (0), T1 master cabinet (1), T1 slave cabinet (2), Free run (internal clock) (3)	FF1 8# 4X 1# 3# (0-3)#	
	Sync Source 3	None (0), T1 master cabinet (1), T1 slave cabinet (2), Free run (internal clock) (3)	FF1 8# 4# 1# 4# (0-3)#	
	Trunk Configuration for master cabinet (CPC-B 4.0 to 6.02)	Analog trunks only (0), T1 and Analog trunks (1)	FF1 8# 4# (4)# 1# 1# (0 or 1)#	
	Number of T1 Channels in master cabinet	0-24, 0 (None)	FF1 8# 4# (4)# 1# 2# (0-24)#	
	Frame Format for master cabinet	Supertrams - 0, Extended Superframe (ESF) - 1	FF1 8# 4# (4)# 1# 3X (0 or 1)#	
T1 Initialization	Frame Format for slave cabinet	Superframe - 0, Extended Superframe (ESF) - 1	FF1 8# 4# (5)# 1# 3# (0 or 1)#	
	Line Coding for master cabinet	AMI (0), B8ZS (1)	FF1 8# 4X (4)# 1# 4# (0 or 1)#	
	Trunk Configuration for slave cabinet (CPC-B 4.0 to 6.02)	Analog trunks only (0), T1 and Analog trunks (1)	FF1 8X 4# (5)# 1# 1# (0 or 1)#	
	Number of T1 Channels in slave cabinet	0-24, 0 (None)	FF1 8# 4# (5)R 1# 2# (0-24)#	
	Line Coding for slave cabinet	AMI (0), B8ZS (1)	FF1 8# 4X (5)# 1X 4# (0 or 1)#	
	T1 Trunk Type Emulation	Loop Start (0), (reserved -1), Ground Start (2), E&M (3), E&M Network (4)	FF1 8# 4X 6X (1-64)# 1# (0-3)#	
	Outgoing Signaling Type	Immediate start (0), Wink Start (1), Dial Tone Start (2)	FF1 8# 4# 6# (1-64)# 3X (0-2)#	
	Incoming Signaling Type	Immediate Start/Ringdown (0), Wink Start (1)	FF1 8X 41 6# (1-64)# 4# (0 or 1)#	

PARAMETER	POSSIBLE ENTRY	PROGRAM	SETTING
Network Re-Sync Timer	Immediate (0), Hourly retries (1-24), No retries (25)	FF1 8# 4# 2# 1# (0-25)#	
Disconnect Timer	See Section 400. (200 ms - 1)	FF1 8# 4# 2# 2# (0-12)#	
Guard Timer	See Section 400, (1200 ms - 6)	FF1 8# 4# 2# 3 X (0-15)#	
Release Acknowledge Timer	See Section 400, (240 sec - 9)	FF1 8# 4# 2# 4# (0-15)#	
Outpulse Delay Timer	See Section 400, (500 ms - 2)	FF1 8# 4# 2# 5# (0-8)#	
Wink Time-out Timer	See Section 400, (5500 ms - 15)	FF1 8# 4# 2 X 6# (0-15)#	
Incoming Detection Timer	See Section 400, (90 ms - 7)	FF1 8# 4% 2# 7# (0-15)#	
Answer Supervision Timer	See Section 400, (600 ms - 3)	FF1 8# 4# 2# 8# (0-8)#	
Immediate Glare Timer	See Section 400, (60 ms - 3)	FF1 8# 4# 2# 9# (0-15)#	
Wink Glare Timer	See Section 400, (60 ms - 3)	FF1 8# 4# 2# 10% (0-15)#	
Digital Pad Settings	See Section 400, (-2 dB - 16)	FF1 8# 4# 3# (1-12)# (1-12)# (0-30)#	Do not change from default without direction from Panasonic Technical support.
Failure Mode for master cabinet	T1 continues to operate after error detected (0), T1 shuts down if errors are detected	FF1 8# 4# (4)# 1# 5# (0 or 1)#	
Remote Loopback for master cabinet	Reserved for future use	FF1 8# 4# (4)X 1# 6# (0 or 1)#	
Yellow Alarm Send for master cabinet	No (0), Yes (1)	FF1 8# 4# (4)X 1# 7# (0 or 1)#	
Flash Key Operation for master cabinet	Release and reseize (0), future use (1)	FF1 8# 4# (4)# 1# 8# (0 or 1)#	
Red Alarm Detection for master cabinet	See Section 400, (6 -2)	FF1 8# 4# (4)# 2# 1 X (0-5)#	
Yellow Alarm Detection for master cabinet	See Section 400, (50 ms - 1)	FF1 8# 4# (4)X 2# 2# (0-15)#	
Yellow Alarm Recovery for master cabinet	See Section 400, (10 ms - 1)	FF1 8# 4# (4)# 2# 3# (0-15)#	
Other Alarms Detection for master cabinet	See Section 400, (250 ms - 1)	FF1 8# 4# (4)# 2 X 4# (0-15)#	
Other Alarms Recovery for master cabinet	See Section 400, (250 ms - 1)	FF1 8# 4# (4)Y 2# 5# (0-15)#	
Frame Loss Counter for master cabinet	0 - 9 0 0 0	FF1 8# 4# (4)# 3# 15 (0-9000)#	
Slip Counter for master cabinet	0-9000	FF1 8# 4# (4)f 3# 2# (0-9000)X	
Red Alarm Counter for master cabinet	0-9000	FF1 8# 4# (4)# 3# 3X (0-9000)#	

These forms may be reproduced as needed by certified DBS Dealers and Technicians.

PARAMETER	POSSIBLE ENTRY	PROGRAM	SETTING
Loss of Signal Counter for master cabinet	0-9000	FF1 8# 4# (4)R 3% 4# (0-9000)#	
Sync Loss Counter for master cabinet	0-9000	FF1 8# 4# (4)# 3# 5# (0-9000)#	
Yellow Alarm Counter for master cabinet	0-9000	FF1 8# 4# (4)# 3# 6# (0-9000)#	
Yellow Alarm Relay for master cabinet	Off (0), On (1)	FF1 8X 4% (4)# 4X 1# (0 or 1)#	
Red Alarm Relay for master cabinet	Off (0), On (1)	FF1 8# 4# (4)# 4# 2# (0 or 1)#	
Sync Loss Relay for master cabinet	Off (0), On (1)	FF1 8X 4# (4)R 4# 3# (0 or 1)#	
Frame Loss Relay for master cabinet	Off (0), On (1)	FF1 8# 4# (4)R 4# 4# (0 or 1)#	
AIS Relay for master cabinet	Off (0), On (1)	FF1 8# 4# (4)R 4# 5# (0 or 1)#	
Relay Reset for master cabinet	Automatically cleared (0) Manually cleared (1)	FF1 8# 4# (4)# 4# 6# (0 or 1)#	
Failure Mode for slave cabinet	T1 continues to operate after error detected (0), T1 shuts down if errors are detected	FF1 8# 4# (5)X 1# 5# (0 or 1)#	
Remote Loopback for slave cabinet	Reserved for future use	FF1 8# 4# (5)# 1# 6# (0 or 1)#	
Yellow Alarm Send for slave cabinet	No (0), Yes (1)	FF1 8# 4# (5)X 1# 78 (0 or 1)#	
Flash Key Operation for slave cabinet	Release and reseize (0), future use (1)	FF1 8# 4# (5)# 1# 8# (0 or 1)#	
Red Alarm Detection for slave cabinet	See Section 400, (9 -2)	FF1 8 X 4# (5)# 2# 1# (0-5)#	
Yellow Alarm Detection for slave cabinet	See Section 400, (50 ms - 1)	FF1 8# 4# (5)# 2# 2# (0-15)#	
Yellow Alarm Recovery for slave cabinet	See Section 400, (10 ms - 1)	FF1 8# 4X (5)# 2% 3# (0-15)#	
Other Alarms Detection for slave cabinet	See Section 400, (250 ms - 1)	FF1 8# 4# (5)R 2# 4# (0-15)Y	
Other Alarms Recovery for slave cabinet	See Section 400, (250 ms - 1)	FF1 8# 4# (5)R 25 5# (0-15)#	
Frame Loss Counter for slave cabinet	0-9000	FF1 8# 4# (5)# 3# 1# (0-9000)#	
Slip Counter for slave cabinet	0-9000	FF1 8# 4# (5)X 3# 2# (0-9000)#	
Red Alarm Counter for slave cabinet	0-9000	FF1 8# 4# (5)# 3# 3# (0-9000)#	
Loss of Signal Counter for slave cabinet	0-9000	FF1 8# 4X (5)# 3# 4# (0-9000)R	
Sync Loss Counter for slave cabinet	0-9000	FF1 8# 4# (5)R 3# 5# (0-9000)X	
Yellow Alarm Counter for slave cabinet	0-9000	FF1 8# 4# (5)# 3# 6# (0-9000)#	

PARAMETER	POSSIBLE ENTRY	PROGRAM	SETTING
Yellow Alarm Relay for slave cabinet	Off (0), On (1)	FF1 8# 4# (5)# 4# 1# (0 or 1)#	
Red Alarm Relay for slave cabinet	Off (0), On (1)	FF1 8# 4# (5)X 4# 2# (0 or 1)#	
Sync Loss Relay for slave cabinet	Off (0), On (1)	FF1 8# 4X (5)# 4# 3# (0 or 1)#	
Frame Loss Relay for slave cabinet	Off (0), On (1)	FF1 8# 4# (5)# 4# 4# (0 or 1)#	
AIS Relay for slave cabinet	Off (0), On (1)	FF1 8# 4# (5)# 4# 5# (0 or 1)#	
Relay Reset for slave cabinet	Automatically cleared (0) Manually cleared (1)	FF1 8# 4# (5)# 4# 6# (0 or 1)#	
Trunk Mode	Incoming and outgoing (0), Outgoing only (1)	FF1 6% 41 6# (1-64)# 5# (0 or 1)#	
Robbed Bit Setting	Robbed Bit Off, Robbed Bit On (1)	FF1 8# 4% 6% (1-64)# 6# (0 or 1)#	
Incoming Dialing Method	1 (DTMF)	FF1 8# 4X 6# (1-64)# 7# (0 or 1)#	
Dial Tone Transmission	Reserved for future use	FF1 8# 4# 6# (1-64)# 8# (0 or 1)#	
Busy Tone Transmission	Reserved for future use	AI 8# 4# 6# (1-64)# 9# (0 or 1)#	
Dial Tone Receive	Off(0), On (1)	A I 8# 4# 6# (1-64)# 10# (0 or 1)#	
Ringback Tone Transmission	Off (0), On (1)	FF1 8# 4# 6# (1-64)# 11# (0 or 1)#	1
T1 Trunk Closure	0 (Open)	FF1 8# 7% (1/2)# (1-4)# (1-8)# (0 or 1)#	

Section 2 - Trunk Settings (FF2)

Table 9: Trunk Programming

	Trunk Port (1-64)							
Trunk Telephone Number (For reference only)								
Name (See Table 25 on page 42 for trunk name assignments)								
Trunk Port Operation (In service - 0, Out of service - 1) FF2 (1-64)# 1# (0/1)#								
DTMF (0)/Pulse (1) FF2 (1-64)# 2#								
Pool Access Group 9 (Not included - 0, Included - 1) FF2 (1-64)# 3# (0/1)#								
Pool Access Group 81 (Not included - 0, Included - 1) FF2 (1-64)# 4# (0/1)#								
Pool Access Group 82 (Not included - 0, Included - 1) FF2 (1-64)# 5# (0/1)#								
Pool Access Group 83 (Not included - 0, Included - 1) FF2 (1-64)# 6# (0/1)#								
Pool Access Group 84 (Not included - 0, Included - 1) FF2 (1-64)# 7# (0/1)#								
Pool Access Group 85 (Not included - 0, Included - 1) FF2 (1-64)# 8# (0/1)#								
Pool Access Group 86 (Not included - 0, Included - 1) FF2 (1-64)# 9# (0/1)#								
Trunk Port Type (CO - 1, PBX - 2) FF2 (1-64)# 10# (0/1)#								
DISA Auto Answer (No - 0, Yes - 1) FF2 (1-64)# 11# (0/1)#								
Private Trunk Line Ext Port # (No default - ****) FF2 (1-64)# 12# (1-144)#								
AutoPause For PBX Line (Enabled - 0, Disabled - 1) FF2 (1-64)# 13# (0-1)#								

Table 9: Trunk Programming

	Trunk Port (I-64)							
Dial Tone Detection (Dial Pause Timer - 0, D. T. Detection - 1) FF2 (1-64)R 146 (0/1)#								
Outbound DTMF Signal (75 ms on /50 ms off - 1 125 ms on/125 ms off - 2 250 ms on/250 ms off - 3) FF2 (1-64)# 15# (1-3)#								
Unsupervised Trunk Cont. (No - 0, Yes - 1) FF2 (1-64)# 16# (0-1)#								
Inbound Ring Pattern (Sync with CO - 0, I-9) FF2 (I-64)R 17# (0-9)#								
Trk Disconn. Detect. Timer (0-15, > 350 ms default - 7) FF2 (1-64)# 18# (0-15)#								
DISA Start Time FF2 (1-64)# 19# (HHMM)#								
DISA End Time FF2 (1-64)# 20# (HHMM)#								
Trunk Circuit Type (LS - 0, Caller ID - 1) FF2 (1-64)# 21# (0/1)#								
DID Immediate or Wink Stat-I (Wink Start - 0, Immed. Start - 1) FF2 (1-64)# 22# (0 or 1)#								
Wink Start Timer (See Section 400, 200 ms - 3) FF2 (1-64)# 23# (0-15)#								
Time Out for Dialed DID Digits (See Section 400, 18 sec. - 4) FF2 (1-64)# 24# (0-15)#								
DID Interdigit Time-out (See Section 400, 80 ms - 5) FF2 (1-64)# 25# (0-15)#								
Trunk Port Class Analog CO trunk - 4 master cabinet T1 -5 slave cabinet T1 -6 Option 1 - 7 Option 2 - 8 FF2 (1-64)# 26# (0-15)#								

Section 3 - Extension Settings (FF 3)

Table 10: Extension Programming Features

Feature	Extension Port # (1 - 144)							
Extension Number FF3 (1-144)# 1# (10-69, 100-699 or N100-N699)# (System defaults to 3 digit numbers. See also Table 21 on page 39.)								
Terminal Type (Usually Automatic, See Section 400) FF3 (1-144)# 2# (1-15)#								
EM/24 Port FF3 (1-144)# 3# (1-144)#								
Forced LCR or LCFUNRS Off (0) or On (1) FF3 (1-144)# 4# (0 or 1)#								
Forced Account Codes None (0), Verified (1) Forced Unverified (2) FF3 (1-144)X 5# (0.1, or 2)X								
Extension Lockout Code (4 digits) (No default - ● ***) FF3 (1-144)# 6# (0000-9999)#								
Offhook Signal (CO) Off (0), On (1) FF3 (1-144)P 7# (0 or 1)#								
Call Waiting/OHVA Off (0), On (1) FF3 (1-144)# 8# (0 or 1)#								
Busy Override Send Cannot barge in (0), can barge in (1) FF3 (1-144)P 9# (0 or 1)#								
Busy Override Receive Cannot receive barge in (0) Can receive barge in (1) FF3 (1-144)# 10# (0 or 1)#								
Prime Line Pickup Off (0), On (1) FF3 (1-144)# 11# (0 or 1)#								
Auto Pickup (Ringing Line) Disabled (0), Enabled (1) FF3 (1-144)P 12# (0 or 1)#								

Table 10: Extension Programming Features

Feature	Extension Port # (1- 144)							
Unsupervised Conference Cannot initiate (0), can initiate (1) FF3 (1-144)# 13# (0 or 1)#								
SMDR Report Exclude (0), include (1) FF3 (1-144)# 14# (0 or 1)#								
OffhookSignal Vol. (0-4, 2 Default) FF3(1-144)# 15# (0-4)#								
OffhookSignal Pattern Repeated burst (0), Single burst(1) FF3(1-144)# 16# (0 or 1) #								
PSD Name Display on Large LCD Phones - 5 names (0), 10 names(1) FF3 (1-144)# 17# (0 or 1)#								
Page Group 0 Member Exclude (0), Include(1) FF3(1-144)# 18# (0 or 1) #								
Page Group 1 Member Exclude (0), Include(1) FF3 (1-144)# 19# (0 or 1)#								
Page Group2 Member Exclude (0), Include (1) FF3 (1-144)# 20# (0 or 1) #								
PageGroup Member Exclude (0), Include (1) FF3(1-144)# 21# (0 or 1) #								
Page Group 4 Member Exclude (0), Include (1) FF3 (1-144)# 22# (0 or 1) #								
Page Group5 Member Exclude (0), Include(1) FF3 (1-144)# 23# (0 or 1)#								
PageGroup Member Exclude(0), Include(1) FF3 (1-144)# 24# (0 or 1) #								
PageGroup 7 Member Exclude (0), Include(1) FF3 (1-144)# 25# (0 or 1) #								

Table 10: Extension Programming Features

Feature	Extension Port # (1 - 144)							
DSLT Receiving Volume Normal (0), Loud (1) FF3 (1-144)# 40# (0 or 1)#								
Auto Set Relocation Code (4 digits) FF3 (1-144)# 41# (0001-9999)#								
Permanent Call Forward Type Off (0) (Displays as *) , Busy/No Answer (1), Busy (2), No Answer (3) FF3 (1-144)# 42# (0-3)#								
Permanent Call Forward Extension Default= ● ***no extension assigned FF3 (1-144)#43#(1 0-69 or 1 00-699)#								
MUMCO Separ. - MCO (0), ML (1) FF3(1-144)# 44# (0 or 1)#								
VAU Hunting Priority - No Priority (0), Priority (1) FF3 (1-144)# 45# (0 or 1)#								
SLT Disconnect Signal Disabled (0), Enabled (1) FF3 (1-144)# 46# (0 or 1)#								
VAU Port Assignment Nat VAU (0), VAU (1) FF3 (1-144)# 47# (0 or 1)#								
Hot Dial Pad Disabled(0), Enabled (1) FF3 (1-144)# 48# (0 or 1)#								
Auto-Redial on Extensions Disabled(0), Enabled (1) FF3 (1-144)# 49# (0 or 1)#								
Analog Port Support Disabled (0), Enabled (1) FF3 (1-144)# 51# (0 or 1) #								
Analog Port Data Security Disabled (0), Enabled (1) FF3 (1-144)# 52# (0 or 1)#								
Message Key Enable (used with 44- Series Large LCD Phone) Disabled (0), Enabled (1) FF3 (1-144)# 53# (0 or 1)#								

Section 4 - Ringing and Hunt Groups (FF4)

Trunk Number _____ (1-64)

Trunk Name _____

Trunk Telephone Number _____ (For reference only)

Table 11: Trunk to Extension Ring Assignments

Call Type	Extension Port(s) to Ring (1 to 144)
CO Day Ring Assignment -Extension Ports (No ring - 0, Ring - 1) FF4 1# (Ext Port)# (1-64)# (0/1)#	
CO Delayed Day Ring - Extension Ports (No ring - 0, Ring - 1) FF4 5# (Ext Port)# (1-64)# (0/1)#	
CO Night 1 Ring -Extension Ports (No ring - 0, Ring - 1) FF4 2# (Ext Port)# (1-64)# (0/1)#	
CO Delayed Night 1 Ring Extension Ports (No ring - 0, Ring - 1) FF4 6# (Ext Port)# (1-64)# (0/1)#	
CO Night 2 Ring Assignments Extension Ports (No ring - 0, Ring - 1) FF4 9#1# (Ext Port)# (1-64)# (0/1)#	
CO Delayed Night 2 Ring Assignments Extension Port (No ring - 0, Ring - 1) FF4 9# 2# (Ext Port)# (1-64)# (0/1)#	

Notes:

With CPC-A and CPC-AII, use 1 - 72 for Extension ports, 73 for UNA.

With CPC-B/EX, use 1 - 144 for Extension ports. 145 for UNA.

By default, all trunks ring ports 1 and 2 for CO Day, Night1 and Night2 Ring Assignments.

Trunk Number _____ (1-64)

Table 12: Trunk to Hunt Group Ring Assignments

Call Type	Hunt Group to Ring (Circle)							
	Hunt Group 1	Hunt Group 2	Hunt Group 3	Hunt Group 4	Hunt Group 5	Hunt Group 6	Hunt Group 7	Hunt Group 8
CO Day Ring -Hunt Group Numbers(1 - 8) (No ring - 0, Ring - 1) FF4 1# (Hunt Group)# (1-64)# (0/1)#	CPC-A11 (79) CPC-B/EX(151)	CPC-A11 (80) CPC-B/EX(152)	CPC-A11 (81) CPC-B/EX(153)	CPC-A11 (82) CPC-B/EX(154)	CPC-A11 (83) CPC-B/EX(155)	CPC-A11 (84) CPC-B/EX(156)	CPC-A11 (85) CPC-B/EX(157)	CPC-A11 (86) CPC-B/EX(156)
CO Delayed Day Ring Assignments - Hunt Groups (No ring - 0, Ring - 1) FF4 5# (Hunt Group)# (1-64)# (0/1)#	CPC-A11 (79) CPC-B/EX(151)	CPC-A11 (80) CPC-B/EX(152)	CPC-A11 (81) CPC-B/EX(153)	CPC-A11 (82) CPC-B/EX(154)	CPC-A11 (83) CPC-B/EX(155)	CPC-A11 (84) CPC-B/EX(156)	CPC-A11 (85) CPC-B/EX(157)	CPC-A11 (86) CPC-BJ EX(158)
CO Night1 Ring Assignments -Hunt Groups (No ring - 0, Ring - 1) FF4 2# (Hunt Group)# (1-64)# (0/1)#	CPC-A11 (79) CPC-B/EX(151)	CPC-A11 (80) CPC-B/EX(152)	CPC-A11 (81) CPC-B/EX(153)	CPC-A11 (82) CPC-B/EX(154)	CPC-A11 (83) CPC-B/EX(155)	CPC-A11 (84) CPC-B/EX(156)	CPC-A11 (85) CPC-BJ EX(157)	CPC-A11 (86) CPC-B/EX(158)
CO Delayed Night1 Ring Assignment - Hunt Groups (No ring - 0, Ring - 1) FF4 6# (Hunt Group)# (1-64)# (0/1)#	CPC-A11 (79) CPC-B/EX(151)	CPC-A11 (80) CPC-B/EX(152)	CPC-A11 (81) CPC-B/EX(153)	CPC-A11 (82) CPC-B/EX(154)	CPC-A11 (83) CPC-B/EX(155)	CPC-A11 (84) CPC-B/EX(156)	CPC-A11 (85) CPC-B/EX(157)	CPC-A11 (86) CPC-B/EX(158)
CO Night2 Ring Assignments - Hunt Groups (No ring - 0, Ring - 1) FF4 9# 2# (Hunt Group)# (1-64)# (0/1)#	CPC-A11 (79) CPC-B/EX(151)	CPC-A11 (80) CPC-B/EX(152)	CPC-A11 (81) CPC-B/EX(153)	CPC-A11 (82) CPC-B/EX(154)	CPC-A11 (83) CPC-BJ EX(155)	CPC-A11 (84) CPC-B/EX(156)	CPC-A11 (85) CPC-B/EX(157)	CPC-A11 (86) CPC-B/EX(158)
CO Delayed Night2 Ring Assignments - Hunt Groups (No ring - 0, Ring - 1) FF4 9# 2# (Hunt Group)# (1-64)# (0/1)#	CPC-A11 (79) CPC-B/EX(151)	CPC-A11 (80) CPC-B/EX(152)	CPC-A11 (81) CPC-B/EX(153)	CPC-A11 (82) CPC-B/EX(154)	CPC-A11 (83) CPC-B/EX(155)	CPC-A11 (84) CPC-B/EX(156)	CPC-A11 (85) CPC-B/EX(157)	CPC-A11 (86) CPC-B/EX(158)

Notes:

With CPC-A11, enter 79 for Hunting Group 1, 80 for HG2, 81 for HG3, 82 for HG4, 83 for HG5, 84 for HG6, 85 for HG7, and 86 for HG8.

With CPC-B/EX, enter 151 for Hunting Group 1, 152 for HG2, 153 for HG3, 154 for HG4, 155 for HG5, 156 for HG6, 157 for HG7, and 158 for HG8.

Table 13: Hunt Group Assignments

Hunt Group Assignments	Hunt Group 1	Hunt Group 2	Hunt Group 3	Hunt Group 4	Hunt Group 5	Hunt Group 6	Hunt Group 7	Hunt Group 8
Hunt Group Name (See Table 26 on page 44)								
Pilot Extension # FF4 3# (1-8)# 1# (11-69 or 101-699)#								
Hunt Group Type Terminal (0), Distributed (1), Longest Idle (2) FF4 3# (1-8)# 2# (0-2)#								
Hunt Group No Answer Timer 0-15, Default = 12 sec. - 2 FF1 3# 24# (0-15)# (Also on page 14)								
Transfer (Overflow) Extension Number FF4 3# (1-8)# 3# (10-69 or 100-699)#								
Hunt Group Transfer Timer No transfer - 0, 1 - 32 sec. (Default = 2 sec. - 2) FF4 3# (1-8)# 4# (0-32)#								
Hunt Group Member - Position 1 Extension # FF4 3# (1-8)# 5# (10-69 or 100-699)#								
Hunt Group Member - Position 2 Extension # FF4 3# (1-8)# 6# (10-69 or 100-699)#								
Hunt Group Member - Position 3 Extension # FF4 3# (1-8)# 7# (10-69 or 100-699)#								
Hunt Group Member - Position 4 Extension # FF4 3# (1-8)# 8# (10-69 or 100-699)#								
Hunt Group Member - Position 5 Extension # FF4 3X(1-8)# 9#(10-69 or 100-699)#								
Hunt Group Member - Position 6 Extension # FF4 3# (1-8)# 10# (10-69 or 100-699)##								
Hunt Group Member - Position 7 Extension # FF4 3# (1-8)# 11# (10-69 or 100-699)#								
Hunt Group Member - Position 8 Extension # FF4 3# (1-8)# 12# (10-69 or 100-699)#								
Hunt Group Member - Position 9 Extension # FF4 3X (1-8) R13#(10-69 or 100-699)#(CPC-AII/B/EX)								
Hunt Group Member - Position 10 Extension # FF4 3# (1-8) f 14#(10-69 or 100-699)#(CPC-AII/B/EX)								
Hunt Group Member - Position 11 Extension # FF4 3# (1-8)# 15# (10-69 or 100-699)#(CPC-AII/B/EX)								
Hunt Group Member - Position 12 Extension # FF4 3# (1-8)# 16# (10-69 or 100-699)#(CPC-AII/B/EX)								
Hunt Group Member - Position 13 Extension # FF4 3# (1-8)# 17# (10-69 or 100-699)#(CPC-AII/B/EX)								
Hunt Group Member - Position 14 Extension # FF4 3# (1-8)# 18# (10-69 or 100-699)#(CPC-AII/B/EX)								
Hunt Group Member - Position 15 Extension # FF4 3# (1-8)# 19# (10-69 or 100-699)#(CPC-AII/B/EX)								
Hunt Group Member - Position 16 Extension # FF4 3# (1-8)# 20# (10-69 or 100-699)#(CPC-AII/B/EX)								

Table 14: Call Coverage Group Member

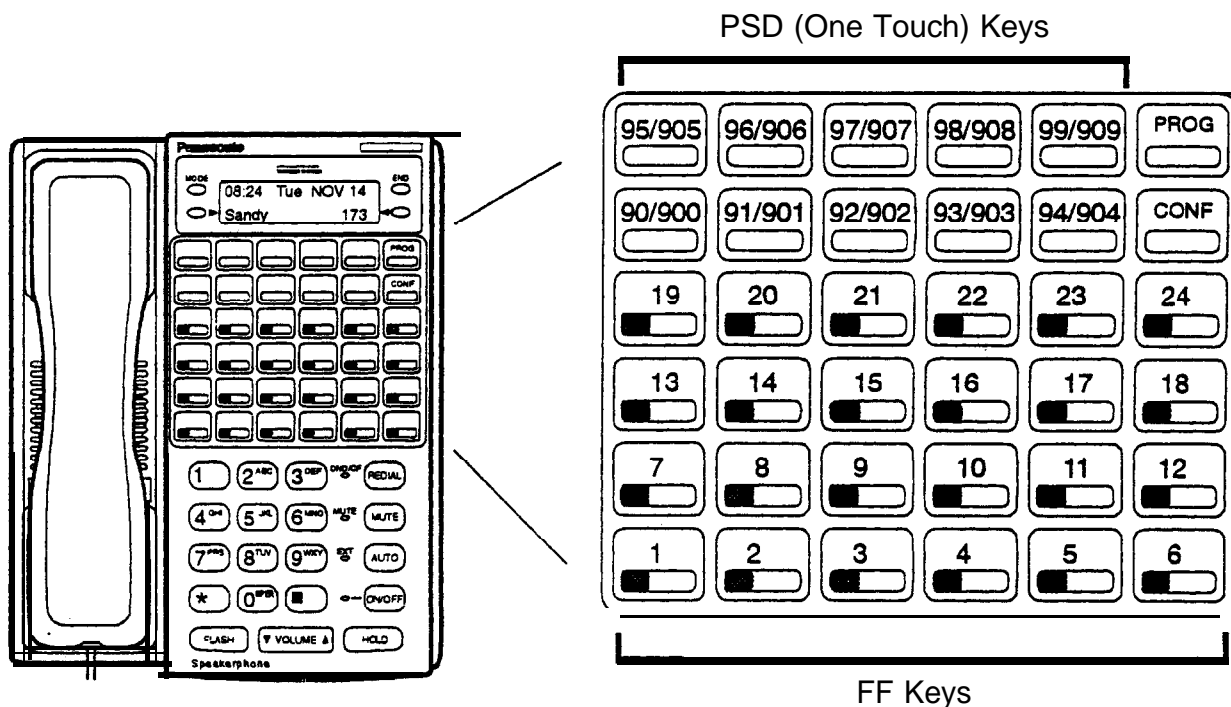
Call Coverage Group	Position 1 secretary (1st covering position) FF4 4# (1-16)# 1# (10-69 or 100-699)#	Position 2 secretary (2nd covering position) FF44# (1-16)# 2# (10-69 or 100-699)#	Position 3 member FF44# (1-16)# 3# (10-69 or 100-699)#	Position 4 member FF4 4# (1-16)# 4# (10-69 or 100-699)#	Position 5 member FF44# (1-16)# 5# (10-69 or 100-699)#	Position 6 member FF44# (1-16)# 6# (10-69 or 100-699)#	Position 7 member FF4 4# (1-16)# 7# (10-69 or 100-699)#	Position 8 member FF44# (1-16)# 8# (10-69 or 100-699)#
1								
2								
3								
4								
5								
6								
7								
8								
9								
10								
11								
12								
13								
14								
15								
16								

No tes:

Position 2 secretary does not cover until position 1 secretary is set to Do Not Disturb, Call Forward, Absence Message or Busy on all **MCO/ML** keys.

Position 1 and Position 2 phones require a **DSS/BLF** key for all members.

Section 5 - FF Key Programming (FF5)



Port. _____

Extension # _____

Table 16: FF Key Assignment for Extension Ports
 FF5 (Ext Port)# (Key No.)# (Feature Code)#

Key	Feature Code	Key	Feature Code	Key	Feature Code	Key	Feature Code	Key	Feature Code	Key	Feature Code
19		20		21		22		23		24	
13		14		15		16		17		18	
7		8		9		10		11		12	
1		2		3		4		5		6	

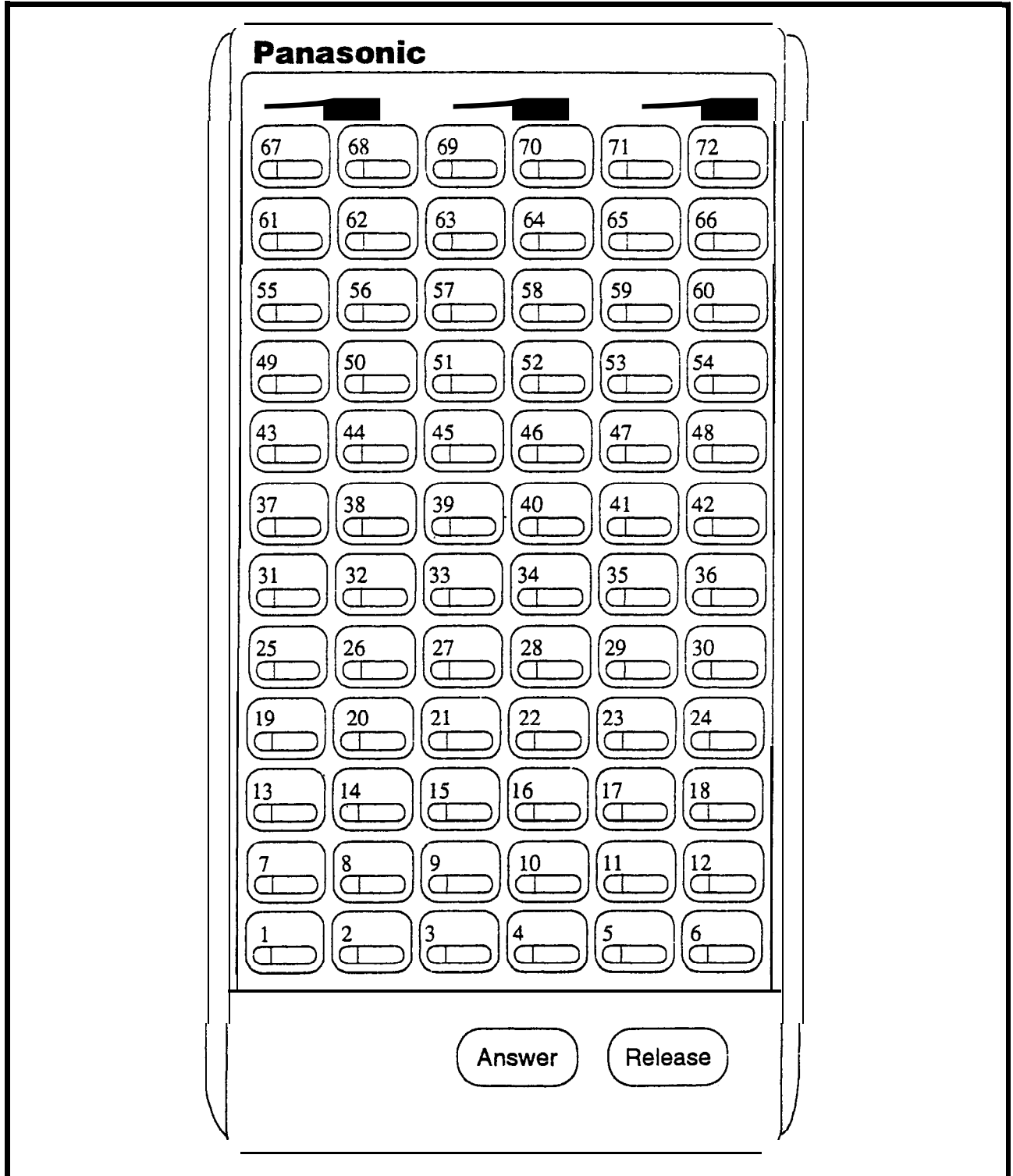
16 Key Telephone (VB-42210, 42211, 42213) = FF Keys 1 to 6
 22 Key Telephone (VB-43220, 43221, 43223, 43225) = FF Keys 1 to 12
 34 Key Telephone (VB-43230, 43231, 43233) = FF Keys 1 to 24

Select One

1st DSS 72 Consoie for 1st Attendant _____
 2nd DSS 72 Console for 1 st Attendant _____
 1st DSS 72 Console for 2nd Attendant _____
 2nd DSS 72 Console for 2nd Attendant _____

FF5 (73-CPC-A/AII or 145-CPC-B/EX)# (Key No.)# (Feature Code)#
 FF.5 (74-CPC-A/AII or 146-CPC-B/EX)# (Key No.)# (Feature Code)#
 FF5 (75-CPC-A/AII or 147-CPC-B/EX)# (Key No.)# (Feature Code)#
 FF5 (76-CPC-A/AII or 148-CPC-B/EX)# (Key No.)# (Feature Code)#

Table 17: DSS 72 (New 44-Series Version) Key Assignments



These forms may be reproduced as needed by certified DBS Dealers and Technicians.

Select One:

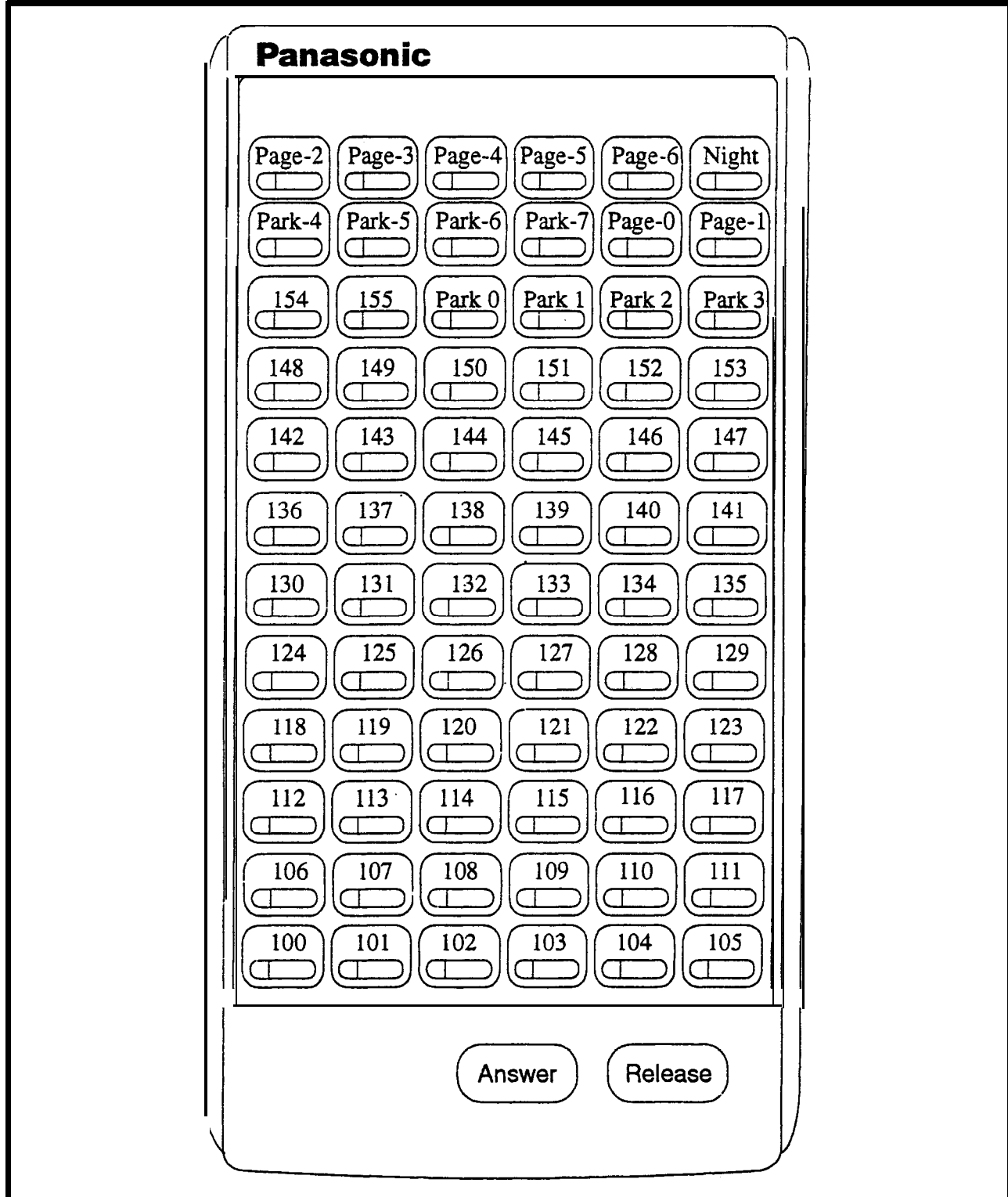
1st DSS 72 Console for 1st Attendant _____

2nd DSS 72 Console for 1st Attendant (No Default)

1st DSS 72 Console for 2nd Attendant _____

2nd DSS 72 Console for 2nd Attendant _____ (No Default)

Default DSS 72 (New 44-Series Version) Key Assignments (3-Digit Numbering)



These forms may be reproduced as needed by certified DBS Dealers and Technicians.

Select One:

1st DSS 72 Console for 1st Attendant

2nd DSS 72 Console for 1st Attendant (No Default)

1st DSS 72 Console for 2nd Attendant

2nd DSS 72 Console for 2nd Attendant (Default)

Default DSS 72 (Original Version) Key Assignments (3-Digit Numbering)

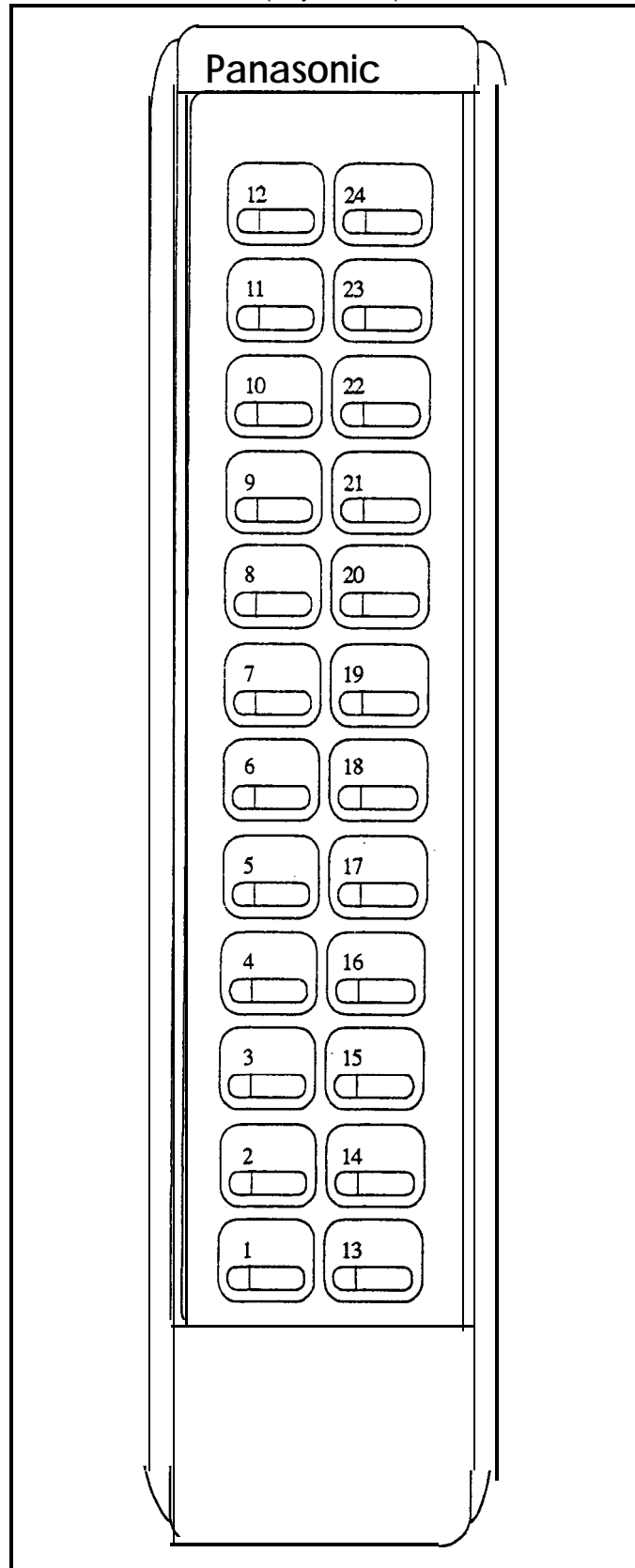
FF12 00 (Page All) 65	FF12 01 (Page 01) 66	FF12 02 (Page 02) 67	FF12 03 (Page 03) 68	FF12 04 (Page 04) 69	FF12 05 (Page 05) 70	FF12 06 (Page 06) 71	FF12 520 (Night) 72
75 00 (Park 0) 57	75 01 (Park 1) 58	75 02 (Park 2) 59	75 03 (Park 3) 60	75 04 (Park 4) 61	75 05 (Park 5) 62	75 06 (Park 6) 63	75 07 (Park 7) 64
Ext 148 49	Ext 149 50	Ext 150 51	Ext 151 52	Ext 152 53	Ext 153 54	Ext 154 55	Ext 155 56
Ext 140 41	Ext 141 42	Ext 142 43	Ext 143 44	Ext 144 45	Ext 145 46	Ext 146 47	Ext 147 48
Ext 132 33	Ext 133 34	Ext 134 35	Ext 135 36	Ext 136 37	Ext 137 38	Ext 138 39	Ext 139 40
Ext 124 25	Ext 125 26	Ext 126 27	Ext 127 28	Ext 128 29	Ext 129 30	Ext 130 31	Ext 131 32
Ext 116 17	Ext 117 18	Ext 118 19	Ext 119 20	Ext 120 21	Ext 121 22	Ext 122 23	Ext 123 24
Ext 108 9	Ext 109 10	Ext 110 11	Ext 111 12	Ext 112 13	Ext 113 14	Ext 114 15	Ext 115 16
Ext 100 1	Ext 101 2	Ext 102 3	Ext 103 4	Ext 104 5	Ext 105 6	Ext 106 7	Ext 107 8

These forms may be reproduced as needed by certified DBS Dealers and Technicians.

EM/24 Extension Port Related Key Phone Extension Port _____

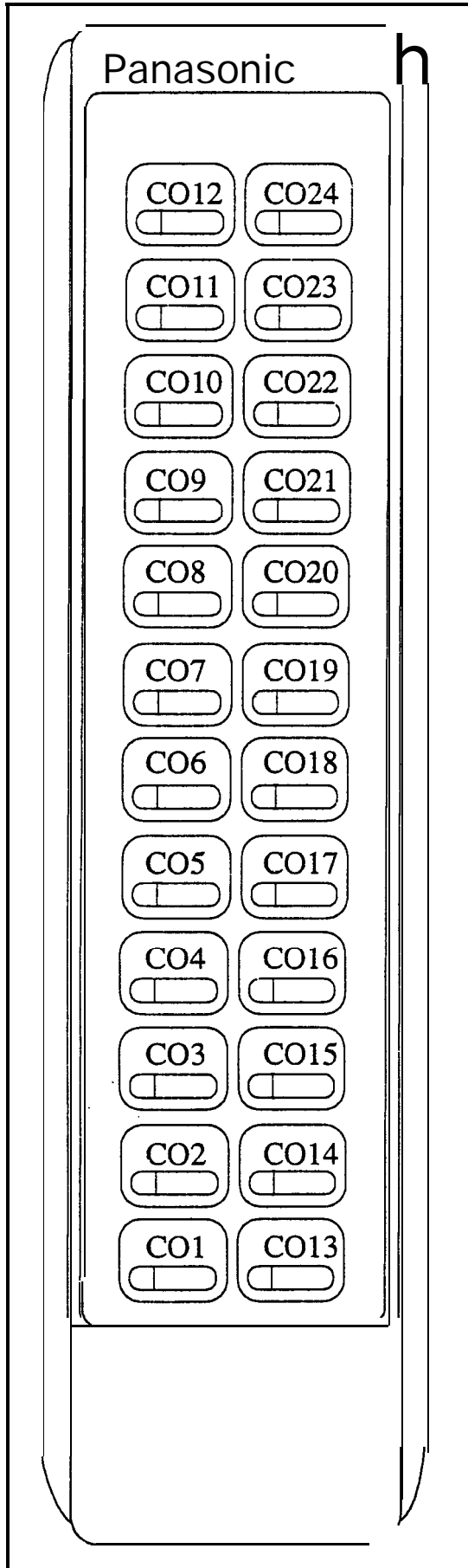
Table 19: EM/24 (New 44-Series) Key Assignments

FF5 (Ext Port)# (Key No.)# (Feature Code)#



These forms may be reproduced as needed by certified DBS Dealers and Technicians.

Default EM/24 (New 44-Series) Key Assignments



EM/24 Extension Port Related Key Phone Extension Port _____

Table 20: EM/24 (Original Version) Key Assignments
FF5 (Ext Port)# (Key No.)# (Feature Code)#

8	L - I	L - I
7	15	23
6	14	22
5	L - I	21
4	12	20
3	11	19
2	10	L - I
1	9	17

Default EM/24 (Original Version) Key Assignments

08 8 (TRK8)	16 16 (TRK16)	24 24 (TRK24)
07 7 (TRK7)	15 15 (TRK15)	23 23 (TRK23)
06 6 (TRK6)	14 14 (TRK14)	22 22 (TRK22)
05 5 (TRK5)	13 13 (TRK13)	21 21 (TRK21)
04 4 (TRK4)	12 12 (TRK12)	20 20 (TRK20)
03 3 (TRK3)	11 11 (TRK11)	19 19 (TRK19)
02 2 (TRK2)	10 10 (TRK10)	18 18 (TRK18)
01 1 (TRK1)	09 9 (TRK9)	17 17 (TRK17)

Port # _____ Ext # _____

Table 23: Personal Speed Dii

Personal Speed Dial # (2 digits 90-99 or 3 digits 900-909)	Name (Up to 16 Characters) FF6 3# (Ext Port)# (PSD)# CONF (Name)#	Number (Up to 16 Digits) FF10 2# (Ext Port)# (PSD) (Phone Number)#
90/900		
91/901		
92/902		
93/903		
94/904		
95/905		
96/906		
97/907		
98/908		
99/909		

Notes:

Name assignments require a **DSS/72**

Table 24: Absence Messages

Absence Message #	Message Text (Up to 15 Characters) (Requires DSS/72)
Message 5 (FF6 4# 5# CONF (Message)#	
Message 6 (FF6 4# 6# CONF (Message)#	
Message 7 (FF6 4# 7# CONF (Message)#	-
Message 8 (FF6 4# 8# CONF (Message)#	--
Message 9 (FF6 4# 9# CONF (Message)#	

Table 25: Trunk Name Assignments

Trunk Number	Name Text (Up to 6 Characters) (Requires DSS/72)
Trunk1 (FF6 5# 1# CONF (Name)#)	
Trunk 2 (FF6 5# 2# CONF (Name)#)	
Trunk 3 (FF6 5# 3# CONF (Name)#)	
Trunk 4 (FF6 5# 4# CONF (Name)#)	
Trunk 5 (FF6 5# 5# CONF (Name)#)	
Trunk 6 (FF6 5# 6# CONF (Name)#)	
Trunk 7 (FF6 5# 7# CONF (Name)#)	
Trunk 6 (FF6 5# 8# CONF (Name)#)	
Trunk8 (FF6 5# 9# CONF (Name)#)	
Trunk 10 (FF6 5# 10# CONF (Name)#)	
Trunk 11 (FF6 5# 11# CONF (Name)#)	
Trunk 12 (FF6 5# 12# CONF (Name)#)	
Trunk 13 (FF6 5# 13# CONF (Name)#)	
Trunk 14 (FF6 5# 14# CONF (Name)#)	
Trunk 15 (FF6 5# 15# CONF (Name)#)	
Trunk 16 (FF6 5# 16# CONF (Name)#)	
Trunk17 (FF6 5# 17# CONF (Name)#)	
Trunk 16 (FF6 5# 18# CONF (Name)#)	
Trunk 18 (FF6 5# 19# CONF (Name)#)	
Trunk 20 (FF6 5# 20# CONF (Name)#)	
Trunk 21 (FF6 5# 21# CONF (Name)#)	1
Trunk 22 (FF6 5# 22# CONF (Name)#)	
Trunk 23 (FF6 5# 23# CONF (Name)#)	
Trunk 24 (FF6 5# 24# CONF (Name)#)	
Trunk 25 (FF6 5# 25# CONF (Name)#)	
Trunk 26 (FF6 5# 26# CONF (Name)#)	
Trunk 27 (FF6 5# 27# CONF (Name)#)	
Trunk 26 (FF6 5# 28# CONF (Name)#)	
Trunk 28 (FF6 5# 29# CONF (Name)#)	
Trunk 30 (FF6 5# 30# CONF (Name)#)	
Trunk 31 (FF6 5# 31# CONF (Name)#)	
Trunk 32 (FF6 5# 32# CONF (Name)#)	

These forms may be reproduced as needed by certified DBS Dealers and Technicians.

Table 25: Trunk Name Assignments

Trunk Number	Name Text (Up to 6 Characters) (Requires DSS/72)
Trunk 33 (FF6 5# 33# CONF (Name)#)	
Trunk 34 (FF6 5% 34X CONF (Name)#)	
Trunk 35 (FF6 5X 35# CONF (Name)#)	
Trunk 36 (FF6 5# 36# CONF (Name)#)	
Trunk 37 (FF6 5# 37# CONF (Name)#)	
Trunk 38 (FF6 5# 38# CONF (Name)#)	
Trunk 39 (FF6 5# 39# CONF (Name)#)	
Trunk 40 (FF6 5% 40# CONF (Name)#)	
Trunk 41 (FF6 5# 41# CONF (Name)#)	
Trunk 42 (FF6 5# 42# CONF (Name)%)	
Trunk 43 (FF6 5# 43# CONF (Name)#)	
Trunk 44 (FF6 5# 44# CONF (Name)%)	
Trunk 45 (FF6 5# 45% CONF (Name)#)	
Trunk 46 (FF6 5# 46# CONF (Name)%)	
Trunk 47 (FF6 5# 47% CONF (Name)#)	
Trunk 48 (FF6 5# 48% CONF (Name)#)	
Trunk 49 (FF6 5# 49# CONF (Name)#)	
Trunk 50 (FF6 5# 50# CONF (Name)%)	
Trunk 51 (FF6 5# 51# CONF (Name)#)	
Trunk 52 (FF6 5# 52# CONF (Name)#)	
Trunk 53 (FF6 5# 53# CONF (Name)#)	
Trunk 54 (FF6 5# 54X CONF (Name)%)	
Trunk 55 (FF6 5# 55X CONF (Name)#)	
Trunk 56 (FF6 5# 56# CONF (Name)#)	
Trunk 57 (FF6 5# 57# CONF (Name)#)	
Trunk 58 (FF6 5# 58# CONF (Name)#)	
Trunk 59 (FF6 5# 59# CONF (Name)#)	
Trunk 60 (FF6 5# 60# CONF (Name)#)	
Trunk 61 (FF6 5# 61# CONF (Name)#)	
Trunk 62 (FF6 5# 62# CONF (Name)#)	
Trunk 63 (FF6 5# 63# CONF (Name)#)	
Trunk 64 (FF6 5# 64X CONF (Name)#)	

These forms may be reproduced as needed by certified DBS Dealers and Technicians.

Table 26: Hunt Group Name Assignments

Hunt Group #	Name Text (Up to 10 Characters) (Requires DSS/72)
Hunt Group 1 (FF6 6# 1# CONF (Name)#)	
Hunt Group 2 (FF6 6# 2# CONF (Name)#)	
Hunt Group 3 (FF6 6# 3# CONF (Name)#)	
Hunt Group 4 (FF6 6# 4# CONF (Name)#)	
Hunt Group 5 (FF6 6# 5# CONF (Name)#)	
Hunt Group 6 (FF6 6# 6# CONF (Name)#)	
Hunt Group 7 (FF6 6# 7# CONF (Name)#)	
Hunt Group 8 (FF6 6# 8# CONF (Name)#)	

Table 27: Call Waiting/OHVA Text Reply

Message #	Message Text (Up to 15 Characters) (Requires DSS/72)
Message 1 (FF6 7# 1# CONF (Message)#)	(Default) Take A Message
Message 2 (FF6 7# 2# CONF (Message)#)	(Default) Please Hold
Message 3 (FF6 7# 3# CONF (Message)#)	(Default) Will Call Back
Message 4 (FF6 7# 4# CONF (Message)#)	(Default) Transfer
Message 6 (FF6 7# 5# CONF (Message)#)	(Default) Unavailable

Section 7 - Toil Restriction Settings (FF7)

Table 28: TRS Settings

Parameter	Setting
International Calling for TRS Types 3-6 Restricted (Old Dialing Plan) or Check Country Code Table (New NANP) (0), No Restriction(1) FF7 1# 1# (0/1)#	
Dialing Restriction During Inbound Trunk Calls for TRS Types 3-6 When an incoming call is received, DTMF cannot be outdialled (0), DTMF can be outdialled FF7 1# 2# (0/1)#	
Maximum Dialled Digits for TRS Types 3-6 (from 15 (1) to 29 (15) digits) FF7 1# 3# (1-15)# (**indicates no limit, use CONF to clear entry and change to no limit)	
3-Digit Toll Restrictions for TRS Types 2-6:	
211 (Allow - 0, Deny - 1) - FF7 1# 4# (0/1)#	
311 (Allow - 0, Deny - 1) - FF7 1# 5# (0/1)#	
411 (Allow - 0, Deny - 1) - FF7 1# 6# (0/1)#	
511 (Allow - 0, Deny - 1) - FF7 1# 7# (0/1)#	
611 (Allow - 0, Deny - 1) - FF7 1# 8# (0/1)#	
711 (Allow - 0, Deny - 1) - FF7 1# 9# (0/1)#	
811 (Allow - 0, Deny - 1) - FF7 1# 10# (0/1)#	
Dialing Plan Switch Old Plan (0), New NANP (1) FF7 1# 17# (0/1)#	
Equal Access Code Format Old Format 1 OXXX (0) New Format 101XXXX (1) FF7 1# 21# (0/1)#	

These forms may be reproduced as needed by certified DBS Dealers and Technicians.

Table 30: TRS Country Codes Allowed*

Entry	Allowed Country Code (Up to 3 Digits)
1 (FF7 1# 20# 1# (0-999)#)	
2 (FF7 1# 20# 2# (0-999)#)	
3 (FF7 1# 20# 3# (0-999)#)	
4 (FF7 1# 20# 4# (0-999)#)	
5 (FF7 1# 20# 5# (0-999)#)	
6 (FF7 1# 20# 6# (0-999)#)	
7 (FR 1# 20# 7# (0-999)#)	
8 (FF7 1# 20# 8# (0-999)#)	
9 (FF7 1# 20# 9# (0-999)#)	
10 (FF7 1# 20# 1 0# (0-999)#)	

* Set FF7 1#1# 0# for International Caller, FF7 1#17#1# for New NANP

Table 31: TRS Office Code Restrictions for Types 2-6*

Entry	Denied Office Code (3 Digits)
1 (FF7 1# 22# 1# (000-999)#)	
2 (FF7 1# 22# 2# (000-999)#)	
3 (FF7 1# 22# 3# (000-999)#)	
4 (FF7 1# 22# 4# (000-999)#)	
5 (FF7 1# 22# 5# (000-999)#)	
6 (FF7 1# 22# 6# (000-999)#)	
7 (FF7 1# 22# 7# (000-999)#)	
8 (FF7 1# 22# 8# (000-999)#)	
9 (FF7 1# 22# 9# (000-999)#)	
10 (FF7 1# 22# 10# (000-999)#)	

* The entered office codes are always restricted regardless of any area code dialed. Set FF7 1#17#1# for New NANP.

Table 32: 7-Digit Toll Restriction for TRS Types 2-6

Parameter	Setting
7-Digit Toll Restriction for TRS Types 2-6 00 not check 7-Digit table (0), Check Special 7-digit table for TRS Types 2-6 (1) (See below) FF7 1# (11 for Type 2 to 15 for Type 6)# (0/1)#	

Table 33: Special 'I-Digit Table for TRS Types 2-6
FF7 6# (1-50)#

Entry #	Restricted 7-Digit Number
2	
3	
4	
5	
6	
7	
8	
9	
10	
11	
12	
13	
14	
15	
16	
17	
18	
19	
20	
21	
22	
23	
24	
25	

Entry #	Restricted 7-Digit Number
26	
27	
28	
29	
30	
31	
32	
33	
34	
35	
36	
37	
38	
39	
40	
41	
42	
43	
44	
45	
46	
47	
48	
49	
50	

___ Day FF7 7# (Ext Port)# (Trunk)# (TRS Type)#

Night FF7 8# (Ext Port)# (Trunk)# (TRS Type)#

Table 34: Day/Night TRS Types for Trunk

Extension Port	TRS Type (0 - 7)							
	Trunk ___	Trunk ___	Trunk ___	Trunk ___	Trunk ___	Trunk ___	Trunk ___	Trunk ___
Ext. Port ___								
Ext. Port ___								
Ext. Port ___								
Ext. Port ___								
Ext. Port ___								
Ext. Port ___								
Ext. Port ___								
Ext. Port ___								
Ext. Port ___								
Ext. Port ___								
Ext. Port ___								
Ext. Port ___								
Ext. Port ___								
Ext. Port ___								
Ext. Port ___								
Ext. Port ___								
Ext. Port ___								
Ext. Port ___								
Ext. Port ___								
Ext. Port ___								
Ext. Port ___								
Ext. Port ___								
Ext. Port ___								
Ext. Port ___								
Ext. Port ___								
Ext. Port ___								
Ext. Port ___								
Ext. Port ___								
Ext. Port ___								

Table 35: Special Area Code Table for TRS Types 3-6

Special Area Code Table Number	Special Area Code (000-999)
Special Area Code Table 1 (FF7 4# 1# (000-999)#)	
Special Area Code Table 2 (FF7 4# 2# (000-999)#)	
Special Area Code Table 3 (FF7 4# 3# (000-999)#)	
Special Area Code Table 4 (FF7 4# 4# (000-999)#)	

TRS AREA CODE AND OFFICE CODE PLANNING NOTES

When planning the TRS Type settings, use higher numbered TRS types for less restrictive calling. The defaults for the TRS Types are as follows:

- TRS Type 3 Defaults - All Area Codes **Restricted** All Office Codes **Restricted**
- TRS Type 4 Defaults - All Area Codes **Restricted** All Office Codes **Restricted**
- TRS Type 5 Defaults - All Area Codes **Allowed** All Office Codes **Allowed**
- TRS Type 6 Defaults - All Area Codes **Allowed** All Office Codes **Allowed**

When planning Special Area Codes, use higher numbered Special Area Codes for less restrictive calling. The defaults for the Special Area Code are as follows:

- Special Area Code 1 Defaults - All Special Office Codes **Restricted**
- Special Area Code 2 Defaults - All Special Office Codes **Allowed**
- Special Area Code 3 Defaults - All Special Office Codes **Allowed**
- Special Area Code 4 Defaults - All Special Office Codes **Allowed**

Select one of the following:

- Area Code Table for TRS Type (3-6) FF7 2# (3-6)# (000-999)# (0/1)#
Office Code Table for TRS Type (3-6) FF7 3# (3-6)# (000-999)# 0/1)#
 _____ Special Office Code Table (1-4) FF7 5# (1-4)# (000-999)# 0/1)#

Table 36: TRS Area Code/Office Code Table (000-249)

All ow (Circle) or Deny (X-Out)									
000	001	002	003	004	005	006	007	008	009
010	011	012	013	014	015	016	017	018	019
020	021	022	023	024	025	026	027	028	029
030	031	032	033	034	035	036	037	038	039
040	041	042	043	044	045	046	047	048	049
050	051	052	053	054	055	056	057	058	059
060	061	062	063	064	065	066	067	068	069
070	071	072	073	074	075	076	077	078	079
080	081	082	083	084	085	086	087	088	089
090	091	092	093	094	095	096	097	098	099
100	101	102	103	104	105	106	107	108	109
110	111	112	113	114	115	116	117	118	119
120	121	122	123	124	125	126	127	128	129
130	131	132	133	134	135	136	137	138	139
140	141	142	143	144	145	146	147	148	149
150	151	153	153	154	155	156	157	158	159
160	161	162	163	164	165	166	167	168	169
170	171	172	173	174	175	176	177	178	179
180	181	182	183	184	185	186	187	188	189
190	191	192	193	194	195	196	197	198	199
200	201	202	203	204	205	206	207	208	209
210	211	212	213	214	215	216	217	218	219
220	221	222	223	224	225	226	227	228	229
230	231	232	233	234	235	236	237	238	239
240	241	242	243	244	245	246	247	248	249

Notes:

- TRS Type 3 Area Code and Office Code defaults restrict dialing.
- TRS Type 4 Area Code defaults restrict dialing and Office Code defaults allow dialing.
- TRS Type 5 Area Code defaults allow dialing and Office Codes defaults allow dialing.
- TRS** Type 6 Area Code defaults allow dialing and Office Codes defaults allow dialing.
- Special Office Code Table 1 and 2 defaults restrict dialing.
- Special Office Code Table 3 and 4 defaults allow dialing.

Select one of the following:

- Area Code Table for TRS Type ____ (3-6) FF7 2# (3-6)# (000-999)# (0/1)#
 ____ Office Code Table for TRS Type ____ (3-6) FF7 3# (3-6)# (000-999)# (0/1)#
Special Office Code Table ____ (1-4) FF7 5# (1-4)# (000-999)# (0/1)#

Table 37: TRS Area Code/Office Code Table (250-499)

All low (Circle) or Deny (X-Cut)									
250	251	252	253	254	255	256	257	258	259
260	261	262	263	264	265	266	267	268	269
270	271	272	273	274	275	276	277	278	279
280	281	282	283	284	285	286	287	288	289
290	291	292	293	294	295	296	297	298	299
300	301	302	303	304	305	306	307	308	309
310	311	312	313	314	315	316	317	318	319
320	321	322	323	324	325	326	327	328	329
330	331	332	333	334	335	336	337	338	339
340	341	342	343	344	345	346	347	348	349
350	351	352	353	354	355	356	357	358	359
360	351	362	363	364	365	366	367	368	369
370	371	372	373	374	375	376	377	378	379
380	381	382	383	384	385	386	387	388	389
390	391	392	393	394	395	396	397	398	399
400	401	402	403	404	405	406	407	408	409
410	411	412	413	414	415	416	417	418	419
420	421	422	423	424	425	426	427	428	429
430	431	432	433	434	435	436	437	438	439
440	441	442	443	444	445	446	447	448	449
450	451	452	453	454	455	456	457	458	459
460	461	462	463	464	465	466	467	468	469
470	471	472	473	474	475	476	477	478	479
480	481	482	483	484	485	486	487	488	489
490	491	492	493	494	495	496	497	498	499

Notes:

- TRS Type 3 Area Code and Office Code defaults restrict dialing.
- TRS Type 4 Area Code defaults restrict dialing and Office Code defaults allow dialing.
- TRS Type 5 Area Code defaults allow dialing and Office Codes defaults allow dialing.
- TRS Type 6 Area Code defaults allow dialing and Office Codes defaults allow dialing.
- Special Office Code Table 1 and 2 defaults restrict dialing.
- Special Office Code Table 3 and 4 defaults allow dialing.

Select one of the following:

- ____ Area Code Table for TRS Type ____ (3-6) FF7 2# (3-6)# (000-999)# (0/1)#
- Office Code Table for TRS Type ____ (3-6) FF7 3# (3-6)# (000-999)# (0/1)#
- Special Office Code Table ____ (1-4) FF7 5# (3-6)# (000-999)# (0/1)#

Table 38: TRS Area Code/Office Code Table (500-749)

Allow (Circle) or Deny (X-Out)									
500	501	502	503	504	505	506	507	508	509
510	511	512	513	514	515	516	517	518	519
520	521	522	523	524	525	526	527	528	529
530	531	532	533	534	535	536	537	538	539
540	541	542	543	544	545	546	547	548	549
550	551	552	553	554	555	556	557	558	559
560	561	562	563	564	565	566	567	568	569
570	571	572	573	574	575	576	577	578	579
580	581	582	583	584	585	586	587	588	589
590	591	592	593	594	595	596	597	598	599
600	601	602	603	604	605	606	607	608	609
610	611	612	613	614	615	616	617	618	619
620	621	622	623	624	625	626	627	628	629
630	631	632	633	634	635	636	637	638	639
640	641	642	643	644	645	646	647	648	649
650	651	652	653	654	655	656	657	658	659
660	661	662	663	664	665	666	667	668	669
670	671	672	673	674	675	676	677	678	679
680	681	682	683	684	686	686	687	688	689
690	691	692	693	694	695	696	697	698	699
700	701	702	703	704	705	706	707	708	709
710	711	712	713	714	715	716	717	718	719
720	721	722	723	724	725	726	727	728	729
730	731	732	733	734	735	736	737	738	739
740	741	742	743	744	745	746	747	748	749

Notes:

- TRS Type 3 Area Code and Office Code defaults restrict dialing.
- TRS Type 4 Area Code defaults restrict dialing and Office Code defaults **allow** dialing.
- TRS Type 5 Area Code defaults allow dialing and **Office** Codes defaults allow dialing.
- TRS Type 6 Area Code defaults allow dialing and **Office** Codes defaults allow dialing.
- Special Office Code Table 1 and 2 defaults restrict dialing.
- Special **Office** Code Table 3 and 4 defaults allow dialing.

Select one of the following:

- ___ Area Code Table for TRS Type (3-6) FF7 2# (3-6)# (000-999)# (0/1)#
 Office Code Table for TRS Type (3-6) FF7 3# (3-6)# (000-999)# (0/1)#
 Special Office Code Table ___ (1-4) FF7 5# (3-6)# (000-999)# (0/1)#

Table 39: TRS Area Code/Office Code Table (750-999)

Allow (Circle) or Deny (X-Out)									
750	751	752	753	754	755	756	757	758	759
760	761	762	763	764	765	766	767	768	769
770	771	772	773	774	775	776	777	778	779
780	781	782	783	784	785	786	787	788	789
790	791	792	793	794	795	796	797	798	799
800	801	802	803	804	805	806	807	808	809
810	811	812	813	814	815	816	817	818	819
820	821	822	823	824	825	826	827	828	829
830	831	832	833	834	835	836	837	838	839
840	841	842	843	844	845	846	847	848	849
850	851	852	853	854	855	856	857	858	859
860	861	862	863	864	865	866	867	868	869
870	871	872	873	874	875	876	877	878	879
880	881	882	883	864	885	886	887	888	889
890	891	892	893	894	895	896	897	898	899
900	901	902	903	904	905	906	907	908	909
910	911	912	913	914	915	916	917	918	919
920	921	922	923	924	925	926	927	928	929
930	931	932	933	934	935	936	937	938	939
940	941	942	943	944	945	946	947	948	949
950	951	952	953	954	955	956	957	958	959
960	961	962	963	964	965	966	967	968	969
970	971	972	973	974	975	976	977	978	979
980	961	982	983	984	985	986	967	988	969
990	991	992	993	994	995	996	997	996	999

Notes:

- TRS Type 3 Area Code and Office Code defaults restrict dialing.
- TRS Type 4 Area Code defaults restrict dialing and Office Code defaults allow dialing.
- TRS Type 5 Area Code defaults allow dialing and Office Codes defaults allow dialing.
- TRS Type 6 Area Code defaults allow dialing and Office Codes defaults allow dialing.
- Special Office Code Table 1 and 2 defaults restrict dialing.
- Special Office Code Table 3 and 4 defaults allow dialing.

Section 8 - Least Cost Routing (FF 8)

Table 40: LCR Trunk Group Assignments

		LCR Trunk Group 1 For Long Distance or	LCR Trunk Group 2 For Local or	LCR Trunk Group 3 For Backup or	LCR Trunk Group 4 For	LCR Trunk Group 5 For	LCR Trunk Group 6 For	LCR Trunk Group 7 For	LCR Trunk Group 8 for
		-	-	-	-	-	-	-	-
Priority	Priority 1 Trunk Port FF8 6# (LCR Trunk Group No.)# 1# (Trunk Port)#								
	Priority 2 Trunk Port FF8 6# (LCR Trunk Group No.)# 2# (Trunk Port)#								
	Priority 3 Trunk Port FF8 6# (LCR Trunk Group No.)# 3# (Trunk Port)#								
	Priority 4 Trunk Port FF8 6X (LCR Trunk Group No.)# 4# (Trunk Port)#								
	Priority 5 Trunk Port FF8 6# (LCR Trunk Group No.)# 5# (Trunk Port)#								
	Priority 6 Trunk Port FF8 6# (LCR Trunk Group No.)# 6# (Trunk Port)#								
	Priority 7 Trunk Port FF8 6# (LCR Trunk Group No.)# 7# (Trunk Port)#								
	Priority 8 Trunk Port FF8 6# (LCR Trunk Group No.)# 8# (Trunk Port)#								
Add/ Delete Digits	Deletion Digits (Up to 16 Digits) FF8 7# (LCR Trunk Group No.)# (Deletion Digits)#								
	Addition Digits (Up to 16 Digits) FF8 8# (LCR Trunk Group No.)# (Addition Digits)#								

Table 41: Time Priority Route Table 1-8 (Periods 1-24)

FF8 5# (Time Priority Route Table)# (Priority)# (LCR Trunk Group)#

Time Period Priority Position		LCR Trunk Group (1-8)							
		Time Priority Route Table 1 for Long Distance or	Time Priority Route Table 2 for Local or	Time Priority Route Table 3 For Backup or	Time Priority Route Table 4 for	Time Priority Route Table 5 for	Time Priority Route Table 6 for	Time Priority Route Table 7 for	Time Priority Route Table 8 for
:00 a.m. - :59 a.m.	Priority 1								
	Priority 2								
	Priority 3								
	Priority 4								
	Priority 5								
	Priority 6								
	Priority 7								
	Priority 8								
:00 a.m. - :59 p.m.	Priority 9								
	Priority 10								
	Priority 11								
	Priority 12								
	Priority 13								
	Priority 14								
	Priority 15								
	Priority 16								
:00 p.m. - :59 p.m.	Priority 17								
	Priority 18								
	Priority 19								
	Priority 20								
	Priority 21								
	Priority 22								
	Priority 23								
	Priority 24								

These forms may be reproduced as needed by certified DBS Dealers and Technicians.

Table 42: Time Priority Route Table I-8 (Periods 25-48)
FF8 5# (Tie Priority Route Table)# (Priority)# (LCR Trunk Group)#

Time Period Priority Position		LCR Trunk Group (I-6)							
		Time Priority Route Table 1 for Long Distance or	Time Priority Route Table 2 for Local or	Time Priority Route Table 3 For Backup or	Time Priority Route Table 4 for	Time Priority Route Table 5 for	Time Priority Route Table 6 for	Time Priority Route Table 7 for	Time Priority Route Table 8 for
1:00 p.m. - 11:59 p.m.	Priority 25								
	Priority 26								
	Priority 27								
	Priority 28								
	Priority 29								
	Priority 30								
	Priority 31								
	Priority 32								
12:00 a.m. - 11:59 a.m.	Priority 33								
	Priority 34								
	Priority 35								
	Priority 36								
	Priority 37								
	Priority 38								
	Priority 39								
	Priority 40								
Weekend	Priority 41								
	Priority 42								
	Priority 43								
	Priority 44								
	Priority 45								
	Priority 46								
	Priority 47								
	Priority 48								

Table 43: Time Priority Route Table 9-15 (Periods 1-24)
FF8 5# (Time Priority Route Table)# (Priority)# (LCR Trunk Group)#

Time Period/ Priority Position		LCR Trunk Group (1-8)						
		Time Priority Route Table 9 for	Time Priority Route Table 10 for	Time Priority Route Table 11 for	Time Priority Route Table 12 for	Time Priority Route Table 13 for	Time Priority Route Table 14 for	Time Priority Route Table 15 for
7:00 a.m. - 7:59 a.m.	Priority 1							
	Priority 2							
	Priority 3							
	Priority 4							
	Priority 5							
	Priority 6							
	Priority 7							
	Priority 8							
8:00 a.m. - 1:59 p.m.	Priority 9							
	Priority 10							
	Priority 11							
	Priority 12							
	Priority 13							
	Priority 14							
	Priority 15							
	Priority 16							
2:00 p.m. - 7:59 p.m.	Priority 17							
	Priority 18							
	Priority 19							
	Priority 20							
	Priority 21							
	Priority 22							
	Priority 23							
	Priority 24							

These forms may be reproduced as needed by certified DBS Dealers and Technicians.

Table 44: Time Priority Route Table 9-15 (Periods 25-48)

FF8 5# (Time Priority Route Table)# (Priority)# (LCR Trunk Group)#
 (Note: Time Priority Route Tables 9-15 are not available with CPC-EX)

Time Period/ Priority Position		LCR Trunk Group (1-8)						
		Time Priority Route Table 9 for	Time Priority Route Table 10 for	Time Priority Route Table 11 for	Time Priority Route Table 12 for	Time Priority Route Table 13 for	Time Priority Route Table 14 for	Time Priority Route Table 15 for
12:00 p.m. - 1:59 p.m.	Priority 25							
	Priority 26							
	Priority 27							
	Priority 28							
	Priority 29							
	Priority 30							
	Priority 31							
	Priority 32							
12:00 a.m. - 1:59 a.m.	Priority 33							
	Priority 34							
	Priority 35							
	Priority 36							
	Priority 37							
	Priority 38							
	Priority 39							
	Priority 40							
Weekend	Priority 41							
	Priority 42							
	Priority 43							
	Priority 44							
	Priority 45							
	Priority 46							
	Priority 47							
	Priority 46							

Select one of the following:

____ LCR Area Code Time Priority Route Table Number ____ (1-6) FF8 1# (1-6)# (000-999)# (0/1)#

____ LCR Office Code Time Priority Route Table Number ____ (1-6) FF8 2# (1-6)# (000-999)# (0/1)#

Table 45: LCR Area Code/Office Code Table (000-249)

Circle All Codes To be Included:									
000	001	002	003	004	005	006	007	008	009
010	011	012	013	014	015	016	017	018	019
020	021	022	023	024	025	026	027	028	029
030	031	032	033	034	035	036	037	038	039
040	041	042	043	044	045	046	047	048	049
050	051	052	053	054	055	056	057	058	059
060	061	062	063	064	065	066	067	068	069
070	071	072	073	074	075	076	077	078	079
080	081	082	083	084	085	086	087	088	089
090	091	092	093	094	095	096	097	098	099
100	101	102	103	104	105	106	107	108	109
110	111	112	113	114	115	116	117	118	119
120	121	122	123	124	125	126	127	128	129
130	131	132	133	134	135	136	137	138	139
140	141	142	143	144	145	146	147	148	149
150	151	152	153	154	155	156	157	158	159
160	161	162	163	164	165	166	167	168	169
170	171	172	173	174	175	176	177	178	179
180	181	182	183	184	185	186	187	188	189
190	191	192	193	194	195	196	197	198	199
200	201	202	203	204	205	206	207	208	209
210	211	212	213	214	215	216	217	218	219
220	221	222	223	224	225	226	227	228	229
233	231	232	233	234	235	236	237	238	239
240	241	242	243	244	245	246	247	248	249

Note:

There are no default settings for LCR. All applicable appropriate area codes and office codes must be entered.

Select one of the following:

____ LCR Area Code Tie Priority Route Table Number ____ (1-6) FF8 1# (1-6)# (000-999)# (0/1)#

____ LCR Office Code **Time** Priority Route Table Number ____ (1-6) FF8 2# (1-6)# (000-999)# (0/1)#

Table 46: LCR Area **Code/Office** Code Table (250-499)

Circle All Codes To be Included:									
250	251	252	523	254	256	256	257	258	259
260	261	262	263	264	265	266	267	268	269
270	271	272	273	274	275	276	277	278	279
280	281	282	283	284	285	286	287	288	289
290	291	292	293	294	295	296	297	298	299
300	301	302	303	304	305	306	307	308	309
310	311	312	313	314	315	316	317	318	319
320	321	322	323	324	325	326	327	328	329
330	331	332	333	334	335	336	337	338	339
340	341	342	343	344	345	346	347	348	349
350	351	352	353	354	355	356	357	358	359
360	361	362	363	364	365	366	367	368	369
370	371	372	373	374	375	376	377	378	379
380	381	382	383	384	385	386	387	388	389
390	391	392	393	394	395	396	397	398	399
400	401	402	403	404	405	406	407	408	409
410	411	412	413	414	415	416	417	418	419
420	421	422	423	424	425	426	427	428	429
430	431	432	433	434	435	436	437	438	439
440	441	442	443	444	445	446	447	448	449
450	451	452	453	454	455	456	457	458	459
460	461	462	463	464	465	466	467	468	469
470	471	472	473	474	475	476	477	478	479
480	481	482	483	484	485	486	487	488	489
490	491	492	493	494	495	496	497	498	499

Note:

There are no default settings for LCR. All applicable appropriate area codes and **office** codes must be entered.

Select one of the following:

___ LCR Area Code Time Priority Route Table Number ___ (1-6) FF8 1#(1-6)#(000-999)#(0/1)#
 ___ LCR Office Code Tie Priority Route Table Number ___ (1-6) FF8 2#(1-6)#(000-999)#(0/1)#

Table 47: LCR Area Code/Office Code Table (500-749)

Circle All Codes To be Included:									
500	501	502	503	504	505	506	507	508	509
510	511	512	513	514	515	516	517	518	519
520	521	522	523	524	525	526	527	528	529
530	531	532	533	534	535	536	537	538	539
540	541	542	543	544	545	546	547	648	549
550	551	552	553	554	555	556	557	558	559
560	561	562	563	564	565	566	567	568	569
570	571	572	573	574	575	576	577	678	579
580	581	582	583	584	585	586	587	588	589
590	591	592	593	594	595	596	597	598	599
600	601	602	603	604	605	606	607	608	609
610	611	612	613	614	615	616	617	618	619
620	621	622	623	624	625	626	627	628	629
630	631	632	633	634	636	636	637	638	639
640	641	642	643	644	645	646	647	648	649
650	651	652	653	664	656	656	657	668	659
660	661	662	663	664	665	666	667	668	669
670	671	672	673	674	675	676	677	678	679
680	681	682	683	684	685	686	687	688	689
690	691	692	693	694	695	696	697	698	699
700	701	702	703	704	705	706	707	708	709
710	711	712	713	714	715	716	717	718	719
720	721	722	723	724	725	726	727	728	729
730	731	732	733	734	735	736	737	738	739
740	741	742	743	744	746	746	747	748	749

Note:

There are no default settings for LCR. All applicable appropriate area codes and office codes must be entered.

Check one of the following:

____ LCR Area Code Time Priority Route Table Number ____ (1-6) FF8 1# (1-6)# (000-999)# (0/1)#

____ LCR Office Code Time Priority Route Table Number ____ (1-6) FF8 2# (1-6)# (000-999)# (0/1)#

Table 48: LCR Area Code/Office Code Table (750-999)

Circle All Codes To be Included:									
750	751	752	753	754	755	756	757	758	759
760	761	762	763	764	765	766	767	768	769
770	771	772	773	774	775	776	777	778	779
780	781	782	783	784	785	786	787	788	789
790	791	792	793	794	795	796	797	798	799
800	801	802	803	804	805	806	807	808	809
810	811	812	813	814	815	816	817	818	819
820	821	822	823	824	825	826	827	828	829
830	831	832	833	834	835	836	837	838	839
840	841	842	843	844	845	846	847	848	849
850	851	852	853	854	855	856	857	858	859
860	861	862	863	864	865	866	867	868	869
870	871	872	873	874	875	876	877	878	879
880	881	882	883	884	885	886	887	888	889
890	891	892	893	894	895	896	897	898	899
900	901	902	903	904	905	906	907	908	909
910	911	912	913	914	915	916	917	918	919
920	921	922	923	924	925	926	927	928	929
930	931	932	933	934	935	936	937	938	939
940	941	942	943	944	945	946	947	948	949
950	951	952	953	954	955	956	957	958	959
960	961	962	963	964	965	966	967	968	969
970	971	972	973	974	975	976	977	978	979
980	981	982	983	984	985	986	987	988	989
990	991	992	993	994	995	996	997	998	999

Note:

There are no default settings for LCR. All applicable appropriate area codes and office codes must be entered.

