

www.orphancameras.com



Sign of GOOD DESIGN

PETRI HALF SEVEN

18 × 24mm



INSTRUCTION BOOKLET

PETRI Camera Company, Inc.

1. Umejima-machi, Adachi-ku, Tokyo, Japan
Service Centers: New York, St. Louis, Los Angeles, The Hague, Sydney, Montreal, Okinawa, Hong Kong, Singapore, Taipei, Auckland.

Printed in Japan

Specifications of PETRI HALF 7 CAMERA

Type: Fully automatic 35 half-size (24x18mm) camera.

Lens: Petri f2.8/28mm. 3 groups. 4 elements. amber coated.

Shutter: Program type Petri-S: 1/30 to 1/250 sec.

Aperture: In using flash, the aperture set in "Manual" to : 2.8, 4, 5.6, 8, 11, 16 and 22.

Synchro: X contact.

Exposure meter: Fully automatic. Coupled range : LV8-17 with ASA 100.

Film advance: Automatic self-cocking and film advance by single stroke of knob. With double exposure prevention device.

Finder: Blue-colored finder with bright frame and parallax correction mark.

Exposure counter: Automatic resetting. Film rewinding by crank.

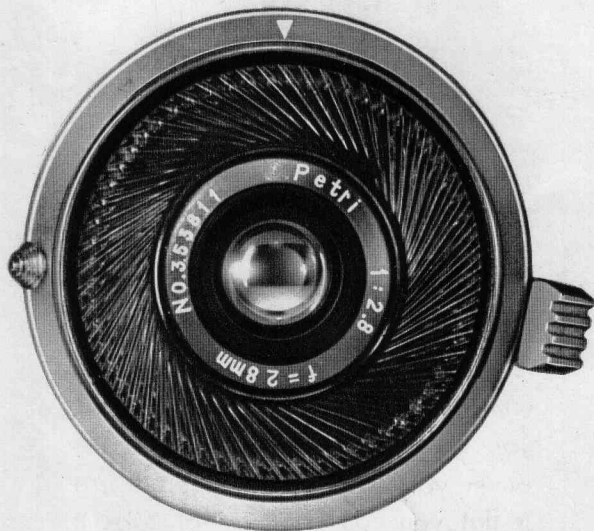
Focusing: Three-zone focusing—near, middle and far — pictures for each zone visible in the finder by turning lever.

Dimension: 103.6 x 72 x 43.5mm. 340 grams.

Accessories: Filter 40.5mm screw-in. Lens hood 42mm slip-on.

PETRI HALF 7

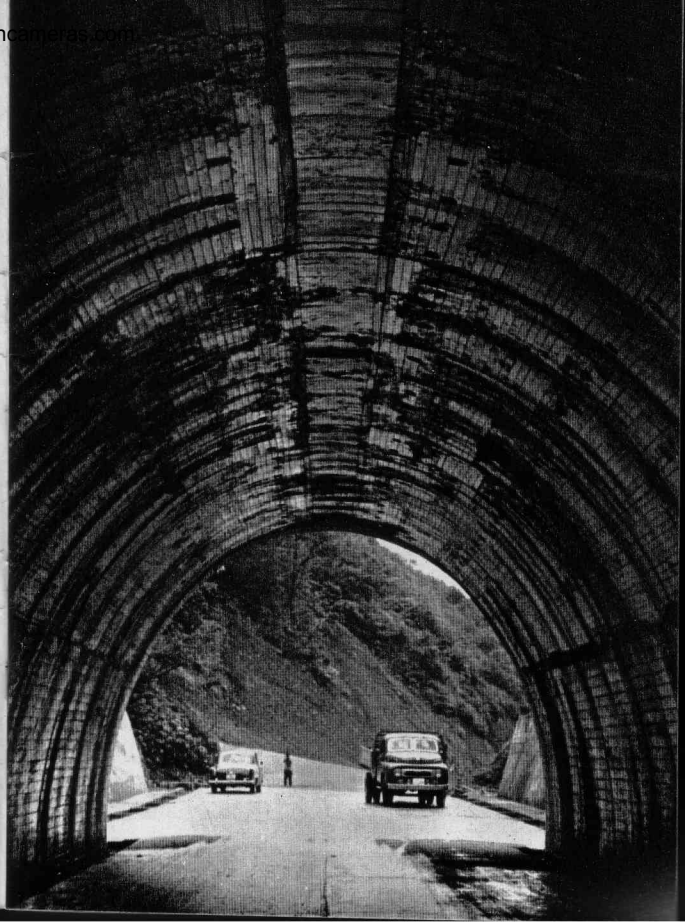
SEVEN



7 Attractive Features of PETRI HALF-7

1. Light and Compact.

Today everybody is crazy over transistor pocket radio, portable TV and compact car. Why? Because they are light and compact. The same thing can be said about PETRI HALF-7. The weight of camera is only 340 grams and you can carry it in your pocket or in your handbag. As the camera is flat you can put it in or take it out of your pocket very smoothly. Thus, the chances of missing a never-again-shot are small.





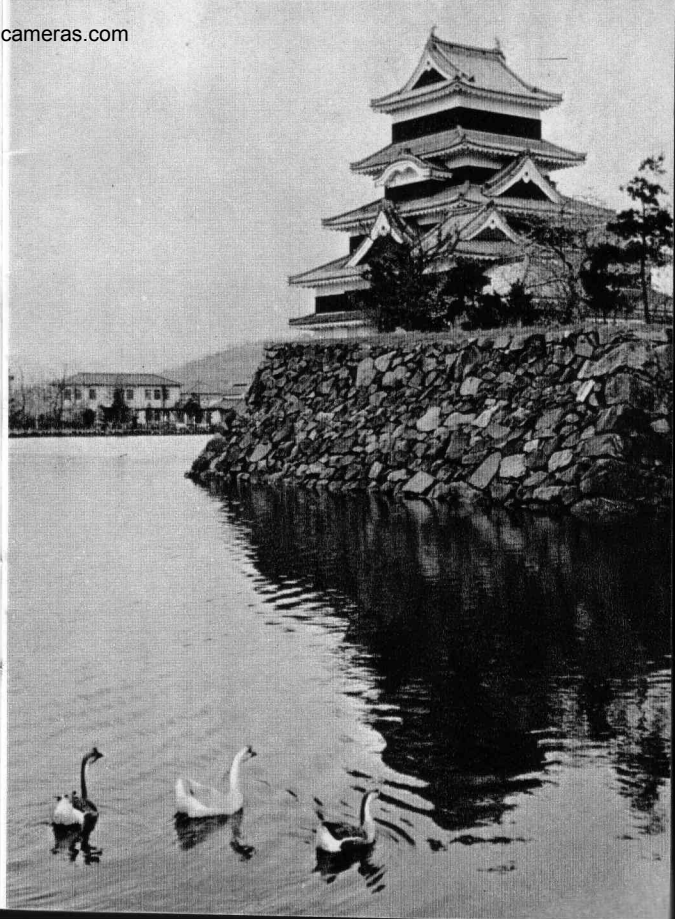
2. HALF SIZE is ECONOMICAL and USEFUL

The picture size is 18 x 24mm and it is the half size of standard 35 mm film. You can take 40 pictures with 20 exposure-film, and 72 exposures with 36-exposure film. You can economize 50% in film developing and printing costs. The half-size color film mount is available for slide projection. This size also can be enlarged to more than 25x30cm and still retain its sharpness. Enjoy picture-taking twice as long with PETRI HALF-7.



3. E.E. system does all thinking for exposure-setting.

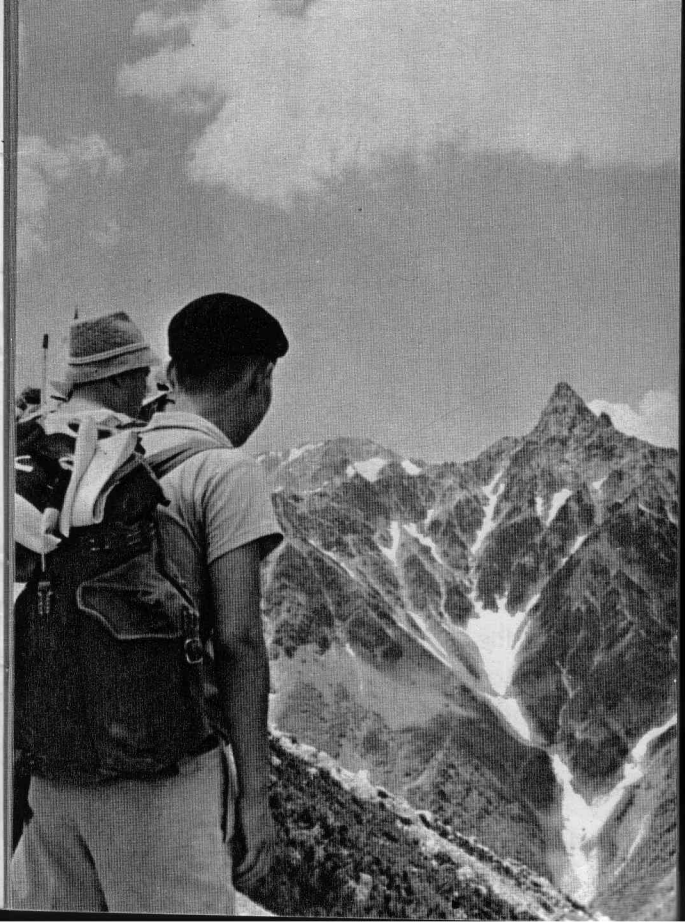
The complicated calculation for setting the exposure is troublesome for photographer in haste. The superlative E.E. system does everything FOR YOU by covering the wide range from . L. V. 8 to L. V. 17. This system gives you small aperture for quick-moving subject and large aperture for dark subject automatically. For the other camera, you have to set the shutter speed in advance, but PETRI HALF-7 does the whole work FOR YOU.





4. CIRCLE-EYE System does complicated exposure calculation FOR YOU...

With other cameras, you have to adjust the exposure setting when using filter with it. But in using PETRI HALF 7, you do not have to check the exposure multiple nor turn the aperture dial as the filter itself covers the photocell of CIRCLE-EYE lens, and CIRCLE-EYE system does all calculation for proper exposure according to the filter in use.



5. Blue-MAGIC-Finder that shows the distance in itself. . .

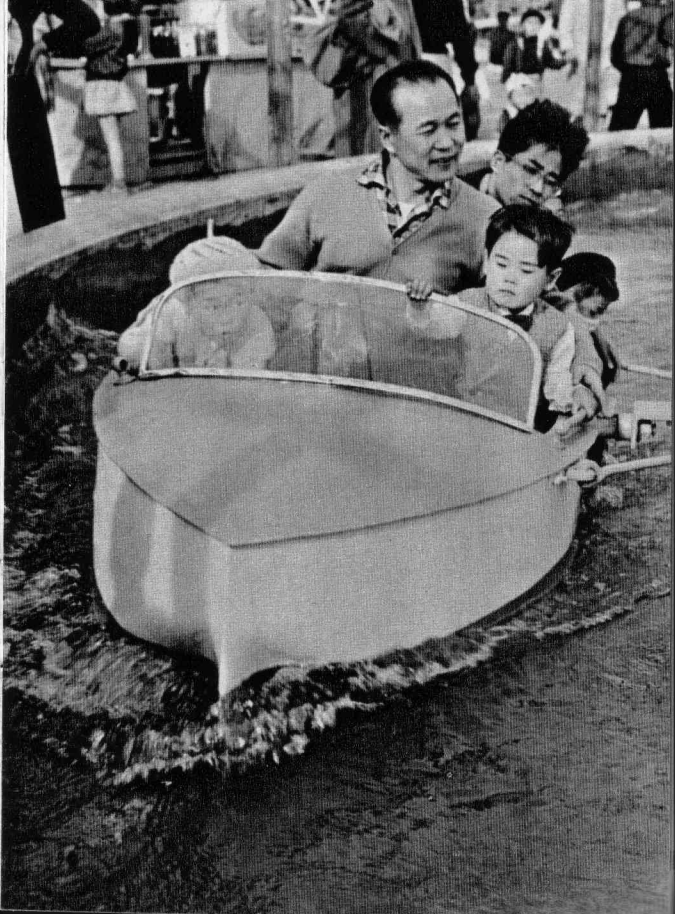
PETRI HALF 7 has the easy-to-look viewfinder that has bright frame and parallax correction marking in itself. This finder is made of light blue glass and it is helpful to look at the dark subject very easily. As you turn the focus adjusting lever, you will note three pictures; portrait, human groups and mountain. Choose the picture in your photography. Also the coupled range needle is visible in the upper part of finder.






6. Sharp PETRI f2.8/28mm lens for quick snap - photography. . .

PETRI f2.8/28mm amber - coated, color-corrected lens has superlative descriptionability. Since the lens has excellent resolving power, images are photographed clearly and sharp even in all the picture-corners with lens remained wide open at 2.8. This made it ideal for color photography. PETRI LENS is a short-focusing lens, so you do not have to worry about focusing because the depth-of-field is very deep.



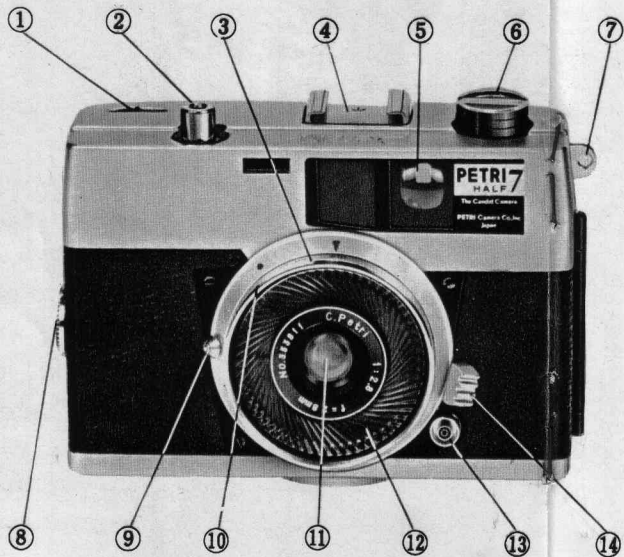


7. Synchro-photography can be made easily by "Manual" Operation

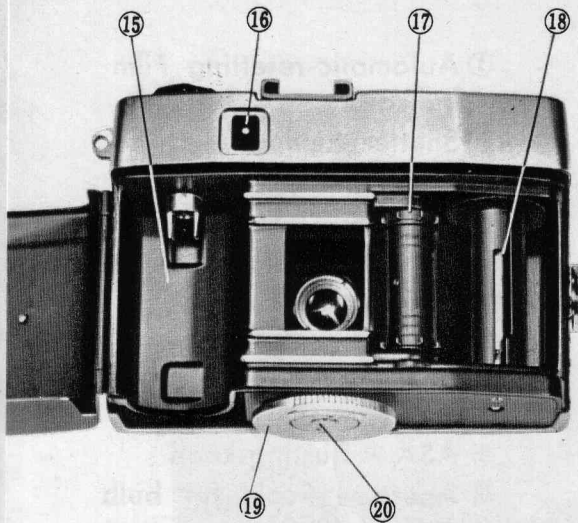
Though PETRI HALF 7 has fully-automatic for both shutter speed and aperture, synchro-photography can be made by "Manual" operation. Turn the indication mark (▲) to the aperture scale in red beside the pictures of bulb and strobe, then the necessary F-value for synchro-photography can be obtained automatically. Shutter speed for manual aperture is fixed at 1/30 second, so synchronization can easily made with both strobe and bulb.



Description of Parts



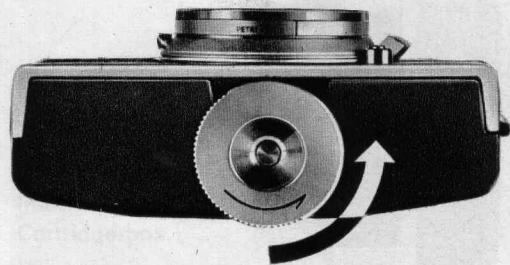
- ① Automatic-resetting Film Indicator
- ② Shutter Release Button
- ③ Film ASA Scale
- ④ Accessory Shoe
- ⑤ Blue-MAGIC - Scope Viewfinder
- ⑥ Film Rewind Crank
- ⑦ Hang Loop
- ⑧ Back-cover Lock
- ⑨ ASA Adjusting-knob
- ⑩ Aperture Scale for bulb & strobe
- ⑪ PETRI f2.8/28mm Lens
- ⑫ CIRCLE-EYE Photo-cell
- ⑬ Synchro-terminal
- ⑭ Focal-adjusting Lever



- | | |
|-----------------|---------------------|
| ⑮ Cartridge-box | ⑱ Take-up spool |
| ⑯ Eye-piece | ⑲ Film Advance Dial |
| ⑰ Sprocket | ⑳ Return Button |

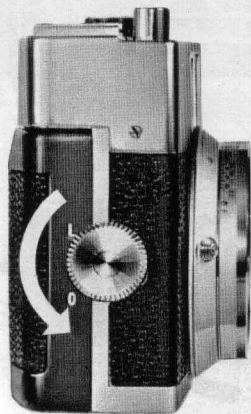
How to use Film Advance Dial

While shifting your camera, turn Film Advance Dial to the arrow-marking at the degree of 90 with your thumb-finger. In this action, the dial advances a frame of film and cocks the shutter simultaneously. Turn the dial to the end. If the turning is incomplete, the dial does not get back to the original position.



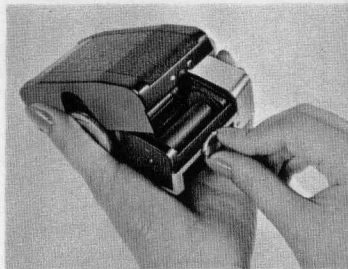
How to open the back-cover

Turn Cover Lock located on the side of camera-body to the marking, "O", and it will be unlocked. The cover is now opened with hinge. When closing the cover, push the cover to the body and turn the lock to the marking, "L".

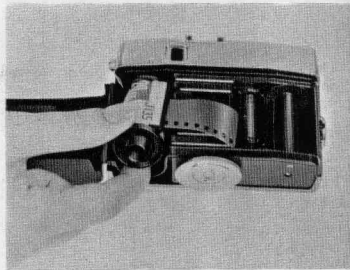


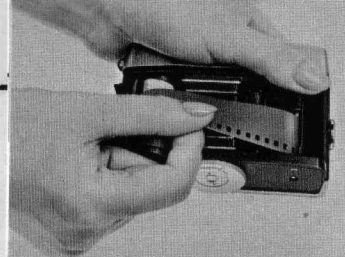
Film Loading

Open the back-cover.

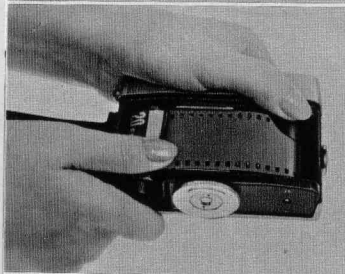


Insert film into Cartridge-box.

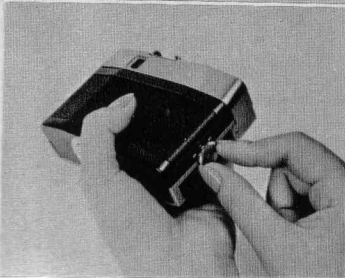




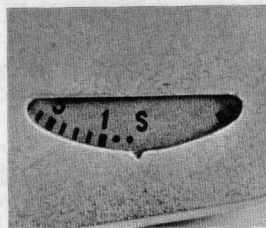
Put the end of film into the slot of take-up spool. Be sure that the sprocket holes in the film line up with the projection on the take-up spool.



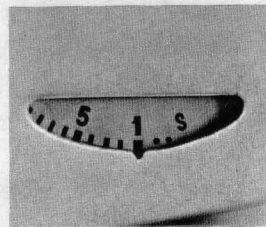
Try film-advancing by turning take-up spool with finger.



Check if the sprocket holes and the teeth of take-up spool fit perfectly and close the back-cover.



At this time, film exposure indicator shows the marking, S.



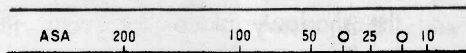
On the 3rd advancement, your 1st exposure is ready for shutter release.

Note in film-loading

- * Use 40 or 72 exposure 35mm film with your Petri Half 7.
- * Avoid the direct sun-light and select the shadowy place for your film-loading.

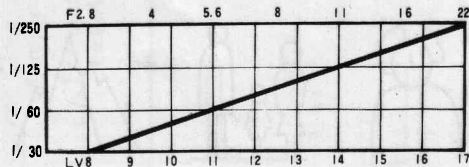
How to use new Electric-Eye system

After film-loading, set the ASA indicator to ASA of film in use. On the lens barrel, you will note the numbers: ASA 200, 100, 50, (32), 25, (16), 10 and they are the ASA numbers. When using XX-film, set ASA indicator (\blacktriangle) to 100, with XXX to 200 by turning the ASA adjusting knob. That's all. Just aim your camera to the subject and release the shutter button.



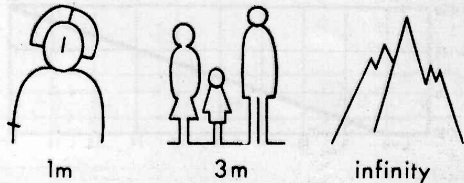
NEW Electric-Eye system

Between the setting of f2.8 with 1/30 second and f22 with 1/250 second, the exposure can be made continuously without setting everytime. For the bright subject, this system gives automatically small aperture and fast shutter-speed, and for the dark subject it gives wide aperture and slow shutter speed. This changes are made automatically as the thick line in the chart below indicates their combination.



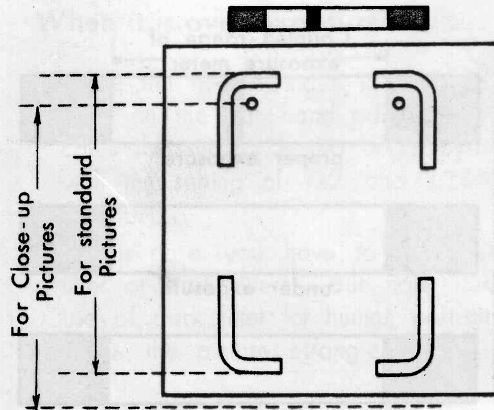
How to focus

While looking through the viewfinder, you will notice, as you turn the focal adjusting lever, three pictures, which are the human portrait for close-up picture-taking (1m), group picture for middle distance photography (3m) and the picture of mountain for the distant view (infinity). These come out with click-stop turning. According to the distance to the subject, select one of three pictures. The focal length of PETRI HALF 7 is only 28mm, so the depth-of-field is very deep and you can get sharp focusing with the above three focusing markings.



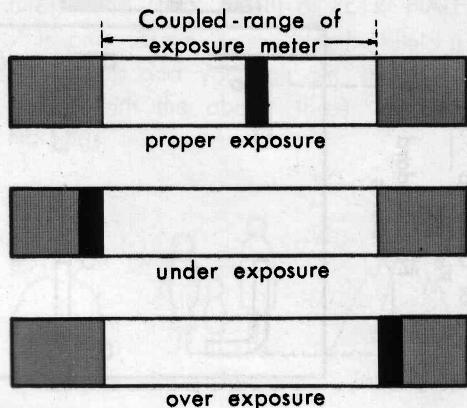
How to look through the viewfinder

As you look through the viewfinder, you will note a bright frame. The subject within the frame can be photographed. However, for your close-up photography, you have to use two dots in the upper parts in the frame as the line for preventing the lopped-off head pictures. (Parallax Correction Marks)



The needle visible in the viewfinder

As you look through the finder, you will see the green needle in the upper parts of frame. This needle couples with exposure meter and the red parts on both ends show under or over exposures. So while it stays away from those red parts, Electric-Eye system is on work.



When it is under-exposure

- * While the needle stays in the red zone, (in the left) your picture-taking is underexposed even with f2.8 and 1/30 second.
- * In this case, you have to use higher ASA film, or you have to make synchro-photography.

When it is over-exposure

- * While the needle stays in the red zone on the right-hand side, it indicates the subject is too bright even with the setting of f22 and 1/250 second.
- * In this case, you have to use ND filter or dark filters. But note the use of dark filter for human portrait gives the pictures strong contrast.

How to hold your camera

Hold your camera with both hands and put the back of it on either your cheek or nose, then stop breathing while your releasing the shutter button. It is preferable that your both elbows touch your side to stabilize your body.



Horizontal Position



Vertical Position

Synchro-Photography

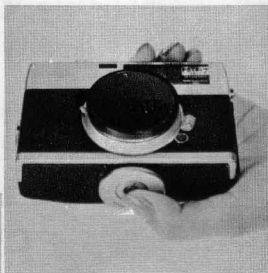


To photograph the fast-moving subjects in the dark, you have to make shutter release and bulb synchronized. First turn ASA indicator ring to the red scale beside the pictures of bulb and strobe. At this moment, E.E. system is released and you can set the aperture manually. And the shutter speed is fixed at 1/30 second all the times. Synchronization can be made with M-class, F-class bulbs and strobe.

Film Unloading

After all exposures were made, you have to unload the film.

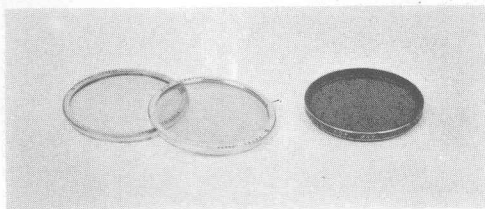
Push the return button on the bottom of camera body. Pull the rewind crank handle and turn it as the arrow marking.



When you feel no resistance, open the back cover to remove the cartridge from the compartment.



PETRI HALF 7 Filters



Screw-in type with metal frame and its diameter 40.5mm. You can enjoy E.E. photography without worrying about the exposure multiple.

- UV:** Transparent, it is to absorb ultra-violet rays.
 - YI:** Light-yellow, to photograph the outdoor portrait in natural tone.
 - Y2:** Yellow, for photographing the blue-sky to get landscape in the nature.
 - YA3:** Orange, for photographing distant-view
 - RI:** Red, to photograph infrared rays.
- For color photography:
- W4**(for moisture adjusting) **C4** (for cold adjusting)
 - C8**(for flash photography) **C12** (for flood-lump photography)