



**AT&T**

**SPIRIT™**  
Communications System  
Model 2448  
1224 Controller  
Customer Installation  
Instructions

## Table of Contents

Overview of System	1
Step 1 Plan Your System	2
Step 2 Mount Controller	3
Mount the Power Supply Unit	3
Mount Controller on Wall	4
Install Line and Station Cards	5
Test the Incoming Telephone Lines	5
Test the Controller	5
Connect Telephone Lines to Controller	6
Step 3 Wiring Runs	7
Business (4-Pair) Wiring	8
List of Materials	8
Mount Jack Panel Boxes	9
Run Cable to all Telephone Locations	10
Install Modular Jacks	11
Customer Convenience Wiring	13
List of Materials	13
Install Modular Plugs and Wire Junction Boxes	13
Secure Telephone Wire	13
Install Modular Jacks	13
Step 4 Install Telephone Sets	15
Desk Mount	15
Wall Mount	15
Step 5 Connect Controller to Wiring Runs	16
Step 6 Install Optional Equipment	17
Step 7 Put the Panel Back On	18
Step 8 Power Up the System	18
Troubleshooting	19
Service Technician Diagnostics	20
Controller Self Test	20
What Each Test Does	21
Repairing a Problem	21
Key to Indicator Lights During Controller Self Test	24
Interference Information; FCC Regulations Pertaining to this Equipment	25



## Step 1 Plan Your System

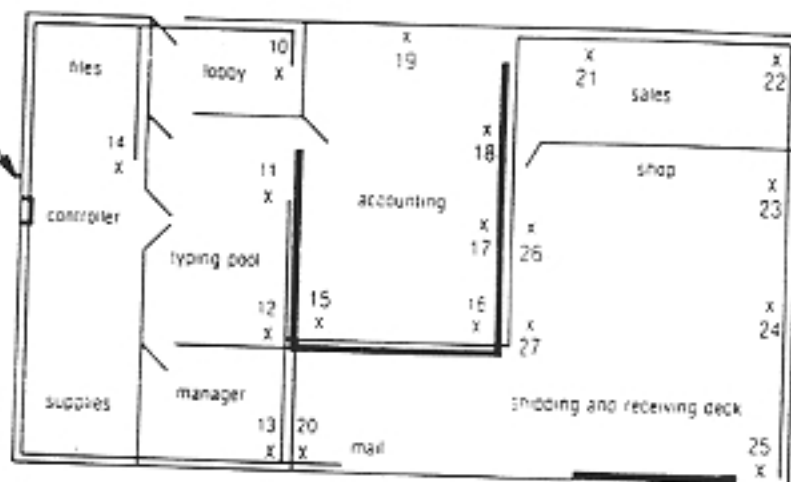
Draw a floor plan of your business, showing the location of the network interface jacks, where your local telephone lines come into the building or office. You will want to install your controller close to these jacks. Be sure an AC outlet not controlled by a switch is available.

Show on the floor plan the location of each telephone in your system. Also show the distances of the wiring run from the controller to each telephone location.

Below is a sample floor plan to guide you in making your own floor plan.

*NOTE: If you need to install SPIRIT Communications System telephones in another building but not more than 1000 feet from the controller, contact your AT&T representative to order an in-range, out-of-building (IROB) protection device.*

**INCOMING TELEPHONE LINE**  
(also called Network Interface Jacks)



Set 10 30'	Set 15 75'	Set 20 100'	Set 25 170'
Set 11 40'	Set 16 90'	Set 21 90'	Set 26 115'
Set 12 50'	Set 17 105'	Set 22 105'	Set 27 100'
Set 13 60'	Set 18 120'	Set 23 130'	
Set 14 30'	Set 19 45'	Set 24 150'	

*NOTE: Be sure cords do not cross hallways. Do not run cords inside air plenums and ducts or along hot pipes.*

## Step 2 Mount Controller

You will need the following to mount your controller on the wall:

- eight screws  
For drywall, tile, or masonry use size 6 to 8 x  $\frac{3}{4}$  inch plastic anchors with size 6 x 1 inch slotted screws. For wood, use size 6 x 1 inch slotted round head wood screws. These screws are available at your local hardware store.
- 12-inch ruler
- flathead screwdriver
- drill with the drill bit recommended for the type of screws
- pencil

Choose a location within five feet of the network interface jacks, where the local telephone company lines enter the building, and within five feet of a grounded (three-prong) AC outlet that is not controlled by a switch. The power supply unit will be plugged into this outlet and the controller connected to the power supply unit. The controller and power supply unit must be within six inches of each other with the power supply on the left side of the controller.

*NOTE: Try to position the controller so that there is an additional two feet of free wall space to the right to allow for future expansion.*

Be sure that the controller is in a well-ventilated area with a temperature range of 40° F to 100° F, and free of excessive dust and moisture. The controller should be at least two feet from the floor.

### ■ A. Mount the Power Supply Unit

Mount the power supply unit on the far left side of the chosen location, making sure it is within five feet of a grounded AC outlet not controlled by a switch.

Drill two holes  $4\frac{1}{4}$  inches apart and install two mounting screws. Loosen the screws enough to hang the power supply unit. Mark the location of the two holes on the bottom of the unit and remove the unit from the wall. Drill two more holes. Reinstall the power supply unit onto the wall. Insert the two bottom mounting screws, and firmly tighten all four screws.

