



Venture IP Telephone System

**GATEWAY
INSTALLATION
GUIDE**



Table of Contents

Introduction	1
About this Guide.....	1
Line Power Requirements.....	1
Compliance	2
Overview	2
Venture IP Gateway Hardware	2
Power	3
Network Connections.....	3
External Paging.....	3
Music on Hold	3
Phone Lines	4
Bypass Port	4
LED	4
Technical Specifications	4
Installation.....	5
Maintenance and Repair.....	5
Troubleshooting	6
Limited Warranty	7

Introduction

About this Guide

This guide specifically addresses the installation and technical specifications of the VentureIP Gateway. The **VentureIP 480i System Guide** offers more detailed technical instructions regarding network installation, configuration, downloads and set management. The **VentureIP 480i User Guide** provides basic installation instructions and describes all user-enabled features for the VentureIP 480i telephone.

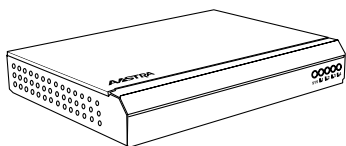
Line Power Requirements

The Venture IP Gateway operates from an 802.3af Power over Ethernet (PoE) unit or from the provided 48VDC/0.2A wall adaptor.

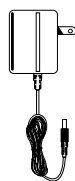
CAUTION: The socket outlet, if used, shall be located near the equipment and shall be easily accessible by the user.

CAUTION: Only CSA/UL approved power adaptors shall be used.

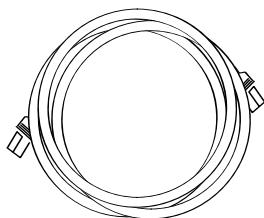
NOTE: The Venture IP Gateway does not require a power adapter if the LAN cable is IEEE 802.3af, Power over LAN enabled.



gateway



power supply



Ethernet Cable



Four Line Cords

Compliance

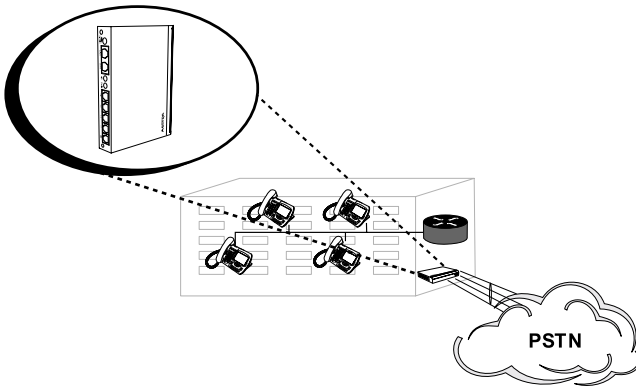
The Venture IP Gateway is a Class B device that complies with Part 68 and Part 15 of the FCC Rules, and Canadian requirements CS-03 and ICES-003 Class B EMI requirements. Operation is subject to the following two conditions: (1) this device may not cause harmful interference and (2) this device must accept any interference received, including interference that may cause undesirable operation.

Overview

The Venture IP Gateway provides a connection with the local telephone network (PSTN). See Figure 1. The Venture IP Gateway is added to the network the same way as a telephone: simply plug it in.

The Venture IP Gateway supports up to four telephone lines. Multiple Venture IP Gateways can exist in the same network, which increases the number of available ports.

Figure 1: Network Configuration



Venture IP Gateway Hardware

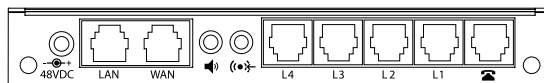
This section describes the Venture IP Gateway hardware, including:

- Power
- Network Connections
- Paging
- Music on Hold
- Phone Lines
- Bypass Port
- LEDs
- Technical Specifications

Figure 2: Venture IP Gateway Front View



Figure 3: Venture IP Gateway Rear View



Power

The Venture IP Gateway operates from an 802.3af Power over Ethernet (PoE) unit or from the provided 48VDC/0.2A wall adaptor.

Network Connections

The Venture IP Gateway has two Ethernet connections: a LAN port and a WAN port. Both use RJ-45 connectors. The LAN connects to the internal IP network; the WAN port is for future use. Each port is 10/100Base-T.

Each port has two LEDs: a Link and Activity LED (left of the port) and a Speed LED (right of the port). See Figure 3. The Link and Activity LED indicates a link when lit solid green; it indicates activity when flashing green. The Speed LED indicates 10Base-T when off; it indicates 100Base-T when lit solid yellow.

External Paging

The Venture IP Gateway has an Audio Output jack for paging. It uses a standard 3.5 mm stereo mini-jack. Ensure that the volume is set to 50%.

Music on Hold

The Venture IP Gateway has a Music Input jack for Music on Hold (MOH). It uses a standard 3.5 mm stereo mini-jack. Ensure that the music source volume is set to 50%.

Phone Lines

The Venture IP Gateway has four phone lines numbered 1 through 4. The RJ-11 cables connect to the telephone network through your Service Provider.

Bypass Port

An analog telephone set can be plugged into the Bypass Port. In case of power failure to the Gateway, the analog telephone becomes operational to let you keep your connection to the telephone network. In the event of a power failure Line 1 connects to the Bypass port internally.

Note: Please ensure a phone line is connected to Line 1.

LED

There are five LEDs on the front of the Venture IP Gateway. The left-most LED is the system LED. It turns red on start-up and changes to green when the system is up and running. The other four LEDs reflect the status of the phone lines. If an LED is off, the line is not connected or unavailable. If an LED is green, the line is connected and available. If an LED is flashing green, the line is connected but in use.

Technical Specifications

Analog Ports	4FXO Ports, 1 Emergency Bypass Port, RJ11 / RJ45 Plug Types
Network Ports	100 Base-T; RJ-45 Connector
Music Input	Standard 3.5 mm stereo mini-jack
Audio Output (Paging)	Standard 3.5 mm stereo mini-jack
CODEC Options	G.711 PCM, G.723.1, G.729A
Power	ETF 802.3af Power over Ethernet 48VDC/0.2A Wall plug (optional)
Certifications	CSA C22.2 No.60950 NRTL/C, FCC Part 15, Subpart B Class B, TIA/EIA-968, ICES-003, CS-03
Weight	1.9 lbs (.8 kg)
Operating Temperature/ Humidity	32° F to 104° F (0° C to 40° C) 10% to 95% non condensing
Storage Temperature/ Humidity	14° F to 140° F (-10° C to 40° C) 5% to 90% non condensing

Installation

To install the Venture IP Gateway, follow these steps:

1. Select a flat, well-ventilated space.
2. If you have 802.3af PoE, plug in your Ethernet cable to the LAN port and the unit will power up.
3. If you don't have PoE, plug in the provided 48VDC/0.2A wall adaptor and plug your Ethernet cable in to the LAN port.

The unit will power up.

4. Plug in your phone line(s).

Note: Plug an analog phone into the Bypass port to ensure your phone connection is not interrupted in the event of a power failure. There is no dial tone while the Venture IP Gateway has power.

The system LED turns red on start-up and changes to green when the system is up and running.

Maintenance and Repair

The Venture IP Gateway is a field replaceable unit. There are no user-serviceable parts inside the switch. For repairs, return the unit to Astra Technologies.

Troubleshooting

The lights at the LAN port are off or blinking

The lights on the LAN port indicate the port's speed, status, and activity. Refer to LEDs on page 5 for a description of these indicators.

The SYS light is solid red

A red SYS light indicates that the Venture IP Gateway is booting and is not yet ready to make external calls. Check to ensure that the LAN port is connected and that there is at least one phone line connected to the unit.

A phone line is connected, but the LINE light for that port is off

The LINE light indicates the status of the respective phone line connected to the Venture IP Gateway PSTN interface. (See LEDs on page 5 for details). Ensure that the phone line is not already in use by another analog telephone. Verify that the phone line is functioning properly by connecting an analog telephone to the line and listening for dial tone.

There's no dial tone on the phone when plugged into the Bypass port

An analog telephone connected to the Bypass port works only when power is removed from the Venture IP Gateway. Ensure that a phone line is connected to Line 4 of the Venture IP Gateway.

Limited Warranty

Aastra Telecom warrants this product against defects and malfunctions during a one (1) year period from the date of original purchase. If there is a defect or malfunction, Aastra Telecom shall, at its option, and as the exclusive remedy, either repair or replace the telephone set at no charge, if returned within the warranty period.

If replacement parts are used in making repairs, these parts may be refurbished, or may contain refurbished materials.

If it is necessary to replace the telephone set, it may be replaced with a refurbished telephone of the same design and color. If it should become necessary to repair or replace a defective or malfunctioning telephone set under this warranty, the provisions of this warranty shall apply to the repaired or replaced telephone set until the expiration of ninety (90) days from the date of pick up, or the date of shipment to you, of the repaired or replacement set, or until the end of the original warranty period, whichever is later. Proof of the original purchase date is to be provided with all telephone sets returned for warranty repairs.

Exclusions

Aastra Telecom does not warrant its telephone sets to be compatible with the equipment of any particular telephone company. This warranty does not extend to damage to products resulting from improper installation or operation, alteration, accident, neglect, abuse, misuse, fire or natural causes such as storms or floods, after the telephone is in your possession.

Aastra Telecom shall not be liable for any incidental or consequential damages, including, but not limited to, loss, damage or expense directly or indirectly arising from the customers use of or inability to use this telephone, either separately or in combination with other equipment. This paragraph, however, shall not apply to consequential damages for injury to the person in the case of telephones used or bought for use primarily for personal, family or household purposes.

This warranty sets forth the entire liability and obligations of Aastra Telecom with respect to breach of warranty, and the warranties set forth or limited herein are the sole warranties and are in lieu of all other warranties, expressed or implied, including warranties or fitness for particular purpose and merchantability.

Warranty Repair Services

Should the set fail during the warranty period;

In North America, please call 978-436-4111 for further information.

Outside North America, contact your sales representative for return instructions.

You will be responsible for shipping charges, if any. When you return this telephone for warranty service, you must present proof of purchase.

After Warranty Service

Aastra Telecom offers ongoing repair and support for this product. This service provides repair or replacement of your Aastra Telecom product, at Aastra Telecom's option, for a fixed charge. You are responsible for all shipping charges. For further information and shipping instructions;

In North America, contact our service information number: 978-436-4111.

Outside North America, contact your sales representative.

Note: Repairs to this product may be made only by the manufacturer and its authorized agents, or by others who are legally authorized. This restriction applies during and after the warranty period. Unauthorized repair will void the warranty.

A

About this Guide 1

B

Bypass Port 4

C

Compliance 2

E

External Paging 3

I

Installation 5

L

LED 4

Line Power Requirements 1

M

Maintenance and Repair 5

Music on Hold 3

N

Network Connections 3

O

Overview 2

P

Phone Lines 4

Power 3

T

Technical Specifications 4

Troubleshooting 6

V

Venture IP Gateway Hardware 2

W

Warranty 7

If you've read this owner's manual and consulted the Troubleshooting section and still have problems, please visit our website at www.aastra.com or call 978-436-4111 for technical assistance.

© Aastra Telecom Inc. 2005 41-0086-00 Rev 00