



**NxIQ**  
**Nx56/64 Module**  
**with**  
**Frame-Relay Performance Monitoring**

**1200.255L1**

**USER MANUAL**

61200.255L1-1  
April 1998

**Trademark Information:**

OpenView is a registered trademark of Hewlett-Packard Company.  
SunNet Manager is a registered trademark of Sun Microsystems, Inc.  
Netview is a registered trademark of IBM.  
IQ View is a trademark of ADTRAN.



901 Explorer Boulevard  
P.O. Box 140000  
Huntsville, AL 35814-4000  
Phone: (256) 963-8000

© 1998 ADTRAN, Inc.  
All rights reserved.  
Printed in USA.

## ABOUT THIS MANUAL

This manual is arranged so you can quickly and easily find the information you need. The following is an overview of the contents of this manual:

- Chapter 1, Introduction, familiarizes you with frame relay networks and NxIQ highlights.
- Chapter 2, Installation, describes the NxIQ connectors (pin assignments are given in Appendix A) and provides an installation diagram.
- Chapter 3, Operation, explains how to operate your NxIQ using either the front panel or a terminal interface.
- Chapter 4, Management Applications, provides examples of some common NxIQ applications. This chapter includes network diagrams as well as configuration examples.
- Chapter 5, Configuration Overview, explains how to access the NxIQ configuration menu and provides menu trees for both the front panel and the terminal interface.
- Chapters 6 through 8 provide brief explanations for selections made in the Configuration menus. These chapters are based on the first level menu branches of the Configuration menu: DTE Port, Network Port, and System Configuration.
- Chapter 9, Statistics, describes how to access statistical information from the NxIQ.
- Chapter 10, Diagnostics, explains how to access the NxIQ diagnostic features, including PVC loopback and ping tests.
- Chapter 11, Utility Menu, describes the utility menu for front panel operation.
- Appendix A, Pinouts, provides pinouts for the NxIQ connectors.
- Appendix B, Specifications Summary, contains product specifications.



**NOTE** *Notes provide additional useful information.*



**CAUTION** *Cautions signify information that could prevent service interruption.*



**WARNING** *Warnings provide information that could prevent damage to the equipment or endangerment to human life.*

**FEDERAL COMMUNICATIONS COMMISSION  
RADIO FREQUENCY INTERFERENCE STATEMENT:**

This equipment has been tested and found to comply with the limits for a Class A digital device, pursuant to Part 15 of the FCC Rules. These limits are designed to provide reasonable protection against harmful interference when the equipment is operated in a commercial environment. This equipment generates, uses, and can radiate radio frequency energy and, if not installed and used in accordance with the instruction manual, may cause harmful interference to radio frequencies. Operation of this equipment in a residential area is likely to cause harmful interference in which case the user will be required to correct the interference at his own expense.

Shielded cables must be used with this unit to ensure compliance with Class A FCC limits.

**WARNING** *Change or modifications to this unit not expressly approved by the party responsible for compliance could void the user's authority to operate the equipment.*

**CANADIAN EMISSIONS REQUIREMENTS**

This digital apparatus does not exceed the Class A limits for radio noise emissions from digital apparatus as set out in the interference-causing equipment standard entitled "Digital Apparatus," ICES-003 of the Department of Communications.

Cet appareil numérique respecte les limites de bruits radioélectriques applicables aux appareils numériques de Class A prescrites dans la norme sur le matériel brouilleur: "Appareils Numériques," NMB-003 édictée par le ministre des Communications.

# Table of Contents

---

## Chapter 1. Introduction

Product Overview .....	1
Understanding Frame Relay .....	2
SNMP Management .....	3
Network Manager .....	4
Agent .....	4
MIB .....	4
TELNET .....	4
Warranty and Customer Service .....	5

## Chapter 2. Installation

Unpack, Inspect, Power Up .....	7
Receipt Inspection .....	7
ADTRAN Shipments Include .....	7
Customer Provides .....	8
Installation .....	8
Placement of the Option Module .....	8
Power Connection .....	9
Attaching the Plug-On Board .....	9
Rear Panel .....	10
Control Port .....	10
V.35 Connector: DTE Data Connection .....	11
V.35 Connector: Dial Backup (DBU) Connector .....	11

## Chapter 3. Operation

Front Panel .....	13
VT 100 Terminal Connection and Operation .....	13
NXIQ Menu Structure .....	15
Main Menu .....	16
Configuration (CONFIG) .....	16
View Statistics (STATUS) .....	16
Diagnostics (TEST) .....	16
Logout (Terminal Menu Only) .....	16

---

**Chapter 4. Management Applications**

Local VT 100 Terminal Management..... 20

    Minimum Configuration Requirements for

        VT 100 Management..... 21

        Baud Rate ..... 21

        Control Port Mode ..... 21

Out-of-band Management..... 21

    Minimum Configuration Requirements

        for Out-of-Band Management..... 22

        Control Port Mode ..... 22

        IP Address..... 22

        Read Community Name ..... 22

        Write Community Name ..... 23

        Trap Manger DLCI..... 23

        Trap Manager IP ..... 23

        Trap Manger Port..... 23

Inband Management ..... 23

    Local PVC Management..... 23

        Minimum Configuration Requirements for Local PVC

            Management ..... 24

            IP Address..... 24

            Management DLCI ..... 25

            Read Community Name ..... 25

            Write Community Name ..... 25

            Trap Manger DLCI..... 25

            Trap Manager IP ..... 25

            Trap Manger Port..... 25

    Shared PVC Management ..... 25

        Minimum Configuration Requirements for Shared PVC

            Management ..... 26

            IP Address..... 26

            Management DLCI 1 and/or DLCI 2..... 26

            Management DLCI 1 and/or DLCI 2 Mode ..... 27

            Read Community Name ..... 27

            Write Community Name ..... 27

            Trap Manger DLCI..... 27

            Trap Manager IP ..... 27

            Trap Manger Port..... 27

    Dedicated PVC Management ..... 28

        Minimum Configuration Requirements for Dedicated

            PVC Management..... 28

<b>Chapter 5. Configuration Overview</b>	
Local and Remote Configuration.....	29
<b>Chapter 6. DTE Port Configuration</b>	
Physical Layer Options (PHYS LYR OPT) .....	34
CTS Option .....	34
Forced On.....	34
Follow RTS.....	34
DSR Option .....	34
Forced On.....	34
Normal .....	34
CD Option.....	35
Forced On.....	35
Normal .....	35
TC Clock Option .....	35
Frame Relay Options (FR OPT) .....	35
T392.....	35
N392 and N393.....	35
Management DLCI (MNG DLCI).....	36
Guidelines for Configuring Management DLCI.....	36
<b>Chapter 7. Configuring the Network Port</b>	
Network Port .....	37
Physical Layer Option (PHYS LYR OPT) .....	38
Channel Bandwidth (CHANNEL RATE) .....	38
Frame Relay Options (FR OPT) .....	39
Signaling Type (SIGNAL).....	39
T391 .....	39
N391 .....	39
N392 and N393.....	40
Management DLCI 1 and 2 (DLCI 1 and 2).....	40
Management DLCI 1 and 2 Mode (DLCI 1 and 2 MODE).....	40
PVC Count .....	41
History Interval Count (HIST INT COUNT) .....	41
PVC Options (not available through front panel).....	41
DLCI.....	41
CIR (Kbps).....	41
Sequence Number Checking.....	42
Delay Measurement.....	42
Edit Next Entry .....	42
Edit Previous Entry .....	42
Delete This Entry .....	42



---

Add New Entry .....	42
<b>Chapter 8. System Configuration</b>	
System Config .....	43
Change Password (not available on front panel).....	43
IP Address .....	43
Control Port Mode (CNTL PORT MODE).....	44
Read Community Name.....	44
Write Community Name.....	45
Trap Manager DLCI (TRAP DLCI) .....	45
Trap Manager IP Address (TRAP IP ADDR) .....	45
Trap Manager Port (TRAP PRT) .....	45
History Interval Size (HIS INT SIZE) .....	45
<b>Chapter 9. Statistics</b>	
Viewing Statistical Information (Terminal Interface).....	47
Terminal Statistics Display Options .....	48
View by Interval.....	48
View by Day .....	48
Hot Keys .....	49
ESC=Menu .....	49
D=DLCI .....	49
Page (+, -).....	49
Scroll (<, >) .....	49
V=View by Day/View by Interval .....	49
DTE Port Statistics .....	50
Leads On.....	50
Interval Remaining .....	51
Signaling State .....	51
Local PVC Rx Frames .....	51
Local PVC Rx Bytes .....	51
Local PVC Tx Frames .....	51
Local PVC Tx Bytes.....	52
Signal Down Time.....	52
Signal Error .....	52
Signal Timeouts.....	52
Signal State Change .....	52
Rx Full Status.....	52
Rx LI Only .....	52
Discard Frame .....	52
Aborts .....	52

---

CRC Errors.....	52
Octet Align.....	53
Length Error .....	53
EA Violation .....	53
Encapsulation Error.....	53
Inactive DLCI .....	53
Invalid DLCI.....	53
Unrouteable.....	53
Network Port Statistics.....	53
Signaling State.....	53
Interval Remaining.....	53
Rx Frames .....	54
Rx Bytes.....	54
Maximum Rx Throughput .....	54
Average Rx Throughput.....	54
Maximum Rx Utilization.....	54
Average Rx Utilization .....	54
Tx Frames.....	54
Tx Bytes.....	54
Maximum Tx Throughput .....	55
Average Tx Throughput.....	55
Maximum Tx Utilization .....	55
Average Tx Utilization.....	55
Port UA Time .....	56
Signal Down Time .....	56
Signal Error.....	56
Signal Timeouts .....	56
Signal State Change.....	56
Rx Full Status.....	57
Tx Full Status.....	57
Rx LI Only.....	57
Tx LI Only.....	57
Async Status .....	57
Discard Frame .....	57
Aborts.....	57
CRC Errors.....	57
Octet Align.....	57
T1 State Change .....	57
T1 UA Time .....	57
Signal Loss .....	58
Telco Test .....	58
AIS Alarm .....	58

Table of Contents

---

Red Alarm .....	58
Yellow Alarm.....	58
Path Code .....	58
Line Code .....	58
Length Error.....	59
EA Violation.....	59
Encapsulation Error .....	59
Inactive DLCI.....	59
Invalid DLCI .....	59
Unrouteable .....	59
DLCI Statistics.....	60
DLCI Statistics for a Specific DLCI .....	60
Throughput (Tx and Rx) .....	60
Utilization.....	60
Remaining .....	61
Rx Frames.....	61
Rx Bytes .....	61
Maximum Rx Throughput.....	61
Average Rx Throughput .....	61
Maximum Rx Utilization .....	61
Average Rx Utilization.....	61
Tx Frames .....	61
Tx Bytes .....	61
Maximum Tx Throughput.....	61
Average Tx Throughput .....	62
Maximum Tx Utilization.....	62
Average Tx Utilization .....	62
PVC IA Time .....	62
Rx FECN .....	62
Tx FECN .....	62
Rx BECN.....	62
Tx BECN .....	62
Rx DE .....	62
Tx DE .....	63
Rx CR .....	63
Tx CR .....	63
Lost Packets.....	63
Remote Lost Packets.....	63
Rx Burst Seconds .....	63
Tx Burst Seconds .....	63
Minimum Rx Frame.....	63
Maximum Rx Frame .....	63

---

Average Rx Frame .....	63
Minimum Tx Frame .....	64
Maximum Tx Frame.....	64
Average Tx Frame .....	64
Minimum Frame Delay.....	64
Maximum Frame Delay .....	64
Average Frame Delay .....	64
PVC State Change.....	64
DLCI List .....	65
System Statistics .....	66
Viewing Statistical Information (Front Panel Interface) .....	67
DTE Port Statistics Available on Front Panel.....	67
Control Signal Status Screen .....	67
Signal State.....	68
Signal State Change.....	68
Signal Timeouts (TOS) .....	68
Signal Errors .....	68
Errored Frames .....	68
CRC Errors.....	68
Abort Frames.....	68
Octet Align.....	68
Signal Down Time .....	68
Network Port Statistics Available on Front Panel.....	69
Signal State.....	69
Signal State Change.....	69
Signal Timeouts (TOS) .....	69
Signal Errors .....	69
Frames In .....	69
Frames Out .....	69
Errored Frames .....	69
CRC Errors.....	69
Abort Frames.....	69
Octet Align.....	69
Port UA Time .....	69
Line Code.....	70
Path Code.....	70

**Chapter 10. Diagnostics**

Diagnostics .....	71
PVC Loopback .....	72
Enter DLCI or 0 for All (DLCI).....	73
Test Length.....	73
Begin Test .....	73
End Test .....	73
View Test Stats.....	73
PVC Active/Inactive/Undefined.....	73
Test Active/No Test Active.....	73
Frames Rx.....	73
Frames Tx.....	74
Dropped Packets .....	74
Remote Dropped Packets.....	74
Minimum Loop Response Time.....	74
Maximum Loop Response Time .....	74
Average Loop Response Time .....	74
Reset Test Stats .....	75
View DLCI List .....	75
Local Loopback.....	75

**Chapter 11. Utility Menu**

Software Revision.....	77
CMD Mode.....	77

**Appendix A. Pinouts..... 79**

**Appendix B. Specifications Summary**

Specifications and Features.....	83
Operating Modes .....	83
DTE Interfaces .....	83
Diagnostics.....	83
SNMP .....	84
Agency Approvals .....	84
Relevant Protocol Standards .....	84
Physical.....	84

**Index..... 85**

# List of Figures

---

Figure 2-1:	Installing the Option Module .....	8
Figure 2-2:	Attaching the Plug-On Board .....	9
Figure 2-3:	NxIQ Rear Panel .....	10
Figure 3-1:	Terminal Login Menu .....	14
Figure 3-2:	Terminal Main Menu .....	15
Figure 3-3:	NxIQ Front Panel Menu Structure .....	17
Figure 4-1:	VT 100 Management Application Example .....	20
Figure 4-2:	Out-of-Band Management Application Example .....	22
Figure 4-3:	Local PVC Management Application .....	24
Figure 4-4:	Shared PVC Management Application .....	26
Figure 4-5:	Dedicated PVC Management Application.....	28
Figure 5-1:	Terminal Configuration Menu.....	30
Figure 5-2:	Terminal Configuration Menu Tree.....	31
Figure 5-3:	Front Panel Interface Menu Tree .....	32
Figure 6-1:	Terminal DTE Port Configuration Menu .....	33
Figure 6-2:	DTE Port Menu Tree .....	34
Figure 7-1:	Terminal Network Port Configuration Menu .....	38
Figure 7-2:	Terminal Network Port Frame Relay Options Menu...	39
Figure 8-1:	System Configuration Menu .....	44
Figure 9-1:	View Statistics Menu .....	47
Figure 9-2:	DTE Port Statistics (View by Interval) .....	50
Figure 9-3:	DTE Port Statistics (View by Day) .....	51
Figure 9-4:	Network Port Statistics (View by Interval) .....	55
Figure 9-5:	Network Port Statistics (View by Day).....	56
Figure 9-6:	DLCI Statistics for a Specific DLCI (View by Interval)	60
Figure 9-7:	DLCI Statistics Summary for All Available DLCIs.....	65
Figure 9-8:	System Statistics Screen .....	66
Figure 9-9:	Control Signal Status Screen .....	67
Figure 9-10:	Signal State Screen .....	68
Figure 10-1:	Terminal Diagnostics Menu .....	71
Figure 10-2:	Front Panel Diagnostics Menu (with ESP Ethernet Card Installed) .....	72
Figure 10-3:	PVC Loopback Menu .....	72
Figure 10-4:	Test Status Screen .....	74
Figure 11-1:	System Statistics Screen .....	77
Figure 11-2:	Utility Menu Tree .....	78

## List of Figures

---

# List of Tables

---

Table A-A: Pin Assignments for Control Connector ..... 79  
Table A-B: V.35 Nx56/64 Interface Pinout, 26-Pin Subminiature D.. 80  
Table A-C: V.35 DBU Connector Pinout ..... 81



List of Tables

---

# Chapter 1

## Introduction

---

### PRODUCT OVERVIEW

The ADTRAN NxIQ option module installs in the option slot of the TSU multiplexer family of products and provides a synchronous V.35 interface for frame-relay applications.

The NxIQ provides the visibility and control needed for both the physical and logical connections made in frame-relay networks. The NxIQ provides logical layer monitoring and management for frame relay. Each permanent virtual circuit (PVC) accessed through an NxIQ is managed end-to-end as if it were a leased line connection. Real time statistics on throughput, bandwidth utilization, availability, bursting, congestion, and network delay are collected and stored in the Frame IQ MIB (management information base). This information can then be gathered by management systems and used to monitor network health and to perform long-term network planning.

The unit's embedded SNMP (simple network management protocol) agent provides complete SNMP access to the unit. SNMP access is available through the DTE or network port or through an integral SLIP (serial line internet protocol) or PPP (point-to-point protocol) async port. When used in the "e" series of TSU products, an Ethernet interface is available for SNMP access.

The following are features of the NxIQ:

- Complete and comprehensive frame relay monitoring
- Real-time measurement of bandwidth utilization, committed information rates (CIRs), and excess burst rates on each PVC
- True non-intrusive, inband transmission of statistics
- Embedded SNMP and TELNET through the DTE, Network, or SLIP/PPP port (or through the ethernet and SLIP ports on the “e” series TSU products)
- Control port provides SLIP and async PPP access to SNMP or VT 100 terminal configuration
- End-to-end network round trip delay measurements for network optimization
- Frame IQ MIB is standard ANSI (American National Standards Institute) format compatible with popular enterprise reporting systems
- Optional IQ View™ software system provides a cost-effective, easy-to-use GUI (graphical user interface) for performance management
- Standard DTE (data terminal equipment) interfaces

## Understanding Frame Relay

Frame relay is a wide area network (WAN) service designed to minimize physical connections. This is accomplished by using virtual connections within the frame relay cloud and accessing these virtual circuits with, normally, one physical connection at each location to the frame relay service. Virtual circuits are addressed using header information at the beginning of each frame. These frames are formatted by the user's customer premise equipment (CPE) such as the ADT-RAN NxIQ.

ANSI standards describe how each frame must be constructed to provide interoperability between CPE equipment and frame relay switching equipment. Each frame must contain a header, at least one byte of information data, two bytes of CRC16, and a trailing flag 0x7E.

This header information contains a virtual circuit address known as a DLCI (data link connection identifier). The header information also contains bits used for network congestion control.

Frame-relay virtual circuits may be defined as permanent (PVC) or switched (SVC). PVCs have the same DLCI for a given path each time a user protocol session is established. The network service provider assigns these DLCIs at subscription time. SVCs, on the other hand, have DLCIs dynamically assigned each time a user protocol session is established. The CPE equipment must request a call and the DLCI is assigned by the network-switching equipment. This DLCI is valid until the call is disconnected and may be assigned a different value each time a call is requested.

## SNMP Management

SNMP management capability is provided inband with support for RFC 1315 (frame relay DTE MIB), RFC 1213 (MIB II), RFC 1406 (DS1/E1 MIB), and ADTRAN Enterprise MIB. MIB files are available from ADTRAN in the support section of the ADTRAN Web page at [www.adtran.com](http://www.adtran.com). TELNET capability is also supported. For non-SNMP environments, VT 100 and front panel operation are supported.

The NxIQ's embedded SNMP feature allows the unit to be accessed and controlled by a network manager inband at the DTE or network interface, out-of-band at the control port via SLIP or async PPP, or using a LAN connection, available in the "e" series TSU products.

The term SNMP broadly refers to the message protocols used to exchange information between the network and the managed devices, as well as to the structure of network management databases. The three basic components of SNMP follow:

**Network Manager**

Control program that collects, controls, and presents data pertinent to the operation of the network devices. It resides on a network management station.

**Agent**

Control program that resides in each connected network device. This program responds to queries and commands from the network manager and returns requested information or invokes configuration changes initiated by the manager.

**MIB**

Index to the organized data within a network device. It defines the operation parameters that can be controlled or monitored.

**TELNET**

TELNET provides a password-protected, remote login facility to the NxIQ. TELNET allows a user on a network manager to control the NxIQ through the terminal menus.

## **Warranty and Customer Service**

ADTRAN will replace or repair this product within five years from the date of shipment if it does not meet its published specifications or fails while in service. For detailed warranty, repair, and return information refer to the ADTRAN Equipment Warranty and Repair and Return Policy Procedure.

Return Material Authorization (RMA) is required prior to returning equipment to ADTRAN.

For service, RMA requests, or further information, contact one of the numbers listed on the inside back cover of this manual.

## Chapter 1. Introduction

---

# Chapter 2

## Installation

---

### UNPACK, INSPECT, POWER UP

#### Receipt Inspection

Carefully inspect the option module for any shipping damage. If damage is suspected, file a claim immediately with the carrier and contact ADTRAN Customer and Product Service (CAPS). If possible, keep the original shipping container for use in shipping the NxIQ for repair or for verification of damage during shipment.

#### ADTRAN Shipments Include

The following items are included in ADTRAN shipments of the NxIQ:

- NxIQ option module
- The user manual
- V.35 DTE cable
- An 8-position modular to 8-position modular cable and a modular to female DB-25 adapter for access to the Control/SLIP/PPP port



*The ADTRAN NxIQ MIB is available from ADTRAN in the support section of the ADTRAN Web page at [www.adtran.com](http://www.adtran.com).*



---

**Customer Provides**

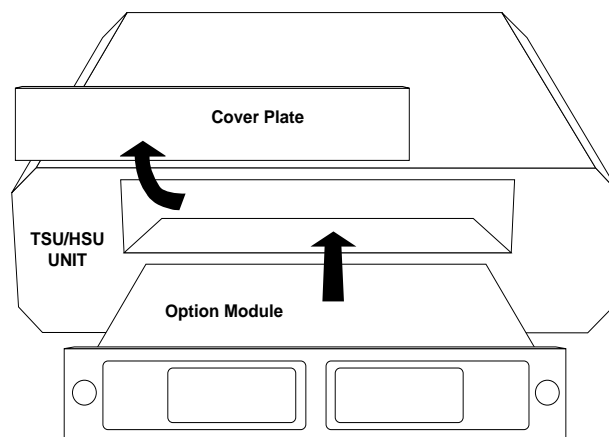
For SNMP management not accessed through the DTE or network port, the customer must provide access to the NxIQ either through a SLIP port, Async PPP port (requires a male 25-pin D-type connector), or a 10baseT Ethernet port (requires an “e” series TSU product). See *Appendix A: Pinouts* for the pin assignments of the control port (for SLIP and Async PPP).

**INSTALLATION**

**Placement of the Option Module**

*Figure 2-1* shows the proper placement of the option module. Perform the following steps to install the option module.

1. Remove the cover plate from the TSU/TDU unit rear panel.
2. Slide the option module into the rear panel of the TSU/TDU unit until it is positioned firmly against the front of the unit.
3. Fasten the thumbscrews at both edges of the option module.



**Figure 2-1**  
*Installing the Option Module*

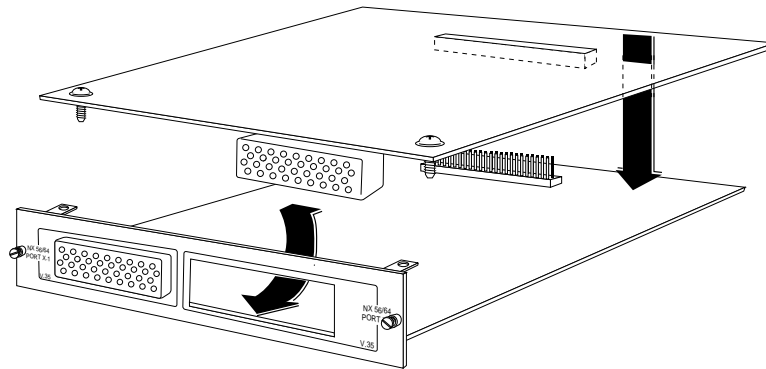
## Power Connection

Each option module derives power from the base TSU/TDU unit. Power to the TSU/TDU is supplied by a captive eight-foot power cord.

## Attaching the Plug-On Board

*Figure 2-2* shows the proper attachment of a plug-on board to the option module. Perform the following steps to install the plug-on board:

1. Hold the plug-on board above the option module.
2. Using a downward and right-to-left motion, slip the V.35 Connector plug into the opening in the option module back panel.
3. Moving the plug-on board downward, secure the connection of the header pins at the front of the boards.
4. Install the two 4-40 screws at both edges of the option module.



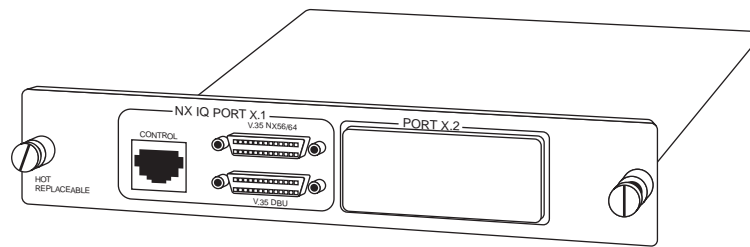
**Figure 2-2**  
*Attaching the Plug-On Board*

### **WARNING**

*The connection of the header pins between the option module and the plug-on board must be visually verified. Severe damage to the equipment can result from an improper connection.*

### Rear Panel

The rear panel contains a DTE connector which provides the primary channel V.35. A second V.35 port is provided for Dial Backup applications. A control port is also provided for terminal or SLIP/PPP access. Pin assignments for these connectors are listed in *Appendix A: Pinouts*. The NxIQ rear panel is shown in *Figure 2-3*.



**Figure 2-3**  
*NxIQ Rear Panel*

### Control Port

The NxIQ has an 8-pin modular jack labeled CONTROL. The control port provides connection to a VT 100 EIA-232 compatible interface, a device running SLIP protocol, or a device running Async PPP protocol. An 8-foot cable with adapter connector provides a standard DB-25 EIA-232 interface. See *Appendix A: Pinouts* for the control port's pin assignments. A description of the operation of this port is covered in *Chapter 3: Operation*.

### V.35 Connector: DTE Data Connection

The DTE should be connected to the V.35 connector (labeled V.35 Nx56/64). The pin assignments for this connector are listed in *Appendix A: Pinouts*.



**CAUTION** *To prevent possible radio frequency interference emissions, a shielded cable is required.*

### V.35 Connector: Dial Backup (DBU) Connector

The dial backup device should be connected to this V.35 interface. The pin assignments for this connector are listed in *Appendix A: Pinouts*.



# Chapter 3

## Operation

---

### FRONT PANEL

Refer to the *TSU Product Manual* for a description of front panel operation.

### Vt 100 Terminal Connection And Operation

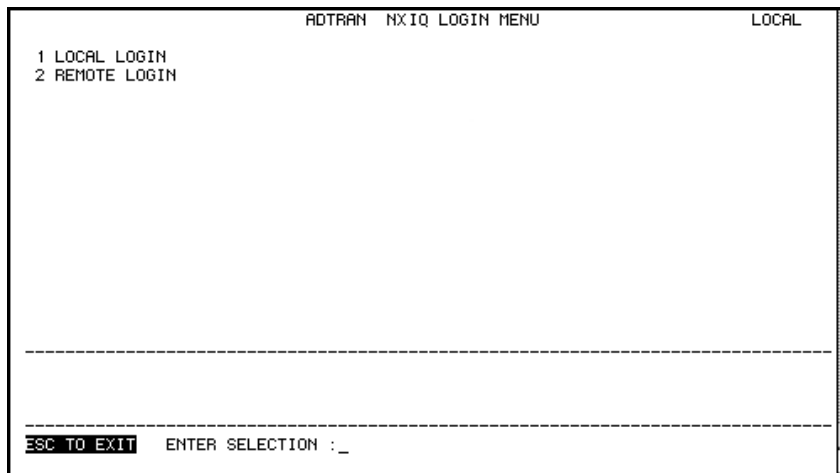
To control the NxIQ using a VT 100 terminal, follow this procedure:

1. Set the NxIQ baud rate to match the terminal through the front panel (maximum rate is 38.4K).
2. Using the ADTRAN-provided VT 100 terminal adapter, connect the COM port of a VT 100 compatible terminal or equivalent to the 8-pin modular jack labeled **CONTROL** on the rear of the NxIQ. This connection is used for both local and remote configuration. (In the “e” series TSU products, the terminal can be connected to the **Control In** port of the chassis.)
3. Open the connection and press **Enter** repeatedly until the Login Menu appears (See *Figure 3-1* on page 14).
4. Select Local Login to configure the NxIQ unit connected to the terminal. Select **Remote Login** to configure a remotely located NxIQ unit. For remote applications, at the remote DLCI prompt, enter the outgoing DLCI (see the following note) by pressing **1**, then **Enter**, entering the DLCI number,

and pressing **Enter** again. Next select **Begin Remote Session** by pressing **2** and **Enter**.

**NOTE** *When entering the DLCI for a remote application, enter the DLCI associated with the local unit that you are logged in to (not the far end DLCI).*

**NOTE** *If the wrong DLCI is entered or a network problem exists, the screen freezes at the **Press any key to continue** prompt. Press **CNTL + L** twice to return the unit to the Login screen.*

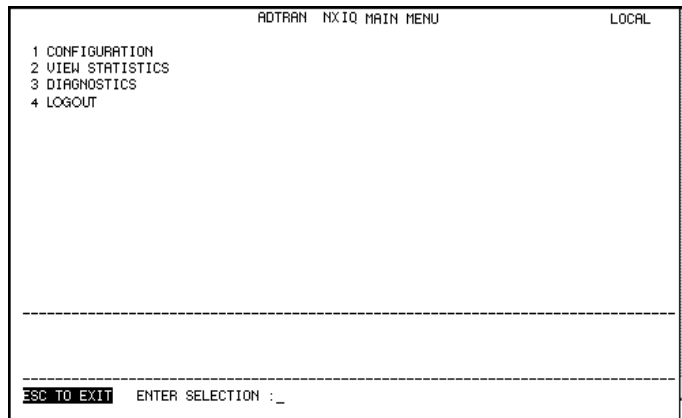


**Figure 3-1**  
*Terminal Login Menu*

5. Enter the password. The factory default password is **adtran**. The Main menu will appear (See *Figure 3-2*).
6. Make selections by entering the number corresponding to the chosen parameter. Press **ESC** to return to the previous screen.



**NOTE** *In the upper right-hand corner of the VT 100 screen, LOCAL or REMOTE is displayed, indicating the unit the current screen represents. See Figure 3-2.*



**Figure 3-2**  
*Terminal Main Menu*

## NXIQ MENU STRUCTURE

The opening menu is the access point to all other operations. The Main menu branches are Configuration, View Statistics, Diagnostics, and Logout as shown in *Figure 3-2*. Each Main menu item has several functions and submenus to identify and access specific parameters.



**NOTE** *The Logout selection is available on the terminal interface only.*





*In this chapter, the terminal selections are listed first, followed by the Front Panel selections (if the names differ). See Figure 3-3 on page 17.*

## Main Menu

Definitions for the branches of the Main menu follow:

### **Configuration (CONFIG)**

Configuration is used to select network, DTE, and system operating parameters. For more information on configuration options, see the following chapters: *Chapter 5: Configuration Overview*, *Chapter 6: DTE Port Configuration*, *Chapter 7: Configuring the Network Port*, and *Chapter 8: System Configuration*.

### **View Statistics (STATUS)**

This selection displays statistical information for the DTE port, the network port, and the system. See *Chapter 9: Statistics* for more information.

### **Diagnostics (TEST)**

Diagnostic options allow you to perform PVC loopback tests. See *Chapter 10: Diagnostics* for more information.

### **Logout (terminal menu only)**

This parameter logs out of the system.

STATUS	1) DTE
	2) NET
	3) RESET STATS
CONFIG	1) DTE PORT
	2) NETWORK PORT
	3) CONTROL PORT
	4) SYSTEM
UTIL	1) SW REVISION
	2) CMD MODE
TEST	1) PVC LOOPBACK
	2) LOCAL LOOPBACK

**Figure 3-3**  
*NxIQ Front Panel Menu Structure*



# Chapter 4

## Management Applications

---

One of the main advantages of the NxIQ is management flexibility. The TSU front panel interface provides configuration capabilities and viewing of key frame relay statistics information. Other management options described in this chapter provide configuration and diagnostics capabilities as well as all-inclusive statistics information.

This chapter provides examples of some common NxIQ management options. The examples include VT 100 management, out-of-band SNMP/TELNET management, and inband PVC SNMP/TELNET management. Descriptions and configuration tips for these management options are provided in the sections that follow.



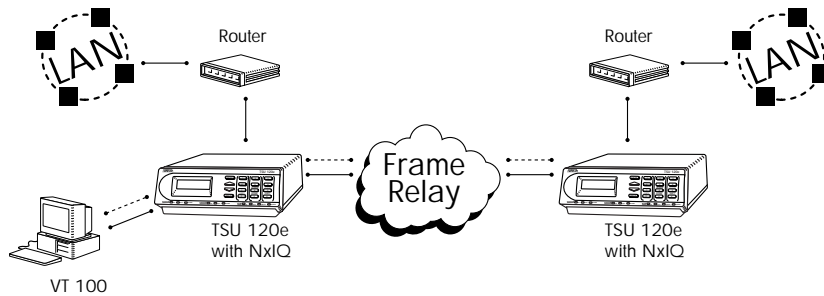
*The application drawings in this chapter show routers as the frame relay device. The frame relay device could be any device with frame relay capabilities. However, to use inband management, the management DLCI must be RFC 1490 encapsulated IP traffic.*

## LOCAL VT 100 TERMINAL MANAGEMENT

Connect a VT 100 terminal to the NxIQ CONTROL port (or to the control port on the chassis of an “e” series TSU product). This interface provides full-screen configuration and all-inclusive statistics access. VT 100 management also allows for remote configuration. Through this port, a remotely located NxIQ is fully accessible for configuration, diagnostics, and statistics viewing. *Figure 4-1* shows an example of VT 100 application.



*VT 100 remote mode is proprietary and non-intrusive. Therefore, you can perform all VT 100 management functions without disrupting the flow of data.*



**Figure 4-1**  
*VT 100 Management Application Example*

---

## Minimum Configuration Requirements for VT 100 Management

The following options are the minimum configuration requirements for establishing VT 100 management access.

### Baud Rate

Set the baud rate to match the VT 100 terminal rate. This is accessible from the front panel only (select CONTROL PORT from the CONFIG menu).

### Control Port Mode

Set the Control Port Mode for TERMINAL. This selection is found in the SYSTEM CONFIGURATION portion of the CONFIG menu.

## OUT-OF-BAND MANAGEMENT

This management option (shown in *Figure 4-2* on page 22) is commonly used in situations where the customer is trying to reduce the amount of management traffic flowing through the frame relay device. The NxIQ can be managed through an established TELNET session or an SNMP-based network manager like HP OpenView®, IBM Netview®, or SunNet Manager®.

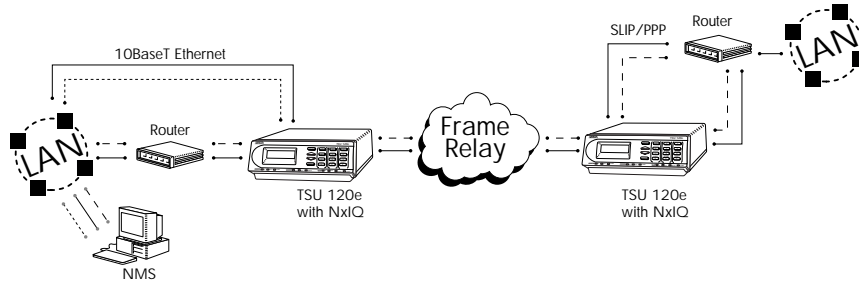


*The ADTRAN NxIQ MIB is available in the support section of the ADTRAN Web page at [www.adtran.com](http://www.adtran.com).*

SNMP and TELNET management is provided by one of the following interfaces:

- A device (e.g., a router) running SLIP protocol. Connection is made through the NxIQ's control port (or the chassis control port on an "e" series TSU product).
- A device (e.g., a router) running async PPP protocol (or the chassis control port on an "e" series TSU product).

- A LAN. Connection is made through the Ethernet interface on the chassis of an “e” series TSU product.



**Figure 4-2**  
*Out-of-Band Management Application Example*

### Minimum Configuration Requirements for Out-of-Band Management

The following options (all found in the SYSTEM CONFIGURATION menu) are the minimum configuration requirements for establishing out-of-band SNMP or TELNET access. Once these options are configured, the unit may be accessed using SNMP/TELNET.

#### Control Port Mode

If necessary, select SLIP or PPP as the NxIQ control port mode. If the control or Ethernet interfaces on the “e” series TSU are used, refer to the *TSU User Manual* for set-up.

#### IP Address

Enter the NxIQ IP address.

The next five settings are applicable for SNMP access only:

#### Read Community Name

Set the Read Community Name to match the NMS (network management system) settings.

**Write Community Name**

Set the Write Community Name to match the NMS settings.

**Trap Manger DLCI**

Identify the virtual circuit used for all traps generated by the NxIQ.

**Trap Manager IP**

Enter the IP address of the SNMP manager to which the NxIQ sends traps.

**Trap Manger Port**

Enter the NxIQ port used to transmit traps to the SNMP manager.

## INBAND MANAGEMENT

The ADTRAN NxIQ supports three modes of inband management using the frame relay structure of PVCs. These modes are *local* (see *Figure 4-3* on page 24), *shared* (see *Figure 4-4* on page 26), and *dedicated PVC management* (see *Figure 4-5* on page 28). All three types support complete SNMP management as well as TELNET capabilities.



*All PVC-based inband management traffic must be noncompressed IP and use RFC 1490 encapsulation.*

## Local PVC Management

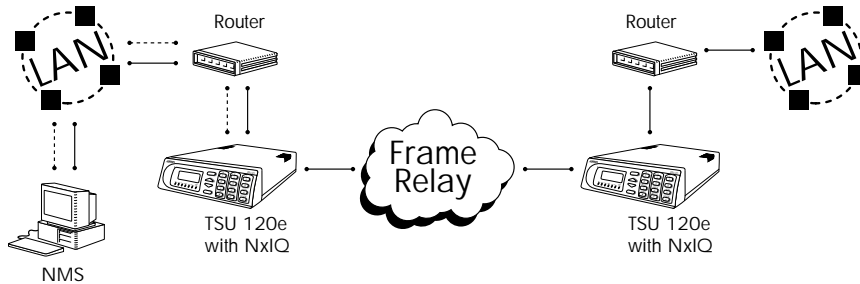
Local PVC management refers to a PVC created between the NxIQ and the frame relay router on the DTE interface of the NxIQ. This type of management is ideal when local management is needed but an Ethernet connection is not available. To support this type of management, all traffic on the selected PVC must be RFC 1490 encapsulated, noncompressed IP traffic.

The local PVC is sent out of the WAN serial port of the router as normal WAN traffic and is terminated in the NxIQ. Since the NxIQ responds to Inverse ARP, it is



not necessary to set up a static route in the router. The router will discover the IP address automatically; however, it will be necessary to set up a local PVC between the router and the NxIQ. Accomplish this by setting a value (between 16 and 1007) for the DTE management DLCI on the NxIQ to a value not used by the frame relay network.

Local PVC management can be used at any location that has a router. Therefore, remote sites can be accessed through the remote router. One consideration when using local PVC management is that if the remote router goes down, then access to the remote TSU is lost.



**Figure 4-3**  
*Local PVC Management Application*

#### Minimum Configuration Requirements for Local PVC Management

The following options are the minimum configuration requirements for establishing inband local PVC management. Once these options are configured, the unit may be accessed using SNMP/TELNET. All options (with the exception of the Management DLCI option) are found in the SYSTEM CONFIGURATION menu.

##### **IP Address**

Enter the NxIQ IP address.

**Management DLCI**

Enter a DLCI number (between 16 and 1007) that is not used by the frame relay service. This option is found in the DTE Port Configuration menu.

The next five settings are applicable for SNMP access only:

**Read Community Name**

Set the Read Community Name to match the NMS settings.

**Write Community Name**

Set the Write Community Name to match the NMS settings.

**Trap Manger DLCI**

Identify the virtual circuit used for all traps generated by the NxIQ.

**Trap Manager IP**

Enter the IP address of the SNMP manager to which the NxIQ sends traps.

**Trap Manger Port**

Enter the NxIQ port used to transmit traps to the SNMP manager.

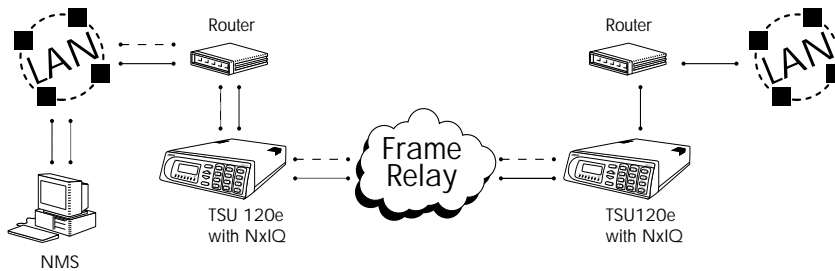
## Shared PVC Management

Shared PVC management refers to a PVC that is used for normal data traffic between locations. The NxIQ monitors this PVC for packets that contain its IP address. When the NxIQ detects a packet containing a destination IP address that matches the NxIQ IP address, the unit intercepts the packet and processes its TCP/IP information. To support this type of management, all traffic on the selected PVC must be RFC 1490 encapsulated, noncompressed IP traffic.

Shared PVC management is used to manage remote NxIQs without being dependent on services from the remote router. This usually requires a static route at the host location.



*By setting a local PVC management and a shared PVC management on the remote NxIQ, its IP address can be found through Inverse ARP. Since the unit is set up for shared PVC management, all management traffic will be intercepted prior to reaching the remote router.*



**Figure 4-4**  
*Shared PVC Management Application*

#### Minimum Configuration Requirements for Shared PVC Management

The following options are the minimum configuration requirements for establishing inband shared PVC management. Once these options are configured, the unit may be accessed using SNMP/TELNET. All options (with the exception of the Management DLCI options) are found in the SYSTEM CONFIGURATION menu.

##### **IP Address**

Enter the NxIQ IP address.

##### **Management DLCI 1 and/or DLCI 2**

Enter the management DLCI(s) used to carry management traffic to and from the network. This option is found in the Network Port Configuration menu.

**Management DLCI 1 and/or DLCI 2 Mode**

Set to DEDICATED if the management DLCI is used only to manage the NxIQ (and not used to carry customer traffic). If set to DEDICATED, the router is not notified of that DLCI. Set to SHARED if the DLCI is used to carry customer traffic as well as management data. This option is found in the Network Port Configuration menu.



*The NxIQ unit supports management from two network DLCIs either shared or dedicated.*

The next five settings are applicable for SNMP access only:

**Read Community Name**

Set the Read Community Name to match the NMS settings.

**Write Community Name**

Set the Write Community Name to match the NMS settings.

**Trap Manger DLCI**

Identify the virtual circuit used for all traps generated by the NxIQ.

**Trap Manager IP**

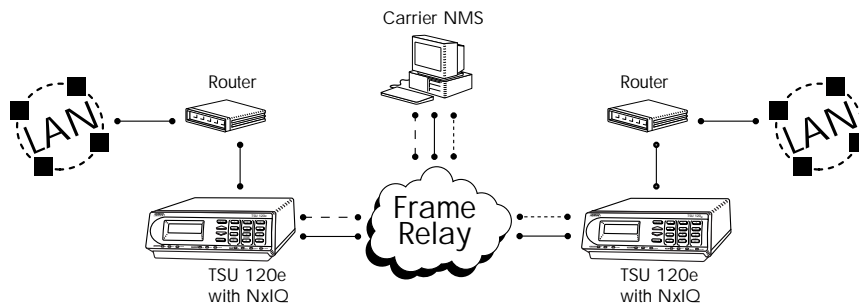
Enter the IP address of the SNMP manager to which the NxIQ sends traps.

**Trap Manger Port**

Enter the NxIQ port used to transmit traps to the SNMP manager.

## Dedicated PVC Management

Dedicated PVC management refers to the ability to have a PVC originated from the network and terminated in the NxIQ. This is an ideal configuration for third-party management. It isolates the customer's data traffic from network management traffic, and it also acts as a firewall that restricts management data to the TSU. Dedicated PVC management is also ideal when the user wants to guarantee access to a remote TSU regardless of the state of the remote LAN.



**Figure 4-5**  
*Dedicated PVC Management Application*

### Minimum Configuration Requirements for Dedicated PVC Management

The configuration requirements for dedicated PVC management are identical to those listed for shared PVC management. See the previous section, *Minimum Configuration Requirements for Shared PVC Management*, on page 26 for more information.

# Chapter 5

## Configuration Overview

---

### LOCAL AND REMOTE CONFIGURATION

The NxIQ can be configured locally or communications can be established so that a local NxIQ can configure a remote NxIQ using a VT 100 interface. See *Chapter 3: Operation* for information on selecting **Local** or **Remote** operation.

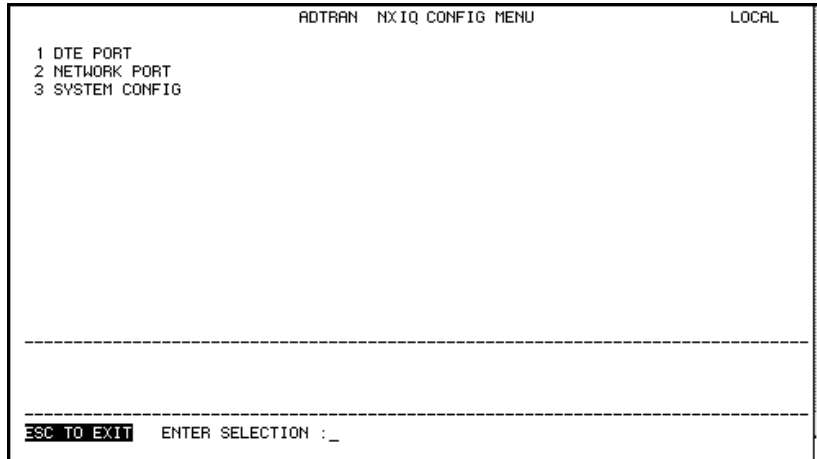
The Configuration menu consists of the following sub-menus relating to specific interfaces or functions of the NxIQ requiring setup:

- DTE Port
- Network Port
- Control Port (front panel only)
- System Configuration

The terminal configuration menu is shown in *Figure 5-1* on page 30.

To access module configuration:

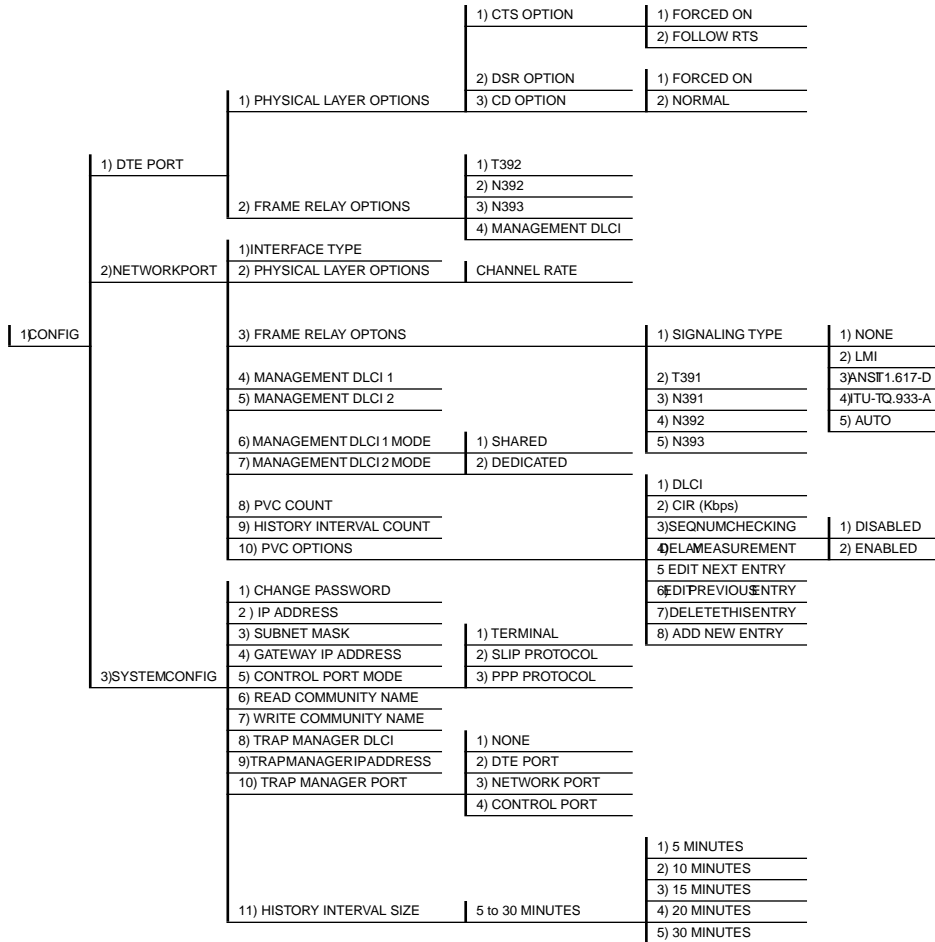
**Press 2** (Config Menu tree, and  
**Enter 7** (Port Config)



**Figure 5-1**  
*Terminal Configuration Menu*

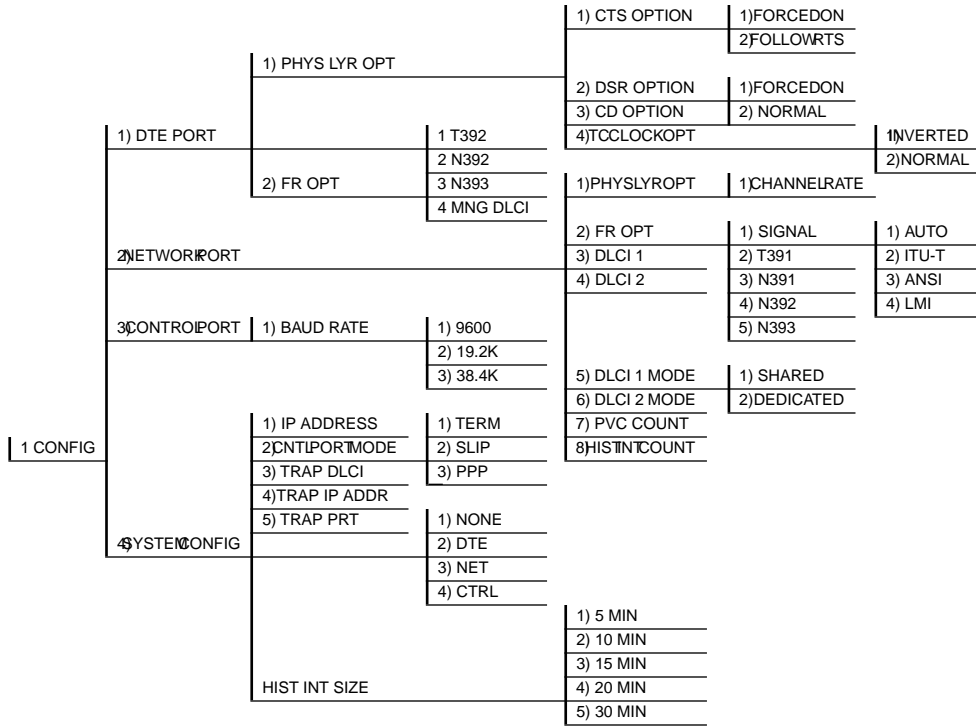
For detailed information on configuration, see *Chapter 6: DTE Port Configuration*, *Chapter 7: Configuring the Network Port*, and *Chapter 8: System Configuration*.

Configuration menu trees are shown in *Figure 5-2* on page 31 (for the terminal) and *Figure 5-3* on page 32 (for the front panel interface).



**Figure 5-2**  
*Terminal Configuration Menu Tree*





**Figure 5-3**  
*Front Panel Interface Menu Tree*

# Chapter 6

## DTE Port Configuration

---

Configure the physical layer and frame relay protocol options for the DTE port located on the rear of the NxIQ by selecting DTE PORT from the Configuration menu. *Figure 6-1* illustrates the terminal Configuration menu for the DTE Port. The menu tree in *Figure 6-2* on page 34 shows the choices available in this menu.

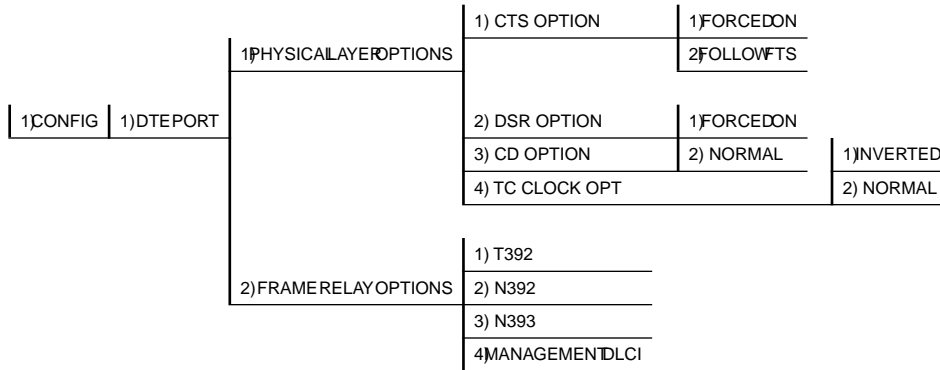
```
DTE PORT                ADTRAN  NXIQ PORT CONFIG MENU                LOCAL
1 PHYSICAL LAYER OPTIONS
2 FRAME RELAY OPTIONS

-----

ESC TO EXIT  ENTER SELECTION :_
```

**Figure 6-1**  
*Terminal DTE Port Configuration Menu*

In this chapter, the terminal selections are listed first followed by the Front Panel selections in parenthesis (if the names differ).



**Figure 6-2**  
*DTE Port Menu Tree*

## Physical Layer Options (PHYS L YR OPT)

### CTS Option

Set the CTS lead to FORCED ON or FOLLOW RTS.

#### Forced On

The CTS lead is always on and the RTS lead is ignored.

#### Follow RTS

The CTS lead is on when the RTS lead is on (and off when the RTS lead is off).

### DSR Option

Set the DSR lead to Forced On or Normal.

#### Forced On

The DSR lead is always on.

#### Normal

The DSR lead is off when the NxIQ is in a DSU loopback test or an alarm state.

### CD Option

Set the CD lead to **Forced On** or **Normal**.

#### **Forced On**

The CD lead is always on.

#### **Normal**

The CD lead is off when the NxIQ is in alarm state.

### TC Clock Option

Set the transmit clock to **Normal** or **Inverted**.

## Frame Relay Options (FR OPT)

The frame relay protocol is a synchronous protocol used to concentrate two different devices into a common frame relay link to the network. The NxIQ accepts frame relay frames from a router or a FRAD (frame relay access device) and routes to/from the network port based on the DLCI address.

### T392

Set the timeout (in seconds) between polling intervals. This parameter needs to be a few seconds longer than the T391 setting of the attached frame relay device.

### N392 and N393

N392 defines the number of errors required in a given event window, while N393 defines the number of polling events in each window.

These parameters define the error threshold for the UNI (user to network interface) formed by the NxIQ DTE port and the attached frame relay device. If the error threshold is met, the signaling state status is changed to down, which indicates a service-affecting condition. This condition is cleared once N393 consecutive error-free events are received.

For example:

If N392=3 and N393=4, then if three errors occur within any four events the interface is determined inactive.

The status of the connection can be viewed in the Status menu under DTE Port Signaling State. The status returns to active once the threshold is no longer exceeded.

### **Management DLCI (MNG DLCI)**

To use local PVC management, enter the management data link connection identifier. The management DLCI is a special DLCI used between the attached DTE device and the NxIQ to carry SNMP and TELNET packets to/from the NxIQ on the DTE port.

#### **Guidelines for Configuring Management DLCI**

If the attached router or FRAD is used to route SNMP/TELNET frames to the NxIQ, set the Management DLCI to a unique value (between 16 and 1007) that identifies the virtual circuit between the router/FRAD and the NxIQ. The router/FRAD must also be configured to route the NxIQ IP address to this DLCI. The IP address and subnet mask for the DTE port must also be set in the System Configuration menu.

# Chapter 7

## Configuring the Network Port

---

### NETWORK PORT

Access the network port menus by selecting **Network Port** from the Configuration menu. Full menu trees for the Network Configuration selections are shown in *Figure 5-2, Terminal Configuration Menu Tree*, on page 31 and *Figure 5-3, Front Panel Configuration Menu Tree*, on page 32 in this manual.

The network port terminates the user end of the frame-relay UNI interface. The NxIQ supports three standard PVC signaling formats: LMI (gang of four), ANSI T1.617-D (Annex D), and ITU Q.933-A (Annex A). The selected signaling format is used to poll the network end of the UNI interface and retrieve virtual circuit information. Optionally the polling process can be disabled.

When configuring from a terminal, the screen in *Figure 7-1* on page 38 appears when **Network Port** is selected.



*In this chapter, the terminal selections are listed first, followed by the Front Panel selections in parenthesis (if the names differ).*

```
ADTRAN NxlQ NETWORK PORT CONFIG MENU LOCAL
1 PHYSICAL LAYER OPTIONS
2 FRAME RELAY OPTIONS
3 MANAGEMENT DLCI 1=1006
4 MANAGEMENT DLCI 2=1005
5 MGMT DLCI 1 MODE=SHARED
6 MGMT DLCI 2 MODE=SHARED
7 PVC COUNT=20
8 HISTORY INTERVAL COUNT=220
9 PVC OPTIONS

-----

ESC TO EXIT ENTER SELECTION : _
```

**Figure 7-1**  
*Terminal Network Port Configuration Menu*

### **Physical Layer Option (PHYS LYR OPT)**

The following section describes the physical layer option available for the Network Port:

#### **Channel Bandwidth (CHANNEL RATE)**

Set the channel bandwidth for 56 or 64 Kbps.

## Frame Relay Options (FR OPT)

The terminal screen in *Figure 7-2* appears when Frame Relay Options is selected from the Network Port Configuration Menu.

```

ADTRAN  NXIQ NETWORK PORT FRAME RELAY OPTIONS          LOCAL
1 SIGNALING TYPE=ANSI T1.617-D
2 T391=10
3 N391=6
4 N392=3
5 N393=4

-----
ESC TO EXIT  ENTER SELECTION : _

```

**Figure 7-2**  
*Terminal Network Port Frame Relay Options Menu*

### Signaling Type (SIGNAL)

Set the signaling type option to match the network signaling type. Choices are none, LMI (gang of four), ANSI T1.617-D (Annex D), ITU-T Q.933-A (Annex A), or Auto. Auto mode forces the NxIQ to use the same signaling type as the attached frame relay DTE. If AUTO is selected and there is no DTE device attached, the NxIQ uses ANSI T1.617-D signaling type.

### T391

Set the time (in seconds) between polls to the frame relay network.

### N391

Determine how many link integrity polls occur in between full status polls.



### N392 and N393

N392 defines the number of errors required in a given event window, while N393 defines the number of polling events in each window.

These parameters define the error threshold for the UNI formed by the NxIQ network port and the frame-relay switch. If the error threshold is met, the signaling state status is changed to down, which indicates a service-affecting condition. This condition is cleared once N393 consecutive error-free events are received.

#### **For example:**

If N392=3 and N393= 4, then if three errors occur within any four events the interface is determined inactive.

The status of the connection can be viewed in the Statistics menu under Network Port Signaling State. The status returns to active, once the threshold is no longer exceeded.



**NOTE** *The network service provider should recommend the values entered into the T391, N391, N392, and N393 fields.*

### Management DLCI 1 and 2 (DLCI 1 and 2)

Enter the management data link connection identifiers (DLCIs). These DLCIs are used to carry management traffic to and from the network.

### Management DLCI 1 and 2 Mode (DLCI 1 and 2 MODE)

Set to **Dedicated** if the management DLCI is used only to manage the NxIQ (and not used to carry customer traffic). If set to **Dedicated**, the router is not notified of that DLCI. Set to **Shared** if the management DLCI is used for carrying customer traffic and management data.

### **PVC Count**

Sets the maximum number of PVCs that the NxIQ will monitor for statistical information. This value determines the amount of history intervals available for storage. To get the maximum amount of statistical history storage, set this value equal to the number of PVCs assigned to the frame-relay port. A smaller value increases history interval count but puts some of the PVC statistics into the unknown category.

### **History Interval Count (HIST INT COUNT)**

Sets the number of history intervals to store for statistics. History intervals are displayed in the View Option Menu by Interval portions of the Statistics menus. These views provide data which is divided into columns and grouped by the interval of time selected in the History Interval Size field (see the chapter System Configuration for more information). The History Interval Count field determines how many intervals can be stored at a time. The maximum value allowed is affected by the previously mentioned PVC Count selection.

### **PVC Options (not available through front panel)**

The information in this menu must be entered for each PVC. DLCI numbers and their corresponding CIRs are provided by the service provider.

#### **DLCI**

Enter the Network DLCI.

#### **CIR (Kbps)**

Enter the CIR (committed information rate) in Kbps for the corresponding DLCI. The information is provided by your service provider and must be entered for each PVC.

### **Sequence Number Checking**

Set to ENABLE only if there are NxIQs on both ends of the PVC. When enabled, the NxIQ tags each frame with a sequence number which is then used by the remote NxIQ to detect lost packets. Lost packet counts are given in the Statistics menus.

### **Delay Measurement**

Set to ENABLE only if there are NxIQs on both ends of the PVC. When enabled, the NxIQ periodically transmits a loopback frame to the remote NxIQ which is then returned to measure round trip delay of each PVC. Minimum, maximum, and average delay measurements are given in the Statistics menus.

### **Edit Next Entry**

Edit the next entry in the PVC Options table.

### **Edit Previous Entry**

Edit the previous entry in the PVC Options table.

### **Delete This Entry**

Delete the current entry in the PVC Options table.

### **Add New Entry**

Add a new entry to the PVC Options table.

# Chapter 8

## System Configuration

---

### SYSTEM CONFIG

Access System Configuration selections by first choosing CONFIGURATION from the Main menu. Then choose SYSTEM CONFIG from the Configuration Menu.

Full menu trees for the System Configuration selections are shown in *Figure 5-2, Terminal Configuration Menu Tree*, on page 31 and *Figure 5-3, Front Panel Configuration Menu Tree*, on page 32. *The Terminal System Configuration Menu* is shown in *Figure 8-1* on page 44.

### Change Password (not available on front panel)

Enter a new password of nine characters or less. The default password is **adtran**.

### IP Address

Enter the NxIQ IP (internet protocol) address.

```
ADTRAN NXIQ SYSTEM CONFIG MENU LOCAL
1 CHANGE PASSWORD
2 IP ADDRESS=0.0.0.0
3 SUBNET MASK=0.0.0.0
4 GATEWAY IP ADDRESS=0.0.0.0
5 CONTROL PORT MODE=TERMINAL
6 READ COMMUNITY NAME=public
7 WRITE COMMUNITY NAME=private
8 TRAP MANAGER DLCI=0
9 TRAP MANAGER IP ADDRESS=0.0.0.0
10 TRAP MANAGER PORT=NONE
11 SET HOUR=8
12 SET MINUTE=5
13 SET DAY=13
14 SET MONTH=1
15 SET YEAR=0
16 HISTORY INTERVAL SIZE=5 MINUTES
-----
ESC TO EXIT ENTER SELECTION :_
```

**Figure 8-1**  
*System Configuration Menu*

### **Control Port Mode (CNTL PORT MODE)**

Set the Control port for terminal, SLIP protocol, or PPP protocol mode. Set for SLIP or PPP when using the Control port for an SNMP/TELNET path.

### **Read Community Name** *(not available through front panel)*

Enter the authentication strings used for SNMP management. Match the NxIQ to the SNMP manager for read privileges.

### **Write Community Name**

*(not available through front panel)*

Enter the authentication strings used for SNMP management. Match the NxiQ to the SNMP manager for write privileges.

### **Trap Manager DLCI (TRAP DLCI)**

If the trap manager port is set for Network or DTE, this parameter identifies the virtual circuit used for all traps generated by the NxiQ.

### **Trap Manager IP Address (TRAP IP ADDR)**

Enter the IP address of the SNMP manager to which the NxiQ sends traps.

### **Trap Manager Port (TRAP PRT)**

Enter the NxiQ port used to transmit traps to the SNMP manager. Choices are none, DTE port, network port, and control port.

### **History Interval Size (HIS INT SIZE)**

The time entered in this field affects the Interval View in the Statistics menus. The Interval View provides historical data for the current day. The data is divided into columns grouped by the interval of time (5, 10, 15, 20, 25, or 30 minutes) selected in this field. The NxiQ stores up to 157 intervals. Once the maximum is reached, new information overwrites existing information, beginning with the least current.



*If data is not retrieved before the Total Time Stored is exceeded, it is overwritten and cannot be restored. Total Time Stored = History Interval Size x History Interval Count.*



# Chapter 9

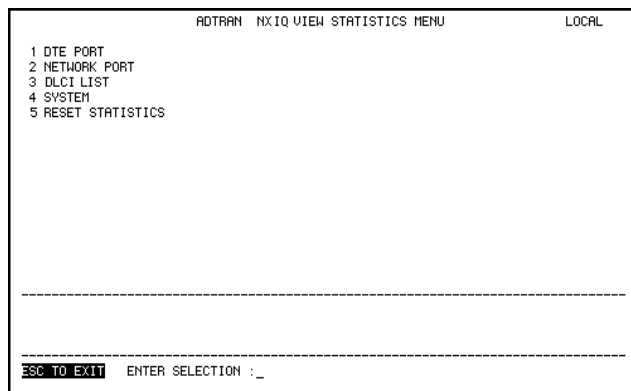
## Statistics

---

For descriptions of the terminal statistics menus see the following section, *Viewing Statistical Information (Terminal Interface)*. For front panel menu descriptions, see the section *Viewing Statistical Information (Front Panel Interface)* on page 67.

### VIEWING STATISTICAL INFORMATION (TERMINAL INTERFACE)

Select View Statistics from the Main menu to access the View Statistics Menu shown in *Figure 9-1*. From this menu, select **DTE Port** or **Network Port** to view statistics for the ports, **DLCI List** to view all available DLCIs, or **System** to view the system. Select **Reset Statistics** to clear all current information.



**Figure 9-1**  
*View Statistics Menu*



## Terminal Statistics Display Options

DTE port, network port, and DLCI statistics are given in two formats: View by Interval and View by Day.

### View by Interval

In this view, the first column is a running total for the current day. All other columns are grouped into user-configured time frames with the most recent information displayed on the left. The first column's header displays the current date, and the interval columns display the time the intervals began. In order to categorize the interval columns by date also, the midnight time stamp is replaced with the date. Note that this column still represents the timed interval (not a day's worth of information).

To configure the interval time frame, go to the System Configuration menu under History Interval Size and select the time you want the history interval to be set for (from 5 to 30 minutes, in five minute intervals). The NxIQ gathers and displays the information according to the time selected.



#### NOTE

*The NxIQ cuts short the first gathering session in order to begin falling on the selected time boundary. For example: If the unit or the statistics information was last reset at 12:03 and the History Interval is set for five minutes, then the first interval session will only last two minutes. Therefore, the first interval column (i.e., the column farthest to the right if no columns have been deleted yet) normally represents a time shorter than the other columns.*

### View by Day

This view provides historical information for the last seven days (not including the current day). The most recent information is displayed on the left.



#### NOTE

*The first day's column (i.e., the column farthest to the right) does not represent a full day's worth of information (unless the unit or the statistics information was reset at exactly 12 AM).*

---

## Hot Keys

Once you have entered one of the statistics menus, hot keys are displayed across the bottom of the screen, allowing you to quickly access other menus or navigate within the current menu. These keys vary depending on the menu currently displayed.

**ESC=Menu**

Press the ESC key to return to the main View Statistics menu (shown in *Figure 9-1* on page 47).

**D=DLCI**

When viewing Network port statistics, press **D** to view the DLCI Statistics menu, shown in *Figure 9-6* on page 60.

**Page (+, -)**

Press the + and - keys to scroll through statistics menu pages.

**NOTE**

*The **Shift** key must be used with the + key to advance a menu page.*

**Scroll (<, >)**

Press the < and > keys to scroll left and right on a statistics menu page.

**NOTE**

*The **Shift** key must be used with the < and > keys to scroll a menu page.*

**V=View by Day/View by Interval**

Press V to change the view format.

The following sections describe the information given on the DTE port, Network port, DLCI, and System Statistics menus.

## DTE Port Statistics

Information given is for the DTE port since the last re-set. See *Figure 9-2*, below, and *Figure 9-3* on page 51 for the two DTE Port Statistics screen formats.

### Leads On

If a lead has become active on the selected port since the last screen reset, it is listed in the View Statistics menu as shown in *Figure 9-2*, below. The following is a list of DTE control leads that appear in the **Leads On** field.

RTS	Request to send
DTR	Data terminal ready
CTS	Clear to send
DSR	Data set ready
DCD	Data carrier detect

DTE PORT	ADTRAN	NXIQ VIEW STATISTICS					LOCAL
Leads On -->	CTS	DSR	DCD	Interval Remaining			170
Signaling State -->	DOWN						
	DEC	3	22:55	22:50	22:45	22:39	0:00
Loc PUC Rx Fr	0	0	0	0	0	0	0
Loc PUC Rx Bt	0	0	0	0	0	0	0
Loc PUC Tx Fr	0	0	0	0	0	0	0
Loc PUC Tx Bt	0	0	0	0	0	0	0
Sig Down Time	976	130	299	301	246	0	0
Signal Error	0	0	0	0	0	0	0
Signal T/O	62	8	18	19	17	0	0
Sig State Chg	1	0	0	1	0	0	0
Rx Full Stat	0	0	0	0	0	0	0
Rx LI Only	0	0	0	0	0	0	0
Discard Frame	0	0	0	0	0	0	0
Aborts	0	0	0	0	0	0	0
CRC Error	0	0	0	0	0	0	0
Octet Align	0	0	0	0	0	0	0
Length Error	0	0	0	0	0	0	0
_ ESC = Menu    -,+ = Page    >,< = Scroll    U = View By Day							

**Figure 9-2**  
*DTE Port Statistics (View by Interval)*

DTE PORT DAYS	ADTRAN	NXIQ	VIEW	STATISTICS	LOCAL
Leads On -->	CTS	DSR	DCD	Interval Remaining	54
Signaling State -->	DOWN				
	NA	NA	NA	NA	NA
Loc PVC Rx Fr	0	0	0	0	0
Loc PVC Rx Bt	0	0	0	0	0
Loc PVC Tx Fr	0	0	0	0	0
Loc PVC Tx Bt	0	0	0	0	0
Sig Down Time	0	0	0	0	0
Signal Error	0	0	0	0	0
Signal T/O	0	0	0	0	0
Sig State Chg	0	0	0	0	0
Rx Full Stat	0	0	0	0	0
Rx LI Only	0	0	0	0	0
Discard Frame	0	0	0	0	0
Aborts	0	0	0	0	0
CRC Error	0	0	0	0	0
Octet Align	0	0	0	0	0
Length Error	0	0	0	0	0
ESC = Menu	D = DLCI	- , + = Page	U = View Intervals		

**Figure 9-3**  
*DTE Port Statistics (View by Day)*

**Interval Remaining**

Number of seconds remaining in the current timed interval.

**Signaling State**

Indicates if the frame-relay signaling state is currently up or down.

**Local PVC Rx Frames**

Total frames received by the DTE port across the local management PVC.

**Local PVC Rx Bytes**

Total bytes received by the DTE port across the local management PVC.

**Local PVC Tx Frames**

Total frames transmitted by the DTE port across the local management PVC.

**Local PVC Tx Bytes**

Total bytes transmitted by the DTE port across the local management PVC.

**Signal Down Time**

Time in seconds the signaling state is down.

**Signal Error**

Number of signal frames received with PVC signaling protocol violations.

**Signal Timeouts**

Number of T392 timeouts that have occurred.

**Signal State Change**

Number of changes in the signaling protocol state.

**Rx Full Status**

Number of full status polls received on the DTE side.

**Rx LI Only**

Number of link integrity (LI) only polls received on the DTE side.



*On the DTE side, transmit and receive counts for full status and link integrity polls would be identical. Therefore, only receive counts are given.*

**Discard Frame**

Number of frames discarded by the NxIQ due to bad IP frames received on the management DLCI, transmission errors, or link violations. This count includes aborts, CRC errors, octet align, and length errors.

**Aborts**

Number of frames received without a closing flag. This transmission error is also reflected in the Discard Frame field.

**CRC Errors**

Number of frames received with CRC violations. This transmission error is also reflected in the Discard Frame field.

**Octet Align**

Number of frames received with a bit count that does not fall on 8-bit boundaries. This transmission error is also reflected in the Discard Frame field.

**Length Error**

Number of frames received with fewer than 5 octets or greater than 4500 octets. This link violation is also reflected in the Discard Frame field.

**EA Violation**

Number of frames received with an error in the extended address (EA) bit field of the frame-relay header.

**Encapsulation Error**

Number of frames received on the management DLCI that have RFC 1490 errors.

**Inactive DLCI**

Number of frames received on an inactive DLCI.

**Invalid DLCI**

Number of frames received on a DLCI that is out of range. The valid DLCI range is 16-1007.

**Unrouteable**

Number of frames received on the management DLCI with an IP address that does not match the NxIQ IP address.

**Network Port Statistics**

Information given is for the network port since the last reset. See *Figure 9-4* on page 55 and *Figure 9-5* on page 56 for both formats of the Network Port Statistic screens.

**Signaling State**

Indicates if the signaling state is currently up or down.

**Interval Remaining**

Number of seconds remaining in the current timed interval.

**Rx Frames**

Number of frames received by the network port.

**Rx Bytes**

Number of bytes received by the network port.

**Maximum Rx Throughput**

Maximum throughput sample in the receive direction for the given interval. This is displayed in Kbps.

**Average Rx Throughput**

Average throughput in the receive direction for the given interval. This is displayed in Kbps.

**Maximum Rx Utilization**

Maximum utilization sample in the receive direction for the given interval. Utilization is displayed as a percentage of network port bandwidth.

**Average Rx Utilization**

Average utilization sample in the receive direction for the given interval. Utilization is displayed as a percentage of network port bandwidth.

**Tx Frames**

Number of frames transmitted by the network port.

**Tx Bytes**

Number of bytes transmitted by the network port.

NETWORK PORT	ADTRAN	NXIQ	VIEW	STATISTICS	LOCAL		
Signaling State --> UP		Interval Remaining		54			
TSU state --> OPEN LOOP							
	DEC 3	22:55	22:50	22:45	22:39	0:00	0:00
Rx Frames	0	0	0	0	0	0	0
Rx Bytes	0	0	0	0	0	0	0
Max Rx Thru	0	0	0	0	0	0	0
Avg Rx Thru	0	0	0	0	0	0	0
Max Rx Util %	0%	0%	0%	0%	0%	0%	0%
Avg Rx Util %	0%	0%	0%	0%	0%	0%	0%
Tx Frames	216	112	104	0	0	0	0
Tx Bytes	23994	12544	11450	0	0	0	0
Max Tx Thru	1000	896	0	0	0	0	0
Avg Tx Thru	184	446	333	0	0	0	0
Max Tx Util %	0%	0%	0%	0%	0%	0%	0%
Avg Tx Util %	0%	0%	0%	0%	0%	0%	0%
Port UA Time	1138	246	299	301	292	0	0
Sig Down Time	0	0	0	0	0	0	0
Signal Error	0	0	0	0	0	0	0
ESC = Menu D = DLCI -, + = Page >, < = Scroll U = View By Day							

**Figure 9-4**  
*Network Port Statistics (View by Interval)*

#### Maximum Tx Throughput

Maximum throughput sample in the transmit direction for the given interval. This is displayed in Kbps.

#### Average Tx Throughput

Average throughput in the transmit direction for the given interval. This is displayed in Kbps.

#### Maximum Tx Utilization

Maximum utilization sample in the transmit direction for the given interval. Utilization is displayed as a percentage of network port bandwidth.

#### Average Tx Utilization

Average utilization sample in the transmit direction for the given interval. Utilization is displayed as a percentage of network port bandwidth.



NETWORK PORTS	ADTRAN	NXIQ	VIEW	STATISTICS	LOCAL
Signaling State --> UP					
TSU state --> OPEN LOOP					
	NA	NA	NA	NA	NA
Rx Frames	0	0	0	0	0
Rx Bytes	0	0	0	0	0
Max Rx Thru	0	0	0	0	0
Avg Rx Thru	0	0	0	0	0
Max Rx Util %	0%	0%	0%	0%	0%
Avg Rx Util %	0%	0%	0%	0%	0%
Tx Frames	0	0	0	0	0
Tx Bytes	0	0	0	0	0
Max Tx Thru	0	0	0	0	0
Avg Tx Thru	0	0	0	0	0
Max Tx Util %	0%	0%	0%	0%	0%
Avg Tx Util %	0%	0%	0%	0%	0%
Port UA Time	0	0	0	0	0
Sig Down Time	0	0	0	0	0
Signal Error	0	0	0	0	0

ESC = Menu    D = DLCI    -, + = Page    U = View Intervals

**Figure 9-5**  
*Network Port Statistics (View by Day)*

**Port UA Time**

Time in seconds the network port is unavailable for data delivery. This means that the T1 link is down or in test, or that the frame-relay signaling state is down.

**Signal Down Time**

Time in seconds the signaling state has been down.

**Signal Error**

Number of signal frames received with PVC signaling protocol violations.

**Signal Timeouts**

Number of T391 timeouts that have occurred.

**Signal State Change**

Number of changes in the signaling protocol state.

**Rx Full Status**

Number of full status responses received on the network side.

**Tx Full Status**

Number of full status polls transmitted by the NxIQ.

**Rx LI Only**

Number of link integrity only responses received on the network side.

**Tx LI Only**

Number of link integrity polls transmitted by the NxIQ.

**Async Status**

Number of asynchronous status messages received by the NxIQ.

**Discard Frame**

Number of frames discarded by the NxIQ due to bad IP frames received on the dedicated management DLCI, transmission errors, or link violations.

**Aborts**

Number of frames received without a closing flag. This transmission error is also reflected in the Discard Frame field.

**CRC Errors**

Number of frames received with CRC violations. This transmission error is also reflected in the Discard Frame field.

**Octet Align**

Number of frames received with a bit count that does not fall on 8-bit boundaries. This transmission error is also reflected in the Discard Frame field.

**T1 State Change**

Count of state changes for the T1 port.

**T1 UA Time**

Time in seconds the T1 link is down.



*The next five parameters (Signal Loss, Telco Test, AIS Alarm, Red Alarm, and Yellow Alarm) are events with two states: active and inactive. If the event occurs one or more times for the given interval, the field is active and **ALARM** is displayed. The first column of the View by Interval menu represents information for the entire current day. Therefore, once an alarm becomes active, it remains active in the first field for the entire 24-hour period.*

**Signal Loss**

If ALARM is displayed, a loss of signal occurred one or more times during the given interval.

**Telco Test**

If ALARM is displayed, a loopback code was received on the T1 interface one or more times during the given interval.

**AIS Alarm**

If ALARM is displayed, unframed all ones were received on the T1 interface one or more times during the given interval. This indicates that the T1 is out of service.

**Red Alarm**

If ALARM is displayed, a loss of frame synchronization occurred one or more times during the given interval.

**Yellow Alarm**

If ALARM is displayed, the telco end of the T1 was out of frame sync one or more times during the given interval.

**Path Code**

Number of path code violations. Path code violations include frame bit errors for D4 framing and superframes with CRC errors for ESF framing.

**Line Code**

Number of line code violations. Line code violations include BPVs that are not part of B8ZS code or excess zero violations.

**Length Error**

Number of frames received with fewer than 5 octets or greater than 4500 octets. This link violation is also reflected in the Discard Frame field.

**EA Violation**

Number of frames received with an error in the extended address (EA) bit field of the frame-relay header.

**Encapsulation Error**

Number of frames received on a dedicated management DLCI that have RFC 1490 errors. These errors are also reflected in the Discard Frames field.



*If both management DLCIs are dedicated, the Encapsulation Error field is not applicable. See the section **Management DLCI 1 and 2 Mode** in Chapter 7: Configuring the Network Port for more information.*

**Inactive DLCI**

Number of frames received on an inactive DLCI.

**Invalid DLCI**

Number of frames received on a DLCI that is out of range. The valid DLCI range is 16-1007.

**Unrouteable**

Number of frames received on a dedicated management DLCI with an IP address that does not match the NxIQ IP address.



*If both management DLCIs are dedicated, the Unrouteable field is not applicable. For more information, see the **Management DLCI 1 and 2 Mode** section in Chapter 7: Configuring the Network Port.*

## DLCI Statistics

Access specific DLCI statistics by pressing **D** from the Network Statistics menu. Enter the DLCI number for information on a specific DLCI (displayed in the View by Interval and Day formats). For a status summary of all available DLCIs, select DLCI LIST from the View Statistic menu shown in *Figure 9-1* on page 47. *Figure 9-6* shows the statistics menu for a specific DLCI.

		ADTRAN NxlQ VIEW STATISTICS						LOCAL
DLCI 100	A	Throughput: Tx	0	Rx	0	Remaining 203		
		Utilization: Tx	0%	Rx	0%			
		DEC 3	23:00	22:55	22:50	22:45	22:39	
Rx Frames		0	0	0	0	0	0	
Rx Bytes		0	0	0	0	0	0	
Max Rx Thru		0	0	0	0	0	0	
Avg Rx Thru		0	0	0	0	0	0	
Max Rx Util %		0%	0%	0%	0%	0%	0%	
Avg Rx Util %		0%	0%	0%	0%	0%	0%	
Tx Frames		285	44	137	104	0	0	
Tx Bytes		31722	4928	15344	11450	0	0	
Max Tx Thru		1000	896					
Avg Tx Thru		214	446	447	333	0	0	
Max Tx Util %		0%	0%	0%	0%	0%	0%	
Avg Tx Util %		0%	0%	0%	0%	0%	0%	
PVC IA Time		0	0	0	0	0	0	
Rx FECH		0	0	0	0	0	0	
Tx FECH		0	0	0	0	0	0	
		ESC = Menu	-,+ = Page	>,< = Scroll	U = View By Day			

**Figure 9-6**  
*DLCI Statistics for a Specific DLCI (View by Interval)*

### DLCI Statistics for a Specific DLCI

#### Throughput (Tx and Rx)

Displays the current throughput sample for this PVC.

#### Utilization

Displays the current CIR utilization sample for this PVC.

**Remaining**

Number of seconds remaining in the current timed interval.

**Rx Frames**

Number of frames received by the network port on the specified DLCI.

**Rx Bytes**

Number of bytes received by the network port on the specified DLCI.

**Maximum Rx Throughput**

Maximum throughput sample in the receive direction for the given interval. This is displayed in Kbps.

**Average Rx Throughput**

Average throughput in the receive direction for the given interval. This is displayed in Kbps.

**Maximum Rx Utilization**

Maximum utilization sample in the receive direction for the given interval. Utilization is displayed as a percentage of CIR.

**Average Rx Utilization**

Average utilization in the receive direction for the given interval. Utilization is displayed as a percentage of CIR.

**Tx Frames**

Number of frames transmitted by the network port on the specified DLCI.

**Tx Bytes**

Number of bytes transmitted by the network port on the specified DLCI.

**Maximum Tx Throughput**

Maximum throughput sample in the transmit direction for the given interval. This is displayed in Kbps.

**Average Tx Throughput**

Average throughput in the transmit direction for the given interval. This is displayed in Kbps.

**Maximum Tx Utilization**

Maximum utilization sample in the transmit direction for the given interval. Utilization is displayed as a percentage of CIR.

**Average Tx Utilization**

Average utilization sample in the transmit direction for the given interval. Utilization is displayed as a percentage of CIR.

**PVC IA Time**

Time in seconds that the PVC is in the inactive state.

**Rx FECN**

Number of frames received on the network port over the specified DLCI with the FECN bit of the frame-relay header enabled.

**Tx FECN**

Number of frames transmitted from the network port over the specified DLCI with the FECN bit of the frame-relay header enabled.

**Rx BECN**

Number of frames received on the network port over the specified DLCI with the BECN bit of the frame-relay header enabled.

**Tx BECN**

Number of frames transmitted from the network port over the specified DLCI with the BECN bit of the frame-relay header enabled.

**Rx DE**

Number of frames received on the network port over the specified DLCI with the discard eligibility (DE) bit of the frame-relay header enabled.

**Tx DE**

Number of frames transmitted from the network port over the specified DLCI with the DE bit of the frame-relay header enabled.

**Rx CR**

Number of frames received on the network port over the specified DLCI with the CR bit of the frame-relay header enabled.

**Tx CR**

Number of frames transmitted from the network port over the specified DLCI with the CR bit of the frame-relay header enabled.

**Lost Packets**

Number of packets lost across the PVC. This field is applicable only if the network port's Sequence Number Checking option (accessed through the Network Port Configuration menu) is ENABLED.

**Remote Lost Packets**

Number of lost packets reported by the remote NxIQ. This field is applicable only if the network port's Sequence Number Checking option (accessed through the Network Port Configuration menu) is ENABLED.

**Rx Burst Seconds**

Amount of time (in seconds) that throughput in the receive direction is greater than CIR.

**Tx Burst Seconds**

Amount of time (in seconds) that throughput in the transmit direction is greater than CIR.

**Minimum Rx Frame**

Size of smallest frame received across the DLCI.

**Maximum Rx Frame**

Size of largest frame received across the DLCI.

**Average Rx Frame**

Average size of frames received across the DLCI.



**Minimum Tx Frame**

Size of smallest frame transmitted across the DLCI.

**Maximum Tx Frame**

Size of largest frame transmitted across the DLCI.

**Average Tx Frame**

Average size of frames transmitted across the DLCI.

**Minimum Frame Delay**

Minimum round trip delay of the DLCI. This field is applicable only if the network port's PVC Delay Measurement option (accessed through the Network Port Configuration menu) is ENABLED.

**Maximum Frame Delay**

Maximum round trip delay of the DLCI. This field is applicable only if the network port's PVC Delay Measurement option (accessed through the Network Port Configuration menu) is ENABLED.

**Average Frame Delay**

Average round trip delay of the DLCI. This field is applicable only if the network port's PVC Delay Measurement option (accessed through the Network Port Configuration menu) is ENABLED.

**PVC State Change**

Number of changes in the PVC state.

## DLCI List

This menu lists all available DLCIs and classifies them as active (A), inactive (I), or unknown (U) as shown in *Figure 9-7*. A byte and frame break out of each DLCI is also provided including an in/out count and a count of how many frames were received with FECN, BECN, or DE enabled.

ADTRAN NXIQ VIEW DLCI STATISTICS							LOCAL	
DLCI		Frames				Bytes		
		In	Out	FECN	BECN	DE	In	Out
100	A	0	307	0	0	0	0	34186
1005	A	0	0	0	0	0	0	0
1006	A	0	0	0	0	0	0	0
UNKNOWN		0	0				0	0
INACTIVE		0	0				0	0
SIGNAL		0	0				0	0

ESC = Prev Menu                      +, - = Page

**Figure 9-7**  
*DLCI Statistics Summary for All Available DLCIs*

## System Statistics

The system time and date (as set in the System Configuration menu) and the software revision are displayed in this menu. Also, the elapsed time since the unit was turned on (or since the last restart) is given in seconds. The buffer information provided in this menu is used mainly by ADTRAN technical support in troubleshooting situations. See *Figure 9-8*.

ADTRAN NXIQ VIEW SYSTEM STATISTICS					LOCAL
Buf Type	Curr Use	Curr Free	Curr Use Per	High Buf Use	Avg Buf Use
1	15	65	18	15	15
2	0	5	0	2	0
3	0	0	0	0	0
4	2	18	10	1	0
5	15	108	12	15	15

```

System Time ---> 23:02
System Date ---> WED 12-03-97
Elapsed Time --> 1253
S/W Revision --> 315F

```

**Figure 9-8**  
*System Statistics Screen*

## VIEWING STATISTICAL INFORMATION (FRONT PANEL INTERFACE)

To view statistical information, select **1)STATUS** from the Main menu. Then select **Port Status** and choose **Nx-IQ**. From this menu, choose to view **DTE**, **Network**, or **Statistics** or to reset the statistics. The first Statistics screen appears. Scroll through the remaining screens using the arrow keys. Statistic counts are running totals for the current day (i.e., since 12 AM).

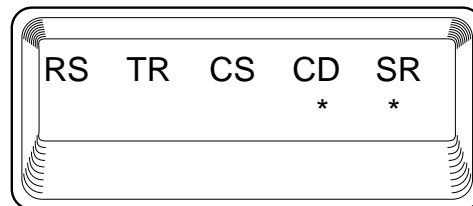
### DTE Port Statistics Available on Front Panel

The following information is displayed when the DTE port is selected.

#### Control Signal Status Screen

An asterisk (\*) indicates that the signal is active for the DTE port. See *Figure 9-9*. A list of signals is shown below:

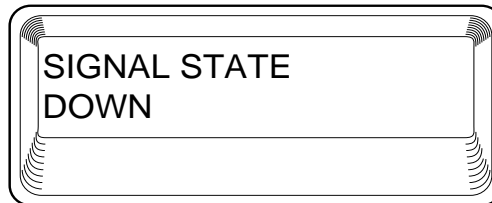
RS	request to send
TR	data terminal ready
CS	clear to send
CD	carrier detect
SR	data set ready



**Figure 9-9**  
*Control Signal Status Screen*

**Signal State**

Current signaling state of DTE port (up or down). See *Figure 9-10*.



**Figure 9-10**  
*Signal State Screen*

**Signal State Change**

Number of changes in the signaling protocol state.

**Signal Timeouts (TOS)**

Total T392 timeouts that have occurred since the last reset.

**Signal Errors**

Total signal frames received with PVC signaling protocol violations.

**Errored Frames**

Total errored frames received since last reset.

**CRC Errors**

Number of frames received with CRC violations.

**Abort Frames**

Total frames received without a closing flag.

**Octet Align**

Number of frames received with a bit count that does not fall on 8-bit boundaries.

**Signal Down Time**

Time in seconds that signaling state has been down.

## Network Port Statistics Available on Front Panel

### Signal State

Current state of the network port (up or down).

### Signal State Change

Number of changes in the signaling protocol state.

### Signal Timeouts (TOS)

Total T391 timeouts that have occurred since the last reset.

### Signal Errors

Total signal frames received with PVC signaling protocol violations.

### Frames In

Total received frames since last reset.

### Frames Out

Total transmitted frames since last reset.

### Errored Frames

Total errored frames received since last reset.

### CRC Errors

Number of frames received with HDLC CRC violations.

### Abort Frames

Total frames received without a closing flag.

### Octet Align

Number of frames received with a bit count that does not fall on 8-bit boundaries.

### Port UA Time

Time in seconds the network port is unavailable for data delivery. This can mean that the T1 link is down or in test, or that the PVC signaling state is down.

**Line Code**

Number of line code violations. Line code violations include BPVs that are not part of B8ZS code or excess zero violations.

**Path Code**

Number of path code violations. Path code violations include frame bit errors for D4 framing and superframes with CRC errors for ESF framing.

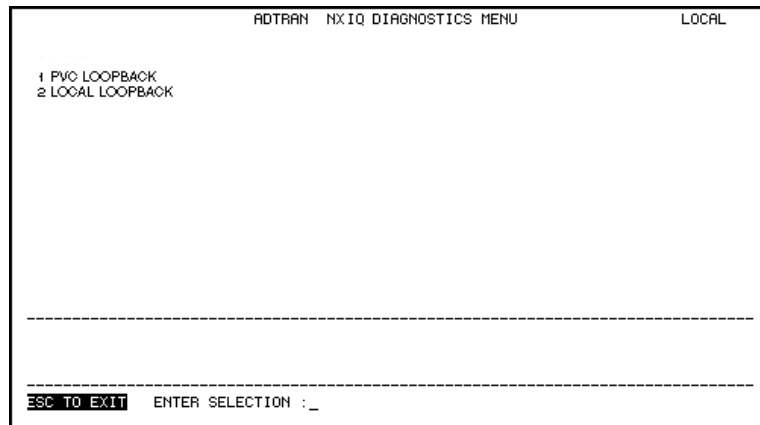
# Chapter 10

## Diagnostics

---

### DIAGNOSTICS

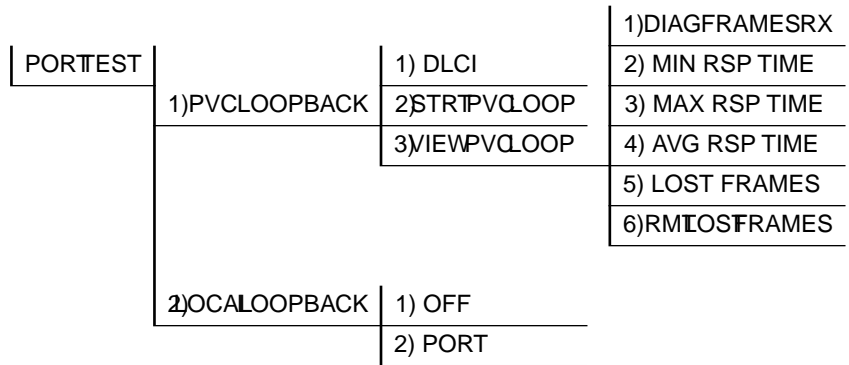
This menu allows you to perform diagnostics by initiating PVC loopback tests or a local loopback. See *Figure 10-1* for the Terminal Diagnostics menu. See *Figure 10-2* on page 72 for the Front Panel menu tree.



**Figure 10-1**  
*Terminal Diagnostics Menu*



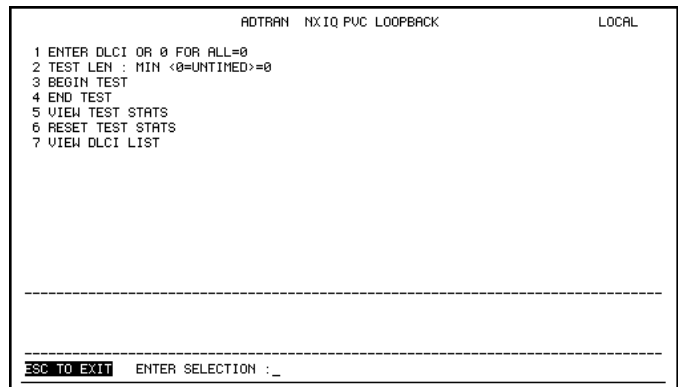
The front panel menus can be accessed by selecting **4) TEST** at the Main Menu. Next select **3) PORT TEST** and choose the **NxIQ**.



**Figure 10-2**  
*Front Panel Diagnostics Menu (with ESP Ethernet Card Installed)*

### PVC Loopback

A PVC loopback test is a non-intrusive loopback option for each PVC. During this test, the NxIQ periodically sends test frames to the remote NxIQ which are then returned for analysis. The bandwidth required is approximately 1 Kbps for each PVC in test. See *Figure 10-3* for the terminal menu.



**Figure 10-3**  
*PVC Loopback Menu*

**Enter DLCI or 0 for All (DLCI)**

Enter the DLCI of the PVC to be tested (or enter 0 to test all available PVCs).

**Test Length**

Amount of time (in minutes) that you want the test to take place. Enter 0 for a continuous test.

**Begin Test**

Starts the test.

**End Test**

Ends the test in progress prematurely or terminates a continuous test.

**View Test Stats**

Displays the Test Statistics menu shown in *Figure 10-4* on page 74. Descriptions of each field in the Test Statistics menu follow:

**PVC Active/Inactive/Undefined**

Displays current state of the selected PVC as determined by the switch.

- **Active:** The PVC is currently operational.
- **Inactive:** There is currently a physical or frame relay layer problem at the remote end of the PVC, or a problem exists inside the frame relay cloud for the selected PVC.
- **Undefined:** The PVC is undefined for the switch.

**Test Active/No Test Active**

Displays current testing state of the NxlQ.

**Frames Rx**

Number of frames received on the selected PVC during the current loopback test.

**Frames Tx**

Number of frames transmitted across the selected PVC during the current loopback test.

**Dropped Packets**

Number of packets dropped in the receiving direction (traveling from the remote NxIQ to the local NxIQ).

**Remote Dropped Packets**

Number of packets dropped in the transmitting direction (traveling from the local NxIQ to the remote NxIQ).

**Minimum Loop Response Time**

Minimum round-trip time (in seconds) for the current test.

**Maximum Loop Response Time**

Maximum round-trip time (in seconds) for the current test.

**Average Loop Response Time**

Average round-trip time (in seconds) for the current test.

```

ADTRAN  NXIQ VIEW TEST STATS                                LOCAL
1 ENTER DLCI=21

PVC ACTIVE

NO TEST ACTIVE
FRAMES RX----->          0          FRAMES TX----->          20
DROPPED PKTS----->       0          RMT DROPPED PKTS-->       0
MIN LOOP RSP TIME->        0          MAX LOOP RSP TIME->        0
AUG LOOP RSP TIME->        0

-----

ESC TO EXIT  ENTER SELECTION : _
    
```

**Figure 10-4**  
*Test Status Screen*

**Reset Test Stats**

Resets the information shown in the Test Statistics menu.

**View DLCI List**

See the DLCI List section in *Chapter 9: Statistics* on page 65 for a description of this menu.

**Local Loopback**

Select PORT to enable a bidirectional local loopback.



# Chapter 11

## Utility Menu

---

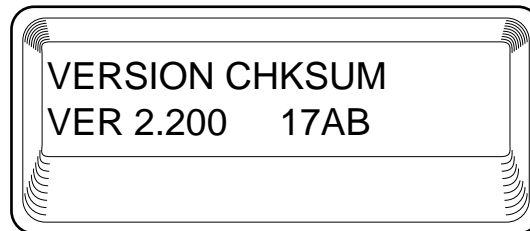
The Utility menu applies to the front panel operation only.

### Software Revision

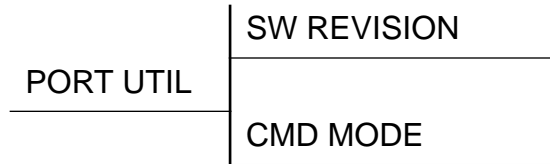
This menu displays the software version and checksum and is shown in *Figure 11-1*, below. The Utility Menu Tree is shown in *Figure 11-2* on page 78. Press **CANCEL** to return to the Util menu.

### CMD Mode

Factory use only.



**Figure 11-1**  
*System Statistics Screen*



**Figure 11-2**  
*Utility Menu Tree*

# Appendix A

## Pinouts

---

The following table gives the pin assignments for the NxIQ card connectors. For more information on these connectors, see *Chapter 2: Installation*.

**Table A-A**  
*Pin Assignments for Control Connector*

RJ Pin #	Function	Direction
1	GND	
2	TRS	I
3	TD	I
4	DSR	O
5	RD	O
6	CTS*	O
7	DTR	I
8	DCD	O

\*Used for hardware flow control



**Table A-B**  
*V.35 Nx56/64 Interface Pinout*  
*26-Pin Subminiature D*

<b>Pin #</b>	<b>Function</b>
1	Protective Ground
4	RTS
5	CTS
6	DSR
7	SIGNAL GROUND
8	DCD
9	TD-A
10	TD-B
11	RD-A
12	RA-B
13	ETC-A
20	DTR
22	TC-A
23	TC-B
24	RC-A
25	RC-B
26	ETC-B

**Table A-C**  
*V.35 DBU Connector Pinout*

<b>Pin #</b>	<b>Function</b>
1	Protective Ground
4	RTS
5	CTS
6	DSR
7	Signal Ground
8	DCD
9	TD-A
10	TD-B
11	RD-A
12	RA-B
13	ETC-A
17	RI
20	DTR
22	TC-A
23	TC-B
24	RC-A
25	RC-B
26	ETC-B

## Appendix A. Pinouts

---

# Appendix B

## Specifications Summary

---

### SPECIFICATIONS AND FEATURES

This appendix provides the standard specifications and features of the NxIQ.

#### **Operating Modes** FT1/T1 frame relay

#### **DTE Interfaces**

- Subminiature D, 26-pin
- 56K or 64K synchronous DTE rates: 56 to 1.536, Nx56, or Nx64 Kbps (N=1 to 24)
- Control: EIA-232, 8-pin modular connector (DB-25 adapter provided)

#### **Diagnostics**

- PVC loopback
- Local port loopback
- 511 Bert test

**SNMP**

- Embedded SNMP and TELNET inband access through shared or dedicated PVC
- Integrated SLIP/PPP (async) port
- 10baseT interface (TSU “e” series products only)
- RFC 1213 MIB II, RFC 1315 and 1406 compliant
- ADTRAN enterprise MIB for frame monitoring and TSU control

**Agency Approvals**

- FCC Part 15, Class A
- UL and CUL

**Relevant Protocol Standards**

- Frame Relay
  - ANSI T1.606
  - ANSI T1.607
  - ANSI T1.617
  - ANSI T1.618
  - ITU Q.922
  - ITU Q.933
  - Frame Relay Forum FRF 1.1 and 3.1
  - RFC 1490
- SLIP
  - RFC 1055
- SNMP MIB
  - RFC 1315
  - RFC 1213
  - RFC 1406

**Physical**

Operating temperature: 0 to 50 °C (32 to 122 °F)

Storage: -20 to 70 °C (-4 to 158 °F)

Relative humidity: Up to 95%, non-condensing

# Index

---

## A

- abort changes 16
  - about 23
  - access 72
- ADTRAN Equipment Warranty 5
- ADTRAN NxIQ 22,23
- ADTRAN Shipments Include 7
- ADTRAN Web page 7
- ANSI 3

## B

- branches of menu 16

## C

- change password 43
- configuration 16, 33, 37
- configuration menu 29
- configuration requirements 21,  
24, 26
- connection 13
- control port 10
- Control Port Mode 44
- control program 4
- CPE and frame relay equipment 2,  
3
- customer provides 8

## D

- data link connection identifiers 40
- dedicated PVC management
  - application 28
- definition of DLCIs 40
- diagnostics 71
- diagnostics,main menu 16
- dial backup 11
- dial backup applications 10
- DLCI 65
- DLCI statistics 60
- DLCI statistics summary for all  
available DLCIs 65
- DLCIs 40
- DTE connector 10
- DTE data connection 11
- DTE port 33, 67
- DTE port configuration 34, 35
- DTE port menu tree 34
- DTE port statistics 50
- DTE port statistics (view by day)  
51
- DTE Port Statistics (View by  
Interval) 50
- DTE/network port 1

## E

- embedded SNMP 2, 3

**F**

features, NxIQ 2  
for SNMP management not accessed through the DTE or network port 8  
frame relay monitoring 2  
frame relay options 35, 39  
frame relay virtual circuits 3  
front panel diagnostics menu (with ESP ethernet card installed) 72  
front panel interface 67  
front panel interface menu tree 32  
front panel menus 72  
front panel operation 13  
front panel utility menu 77

**H**

history interval count 41  
history interval size 45  
hot keys 49

**I**

inband management 23  
inband PVC SNMP/TELNET 19  
index to organized data 4  
interfaces 21, 29  
IP Address 43

**L**

local and remote configuration for NxIQ 29  
local loopback 71  
local PVC management 23, 24  
local PVC management application 24  
local VT 100 terminal management 20  
logout (terminal menu only) 16

loopback tests 71

**M**

main menu 16  
management applications 19  
management data link connection identifier 36, 40  
management options 19  
message protocol 4  
MIB 4  
minimum configuration requirements 21, 22, 24

**N**

network management station 4  
network manager 4  
network port 37  
network port 37, 38, 39  
network port statistics 53  
NxIQ 1, 2, 3, 4, 10, 19, 29  
NxIQ features 83  
NxIQ front panel menu structure 17  
NxIQ menu structure 15,16  
NxIQ option module 1  
NxIQ SNMP feature 3  
NxIQ specifications 83

**O**

operation, front panel 13  
operation, VT 100 terminal connection 13  
out-of-band management 22  
out-of-band management application example 22  
out-of-band SNMP/TELNET 19

**P**

physical layer options 34, 38  
pin assignments for NxIQ and ESP  
  ethernet card connectors 79  
procedure for using VT 100  
  terminal 13  
product overview, NxIQ 1  
PVC 3  
PVC count 41  
PVC loopback 71  
PVC loopback test 71, 72  
PVC management 36  
PVC Options 41

**R**

read community name 44  
rear panel 10  
receipt inspection 7  
remote login facility 4  
repair policy 5  
RMA 5

**S**

save configuration 16  
shared PVC management 25, 26  
shared PVC management applica-  
  tion 26  
shipping damage 7  
SNMP 1, 4  
SNMP access 1  
SNMP and TELNET management  
  21  
SNMP management 3  
specifications and features of the  
  NxIQ 83  
standard features for NxIQ 83  
statistical information 41, 67  
statistics 67  
submenus relating to statistics 29  
subnet mask 43

**SVC 3**

system configuration 43, 44, 45  
system configuration menu 44  
system statistics 66

**T**

TELNET 4  
terminal configuration menu 30  
terminal configuration menu tree  
  31  
terminal interface 47  
terminal login menu 14  
terminal menus 4

terminal network port frame  
  relay options menu 39  
terminal statistics display options  
  48  
test status screen 74  
tests 71  
three modes of tests 23  
trap manager DLCI 45  
trap manager IP address 45

**U**

utility menu 77  
utility menu tree 78

**V**

V.35 connector 11  
V.35 port 10  
view by day 48  
view by interval 48  
view statistics 16  
view statistics menu 47  
viewing statistical information 47,  
  67  
viewing statistics on front panel 67  
VT 100 19



## Index

---

VT 100 management access 21  
VT 100 management application ex-  
ample 20  
VT 100 terminal 13  
VT 100 terminal connection 13  
VT 100 terminal management 20  
VT 100, procedure for using 13

## W

wide area network 2  
write community name 45  
www.adtran.com 7

## **Product Support Information**

### **Presales Inquiries and Applications Support**

Please contact your local distributor, ADTRAN Applications Engineering, or ADTRAN Sales:

Applications Engineering      (800) 615-1176

Sales      (800) 827-0807

### **Post-Sale Support**

Please contact your local distributor first. If your local distributor cannot help, please contact ADTRAN Technical Support and have the unit serial number available.

Technical Support      (888) 4ADTRAN

### **Repair and Return**

If ADTRAN Technical Support determines that a repair is needed, Technical Support will coordinate with the Customer and Product Service (CAPS) department to issue an RMA number. For information regarding equipment currently in house or possible fees associated with repair, contact CAPS directly at the following number:

CAPS Department      (256) 963-8722

Identify the CAPS number clearly on the package (below address), and return to the following address:

ADTRAN, Inc.  
CAPS Department  
901 Explorer Boulevard  
Huntsville, Alabama 35806

RMA # \_\_\_\_\_

