

# Getting Started

The Groups application enables you to create groups, which can be used in various policy conditions of PolicyView QoS and SecureView ACL policies. Groups are stored on an LDAP (Lightweight Directory Access Protocol) repository that is automatically installed with the Groups application and resides on the same device as the OmniVista server. When the switches in the network are notified to re-cache their policy information, the firmware loads the groups referred by these policies.

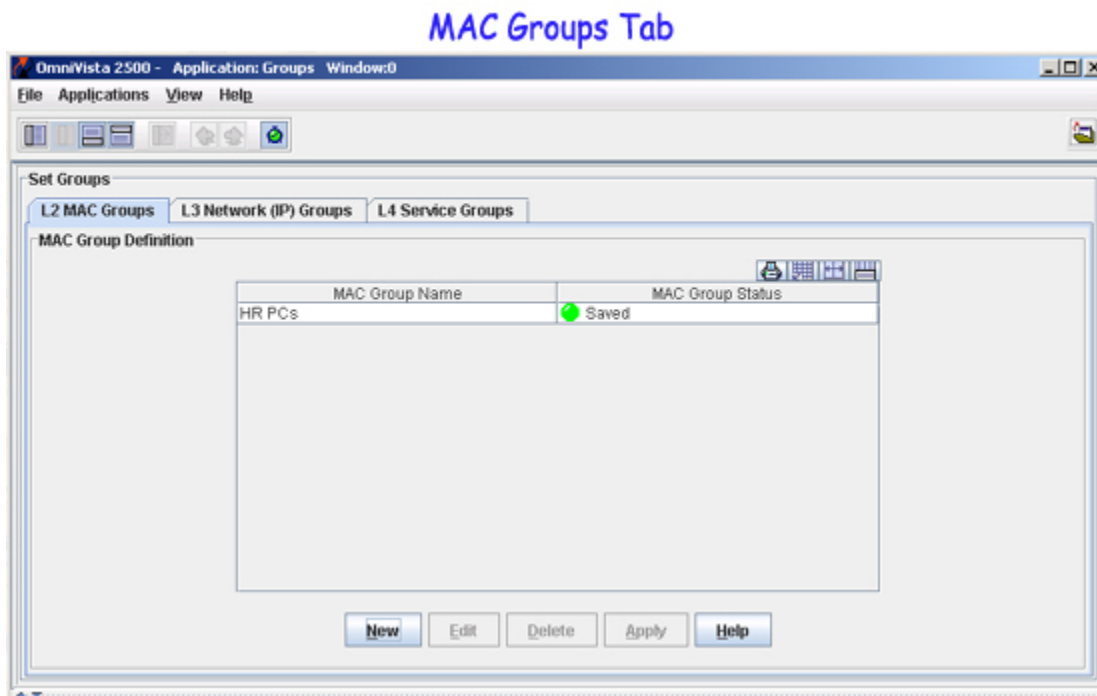
When you first start the Groups application, the **L2 MAC Groups**, the **L3 Network (IP) Groups**, and the **L4 Service Groups** tabs are displayed. Any existing MAC groups are also displayed.

The Groups application enables you to create three types of groups:

- MAC Groups
- Network (IP) Groups
- Service Groups

## L2 MAC Groups Mode Overview

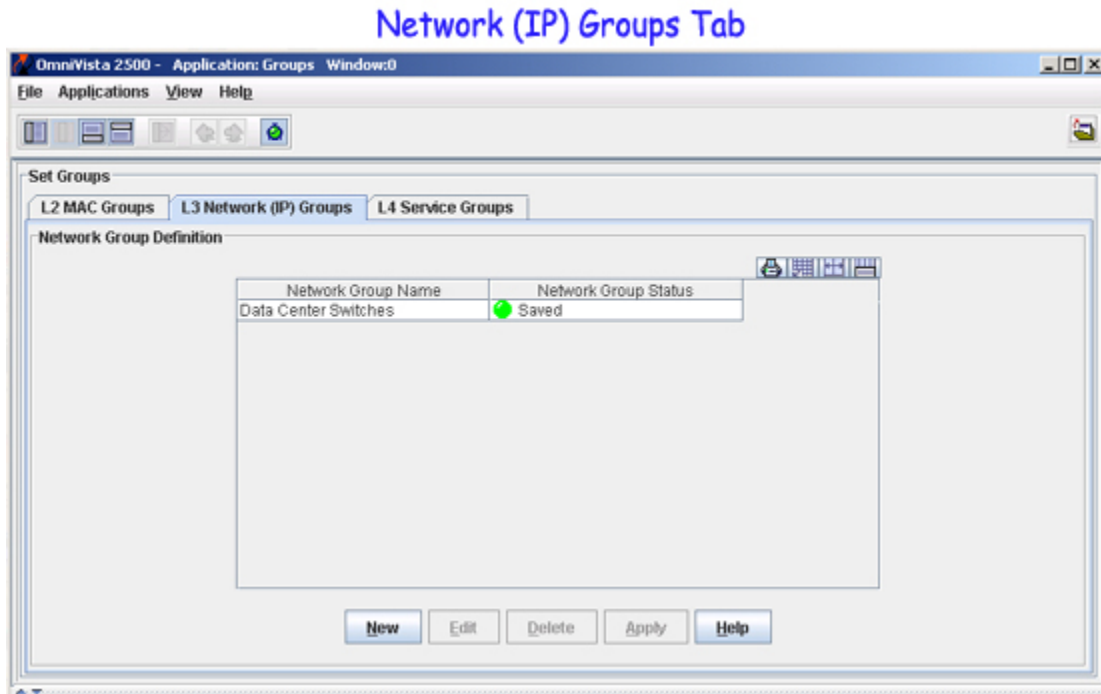
The **L2 MAC Groups** tab enables you to create MAC groups, which can be used in creating various policy conditions, such as source MAC group condition and destination MAC group condition.



To learn more about the **L2 Mac Groups** tab, [click here](#).

## L3 Network (IP) Groups Mode Overview

The **L3 Network (IP) Groups** tab enables you to create Network groups, which can be used in creating various policy conditions, such as source Network group condition and destination Network group condition.

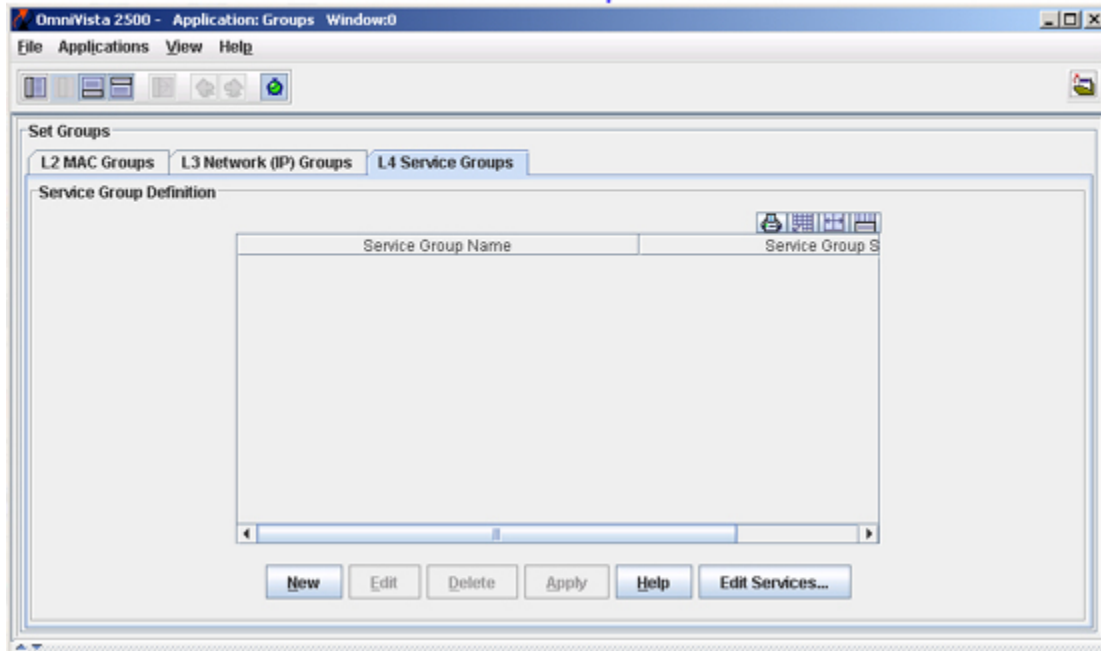


To learn more about the **L3 Network (IP) Groups** tab, click [here](#).

## L4 Service Groups Mode Overview

The **L4 Service Groups** tab enables you to create service groups, which can be used in creating various policy conditions, such as Service group condition.

### Service Groups Tab

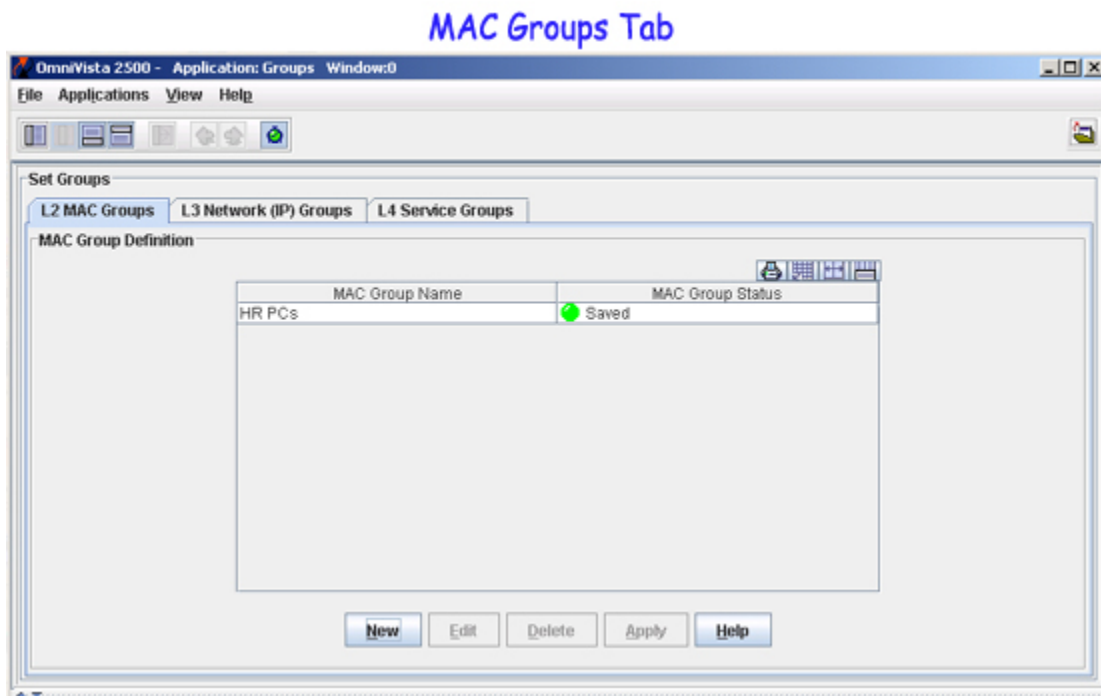


To learn more about the **L4 Service Groups** tab, click [here](#).

# The MAC Groups Tab

The **L2 MAC Groups** tab displays the MAC groups that exist in the LDAP repository. The MAC groups created using this tab can be used for creating policy conditions, such as SecureView ACL conditions and PolicyView QoS conditions. The MAC Groups tab helps you to do the following:

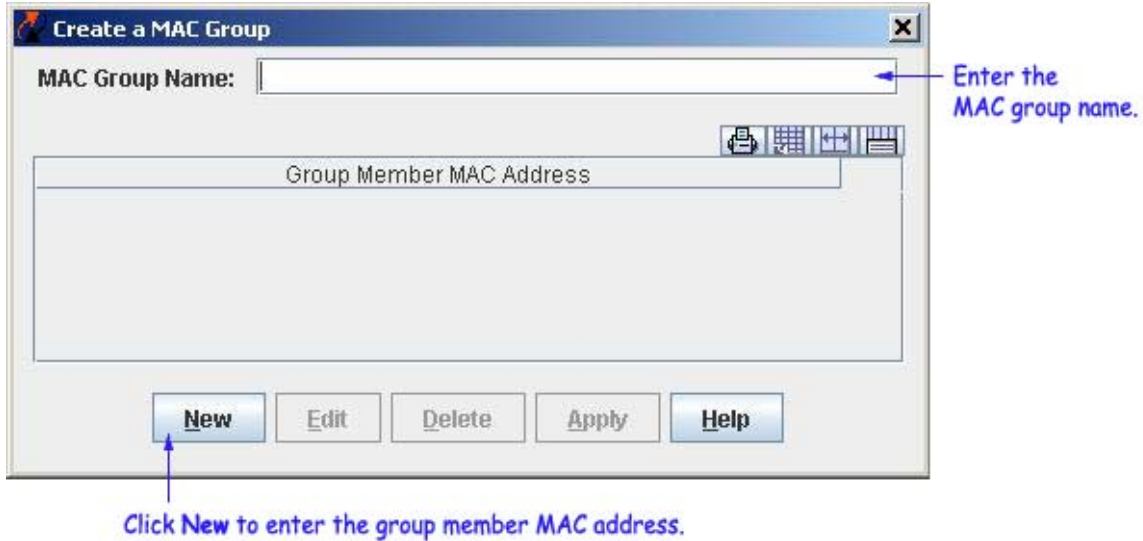
- Create a MAC Group
- Edit a MAC Group
- Delete a MAC Group



## Creating a MAC Group

Follow the steps below to create a MAC group.

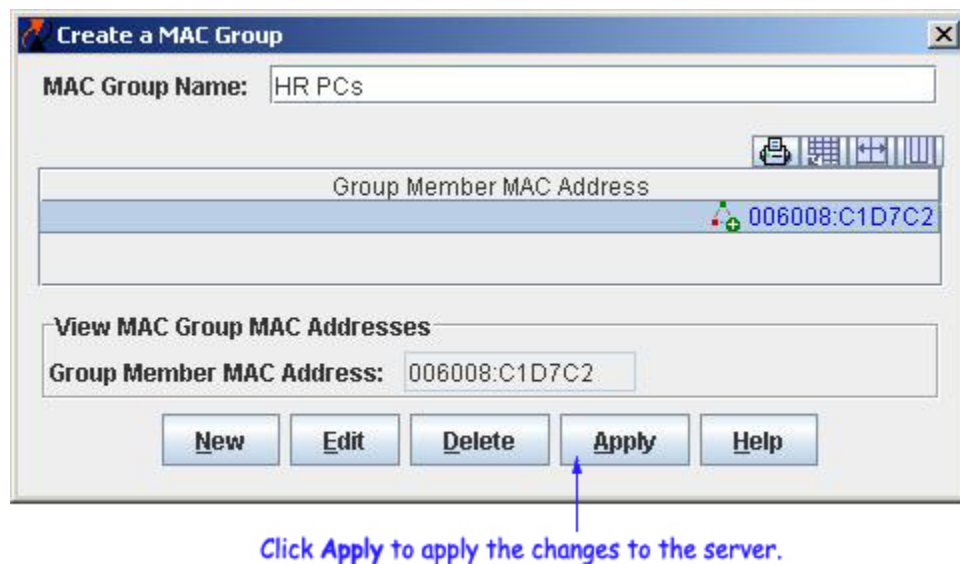
1. Click the **New** button in the **L2 MAC Groups** tab. The **Create a MAC Group** window appears (as shown below).



2. Enter the group name in the **MAC Group Name** field.
3. Click the **New** button. The **Create MAC Group MAC Addresses** panel appears.
4. Enter the MAC address in the **Group Member MAC Address** field.

**Note:** At least one MAC address must be entered for a MAC group.

5. Click the **OK** button. The created group member is displayed in the **Group Member MAC Address** list, and the **Apply** button is enabled (as shown below). Repeat steps 3 to 5 to add additional group member MAC address(es).



6. Click the **Apply** button to apply the changes to the LDAP repository. You can see the created MAC group in the **MAC Group Definition** table.

## Editing a MAC Group

Follow the steps below to edit a MAC group.

1. Select the desired group from the **MAC Group Definition** table and click the **Edit** button. The **Edit Addresses for MAC Group** window appears (as shown below).



Click **Delete** to delete a group member MAC address(es) of this MAC group.

Click **Edit** to edit a group member MAC address.

Click **New** to add a group member MAC address to this MAC group.

2. Make necessary changes in the **Edit Addresses for MAC Group** window.

**Note:** A MAC group name cannot be changed. If you want to change a MAC group name, you have to delete and recreate the group.

3. The **Apply** button is enabled after the necessary changes are made. Click the **Apply** button to apply the changes to the server.

## Deleting a MAC group

Follow the steps below to delete a MAC group.

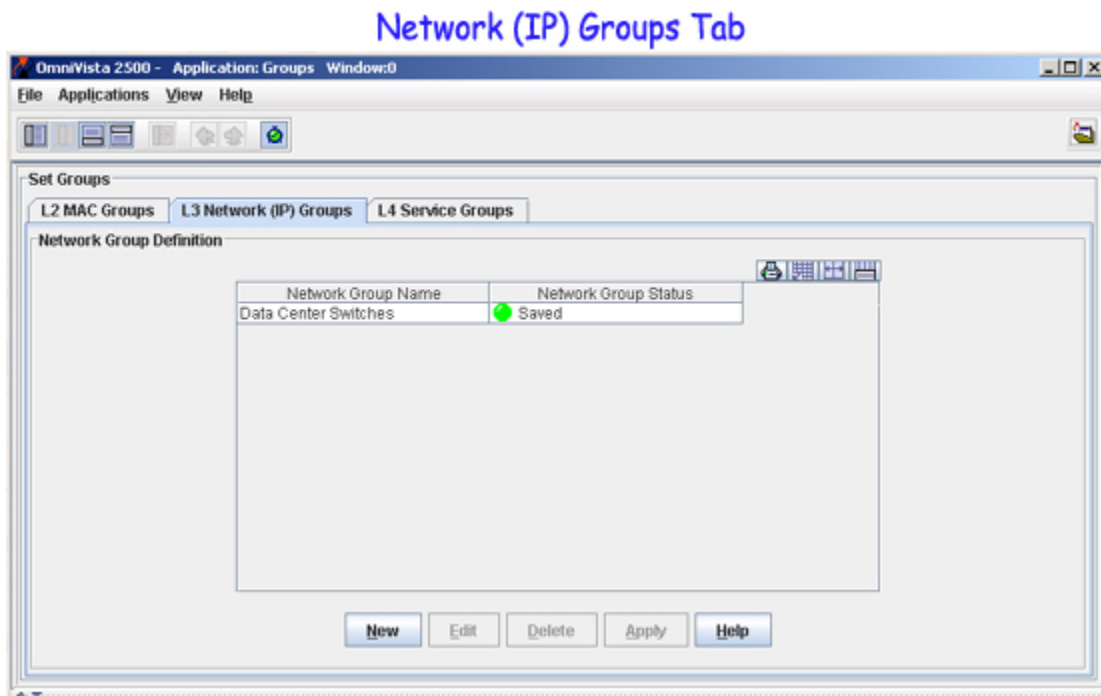
1. Select the desired group from the **MAC Group Definition** table.
2. Click the **Delete** button. The MAC group status changes from "Saved" to "Unsaved Delete". Repeat steps 1 and 2 to delete additional groups.
3. Click the **Apply** button to apply the changes to the server.

**Note:** MAC groups that are in use by policy conditions cannot be deleted. To delete such MAC groups, de-select them from the policy conditions.

# The Network (IP) Groups Tab

The **L3 Network (IP) Groups** tab displays the network groups that exist in the LDAP repository. The network groups created using this tab can be used for creating policy conditions, such as SecureView ACL conditions and PolicyView QoS conditions. The Network Groups tab helps you to do the following:

- Create a Network Group
- Edit a Network Group
- Delete a Network Group

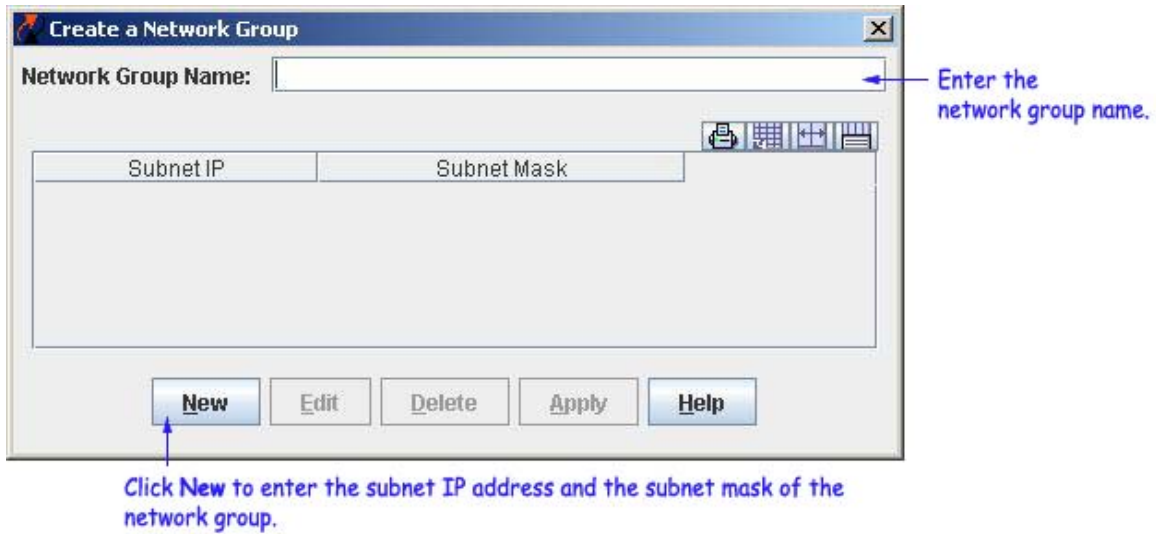


## Creating a Network Group

Follow the steps below to create a network group.

1. Click the **New** button in the **L3 Network (IP) Groups** tab. The **Create a Network Group** window appears (as shown below).





2. Enter the group name in the **Network Group Name** field.
3. Click the **New** button. The **Create Network Group IP Addresses** panel appears.
4. Enter the IP address in the **Subnet IP** field.

**Note:** At least one IP address must be entered for a network group.

5. Click the **OK** button. The **Apply** button at the bottom of the **Create a Network Group** window is enabled (as shown below). Repeat steps 3 to 5 to add additional IP address(es).

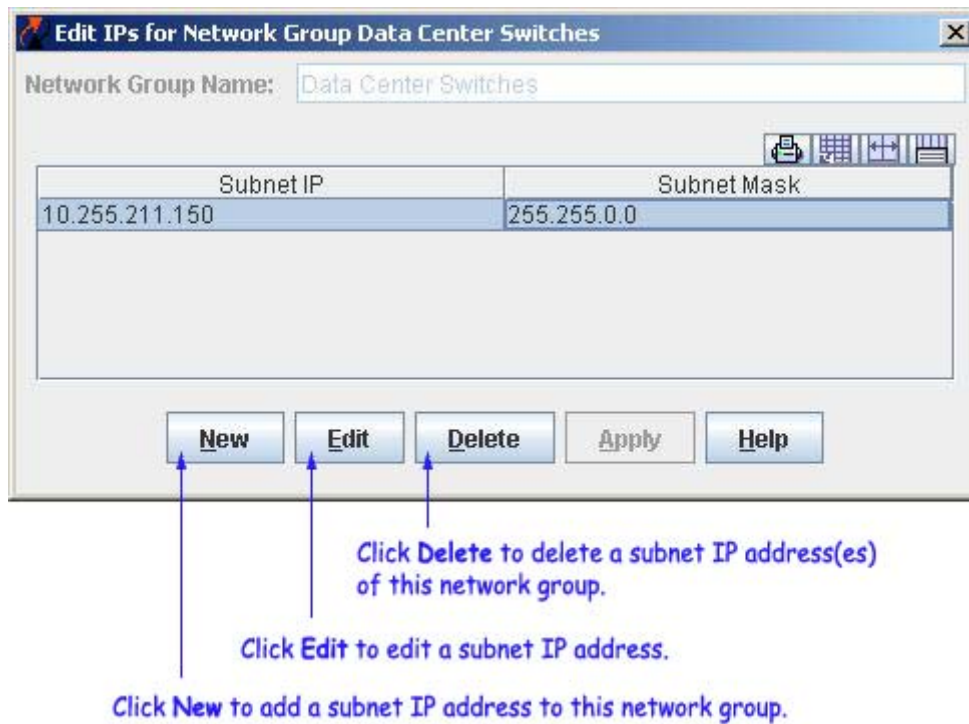


6. Click the **Apply** button to apply the changes to the LDAP repository. You can see the created network group in the **Network Group Definition** table.

## Editing a Network Group

Follow the steps below to edit a network group.

1. Select the desired group from the **Network Group Definition** table and click the **Edit** button. The **Edit IPs for Network Group** window appears (as shown below).



2. Make the necessary changes in the **Edit IPs for Network Group** window.

**Note:** A network group name cannot be changed. If you want to change a network group name, you have to delete and recreate the group.

3. The **Apply** button is enabled after the necessary changes are made. Click the **Apply** button to apply the changes to the server.

## Deleting a Network Group

Follow the steps below to delete a network group.

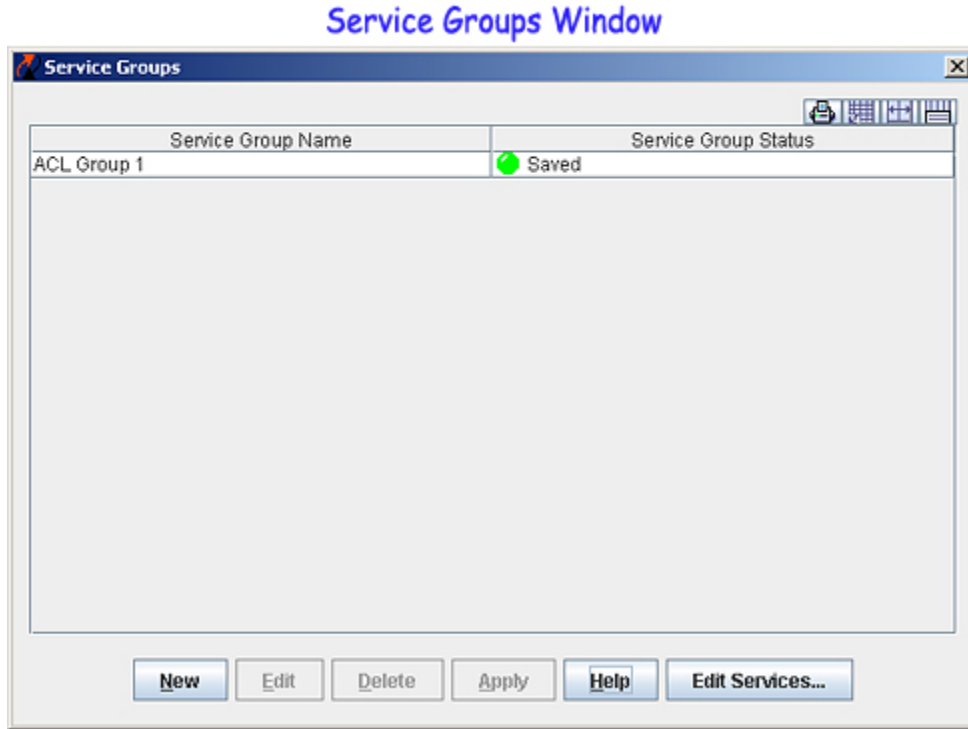
1. Select the desired group from the **Network Group Definition** table.
2. Click the **Delete** button. The network group status changes from "Saved" to "Unsaved Delete". Repeat steps 1 and 2 to delete additional networks.
3. Click the **Apply** button to apply the changes to the server.

**Note:** A network group that is in use by policy conditions cannot be deleted. To delete such network groups, de-select them from the policy conditions.

# The Services Groups Window

The Service Groups window displays the service group that is present in the LDAP repository. It helps you to do the following:

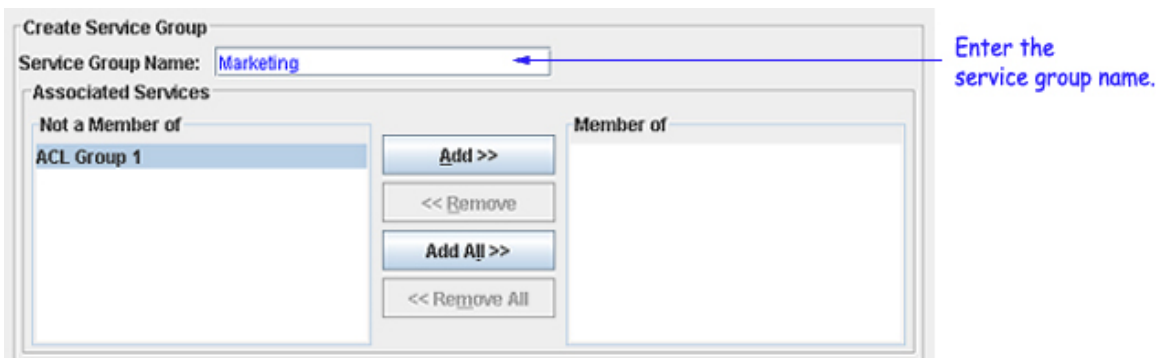
- Create a service group
- Edit a service group
- Delete a service group



## Creating a Service Group

Follow the steps below to create a service group.

1. Click the **New** button in the **Service Groups** window. The **Create Service Group** panel appears (as shown).



2. Enter the group name in the **Service Group Name** field and select the list of services. To select the services from the **Not a Member of** list and move them to the **Member of** list, use the **Add>>** , or the **Add All>>** button. If you want to create, edit, or delete a service, click the **Edit Services...** button.

**Note:** You can Shift-click to select multiple contiguous services, or you can Ctrl-click to select multiple noncontiguous services.

**Note:** A service group should have at least one service.

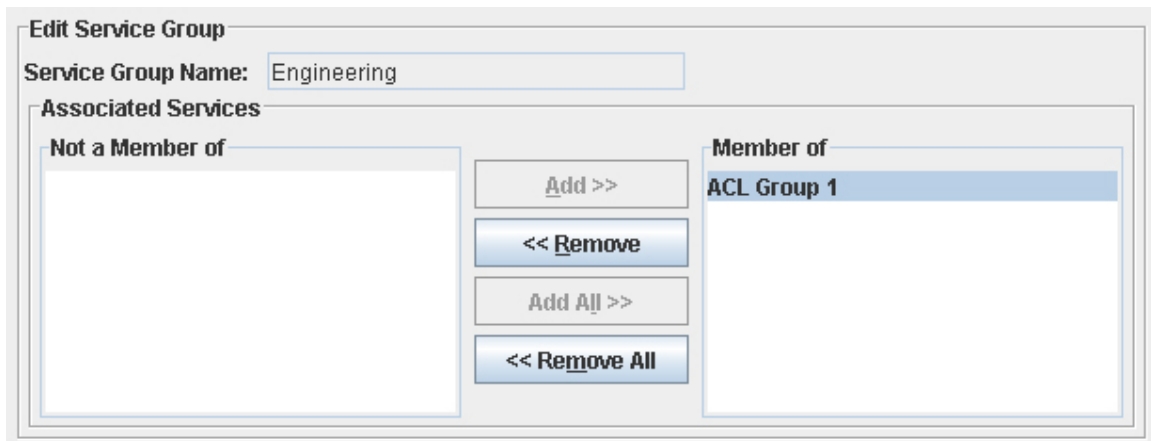
3. Click the **OK** button. The newly created service group appears in the **Service Groups** window.

4. Click the **Apply** button to apply the changes to the server.

## Editing a Service Group

Follow the steps below to edit a service group.

1. Select the desired group from the **Service Groups** window and click the **Edit** button. The **Edit Service Group** panel appears (shown below).



2. You can make the necessary changes in this panel. To add or remove services from **Not a Member of** list or **Member of list**, use the **Add>>** or **Add All>>**, **<<Remove** or **<<Remove All** buttons, respectively.

**Note:** A service group name cannot be changed. If you want to change the service group name, you have to delete and recreate the group.

3. After making the necessary changes, click the **OK** button. The status of the edited service group appears as "Unsaved" in the **Service Groups** window.

4. Click the **Apply** button to apply the changes to the server.

## Deleting a Service Group

Follow the steps below to delete a service group.

1. Select the desired service group from the **Service Groups** window.

2. Click the **Delete** button. The service group status changes from "Saved" to "Unsaved Delete". Repeat steps 1 and 2 to delete additional groups.

3. Click the **Apply** button to apply the changes to the server.

**Note:** A service group that is in use by policy conditions cannot be deleted. To delete such service groups, de-select them from the policy conditions.