

Digital Camera

DC1500

*Video &
Photo Software*



USER GUIDE

Digital Camera DC1500 User Guide

Table of Contents

Lincense Agreement	1
Electromagnetic Compatibility Notice	1
Caution	1
Attention	1
In This Package	2
System Requirements	2
Getting Started	2
• Nomenclature	2
Batteries Installation	3
Prepare to Upload the Photos	3
Installing Digital Camera CD-ROM Software	3
Running Digital Camera Suite	3
Uninstalling Digital Camera Suite	3
AVI Creator Program	4
Connecting Your Digital Camera to the PC	4
Taking Photos	5
Holding the Camera	5
• LCD panel information	5
Changing the Capture Mode	6
• Select the Low Resolution Mode	6
• Select the Continuous Mode	6
• Select the Self-timer Mode	6
• Clear all the photos	6
Auto Off	6
Low Battery	6
Getting Started with Digital Camera Suite	7
PhotoFantasy	7
• To Launch PhotoFantasy	7
• Quick Guide for Select Input Source from Digital Camera	7
• Main Screen	8
• Get Fantasy Screen	9
• Get Photo Screen	10
PhotoPrinter	11
• To Launch PhotoPrinter	11
• Quick Guide for Select Input Source from Digital Camera	11
• PhotoPrinter Main Screen	12
PhotoStudio	13
• Select Input Source from Digital Camera	13
• PhotoStudio Main Screen	14
AVI Creator	15
• To Launch AVI Creator	15
• Create your AVI Video File	15
Hints On Taking Quality Photos	16
Trouble Shooting	17
Product Specification	18
• Digital Camera	18
• Digital Camera Suite Software	18



Digital Camera DC1500 User Guide

License Agreement

ColorMOS is a trademark of VLSI Vision Ltd., UK. Microsoft, Windows, Windows 95, Windows 98, Windows NT, are registered trademark of Microsoft Corporation. Pentium is a registered trademark of Intel Corporation. The TWAIN driver and the AVI Creator is developed by VLSI Vision Ltd.,UK. The Photo Fantasy, Photo Printer and Photo Studio is licensed by Arcsoft, USA. All other product names mentioned here in are trademarks or registered trademarks of their respective owners.

Electromagnetic Compatibility Notice

This device complies with Part 15 of the FCC Rules. Operation is subject to the following two **conditions:** (1) This device may not cause harmful interference, and (2) This device must accept any interference received, including interference that may cause undesired operation.

Warning: Changes or modifications to this unit not expressly approved by the party responsible for compliance could void the user's authority to operate the equipment.

NOTE: This equipment has been tested and found to comply with the limits for a Class B digital device, pursuant to Part 15 of the FCC Rules. These limits are designed to provide reasonable protection against harmful interference in a residential installation. This equipment generates uses and can radiate radio frequency and, if not installed and used in accordance with the instructions, may cause harmful interference to radio communications.

However, there is no guarantee that interference will not occur in a particular installation. If this equipment does cause harmful interference to radio or television reception, which can be determined by turning the equipment off and on, the user is encouraged to try to correct the interference by one or more of the following measures:

- Reorient or relocate the receiving antenna.
- Increase the separation between the equipment and receiver.
- Connect the equipment into an outlet on a circuit different from that to which the receiver is needed.
- Consult the dealer or an experienced radio/TV technician for help.

Caution

In order to maintain compliance with FCC regulations, shielded cables must be used with this equipment. Operation with non-approved equipment or unshielded cables is likely to result in interference to radio and TV reception.

To comply with the limits for a class B digital device, pursuant to part 15 of the FCC rules, this device must only be installed on computer equipment certified to comply with the Class B limits. In addition, only the supplied power cables should be used with the product. Operation with non-certified computers, use of a cable other than that supplied, or modification of the device may result in interference to radio or television reception and could void the user's authority to operate this device.

Attention

Thank you for selecting **Digital Camera DC1500**. Please read the instructions carefully for a thorough understanding before taking pictures.

- This camera is not resistant to water and should not be used outdoors in snow or rain. If accidentally dropped in water, please quickly pour out the water. Let it to dry by sunlight or by air-blower.
- Protect it from excessive humidity. It will wet the lens and picture will be blurred.
- Do not attempt to disassemble the camera yourself. Always take it to an authorized service facility for repair.
- Remove the batteries if you do not expect to use the camera for 1 month or longer.
- To store the camera, wrap it in a clean, soft cloth and place in a cool, dry, dust-free place. Also it should not be placed in a very hot temperature condition or in direct sun light.
- The battery may explode or cause burns if disassembled, recharged, shorted, exposed to high temperature, or disposed of in fire.
- Take care on the lens. Use special cloth to clean it.
- Condensation is a problem when bringing cold equipment into a warm room. Try to put the camera in plastic bag so condensation forms on the outside of the bag.
- If nothing at all is displayed in the LCD panel, the battery may be inserted in opposite polarity.
- Opening the battery door will cause the loss of all stored photos. Make sure you have uploaded the photos to the PC before opening the battery door.

Digital Camera User Guide

In This Package

- DC1500 Digital Camera
- Digital Camera Software CD-ROM
- USB cable
- 9-pin (RS232) connecting cable
- User Guide (Inside CD-ROM)

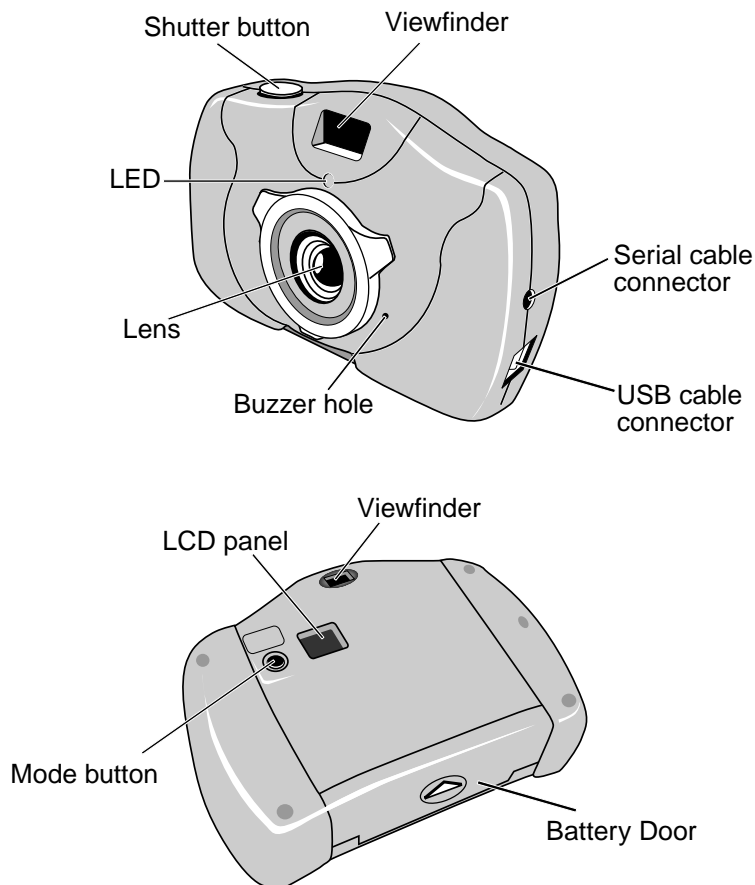
Note: The AAA batteries needed for the Digital Camera are NOT included. Use alkaline batteries are recommended.

System Requirements

- Multimedia PC Pentium 133 or higher
- Windows 95 / 98 / 98SE or NT for Serial port
- Windows 98 / 98SE for USB port
- 16MB RAM minimum
- 200MB hard disk space recommended
- CD-ROM drive
- Color monitor with 16 bit or above
- USB port or Serial (Com) port for connection
- Color Inkjet or Laser Printer to output photos (optional)

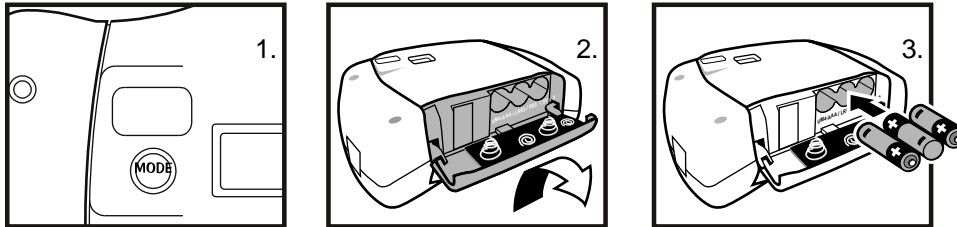
Getting Started

- Nomenclature



Batteries Installation

1. Open the battery door on the bottom of your camera.
2. Install 3 AAA batteries into Digital Camera, as shown.
3. Make sure to orient the positive (+) and negative (-) ends of the batteries exactly as shown.
4. Replace the door.



CAUTION – To avoid battery leakage:

- Non-rechargeable batteries are not to be recharged.
- Be sure to insert the battery with the correct polarities according to battery manufacturer's instructions.
- Remove the battery from product before extended storage.
- Always remove an old or dead battery from the product.
- Do not short-circuit the supply terminals.
- Check that the contact surfaces are clean and bright before installing the battery.

Prepare to Upload the Photos

Installing Digital Camera CD-ROM Software

- Insert the CD-ROM disc into your drive.
- The installation will start automatically.
- Follow the installation instructions.
- You can choose any of the three Arcsoft software – PhotoFantasy, PhotoStudio & Photo Printer.
- After installation is complete, click '**Finish**' button to install the Digital Camera driver.
- The system must be restarted to complete the installation.

Running Digital Camera Suite

- Click '**Start**' from the Windows Taskbar, then search through '**Programs**/'**Digital Camera Suite**.
- Choose any of the three Arcsoft software to run it.

Uninstalling Digital Camera Suite

- Click '**Start**' from the Windows Taskbar, then search through '**Programs**/'**Digital Camera Suite**.
- Click the Uninstall icon and follow the on-screen prompts.

Or you can uninstall the software with the following steps:

- Click '**Start**' from the Windows Taskbar, then click on '**Setting**'.
- Click on '**Control Panel**'.
- Double click on '**Add/Remove Programs**'.
- Scroll down and highlight '**Digital Camera Suite**'.
- Click on '**Add/Remove Programs**' and the '**OK**'.

Uninstall the camera driver from the hard drive:

- Goto C:\Windows\System. Delete the files with 'stv' pre-fix.
- Goto C:\Windows\System32\Drivers. Delete the file stv680.sys.

AVI Creator Program

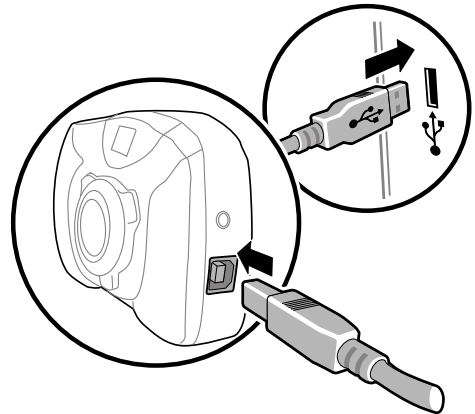
- It is a program to create a video file from the camera.
- **AVICreator** will install in your hard disk automatically after Arcsoft's software install completed.
- To launch **AVICreator**, click '**Start**' from the Windows Taskbar, then search through '**Programs**'/**Digital Camera Suite/ AVICreator**'.

Connecting Your Digital Camera to the PC

- **USB**

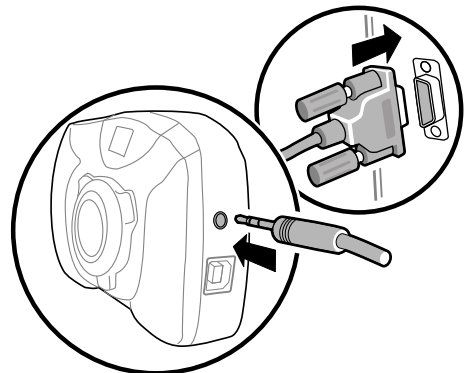
If your computer has a USB port, insert the USB plug of the camera cable into the USB port on your computer.

If you success to connect the camera with the computer, the LED will light up and you'll hear a beep, beep sound.



- **9-pin (RS232)**

If your computer has a 9-pin serial port only, insert the 9-pin of the camera cable into the serial port on your computer.



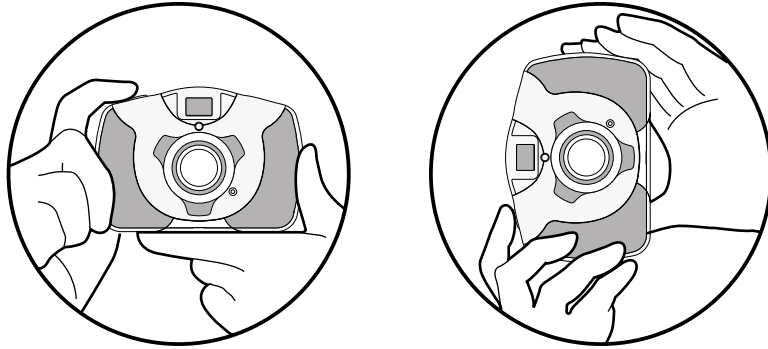
Digital Camera DC1500 User Guide



Taking Photos

Once your camera is connected to your computer and your Digital Camera Suite is installed, you're ready to learn about taking photos.

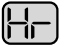
Holding the Camera


Hold the camera as shown below when taking photos.





- Press the mode button.
- The LED will light up, a beep sound will play and the LCD panel will turn on indicating the camera is on.
- The LCD will show the capture mode  first then skip to the frame counter .


The information shown below appears on the LCD panel

 : High Resolution Mode (CIF)

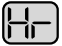
 : Frame counter - Max. number of available shots

 : Continuous Mode - taking photos continuously

 : Self-timer - 10 seconds

 : Clear all the photos

 : Low Resolution Mode (QCIF)

Note: Default setting of the camera is on  High Resolution Mode.


- Look through the viewfinder. The focus is set to work best when taking a photo of a subject that is minimum 2 feet away from the camera.
- Press the Shutter button, you'll hear a beep sound and the frame counter will count down 1 frame which indicates an image has been taken.

TIP: It is recommended that you take a few test shots at different distances so that you can understand how the photos are actually captured by the camera.

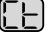
Changing the Capture Mode

- **Select the Low Resolution Mode**

- Press Mode button to select 
- Press Shutter button to change it then the frame counter will change to **80**.

Note: If you want to change the resolution, it is needed to clear all photos by the function .


- **Select the Continuous Mode**

- Press Mode button until  is shown.
- **Hold** down the Shutter button for taking photos continuously until the frame counter countdown to **00**.


Note: The time for the AVI video is 8 seconds for Low Resolution Mode and 2 seconds for High Resolution Mode.

TIP: It is highly recommended that you should clear all the photos before you taking photos continuously.

- **Select the Self-timer Mode**

- To take photos with the self-timer, press Mode button until  is shown.
- Press the Shutter button to start count down.
- Beep sound is heard until the photo is taken after 10 seconds.

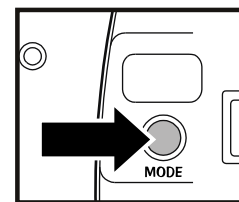
- **Clear all the photos**

- Press Mode button until  is shown.
- Press Shutter button then the LCD will start to flash.
- Press Shutter button again and you'll hear a double beep sound, all the photos will be clear.

Remark: It will return to frame counter if the mode is not selected within 5 seconds.

Auto Off

It will Auto Off after 30 seconds without pressing any button. Press the '**Mode**' button to power on it.



Low Battery

If at anytime the LCD on the frame counter information begins to flash, it indicates low battery. Upload your photos to the computer as fast as possible. You are recommended to change new batteries immediately.

Getting Started with Digital Camera Suite

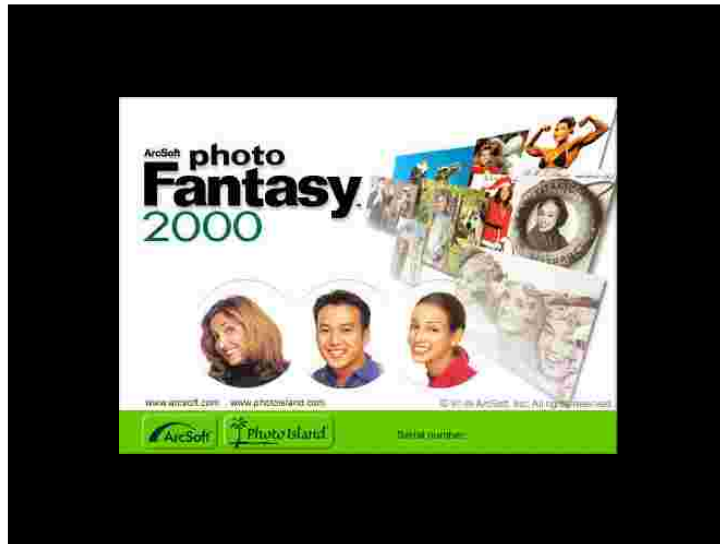
PhotoFantasy

This is a funny role play program. In just a few seconds, you can become a supermodel, a pro athlete, a caveman or even Santa Claus. Let's go into the program now.

- **To Launch PhotoFantasy**

1. Click '**Start**' from the Windows Taskbar, then search through '**Programs**'/**Digital Camera Suite**.
2. Choose PhotoFantasy to run it.

- Opening Screen



- **Quick Guide for Select Input Source from Digital Camera**

1. Click '**Get Fantasy**' button in the top left corner of the Main Screen.
2. Get Fantasy Screen appears. You can select the fantasy background from **Digital Camera** or software CD-ROM.
3. Get photo from **Digital Camera**, click '**Scan**' button.
4. The Input Source dialog box appears, highlight '**Digital Camera**' then click '**Select**' button.
5. Choose your photo and click '**Capture**' button.
6. After you prepared the fantasy background in the Main Screen, click '**Get Photo**' button.
7. Get Photo Screen appears. Click '**Acquire**' button to upload photo from **Digital Camera**.
8. The Input Source dialog box appears, highlight '**Digital Camera**' then click '**Select**' button.
9. Choose your photo and click '**Capture**' button.

(For further information, please read the following description.)

Digital Camera DC1500 User Guide

- **Main Screen**

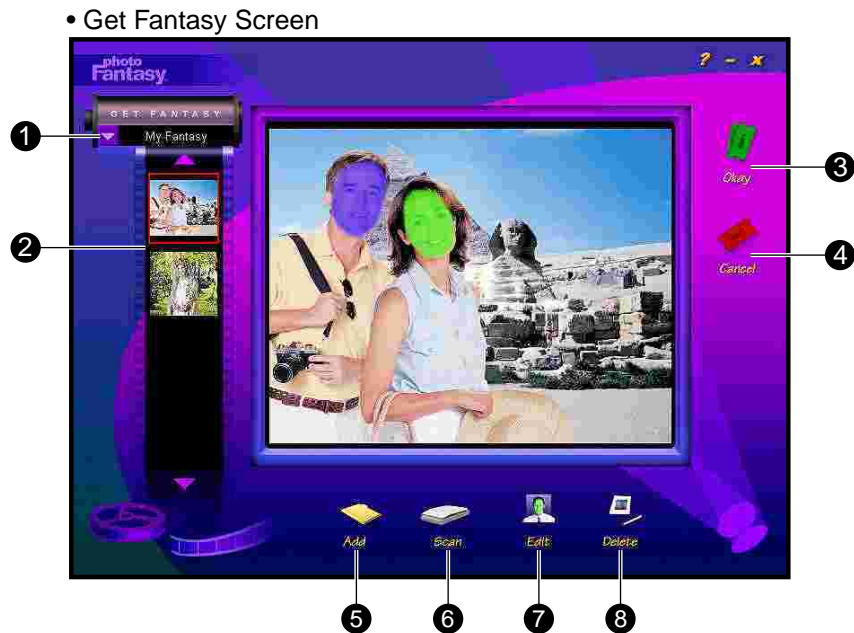
The Main Screen contains controls that allow you to access the other program screens, as well as to make final adjustments and enhancements to your photo fantasy.



- ➊ **Get Fantasy Button** : opens the Get Fantasy Screen, so you can select the fantasy background for your photo fantasy. From this screen, you can also create your own fantasies.
- ➋ **Get Photo Button 1,2 or 3** : each of these buttons corresponds to a particular mask/ photo in a fantasy background.
- ➌ **Save As Button** : opens the standard Windows Save As dialog box so you can save your finished photo fantasy under a specific path, file name and file format.
- ➍ **Print Button** : opens the standard Windows Print Setup dialog box so you can select your printer settings and begin printing your finished photo fantasy.
- ➎ **Send Button** : automatically launches your e-mail program so you can e-mail your finished photo fantasy.
- ➏ **Start Over Button** : revert the main display area.
- ➐ **Flip** : flips your photo horizontally so it faces the opposite direction.
- ➑ **Move** : moves the photo up, down, left and right.
- ➒ **Resize** : makes the photo larger or smaller.
- ➓ **Rotate** : turns your photo in a clockwise or counter-clockwise direction.
- ➔ **Add Text** : opens a text box so you can add text to your photo fantasy.
- ➕ **Match Color** : automatically adjusts the skin tone in your photo to better match the skin tone in your selected fantasy background. To revert to the original color, click again.
- ➖ **Brightness** : slide the bar to the right or left to adjust the brightness in your photo.
Contrast : slide the bar to the right or left to adjust the contrast in your photo.
Saturation : slide the bar to the right or left to adjust the saturation in your photo.
- ➗ **Zoom In** : close-up look at the photo in your photo.
Zoom Out : returns the photo fantasy to the original view.

Get Fantasy Screen

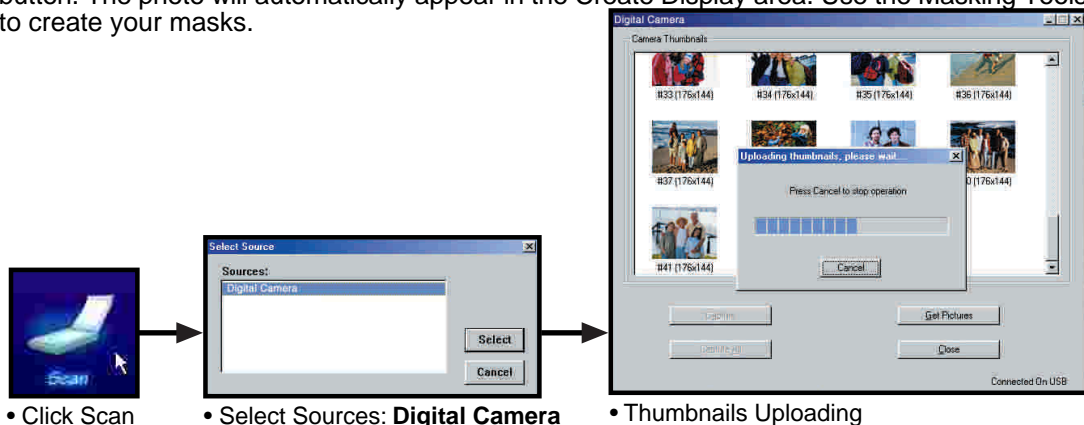
Clicking the Get Fantasy Button takes you to Get Fantasy Screen. Here you can select the fantasy background from software CD and create your own fantasy background.



- 1 **Fantasy Category Menu** : provides a list of available fantasy categories. This list includes categories contained on your CD-ROM and a 'My Fantasy' category for adding your own fantasy backgrounds.

TIP: Remember to insert your Software CD in your CD-ROM drive to access the full selection of fantasy backgrounds.

- 2 **Fantasy Slides** : small thumbnail images of your fantasy background.
- 3 **Okay Button** : places your selected photo in the Main Screen.
- 4 **Cancel Button** : without placing the selected photo in the Main Screen.
- 5 **Add Button** : lets you create a fantasy background from one of your images. Click the 'Add' button, the Open dialog box that appears, locate the image you want to use and click 'Open'.
- 6 **Scan Button** : lets you create a fantasy background from Acquired image or a scanner. Click the 'Scan' button, the Select Source dialog box that appears, choose 'Digital Camera' and click 'Select'. The photos thumbnails will be uploaded. Choose the photo and click 'Capture' button. The photo will automatically appear in the Create Display area. Use the Masking Tools to create your masks.

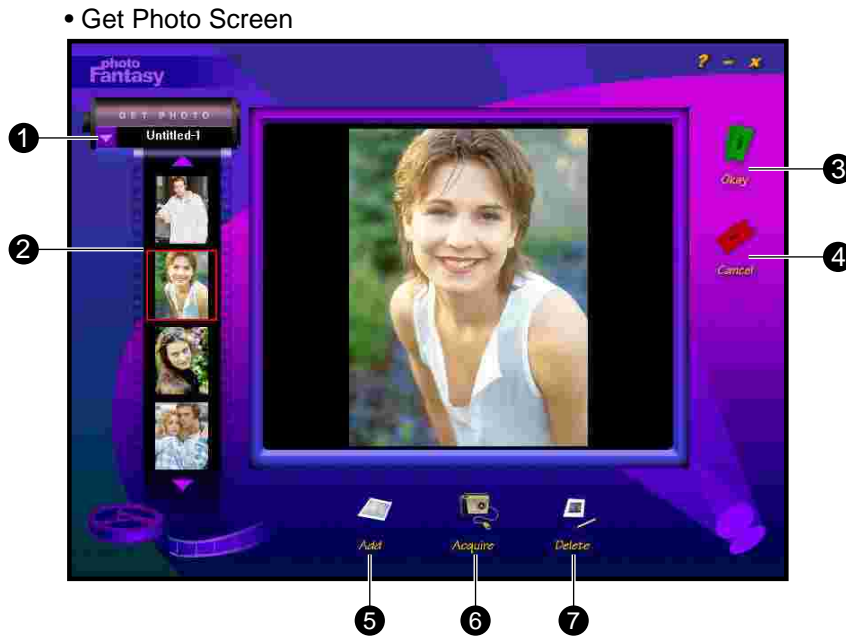


- 7 **Edit Button** : opens the Create Fantasy Background Screen.
- 8 **Delete Button** : deletes the selected fantasy slide(s) from the 'My Fantasy' category.

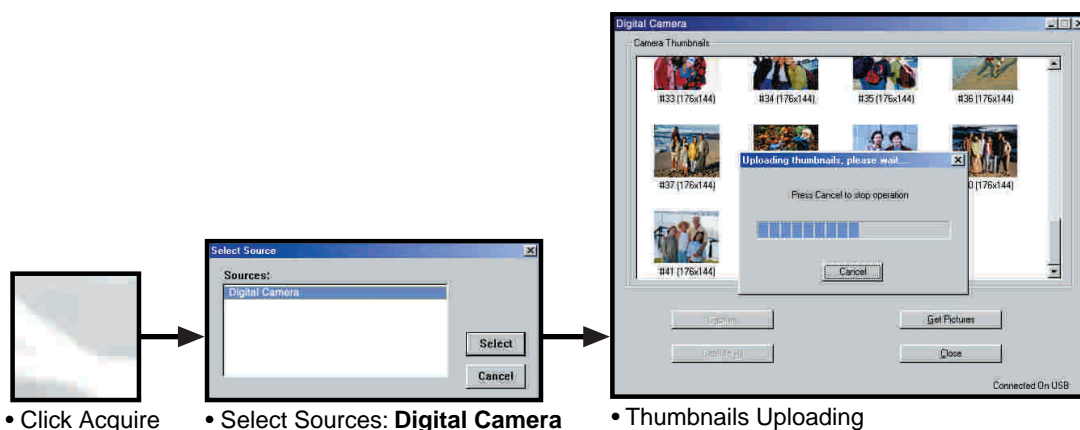
Digital Camera DC1500 User Guide

Get Photo Screen

After you create the fantasy background, clicking the 'Get Photo Button 1,2 or 3' in the Main Screen takes you to the Get Photo Screen. You can choose the photos for your photo fantasy and create new category of photos.



- 1 Photo Category Menu** : provides a list of available fantasy categories. You can make your own category of photos, choose the 'New' option from the list. The default name will be 'Untitled-#'. Highlight the title and rename the category. To add photos to the current category, click the Add or Acquire button.
- 2 Photo Slides** : small thumbnail image of your actual photo files.
- 3 Okay Button** : places your selected photo in the specified mask (1,2 or 3) in the Main Screen.
- 4 Cancel Button** : without placing the selected photo in the Main Screen.
- 5 Add Button** : lets you create a fantasy background from one of your images. Click the 'Add' button, the Open dialog box that appears, locate the image you want to use and click 'Open'.
- 6 Acquire Button** : you can Acquired image into current category. Click the 'Acquire' button, the Select Source dialog box that appears, choose 'Digital Camera' and click 'Select'. The photos thumbnails will be uploaded. Choose the photo and click 'Capture' button. Then click 'Close'. The photo will automatically appear in the Main Screen.



- 7 Delete Button** : deletes the selected photo slide(s) from the current category.

Digital Camera DC1500 User Guide

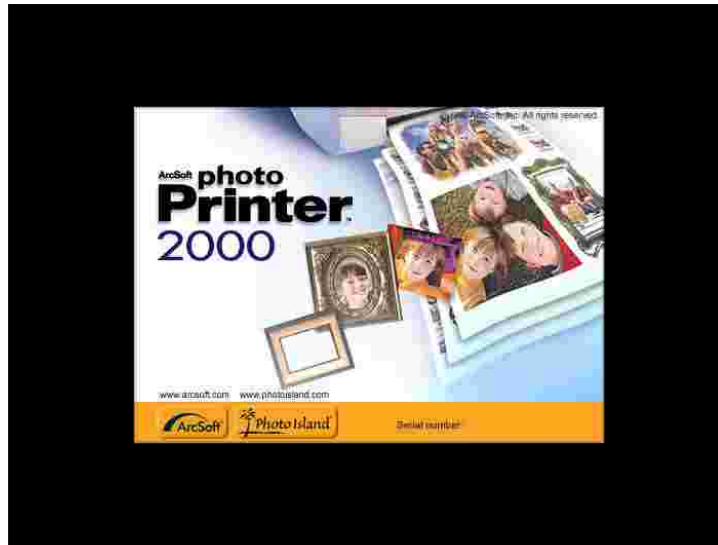
PhotoPrinter

This is a simple program for you to print the picture in several steps. Go into the program and upload the pictures from the camera. Select a feature to print the photo to your favor.

- **To Launch PhotoPrinter**

1. Click '**Start**' from the Windows Taskbar, then search through '**Programs**/'**Digital Camera Suite**.
2. Choose PhotoPrinter to run it.

- Opening Screen



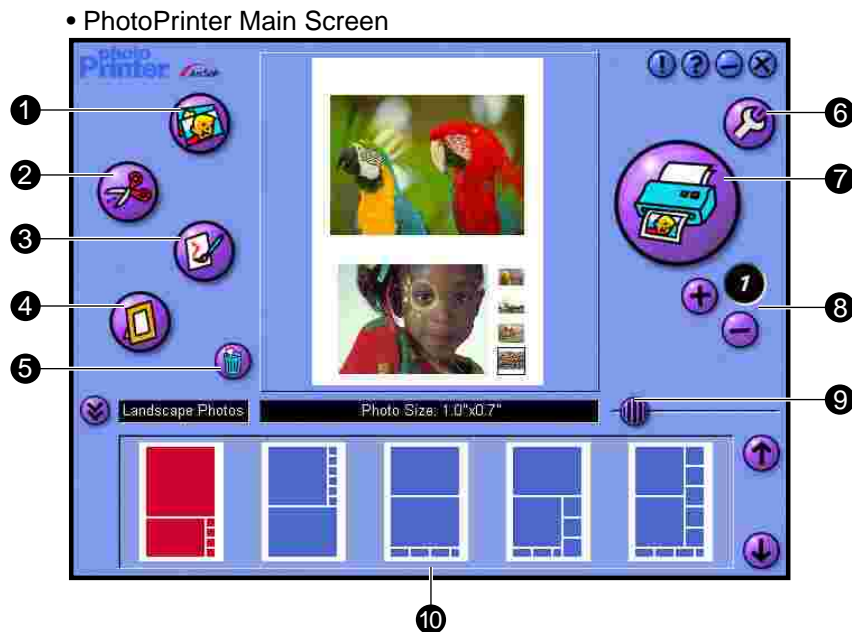
- **Quick Guide for Select Input Source from Digital Camera**


1. Click '**Get Photos**' button in the Main Preview Screen.
2. Photo Album Screen appears. Click '**Acquire**' button to upload photo from .
3. The Input Source dialog box appears, highlight '**Digital Camera**' then click '**Select**' button.
4. Choose your photo and click '**Capture**' button.
5. Click '**Close**'.

(For further information, please read the following description.)

Digital Camera DC1500 User Guide

- **PhotoPrinter Main Screen**
The PhotoPrinter Main Screen contains buttons that let you quickly access the Photo Album, Crop, Edit and Frame Screens.



- ❶ **Get Photos Button** : this button takes you to the Photo Album Screen where you can select photo(s) for printing. Here you will find buttons that make it easy to create new photo albums, delete thumbnails and acquire photos from **Digital Camera**.
 - Click  Acquire button.
 - The Select Source dialog box that appears, choose '**Digital Camera**' and click '**Select**'.
 - The photos thumbnails will upload.
 - Choose the photo and click '**Capture**' button.
 - Click '**Close**'.
- ❷ **Crop Photo Button** : this button brings your selected photo to the Crop Screen. In the Crop Screen, you can trim your photo, keeping just the portion you want to print. You can choose between Landscape and Portrait crop orientations. Adjust the position and scale of the crop selection box with your cursor.
- ❸ **Edit Photo Button** : this button brings your selected photo to the Edit Screen. In the Edit Screen, you can enhance your photo instantly. You can choose between Enhancements and Effects.
- ❹ **Frame Photo Button** : this button brings your selected photo to the Frame Screen. You can place it in a variety of artistic frames, borders, edges and calendar background.
- ❺ **Clear Page Button** : removes all photos from the Page Preview Window.
- ❻ **Printer Setup Button** : gives you standard Windows printing options - printer type, paper size and layout orientation.
- ❼ **Print Button** : begins the print job.
- ❽ **Copies (+/-)** : lets you set the number of copies.
- ❾ **Size Adjuster** : adjusting the size of the white space between photos along with the photo size.
- ❿ **Template Menu** : allows you to choose from a variety of template categories..

Digital Camera User Guide

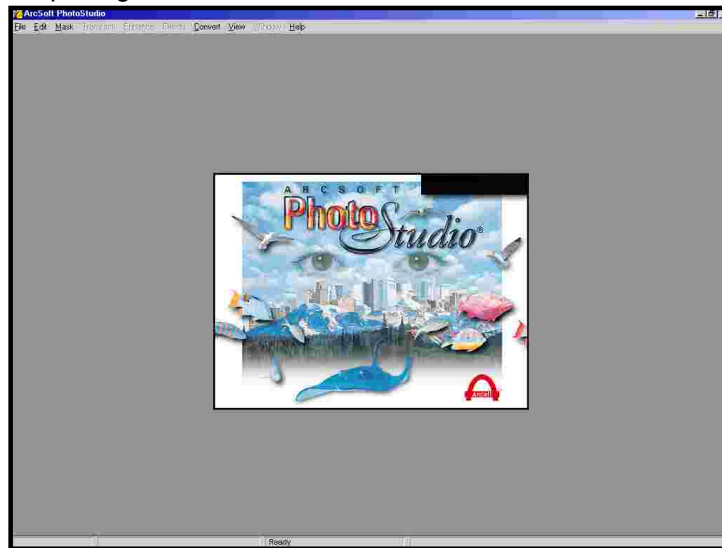
PhotoStudio

PhotoStudio is a powerful, easy-to-use, digital image editing program for PC's running. It enables full-color images to be acquired, managed, enhanced, retouched, and output for publications, presentation, and the internet.

- **To Launch PhotoStudio**

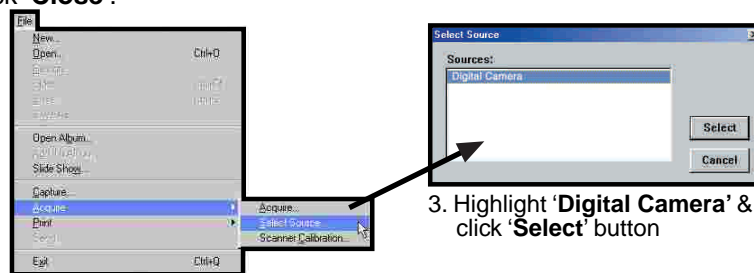
1. Click '**Start**' from the Windows Taskbar, then search through '**Programs**/'**Digital Camera Suite**.
2. Choose PhotoStudio to run it.

- **Opening Screen**



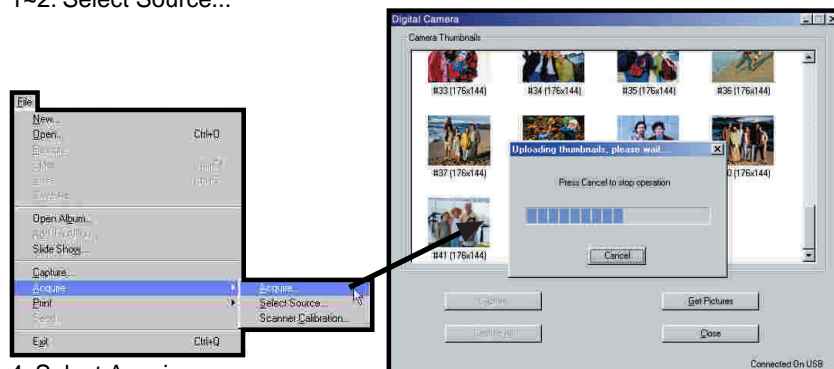
- **Select Input Source from Digital Camera**

1. Click '**File**' on the pull down menu.
2. Choose '**Acquire**' and click '**select Source...**'.
3. The Input Source dialog box appears, highlight '**Digital Camera**' then click '**Select**' button.
4. Choose '**Acquire**' again and select **Acquire...**
5. The photos thumbnails will upload.
6. Select the photos and click '**Capture**' button.
7. Click '**Close**'.



3. Highlight '**Digital Camera**' & click '**Select**' button

1~2. Select Source...



4. Select Acquire...

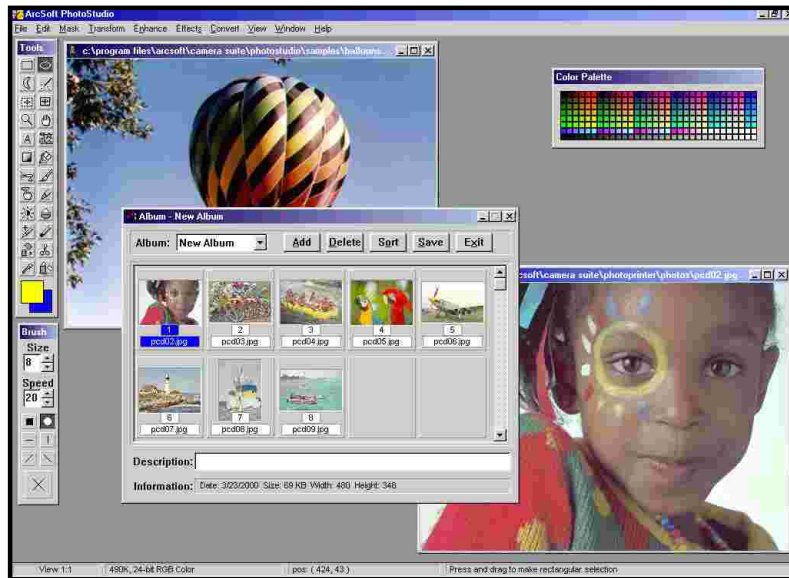
5. Thumbnails Uploading

Digital Camera DC1500 User Guide

- **PhotoStudio Main Screen**

The PhotoStudio Main Screen contains commonly used commands and options grouped under different titles: *File*, *Edit*, *Mask*, *Transform*, *Enhance*, *Effects*, *Convert*, *View Window* and *Help*. Each menu group title has its own pull-down menu where specific commands and options are found. Some items in the pull-down menu may also contain a submenu, which, once clicked, will open a dialog box on the desktop.

- **PhotoStudio Main Screen**



- **File** : The File menu contains a number of commands to manage and manipulate image file.
- **Edit** : The Edit menu contains commands for editing images. Selections can be controlled by cutting them out, copying them to or pasting them from the clipboard, or by filling them with other colors.
- **Mask** : Add a mask for your photo.
- **Transform**: The Transform menu contains commands for transforming images. You can *Flip*, *Mirror*, *Rotate*, and *Resize* your photo under this command group.
- **Enhance** : The Enhance menu provides a full line of advanced, easy-to-use features for enhancing images. Commands such as *Brightness and Contrast*, *Hue and Saturation*, and *Tone Adjustment* are the primary tools for color correction. A variety of smoothing, sharpening, and special filters are provided for image enhancement.
- **Effect** : The Effect menu offers an assortment of special effects that can be applied directly to images.
- **Convert** : The Convert menu provides you commands to change the data type of an image. It also provides functions which allow you to split the various channels that make up an image into separate Grayscale image documents, and combine different channels to form a single RGB True color image.
- **View** : The commands in the View menu are used to manage the PhotoStudio working space and image display, and show information about the active image.
- **Window** : The commands in the Windows menu is used to manage the image windows in the PhotoStudio.

[For further information, please see PhotoStudio's Help Menu.]

Digital Camera DC1500 User Guide

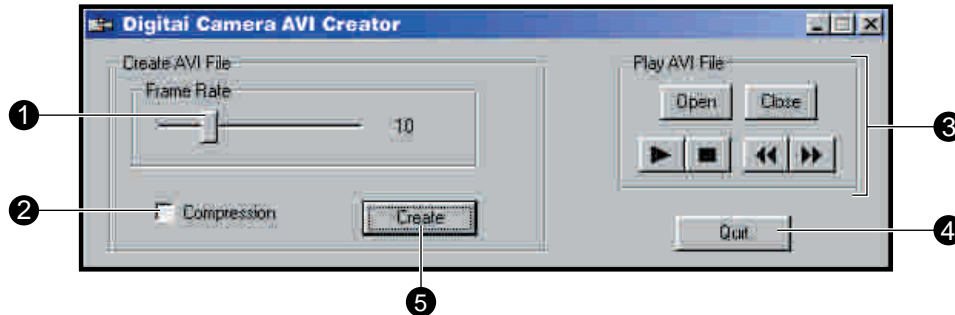
AVI Creator

AVI Creator can transfer your **CoolCam™** photos to AVI (Video) format. The total time is 8 seconds for QCIF (Low Resolution) photo and 2 seconds for CIF (High Resolution) photo.

• To Launch AVI Creator

1. Click '**Start**' from the Windows Taskbar, then search through '**Programs**/'**Digital Camera Suite/ AVICreator**'.

• AVI Creator Main Screen



- 1 **Frame Rate Slide Button** : slide this button to change the playback frame rate of the AVI file. '10' represents normal speed. Larger than '10' means faster playback speed. Less than '10' means slower than normal. (Default is '10')
- 2 **Compression Check Box** : click this check box to reduce the size of your AVI file. It does not affect the quality of the video.
- 3 **File Control Panel** : Click this button to open the AVI file. The Open dialog box will appear, select your file and click '**Open**' button.
 Close the opening AVI file.
 Play button - click this button to play the AVI file.
 Stop button - click this button to stop playing the AVI file.
 Rewind button
 Fast Forward button
- 4 **Quit Button** : quit the AVICreator program.
- 5 **Create Button** : create your **Digital Camera** photos to AVI file.

• Create your AVI Video File

- Recommend: Select . It will display '80'. Select . Aim to the object. Press and hold the '**Shutter**' button until all photos are taken.
- Make sure your **Digital Camera** is connected to PC.
- Launch the **AVICreator** program.
- Set your Frame Rate, Compression.
- Click '**Create**' button. A dialog box will appear.
- Input a file name and click '**Open**' button.
- It will save the photos as AVI file in the hard disk of your PC.



• File creating...

- Use the File Control Panel to playback your AVI video file.



• Playing your file

Hints On Taking Quality Photos

- If you want to take a photo of your friend, try to take at least half the body size. You will not get her eyes clearly if you take the whole body.
- Take care of the background light intensity. It will affect the exposure of the main object. The camera can calculate the total light intensity of the picture to fine adjust the exposure. If the background is too dark, the object will be too bright. If the background is too bright, the object will then be too dark.
- Even you take photos outdoor, you should not let the object under the shadow. The object is not shined by the sun means for staying in the dark. The result is unclear object and bright background.
- Hold the camera with both hands. Use the first finger of your right hand to press the shutter. Do not stand on unstable position. Any movement on the camera will cause fuzzy photos.
- Do not cover the lens with your fingers. It will obstruct the object. If greasy is attached on the lens, clean it with a dry and soft cloth.
- It will affect the color if the light source is the fluorescent lamp or light bulb. Green color will be increased under fluorescent lamps. Yellow color will be more under light bulbs. You can recover the original color by using the photo editing software.
- Keep the view finder horizontal to get correct view of image. Try to kneel down if possible.
- Take the photo with enough light intensity. You need to take photos in your office or outside with sunlight. It is not recommended to use it indoor at night.
- Do not point to a strong light source such as the Sun. The background will be too dark and you see nothing in the photo.
- When you take a photo in a brighter environment and then take another photo in a darker environment, it will not get correct exposure. Try to wait several seconds before pressing the shutter.

Trouble Shooting

- If you disconnect the USB cable during operation, you need to close the Acquire dialog panel and then re-open it again for the PC to recognize the unit.
- The file size of a photo (CIF size, save as BMP file) is 298KB. For 20 photos, the file size will be 5944KB (equal to the AVI file size). If the compression is set to on in the AVICreator, the file size will be reduced to 1354KB but the video quality is not so good.
- The camera is set to your country's AC mains frequency. If you use it in another country with different frequency (either 50 or 60Hz), you should not take the photo under the lamp. Black strips of line will be seen in the picture due to incorrect mains frequency. It is no problem under the sunlight.
- The camera will turn off automatically after 30 seconds without pressing the buttons. This can save the battery life. You need not to take off the battery when it is not in use. Just take off it if the pictures are uploaded or you will not use it for a long time, say 2 days or more.
- When the LCD is blinking, it means the battery power is low. You need to change batteries. You can take up to all 20 photos even it is blinking. Then upload the photos to the PC and change the empty batteries.
- It is not recommended to use re-chargeable batteries. Because the output voltage is lower than the alkaline battery. It will get battery low easily.
- If the PC cannot recognize the camera when you run the Photo program, you need to disconnect and re-connect the USB cord to the camera.
- You will hear a 'Gi' sound and the Digital Camera will not function to take a photo if the environment is too dark. Try to use spot light or turn on the fluorescent lamp to get more light.
- After power on, it will take about 2 seconds to initialize the internal set-up. Then you will see the number of pictures remained. So it cannot take the picture immediately after power on or awake from sleep mode.
- You would better to adjust the gamma of your monitor through some programs to fine tune the color in order to get a vivid photo on the monitor. Actually, the Photo Studio has the gamma adjustment to the photo.
- This is not a disposable camera. You can use it whenever the power is ready and the memory is not full.
- It is better to use the USB port for upload. The power is supplied by the USB port so the battery power can be saved and the upload speed is 20 times faster. Even you connect both ports, it will select the USB port.
- It is recommended to use alkaline batteries. This will get longer play time. And the performance is better than normal batteries.
- When old batteries are used, it may happen lock up. You cannot take a photo and the counter is always '20' or '80'. Change to new batteries if it cannot recover this problem by open and cover the battery door.

Product Specifications

- **Digital Camera**

1.	Resolution	:	352x288 pixels (CIF), 176x144 pixels (QCIF)
2.	Lens	:	Plastic, two elements, F 2.0, 35mm (Equiv.)
3.	Memory	:	2MB SDRAM
4.	Number of Pictures	:	20 for CIF, 80 for QCIF
5.	View Finder	:	Yes.
6.	LCD	:	2 digits 7-segment display
7.	Buzzer	:	Yes. Beep sound indicates working mode
8.	LED	:	Yes. Green LED indicates power on
9.	Power Switch	:	No
10.	Picture Retention	:	Yes. By main power batteries.
11.	Battery Power	:	3A battery x 3 pcs (4.5V)
12.	Auto-Off	:	Yes. When no key is pressed for 30 seconds
13.	Upload speed	:	USB ~ approximate 0.4 second per CIF photo RS232 ~ approximate 10 seconds per CIF photo

- **Digital Camera Suite Software**

1.	AVICreator	:	AVI video playback, ~approximate 8 seconds for QCIF.
2.	PhotoPrinter	:	Print the photo in simple steps
3.	PhotoFantasy	:	Role play program
4.	PhotoStudio	:	Photo editing program
5.	USB driver	:	For Win98 / 98SE/2000
6.	RS232 driver	:	For Win95 / 98 / 98SE / NT/2000

The user manual can be printed out by Arcobat Reader 4.0. This file is stored in the CD-ROM provided. The filename is areng40.exe.

Double Click on it and it will start installation. After installation, double click on the manual.pdf file. It will open the Arcobat Reader and then the user manual. You can print it out by selecting File-Print.

Important files inside the CD-ROM:

In the main directory D:\

- manual.pdf : user manual
- AVICREATOR.EXE, stv680cp.dll : AVI Creator files
- Ar40eng.exe : Arcobat Reader 4.0. For reading pdf files.

In the Drivers folder:D:\Drivers\

dc 1102xv.exe : PC driver. Install USB/RS232 camera driver.

Responsible Party in USA

Legal Company Name: Argus Industries, Inc.
Address: 1100 Howard street
Elk Grove Village, IL 60007
www.arguscamera.com
E-Mail : argus@arguscamera.com

* Specification are subject to change without prior notice *