

FCC Information

This telephone system equipment has been tested and found to comply with the limits for Class B digital device, pursuant to Part 15 of the FCC Rules. Operation is subject to the following two conditions:

- (1) This device may not cause harmful interference, and
- (2) This device must accept any interference received, including interference that may cause undesired operation.

These limits are designed to provide reasonable protection against harmful interference in a residential installation. Some cordless telephones operate at frequencies that may cause interference to nearby TVs and VCRs. To minimize or prevent such interference, the system base should NOT be placed near or on top of a TV or VCR; and, if interference is experienced, moving the base farther away from the TV or VCR will often reduce or eliminate the interference.

However, there is no guarantee that interference will not occur in a particular installation. If this telephone system does cause harmful interference to radio or television reception, which can be determined by turning the system off and on, the user is encouraged to try to correct the interference by one or more of the following measures:

- (1) Increase the separation between the base station and receiver;
- (2) Connect the base station to an outlet on a circuit different from that to which the receiver is connected;
- (3) Consult the dealer or an experienced radio TV technician for help.

Notice to Hearing Aid Wearers: This phone system is compatible with inductively coupled hearing aids.

Power Outage: In the event of a power outage, your cordless telephone will not operate. The cordless telephone requires electricity for operation. You should have a telephone that does not require electricity available for use during power outages.


Safety Precautions: Before using your telephone equipment, basic safety instructions should always be followed to reduce the risk of fire, electric shock, and injury to persons. Contains Nickel Cadmium Battery. Battery must be recycled or disposed of properly. Do not dispose in municipal waste. Only use type AA Nickel-Cadmium (NiCd) or type AA Nickel-Metal Hydride (NiMH) rechargeable batteries in the cordless handset. Do not use Alkaline or lithium batteries in the cordless handset or charger. Do not mix old and new batteries. Use the same rechargeable battery type. Do not combine rechargeable battery types. Exercise care in handling batteries in order not to short the batteries with conducting materials such as rings, bracelets, and keys. The batteries or conduction materials may overheat and cause burns or fire. Do not dispose batteries in fire. For additional instructions, see the user's manual included with your Gigaset system.

The installation of the base unit should allow at least 8-inches between the base and persons to be in compliance with FCC RF exposure guidelines.

Warranty: The product warranty is contained in the user's manual. Please refer to the manual for complete product warranty details.

Information subject to change as Siemens reserves the right, without notice, to make changes in equipment design or components. Siemens is a registered trademark and Gigaset is a trademark of Siemens AG. Made in Germany. © Siemens Information and Communication Mobile LLC 2001. Copyright. All rights reserved.

PB4200HSG

 Customer Care: 1-888-777-0211
Or visit our Website: www.icm.siemens.com
Visite nuestro sitio Web para obtener instrucciones en español.



**DO NOT RETURN
THIS PRODUCT TO THE STORE!**

Please read the following important information.

For Siemens Customer Care Service, product operation information, or for problem resolution, call toll-free

1-888-777-0211

7 a.m. to 10 p.m. Central Standard Time EVERY DAY

SIEMENS

www.icm.siemens.com

Visite nuestro sitio Web para obtener instrucciones en español.



SIEMENS Gigaset 4200 Quick Start Guide

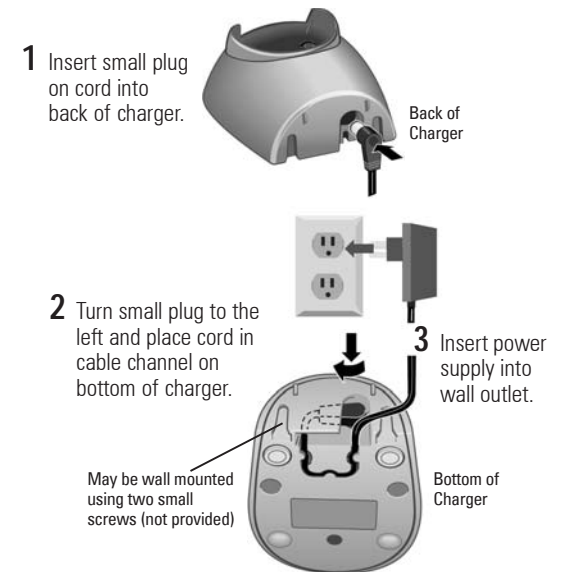
2.4 GHz
digital
technology

This guide will help you get started using your Gigaset handset. For additional information related to your model, including GigaVoice™ features, please refer to the User Manual.


Connecting the Charger

A charger is included with additional handsets. This charger does not require connection to a telephone line for operation. Use only the power supply (110 VAC/60 Hz with cord) included with the charger. (Do not use other power supplies.)

Before using your charger, follow these steps:



IMPORTANT: Do not use a wall outlet controlled by a wall switch.





 Customer Care: 1-888-777-0211
Or visit our Website: www.icm.siemens.com
Visite nuestro sitio Web para obtener instrucciones en español.

Gigaset 4200 Handset

The handset included with the system is automatically registered with the base station. Up to a total of four handsets (dependent on system) may be added to any Gigaset 4010, 4015, 4210, or 4215 base.

Handset Setup

Before using your handset, follow these steps:

- 1 Remove protective plastic film from display. 
- 2 Insert batteries as shown. 
- 3 Place cover on back of handset and push gently upward until it clicks into place. 
- 4 Place handset in charger with display facing out. 

IMPORTANT: Charge batteries 12 to 14 hours before using the handset for the first time. **WARNING:** Use only NiCd or NiMH "AA" rechargeable batteries. **DO NOT USE ALKALINE, LITHIUM, OR NON-RECHARGEABLE BATTERIES.**

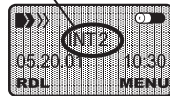
Automatic Registration to Base Unit

- 1 Place handset in **base** with display facing out. Note: DO NOT press the END (On/Off) key before placing handset in base. (If handset is on, turn it off.)
- 2 After approximately one minute, handset will register to the base and the next unassigned intercom number (2 through 4) is automatically assigned. The intercom number appears in the middle of the handset display. The handset reverts to the idle state.
- 3 Place handset in charger or base unit with display facing out and follow charging instructions as above.

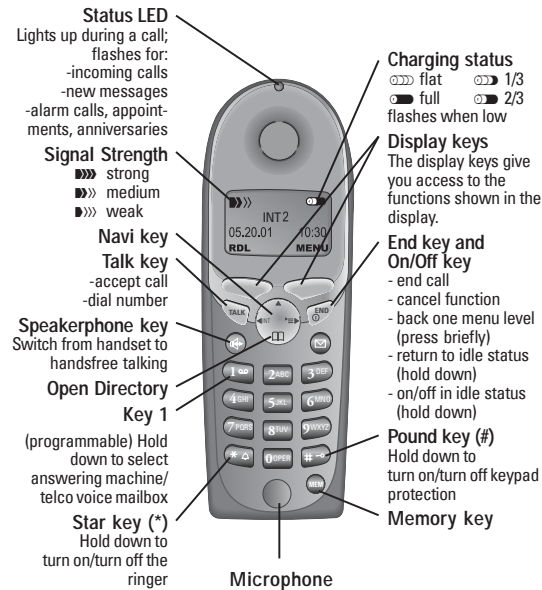


End key and On/Off key

Intercom telephone number of the handset



Your handset is now registered and ready for use.



SIEMENS

2.4 GHz
digital
technology

See User Manual for additional options.

Customer Care: 1-888-777-0211

Or visit our Website: www.icm.siemens.com

Visite nuestro sitio Web para obtener instrucciones en español.

Customer Care: 1-888-777-0211

Or visit our Website: www.icm.siemens.com

Visite nuestro sitio Web para obtener instrucciones en español.

BASIC PHONE OPERATION

- Making a Call**
- 1 Dial desired number.
 - 2 Press or speakerphone key.
 - 3 Press or place handset in base (or charger) to hang up.

See Gigaset 4210 or 4215 User Manual for voice dialing instructions.

- Answering Call**
- 1 Press or speakerphone key.
 - 2 Or, simply remove handset from the base (or charger).

- Intercom Call**
- 1 Lift handset and select the handset's intercom number and press .
 - 2 Or, press the handset number, such as , , , .
 - 3 Or, select "Intercom Call" and press .
 - 4 Or, select , to call all handsets.

- Setting Volume**
- 1 Open the Menu .
 - 2 Scroll to "Sound Settings" and press OK.
 - 3 Select "Handset Volume" and press OK. You will hear the current volume of the speakerphone and its level is displayed. Scroll to the desired volume and press "Save!" You will hear and see in the display the confirmation of the change.
 - 4 To set earpiece volume, scroll down , select desired earpiece volume , and press "Save!"

- Language Setting**
- 1 Open the Menu .
 - 2 Scroll to "H/S Settings" and press OK.
 - 3 Scroll to "Language" and press OK.
 - 4 Select the desired language and press OK. A check mark appears next to the selected language.

Customer Care: 1-888-777-0211

Or visit our Website: www.icm.siemens.com

Visite nuestro sitio Web para obtener instrucciones en español.